

**Auctions**

Reserve Sat., Feb. 5th at 10 a. m. for the Thomas herd dispersal, 3 mi from Dundee, N.Y., 25 mi from Bath, or Corning, N.Y. (Follow arrows off Rte. 14 or 14A) Selling 222 top homeraised, interstate-tested Holsteins: 152 cows—some fresh, some springing, many bred for Fall and really milking!! A young and sharp dairy throughout!! 70 sturdy, nice heifers—40 breeding age, with about 20 bred and balance younger. One of the best herds, overall, to sell this season!! PLEASE NOTE: we will sell heifers at 10 a. m. and mature cows at 12 noon sharp!! Mr and Mrs Lyman Thomas, Owners For further information, contact Rumsey Sales, Bath, N Y (607-776-3478)

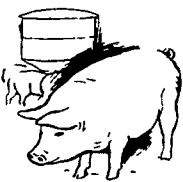
**Wants To Buy**

**FARMING ORGANICALLY?** The Organic Market, 601 West Lemon Street, Lancaster will buy any produce grown without chemical fertilizers or insecticides. Send information and prices or call 397-4641.

**Real Estate**

For Sale - 87 acre dairy farm located in Mercer Co., 1 mi. West of Fredonia, Pa. Good buildings, 3 silos, 37 stanchions, pipe line milker, 500 gal milk tank, Price \$48,000.00. More acreage and barn available. Floyd Wilson (owner) R.D. No. 2, Fredonia, Pa. 16124, Phone 412-475-2670.

**SELL ★ YOUR BUTCHER HOGS DIRECT TO**



**ARMOUR CO.**  
READING, PA.  
We will be glad to look at your hogs & bid you  
**Call AL SHAFFER At**  
(215) 376-2941  
Evenings (215) 779-3847

**Livestock For Sale**

Reg. Yorkshire and Duroc Service Boars. 20 Duroc Open Gilts. Reg Duroc Sow due February. 1st \$175.00, Will Deliver

**LEON L. ARNOLD**  
1245 Cumberland St.  
Lebanon Pa. 17042  
717-273-5880

Purebred Yorkshire boars, bred gilts and open gilts, carcass championship bloodlines. Willow Glen Farm, RD1, Strasburg, Pa PH AC 717-786-2562

For Sale - Two 200 lbs Landrace Boars Chester Reiff, Bird-in-Hand, Box 200, Phone 656-6801

SPF origin Hybrids bred to meet demand of commercial producer. Excellent litter size and growth rate. Final cross is four-way cross which adds vigor and carcass quality. Jet Age Swine Breeders, Inc., Nicholas Kohut, Manager. 717-768-8378.

Hampshire and Yorkshire Service Age Boars and Bred Gilts. Contact John Straybridge, Stewartstown, Pa. 17363, Phone 301-996-2022

**Help Wanted**

Wanted - Top man to work on modern dairy and grain farm. Modern house with conveniences. Vacation, wages and usual allowances. Phone 301-275-5951 or write Box 33, Cecilton, Md

Married man for modern dairy farm, 4 room apartment, privileges, good salary. Phone 626-5594

**For Rent**

Home for Rent Suitable for Amish Couple David Z Esh, Gordonville Pa No 1, 17529

**FARM FOR RENT**

Mifflin County: Dairy farm with 115 acres of tillable limestone soil (518 acres total), loose housing and double 4 milking parlor, 2 silos with unloaders, 50 foot bunk feeder, 4 bedroom house with bath and electric heat. Call 1-717-899-6269.

**EXCELLENT FARM VALUES**

If you are interested in buying a farm call a Kingsway Salesman and make an appointment for a pictorial tour of available farms, and a personal tour of the farms you choose to see

**Mifflin County:** 104 acres, 95 acres tillable, house with conveniences No barn **\$25,000**

**York County:** 85 acres Dairy Farm, 32 comfort stalls plus loose housing and 48 ft Bunk Feeder 2 Harvestore Silos. Nicely remodeled home with 6 rooms and bath 5000 ft of hard road frontage, frontage sold on adjoining farm Excellent investment at **\$135,000.**

**Dauphin County:** 97 acres, 27 dairy stalls, barn cleaner and bulk tank Price reduced, **\$60,000.00.**

**Juniata County:** 339 acres modern dairy barn, beautiful house, over 200 acres of very nice woodland An excellent buy at **\$77,000.**

**Tioga County:** Dairy farm, 276 acres, 200 tillable, 50 cow dairy barn with bulk tank and milk transfer system Modern house with electric heat Farm, stock and equipment **\$100,000.**

**New York Border:** 319 acres, brick home, 2 barns, 70 acres woodland, balance very productive farm land Priced at only **\$55,000.**



149 EAST KING ST. LANCASTER  
PHONE 299-0791

**Home Services**

Home-Fix All Repairs. Free bids. Call 786-7632

**Miscellaneous**

WOOD SHAVINGS. Ideal for work-ways and bedding. \$12 per ton. Can be delivered in bulk loads of 10-12 tons. Less expensive than straw or tanbark. Contact Bob Geist at Leola Supply Co. Inc. Ph. 717-656-6811.

**NOTICE**

**AUCTIONEERS!**

We print sale bills.

Call 394-3047 for price.

**FREE**

Subscribers to Lancaster Farming will receive one advertisement Free each month in our Mail Box Market. Subscribers using the Mail Box Market will be governed by the following rules:

Limit your advertisement to 25 words; All advertisements must be in our hands by Thursday noon or same will be held over for next week's paper; No business advertisements accepted.

**Feed**

For Sale - Hay and Straw. Call 786-3215.

**Notice**

Farm Income Tax Returns prepared in the convenience of your home. Call Charles. Phone 426-3684

**Farm Equipment**

Bolens 7 H.P. Tractor, Mower, Blade & Sweeper. Sauder Loader w-snow bucket Case Model 150 Loader New 130 bu. Manure Spreader \$725.

**WALTER BINKLEY & SON**  
RD4 Lititz  
Phone 626-2344

**PUBLIC AUCTION**

**FARM MACHINERY, HAY, STRAW, OATS, PONIES, HARNESS AND TACK**

The undersigned having sold his farm, will sell the following personal property at Public Auction on the premises located at EAST PROSPECT 9 miles East of YORK, Penna. (via York-East Prospect Road) - 2 miles North of CRALEY, Penn. in York County, Penna.

**SATURDAY, FEBRUARY 5, 1972 at 12:00 Noon (EST)**

**FARM MACHINERY:** IHC 504 Tractor (gas) w-3 pt. hitch; IHC 531 Plow 3x14"; IHC 2 MH mounted 2 row corn picker - fits 504; Farmall H Tractor w-loader; Farmall C Tractor w-2 row mounted Corn Planter and 2 row Cultivators; IHC 47 PTO Baler; IHC 90 Pull type Combine (excellent condition); IHC 10 Grain Drill, 13 disc w-large boxes; N-I 7 ft. Mower, 3 pt.; N-I 12A Manure Spreader; 28 ft. Lapp Elevator; Weed Tiller; J-D 35 tooth Harrow; 2 Rubber tired Wagons w-sides; J-D Hammermill; Brillion 12 ft. Cultipacker; J-D 32 Disc Harrow; M-F 6 Bar S.D. Rake; Century Field Sprayer; Cord Wood Saw; Platform Scales; Corn Shellers; Wheel Barrows; Grindstone; Feed Carts and other items.

Approx. 400 bales of Hay, 500 bales of Straw and 600 Bu. of Oats.

3 Ponies, Surrey; Runabout; 5 Saddles; All kinds of Harness and Tack.

**TERMS - CASH**

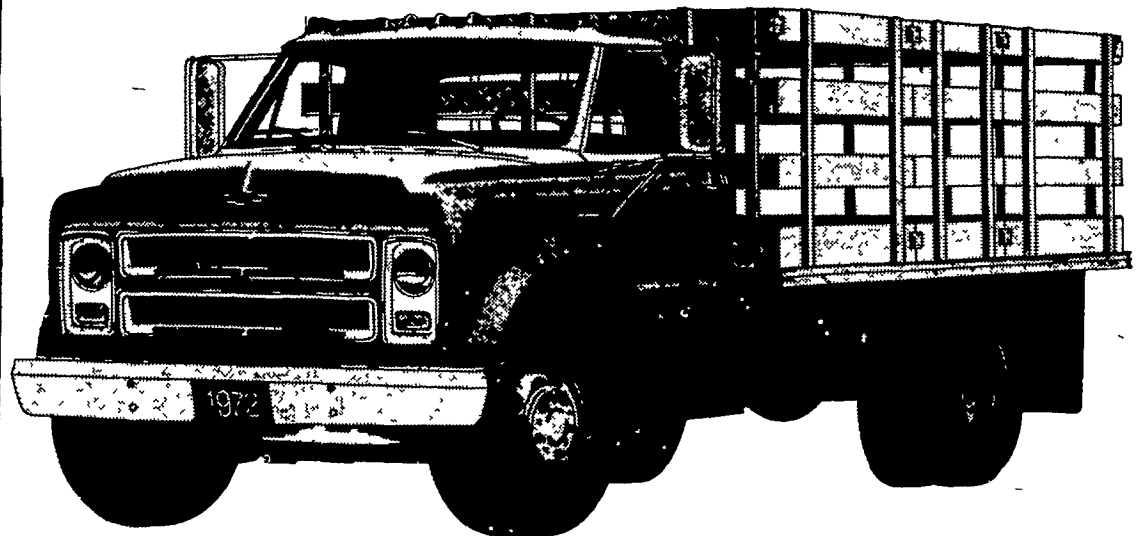
Not responsible for accidents on day of the sale

J. H. O'Neill, Auctioneer  
Forest Hill, Md.

**ELI WAGNER, JR., Owner**  
York, Penna.

Lunch available on the grounds

**Midwinter deal**



**Save plenty on a big Chevy truck.**

When the weather cools the deals get hot on Chevy medium-duty trucks. You can choose from two cab styles—conventional and tilt—with GVW's to 44,500 lbs. and GCW's to 60,000 lbs. And here's an important money saver at no extra cost: a 96" BBC on single-

axle conventionals. Also available: tandems with a wide-range of axle ratios. It's your kind of truck, and you can own it now at your kind of price.

CS51403 w-12' Stake Body, West Coast Mirrors

**\$3989.49**

Destination Charges, Dealer's Prep., Local Taxes Extra.

**Built to last! Priced to go! Right now!**

**Chevy trucks**

**VENTURES CHEVROLET**

AT KISSEL HILL LITITZ, PA. 626-2091