

# Paul Zimmerman, John Lapp Have Top 1971 DHIA Records

Paul B. Zimmerman, Ephrata RD1, was recognized this week for having the best DHIA herd average in 1971.

At the annual noon banquet of the Red Rose Dairy Herd Improvement Association at the Farm and Home Center Tuesday, Zimmerman and other Lancaster County dairymen with herds averaging more than 500 pounds of butterfat per animal were recognized.

Zimmerman's herd, which averaged 327 animals through

the year, had an average production level of 673 pounds of butterfat and 17,057 pounds of milk.

Running a close second was John P. Lapp, South Groffdale Road, Leola RD1, whose 30 cow herd averaged 17,143 pounds of milk and 661 pounds of butterfat.

Zimmerman and Lapp had the only herds listed in the annual report with production of more than 17,000 pounds.

Throughout the Lancaster County DHIA in 1971, the 19,368

cows on record averaged 12,574 pounds of milk and 488 pounds of butterfat. This compared to a statewide average of 12,920 pounds of milk and 498 pounds of butterfat.

The Lancaster County figures were down slightly from last year when the average output per cow was 12,598 pounds of milk and 489 pounds of butterfat.

The number of animals in 1971 in DHIA is up more than 600 from last year while the number of full-year herds is down by six to a total of 411. This resulted in an increase in the average number of cows per herd from 44.9 in 1970 to 47.6 in 1971. The state average in 1971 was 47.9 cows.

Comparative results for the past 30 years show that when the testing started in 1939-40 the average production per cow was only 9,344 pounds of milk and 370 pounds of butterfat. This stayed relatively stable until the mid-1950's.

Production in 1958-59 exceeded 10,000 pounds of milk and 400 pounds of butterfat for the first time. By 1961-62 average output per cow had passed 11,000 pounds of milk and in 1963-64 it exceeded 12,000 pounds for the first time. For the past five years, the figures have remained relatively stable.

Zimmerman had the high Holstein herd average.

Others recognized for high breed records were Ayrshire, Masonic Homes, Elizabethtown, Guernsey, Raymond Witmer, Willow Street RD1, Jersey, Roy Ulrich and Son, Quarryville RD1; Brown Swiss, J. Rohrer Witmer, Willow Street RD2, and Mixed Herd, Harold L. Risser, Bainbridge RD1.

New DHIA directors introduced at the banquet are: Isaac K. Eby, Ephrata RD1; Mervin Nissley, Bainbridge RD1; Nathan Stoltzfus, Gap RD1;

James Eshelman, Mount Joy RD1, and Ellis Denlinger, Gordonville RD1.

Other producers with butterfat averages exceeding 600 pounds in 1971 were:

John S. Yost, Kinzer, 15,363 pounds milk, 656 pounds fat; Harry G. Kreider, Quarryville RD1, 15,978 milk, 644 fat; Donald S. Eby, Gordonville RD1, 15,550 milk, 631 fat; John and H. Farrington, Lititz RD2, 16,393 milk, 625 fat.

Amos E. King Jr, Ronks RD1, 16,623 pounds milk, 624 pounds fat; Curtis E. Akers, Quarryville RD1, 16,095 milk, 619 fat; Dale E. Hiestand, Bainbridge RD1, 15,828 milk, 616 fat; Amos and Eleanor Hershey, Kinzers RD1, 14,233 milk, 616 fat; Leon S. Lapp, Gap RD1, 16,419 milk, 613 fat; Mervin Nissley, Bainbridge RD1, 15,787

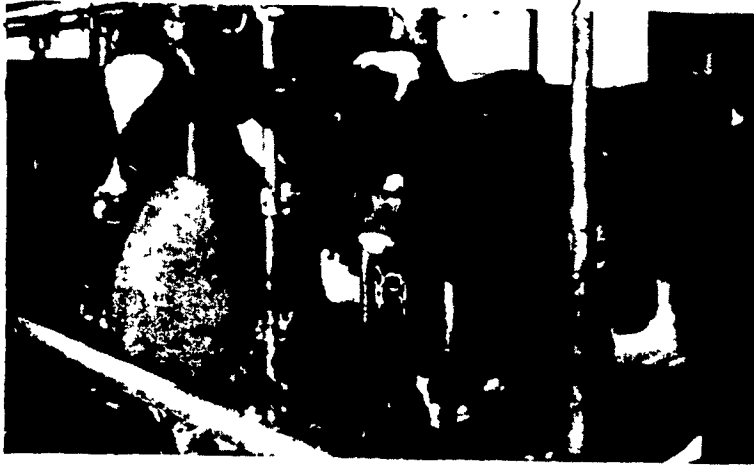
milk, 612 fat; Henry E. Kettering, Lititz RD3, 15,631 milk, 611 fat.

J. Kenneth Hershey, Kinzers RD1, 16,120 pounds milk, 606 pounds fat; J.Z. Nolt, Leola RD1, 16,371 milk, 604 fat; Harry S. Aungst, Marietta RD1, 15,434 milk, 603 fat; Red Rose Research Center, Lancaster, 15,713 milk, 602 fat; Edwin K. Wise, Ephrata RD1, 15,657 milk, 601 fat; Raymond and Louise Witmer, Willow Street RD1, 12,129 milk, 601 fat; Lloyd Wolf, Quarryville RD2, 14,959 milk, 600 fat.

Producers with butterfat averages exceeding 575 pounds were:

Albert E. Fry, Manheim RD2, 15,691 pounds milk, 598 pounds fat; Robert and Joan B. Book, Leola, 15,012 milk, 596 fat; David L. Landis, Lancaster, 15,752 milk, 594 fat; Rufus G. Martin, (Continued on Page 11)

## QUALITY COUNTS!



**RED ROSE DAIRY FEEDS** are high quality feeds formulated from high quality ingredients to provide top nutrition for your dairy cows.

What does this mean to you? Well, better quality feeds mean better results. And better results mean better profit!

Take Red Rose 14 Test Cow Feed, for instance. It's coarse-textured. The finer materials in it are pelleted. Red Rose 14 Test Cow is high in fat, minerals and digestible nutrients. It's one of the best dairy feeds Red Rose formulates. More and more dairymen prefer it and count on it because it can be fed at all seasons.

Feed 14 Test Cow to your milking cows, dry cows, calves and bulls. It's good feeding. If you're aiming for maximum feeding efficiency, use Red Rose Rumenator Pellets for top feeding to provide extra vitamins and energy. You'll see the difference in the milk pail where it counts most!



Here's where you can buy all of your Red Rose Dairy Feeds.

- |  |  |
|--|--|
| <b>Walter Binkley &amp; Son</b><br>Lititz                        | <b>G. R. Mitchell, Inc.</b><br>Refton, Pa.       |
| <b>Brown &amp; Rea, Inc.</b><br>Atglen                           | <b>Mountville Feed Service</b><br>Mountville     |
| <b>Elverson Supply Co.</b><br>Elverson                           | <b>Musser Farms, Inc.</b><br>Columbia            |
| <b>L. T. Geib Estate</b><br>Manheim                              | <b>Martin's Feed Mill</b><br>Ephrata, Pa.        |
| <b>I. B. Graybill &amp; Son</b><br>Strasburg                     | <b>Chas. E. Sauder &amp; Sons</b><br>Terre Hill  |
| <b>E. Musser Heisey &amp; Son</b><br>R. D. #2, Mt. Joy, Pa.      | <b>Shelly Brothers</b><br>R. D. 2, Manheim, Pa.  |
| <b>Heistand Bros.</b><br>Elizabethtown                           | <b>E. P. Spotts, Inc.</b><br>Honey Brook         |
| <b>Red Rose Farm Service, Inc.</b><br>N. Church St., Quarryville | <b>H. M. Stauffer &amp; Sons, Inc.</b><br>Witmer |
| <b>David B. Hurst</b><br>Bowmansville                            |  |

## JANUARY SPECIAL BALER TWINE

Specially treated to make the twine resistant to rot, mildew, rodents and insects.

**\$5.65 PER BALE**

LIMITED QUANTITY

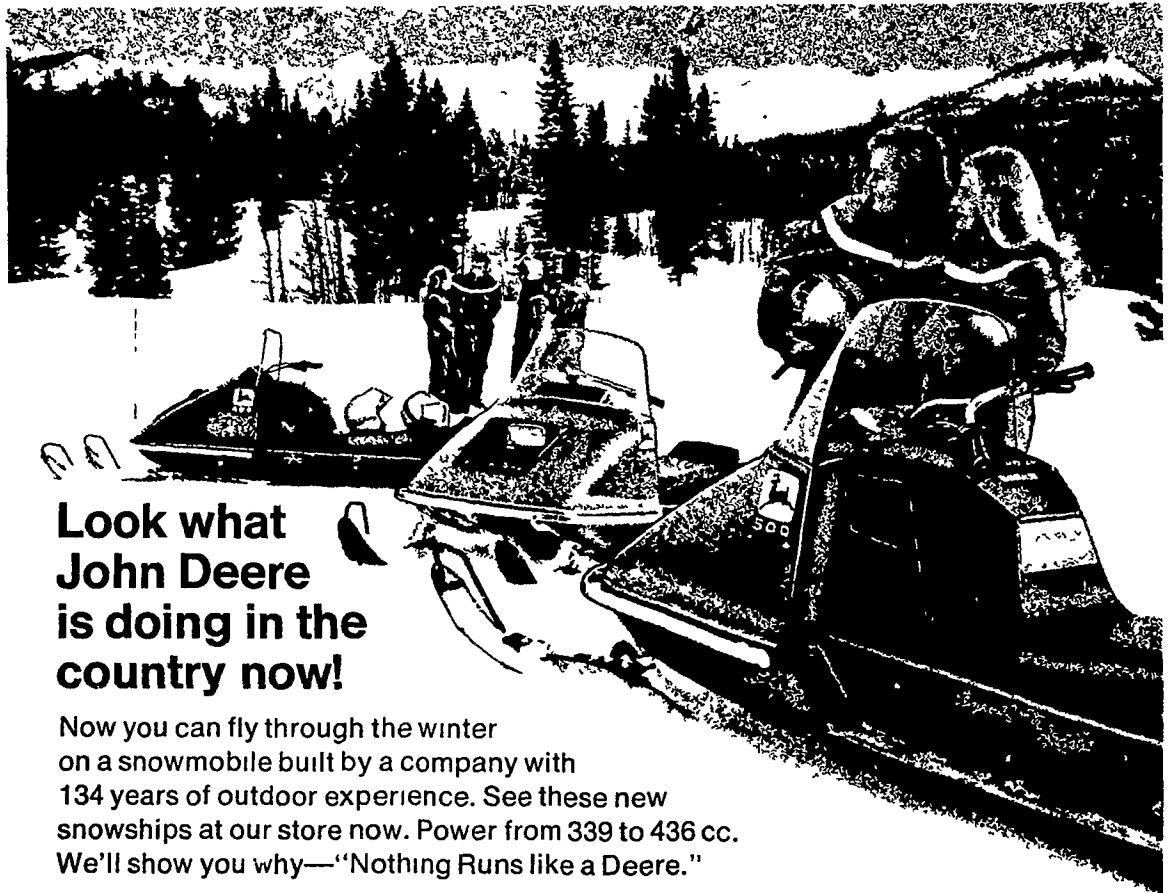
FOR MORE DETAILS  
CALL 717-626-8909

**EASTERN STATE DISTRIBUTING CO.**

R.D. NO. 2  
LITITZ, PENNA.

## FREE SNOWMOBILE SUIT

With Each  
New John Deere Snowmobile Purchased Now.



Look what John Deere is doing in the country now!

Now you can fly through the winter on a snowmobile built by a company with 134 years of outdoor experience. See these new snowships at our store now. Power from 339 to 436 cc. We'll show you why—"Nothing Runs like a Deere."

Special — New Terms — Finance John Deere Credit Plan  
Interest Waived to November 1, 1972.



**M. S. Yearsley & Sons**  
West Chester 696-2990

**Landis Bros. Inc.**  
Lancaster 393-3906

**Shotzberger's**  
Elm 665-2141

**A. B. C. Groff, Inc.**  
New Holland 354-4191

**Wenger Implement, Inc.**  
The Buck 284-4141