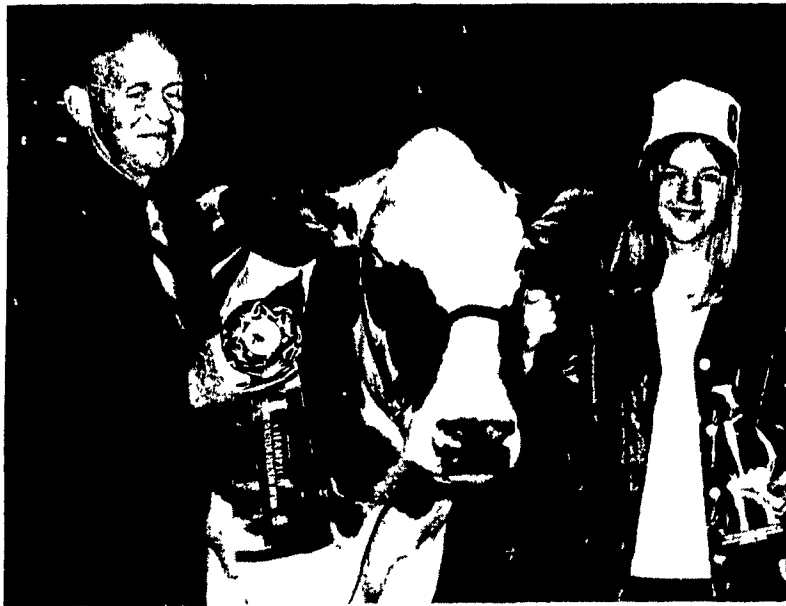


Kauffman Holsteins Win

Linda Kauffman, Elizabethtown RD1, had the grand champion junior Holstein in Holstein competition at the 56th State Farm Show this week. Linda's father, Robert, had the reserve grand champion female in open class competition.

Kauffman's Holsteins won second place awards in a class for the best three females, and the dairy herd class Linda placed second with a 4-H cow in the class for two-year olds. An FFA entry, a heifer calf shown by Paul Horning, Stevens

RD1, won first place in its junior division class and placed second in the open show. The count-group-of-five cows took another first place, with cows owned by Linda Kauffman, Sue Kauffman, Donna Hess,



Linda Kauffman, Elizabethtown RD1, shows her grand champion Holstein at the junior show in Harrisburg this week. Presenting the championship ribbon is show judge Richard Brooks of Paclamar Farms, Lewisville, Colo.



Robert Kauffman shows his reserve grand champion female cow in open class Holstein competition at the Farm Show Tuesday. Other females in the picture are:

Miss Joanne Thompson, left, 1972 Pennsylvania Distinguished Holstein Girl, and Miss Arlene Leib, 1972 Pennsylvania Dairy Princess, Cambria County.

Pork Consumer News

The consumer pays higher prices for "glamorous" cuts of pork, a Farm Show exhibit says. The exhibit suggests that consumers purchase unglamorous cuts such as loin blade and butt and shank ends rather than center cuts of loin and ham.

"Consumer demand is greater for the glamour cuts which represent only 20 per cent of the carcass," the exhibit says. The exhibit also has these meaty statements: packers pay producers 20 cents a pound for 200-pound hogs:

When You Buy Meat
As you shop for meat, take time to compare cost per serving, suggest Extension consumer specialists at The Pennsylvania State University. Estimate the number of servings a meat package contains. Then divide the total price by the number of servings.

Gov. Shapp

(Continued from Page 1)

cone at the dairy booth and a baked potato at the potato booth

A number of youngsters from the Farm Show's neighborhood accompanied the Governor on the tour and shared in the VIP treatment with the chief executive

The only spot where the Governor missed the test of the real farmer was in the dairy cattle barn. His attempt to milk a cow owned by the Buttonwood Farm of Birchrunville produced only a few drops of milk.

One of his problems came in the milk department when Miss Arlene Lieb, Spangler RD1, Pennsylvania Dairy Princess runner-up, handed him a gallon-sized goblet of cold milk. Commenting that the goblet looked big enough to take a bath in, after Secretary Jim McHale called out, "Bottoms up, Milt!" the Governor took a sip but came up



The five Lancaster County 4-H Holsteins which was first county group in the junior show Tuesday are shown by the following: left to right, Donna Hess; Linda

Kauffman, who showed the junior show grand champion; Carl Weidler, holding Linda's cow; Sue Kauffman, and Raelene Harbold, holding Randy Hess's animal.

with his nose and lips covered with milk

Governor Shapp was delayed in arriving at the preview because he had stopped to give aid at an automobile accident on the Turnpike in Chester County



Jim McHale, Pennsylvania Secretary of Agriculture, greets a crowd gathered on the floor of the Farm Show Building Sunday for special ceremonies and a governor's meeting with the press to launch the 1972 Farm Show.

YOU'RE WHISTLING IN THE DARK...

if you think that heart disease and stroke hit only the other fellow's family.

GIVE... so more will live
HEART FUND