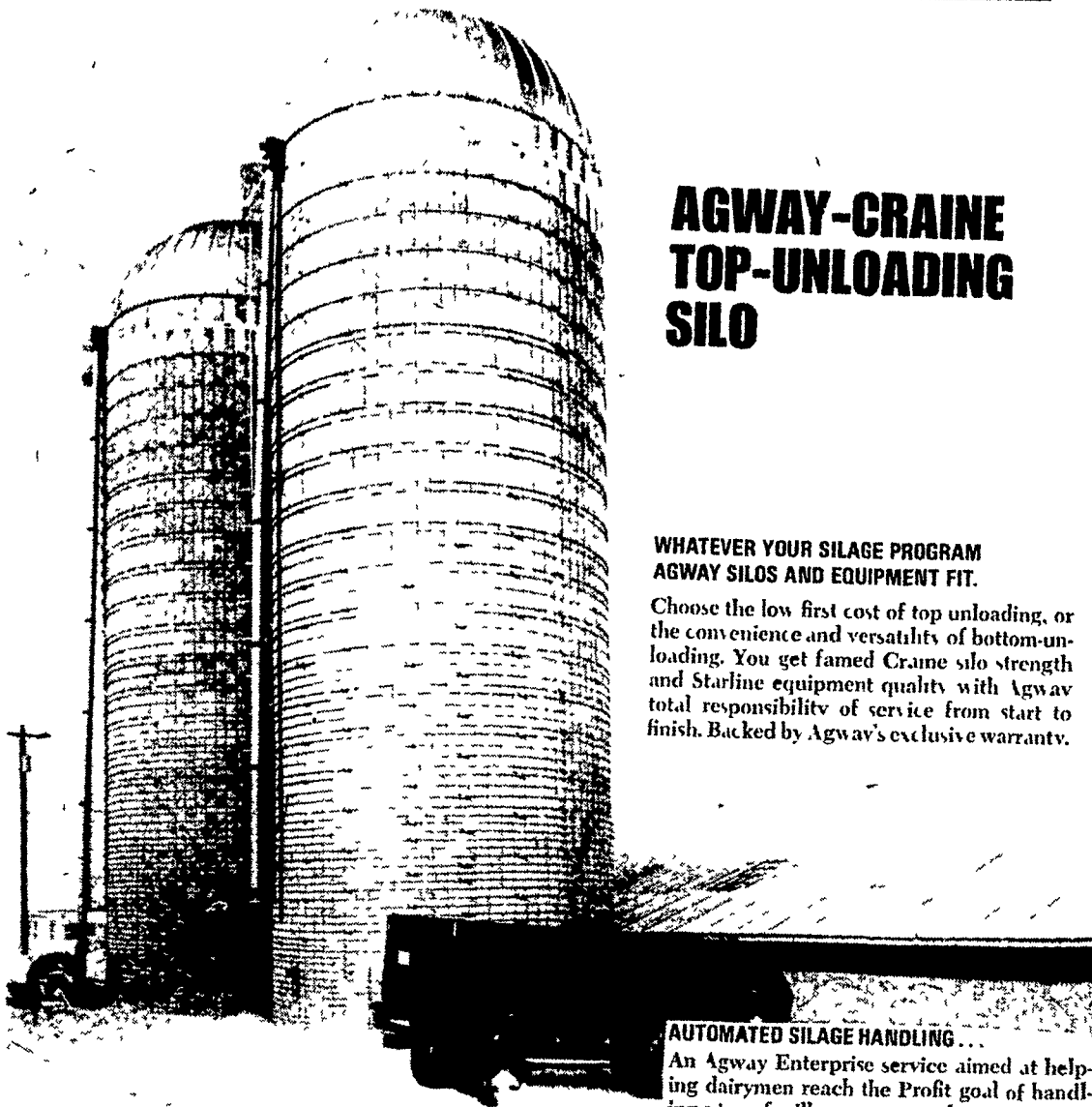


AGWAY



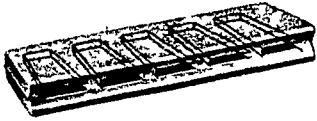
AGWAY-CRAINE TOP-UNLOADING SILO

WHATEVER YOUR SILAGE PROGRAM AGWAY SILOS AND EQUIPMENT FIT.

Choose the low first cost of top unloading, or the convenience and versatility of bottom-unloading. You get famed Craine silo strength and Starline equipment quality with Agway total responsibility of service from start to finish. Backed by Agway's exclusive warranty.

AUTOMATED SILAGE HANDLING...
An Agway Enterprise service aimed at helping dairymen reach the Profit goal of handling a ton of milk per man per day.

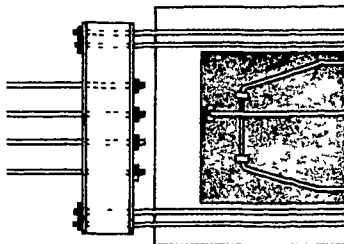
BUILT-IN STRENGTH/OUTSTANDING FEATURES



CRAINE STAVES... STRONGEST IN THE BUSINESS—Craine staves are 3 3/8" thick, nearly twice as thick and 2 1/2 times stronger than ordinary staves. Five air cells—cone-shaped for drainage—form a truss for still more strength. The air space, along with light color, provides insulation value and reduces thermal conductivity below that of steel. Craine staves are tongue and grooved to interlock securely on all four sides, forming a smoother wall, inside and out.

DOUBLE-STRONG SPREADERS SPAN CHUTE DOORS—Craine spreader assemblies are engineered to develop twice the design strength of the hoops.

- Single and double hoops are tied to 5" channel steel spreaders with single 9/16" draw bars above and below the door.
- Triple hoops connect to 6" channel steel spreaders with 1 1/16" draw bars spanning the door frame.
- Quadruple hoops connect to 6" channel spreaders that have a steel plate welded across the face creating a box-member for additional strength to meet the required tension of the four 9/16" draw bars, two above and two below door opening. In this way, the double strength objective is assured from top to bottom. 'Sling' type spreaders used on many silos actually reduce the potential strength of their connecting hoops by as much as 50 per cent.



BIG, EASY-TO-HANDLE DOORS—Craine doors are 20" by 23" for easy access. Two layers of redwood form each door. Beveled on all four sides for tight seal. Swing on husky hinges and stay there—no hoisting or danger of dropping one (the hinge forms an easy-to-use ladder). Door frames are reinforced with a 3/8" high-tensile continuous-weld steel rod.

AGWAY SPECIAL EARLY DISCOUNT ON CRAINE SILOS

Now thru March 1972

I AM INTERESTED IN A QUOTE ON CRAINE SILO AND EQUIPMENT

Name

Address Post Office

County State Zip

Phone

SPECIAL EARLY ORDER DISCOUNT ON Starline Silo & Feeding Equipment

Ask for Harold Kinsey



SEE US AT THE AGWAY-CRAINE EXHIBIT AT THE FARM SHOW

BEE-LINE SUPPLY CENTER

1027 Dillerville Rd., Lancaster
Call 397-4761

24 HOUR EMERGENCY SERVICE
WE SERVICE WHAT WE SELL



Russell Kline, right, Reinholds RD1, chats last week with Frank Possessky of Penn Jersey Harvestore. Kline had just been named winner of the gilt which was the grand champion at the Ephrata Fair this year. At a special dinner meeting for swine producers at the Plain and Fancy Restaurant, Bird-in-Hand, Harvestore officially awarded the champion hog to Kline, based on Kline's winning entry in a competition entitled "Hogs Are Beautiful." Kline's entry, shown here, gave a detailed, illustrated description of all phases of swine management in general and his own future plans for a large hog operation in particular. Harvestore officials expressed their delight with the large number of entries received and the quality of the entries.

Schools to Have Vo-Ag Exhibits at Farm Show

Nine Pennsylvania high schools have been selected to present Vocational Agriculture Window Exhibits at the Pennsylvania Farm Show January 10-14

Twin Valley High School, Elverson, with Ron Frederick as vocational agriculture teacher, has been selected as an alternate high school

The nine winning schools, their location the vocational agriculture teacher are as follows:

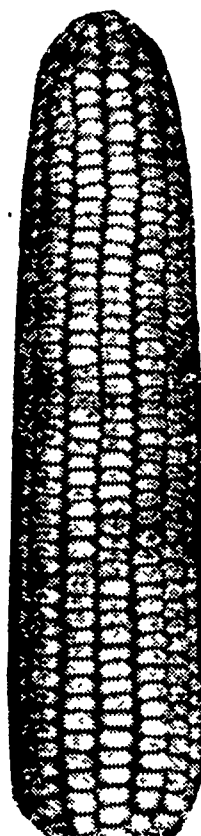
Trinity Area High School, Washington, J N Crosbie,

Western Montgomery County Area Vo-Tech School, Limerick, Roger Michelone, Somerset Area High School, Somerset, Q A Hine, Blue Mountain High School, Schuylkill Haven, P L Lobaugh, Tri-Valley High school, Valley View Star Route, LeRoy Smeltz

Also, Mifflinburg Area High School, Mifflinburg, Donald Mincemoyer, West Middlesex High School, West Middlesex, Sam I Hames, Middleburg High School, Middleburg, David S Bailey, and Columbia-Montour Area Vo-Tech School, Bloomsburg, J G McAllister



Modern Hybrids for Modern Farming



WE ARE IN BOOTH 532

Stop and see us for Merit Sweet Corn and other top vegetable varieties.

Mechanicsburg, Pa.
17055

PHONE 717-766-7608