

Poultry Market Reports

New York Eggs

Tuesday, Dec. 14

Prices trended higher Receipts moderate although country point offerings are heavier Buying interest in bulk eggs slow and unaggressive with inventories at both distributors and jobbing levels beginning to accumulate under the dull movement Large and heavier weights excessive with extra large burdensome and occasionally selling as low as 36 cents in effort to reduce stocks Mediums beginning to show up in more quarters but volume light at present Sharply heavier offerings of this size anticipated next week when schools close and institutional demand eases up Smalls light but adequate Carton orders are fair to occasionally good as many chain stores have placed their holiday orders.

Delmarva

Wednesday Dec. 15

Ready-to-cook movement light and slaughter sharply reduced in line with anticipated needs Less than trucklot prices generally unchanged though reported very competitive in an effort to stimulate movement Live supplies fully adequate to ample though weights continue lighter than a week ago Undertone unsettled Pool trucklot prices for Thursday arrival in the New York area U S Grade A 24-26½ M 24-24½, Plant Grade 23-24½ M 23-23½

Special packs including 1½-2, 3½ pound sizes TFEWR

Eastern Pa. and N.J.

Wednesday, Dec. 15

Prices of light type hens generally held unchanged, though occasional unconfirmed reports indicated slightly higher prices paid in instances Demand fair to good as plants attempt to fill running time Demand for finished product no better than fair Current farm offerings light, however farm offerings for January pickup heavy in some quarters Offerings of heavy type hens short of a fair call Prices

Weekly New York Egg Market

(From Monday December 13 to Friday, December 17)

	Mon.	Tues.	Wed.	Thurs.	Fri.
WHITE					
Fcy Ex Large	40	40½	40½	40½	40½
Large	40	40½	40½	40½	40½
Mediums	38	39	39	39	39
Pullets	34	35	35	35	35
Peewees	22½	23	23	23	23
BROWN					
Fcy Ex Large	45	45	45	45	45
Mediums	Unquoted				
Pullets	Unquoted				
Peewees	Unquoted				
Standards	36	36½	36½	36½	36½
Checks	19	19	19	19	19

Long Tone - Open market buying of eggs at wholesale very slow and showing some pickup but generally below-expectations in most sections

'Limber Legs' in Jerseys Is Inherited

"Limber legs" in Jersey calves, a condition in which calves are unable to control their legs, is inherited, according to the USDA

The first reports of limber legs were made in 1969. Since then, the condition has been reported in several Jersey herds across the country Both female and male calves are affected

Affected calves appear normal, but they are unable to stand and their legs can be easily rotated or bent with no visible discomfort to the calf Normal muscling of the legs is apparently lacking, and the joints are loose

These calves are a complete loss to the dairyman

ARS dairy scientist Robert C. Lamb with Clive W. Arave and veterinary pathologist James L. Shupe of the Utah Agricultural Experiment Station, Logan, determined through a pedigree analysis of affected calves that the defect was genetically controlled All affected animals were closely related

Though the scientists do not

paid at farm Light type hens 4½-7 mostly 6½-7 in Pennsylvania mostly 6-6½ in New Jersey Heavy type 16-17

know exactly how the condition is inherited, they believe it is controlled by a simple recessive gene This means that half the sons and daughters of carrier bulls will be carriers

Further research is under way with known and suspected carriers to provide Jersey breeders more information on how to avoid this problem.

In the Kitchen

APPLE-GRAPEFRUIT PIE

3 cups sliced sour apples
2¼ cups grapefruit juice
1 baked pastry shell
Grapefruit segments
3 tbsps. cornstarch
½ cup sugar

Cook apples in grapefruit juice until tender and transparent. Arrange drained apples and a few grapefruit segments carefully in baked pastry shell Mix sugar and cornstarch together, add to juice and cook until clear and thickened Pour over apples and segments. Serve garnished with whipped cream if desired.

Nonmetro Pa. Areas Gain Most Jobs

As was true in the sixties nationally—with the exception of the Western U.S.—manufacturing employment grew faster in nonmetropolitan areas than in metropolitan areas in Pennsylvania.

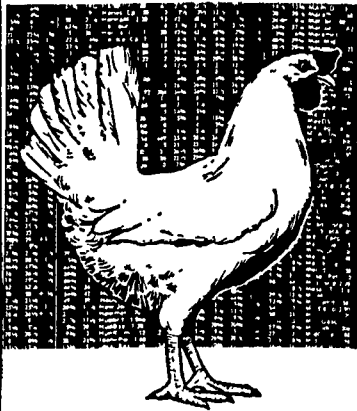
Manufacturing employment expanded 13.7 per cent in small communities with populations under 25,000 during 1960-66. This was a much faster growth rate than the 3.6 per cent of urban areas with centers of 25,000 and over

The small communities acquired 40 per cent of the 77,913 new jobs in manufacturing between 1960-66, according to the USDA

Small centers in the western-metropolitan region of the State gained the most—17.3 per cent, or 11,546 jobs They were followed

closely by centers in the central-nonmetropolitan region, with 17.2 per cent. Centers in the eastern-metropolitan region had a growth rate of 7.4 per cent.

The chief growth industries in small centers were metal and machinery industries—6,800 new jobs were in primary metals and 11,000 in machinery.



sustain top production with the **BABCOCK B-300**

Keeping production up...costs down...is the profit key in poultry operations. And more and more records on commercial flocks of Babcock B-300's... "The Businessman's Bird"... show sustained production of top quality eggs...often with an additional 20 to 30 eggs per bird housed over other strains. Come in... look at the records and the B-300... "The Businessman's Bird".

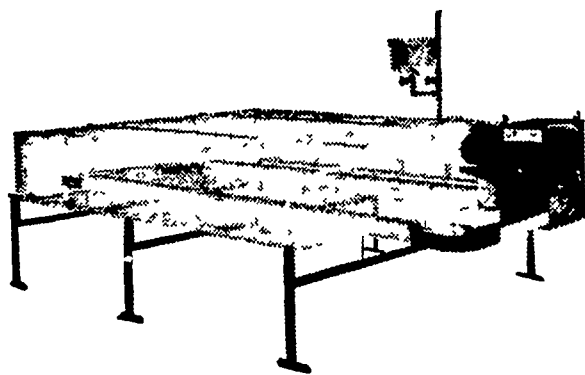


BABCOCK FARMS, INC.

Telephone (717) 626-8561

Big Dutchman. "CHIK-EZE"

THE ALL NEW FLAT DECK CHIK-EZE PULLET REARING CAGE



... offers durability, economy, performance and practical labor saving features that increase management efficiency. The heart of the system is the Big Dutchman chain and trough feeder providing 96 inches of feeding space per cage There is full availability of all the feed to all the birds. All feed is automatically recirculated and remixed, resulting in better feed consumption.

Extra feed capacity makes high density of birds per cage row practical and manageable

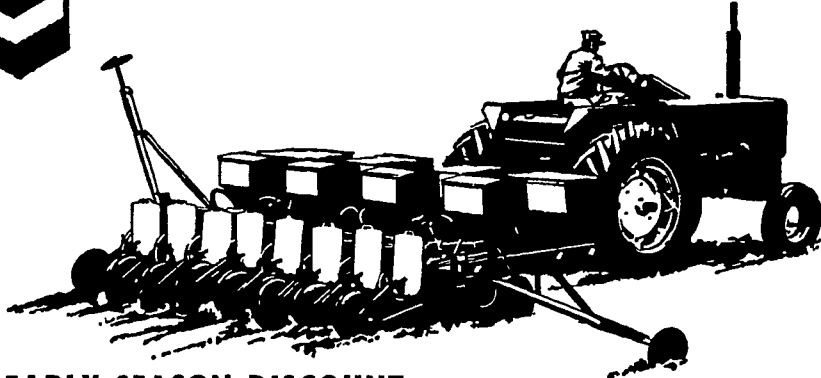
BIG DUTCHMAN
A Division of U.S. Industries, Inc.
EASTERN BRANCH



215 Diller Ave., New Holland, Pa. 17557

Ph. 354-5168

Announcing:
a dry
"pop-up"
Can cut
planting time
in half!



ASK ABOUT EARLY SEASON DISCOUNT.

P. L. ROHRER & BRO., INC.

SMOKETOWN, PA.

Phone Lanc. 397-3539

TM's Ortho, Chevron Design Unipel Reg. U.S. Pat. Off.

Ortho Unipel STARTER SPECIAL.

A starter? As a "pop-up"? It has to be special. It is STARTER SPECIAL is a completely unique product. Here's why

— Physical Uniformity. STARTER SPECIAL pellets are made to the same shape and density for maximum consistency and control in application

— Chemical Uniformity. Each and every STARTER SPECIAL pellet has all three primary nutrients — nitrogen, phosphorus, potassium — chemically homogenized in precisely the most desirable ratio 13-34-10. The nutrients can't separate or segregate during handling as with troublesome, hard-to-regulate "dry blends"

— Double Duty Nutrients. STARTER SPECIAL has both quick acting and long-lasting nitrogen and phosphorus for thorough plant feeding. There is no urea or diammonium phosphate that might endanger the seed through liberation of free ammonia

Of course, these features also make it highly effective as a banded starter. But, with only slight adaptation of most planters, it can be applied directly with the seed in exacting measurement for safety and maximum response.

With this kind of control, you apply much less material — only 1/3 the amount needed for banding. And the reduced material handling could cut your planting time in half!

So, save time, trouble, and money at planting time. See us soon about applying STARTER SPECIAL this spring as a dry "pop-up".