

Public Sale Register

WED DEC. 22- Maryland Herd Dispersal at the New Holland Sales Stables, New Holland, Pa. Glenn Fite, Owner

SAT JAN 1, 1972- 1.30 Feeder Pig Sale located 2 1/2 miles South of Bethel from US 22 and 6 miles North of Myerstown, Pa. along US 501 Sale by Norman M Martin, R. D. 1, Myerstown, Pa.

WED. JAN. 5- Public Sale Complete Dairy Herd Dispersal & Milking Equipment located approx 1 1/2 miles east of Rt 74 turning on the road to New Bridgeville Watch for arrows leading to sale, in York Co., Pa Sale by Carl W Shaul, owner Robert L Sechrist, auctioneer.

SAT. MARCH 4- 12 Noon Public

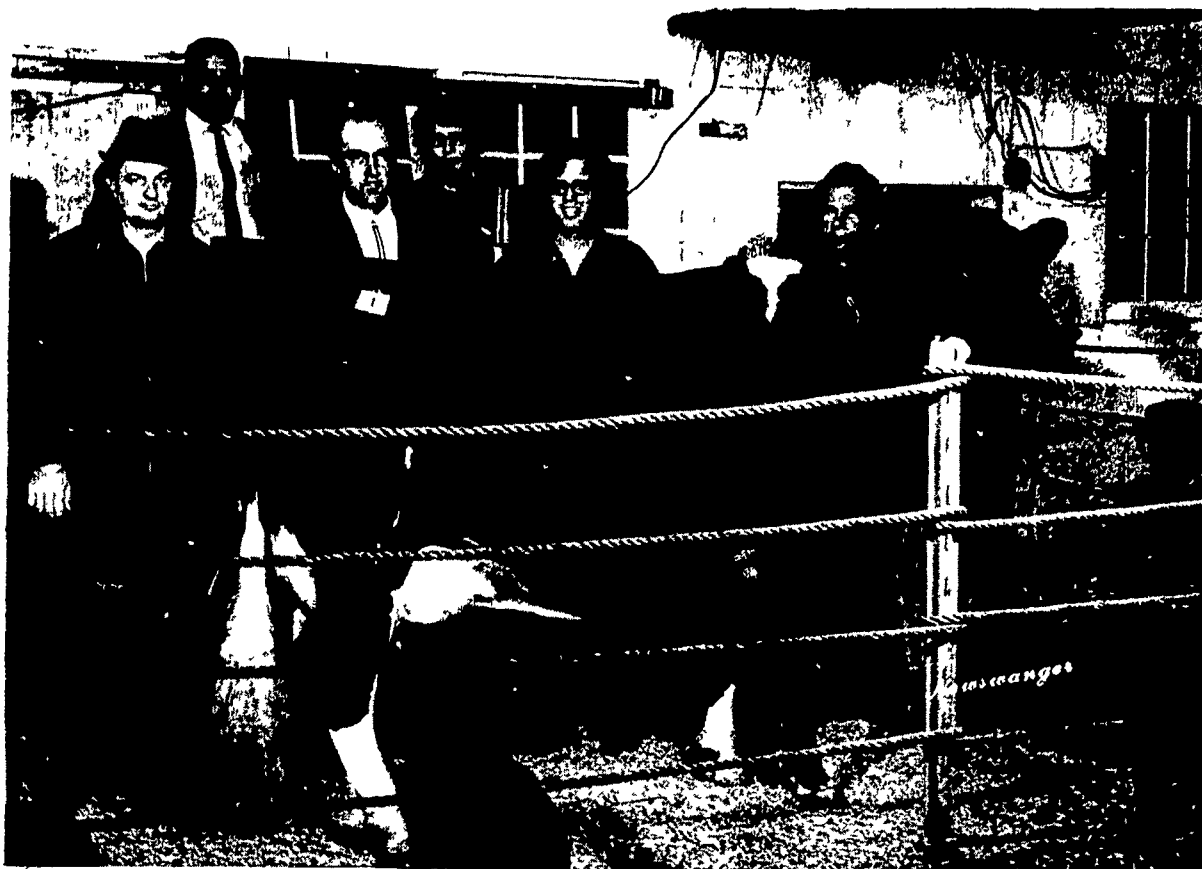
Ephrata Young Farmers Hold Christmas Party

The Ephrata Area Young Farmers Association held its annual family Christmas party at 7:30 p.m Tuesday, December 14 in the auditorium and cafeteria of the Ephrata Junior High School

Mahlon Eberly was chairman, assisted by Marvin Sauder and Earl Smoker

The program included musical selections and group singing led by Isaac Eby, Christmas readings, a skit by Nancy Zimmerman, a ventriloquist act by Mrs Peggy Kline and presentation of special gifts

Sale of Farm Equipment located 3 miles North of Lebanon on Route 72. Sale by Aaron Martin, Jr , Rt. 3 Lebanon Paul Snyder, Auctioneer.



This is Lyn-Nan Kingpin Leonora, with a 340-day record of 24,919 pounds of milk and 877 pounds of butterfat. The cow sold recently at the sale of Carl Diller on Route 222 south of Lancaster.

Buyer was Glenn Fite, Quarryville, for \$2,625. Fite is shown on the left. Others from left to right are: J. Everett Kreider, auctioneer; Carl Diller, owner of the cow; Mrs. Diller, sales clerk; Carl G. Troop, last

contending bidder, and Ira Welk, sale leadsman.

Diller purchased the animal in Susquehanna County. As a three-year-old, the Kingpin daughter had a top daily production of 101 pounds. Her dam averaged over 20,000 pounds for eight lactations.

Sale average was \$670, including some Canadian cattle.

MARYLAND HERD DISPERSAL

WEDNESDAY, DECEMBER 22, 1971

at the New Holland Sales Stables
NEW HOLLAND, PA.

**42
HEAD
42**



This herd consists of 40 mature cows, 2 Red stock bulls, 32 Holsteins and 10 Red and White and Guernsey Cows.

13 cows recently fresh and many to freshen in the next 3 months. All cows born and raised on farm where I bought them. Being sold due to health problems.

If you want milk and butterfat test, plan to attend this dispersal.

GLENN FITE, Owner
717-786-2750

Inter-State Delegates Support PMMB

"Delegates representing more than 10 per cent of all dairy farmers in Pennsylvania stood up to be counted in an unanimous vote stressing full support for the Pennsylvania Milk Marketing Board (PMMB) as it now exists by law", asserted Wilbur Seipt, president of Inter-State Milk Producers' Cooperative, Philadelphia.

The delegates of this Milk Marketing Cooperative met recently in Philadelphia to make

a statement in their hard sought goals, Seipt said.

During the discussion of PMMB, President Seipt, who is a dairy farmer in Montgomery County, Lansdale, stated that "milk is highly perishable and we cannot haggle over prices while the product spoils and consumers suffer. The farmer's income must be high enough to meet necessary health standards required in the producing and processing of milk Such costs

are considered when the farm price for milk Such costs are considered when the farm price for milk is set "

Dairy farmer Seipt said about the Milk price system in Pennsylvania "Consumers have reaped in benefits of efficiency and a continuous supply of milk Milk prices are fair to all segments of the public "

The PMMB was established in the 30's to help dairy farmers The conditions leading to the enactment of this law were

- 1 Low return to producers
- 2 Decreased effectiveness of collective bargaining
- 3 Destructive competition
- 4 Danger to public health and welfare

"Conditions have not changed—the need is more urgent than ever", charged the Dairy Cooperative president

McCarty Is Promoted

Willis H McCarty, 819 Grandview Drive, Ephrata, has been named to the position of Production Scheduling Supervisor at Victor F Weaver, Inc , New Holland

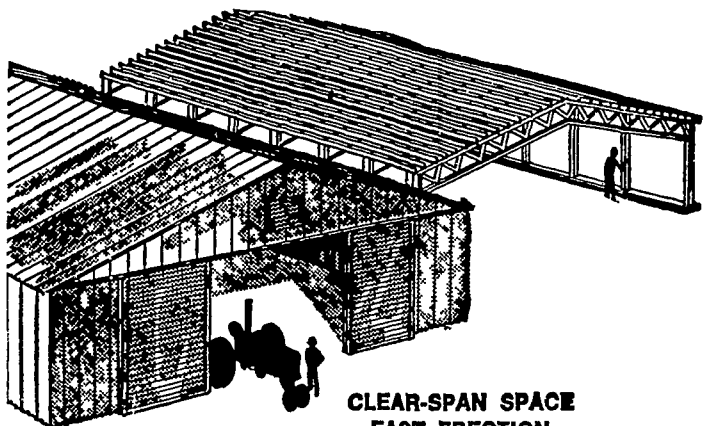
McCarty joined Weaver's Live Poultry Department in 1944 and, until his recent appointment, held the position of Live Poultry Buyer

In his new responsibilities, McCarty will be responsible for the procurement schedules of raw materials (live and imported poultry) and the establishment of weekly production schedules

Fix-It Tip

An electric light that is controlled from more than one point, as on a stairway, will have a special switch known as a three-way switch. If you replace one of these, make sure you get the right kind of switch. There will be three terminals instead of the usual two. Simply rewire as the old switch was connected.

New Behlen "Tubeline" building ...
all the advantages of steel at a
POLE BARN PRICE



**CLEAR-SPAN SPACE
FAST ERECTION
WON'T SAG OR TWIST**

All the brute strength of curved steel is utilized throughout the exclusive framing system of Behlen's new "Tubeline" building. It's designed for strength, and for easy construction. Simple bolt-together connections speed erection. Clear-span design eliminates center-pole installation.

Available in widths from 20 ft. to 60 ft., in your choice of galvanized or color finishes. Many floor plans. Doors and windows can be placed nearly anywhere. Any or all sides can be left open. Erect it yourself ... or we'll build it for you.



FREY BROS.

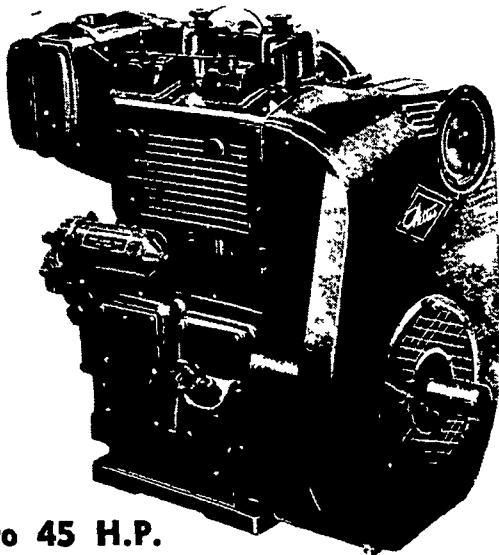
Fred Frey, Mgr.

R. D. #2, Quarryville, Penna. 17566 Ph. 717-786-2235



**10%
OFF**

on all purchases or
agreements made from now
to December 31, 1971.



**1 1/2 to 45 H.P.
Continuous Rating**

★ With Petters Exclusive Warranty

Your Satisfaction is Guaranteed.

★ "Petter Power Pay" world leaders

in diesel engine design.

Let us know of your service problems.

WE ARE SMALL ENOUGH TO KNOW YOU AND
LARGE ENOUGH TO SERVE YOU.

GEHMAN BROS.

1 Mile North of Terre Hill on Route 897

East Earl, R.D. 1, Pa.

Phone 215 445-6272