

Poultry Market Reports

Fogelsville

Auction Report
Sale of Tuesday, Nov. 9

(Prices paid dock weights, cents per pound, except where noted) Hens, Heavy type 5-17, mostly 7-12; Pullets 23½-32, mostly 23½-28; Roasters 6-32, mostly 24-29; Ducks 11-34, mostly 20-34, Drakes 23½-46, mostly 39.46, Geese 20-37, mostly 33-35; Turkeys, hens 32½-39; Rabbits 21.70, mostly 38-46; Guinea 55-57; Pigeons (Per pair) 30-3.20. Total coops sold 849.

Delmarva

Wednesday, November 10

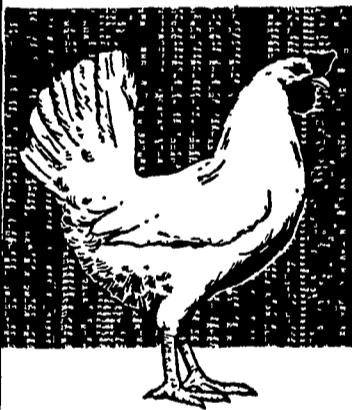
Ready-to-cook movement continues spotty as most buying on a hand to mouth basis. Slaughter schedules occasionally reduced in line with needs. Less than trucklot prices held unchanged on both Plant and U.S. Grade A, though offerings continue very competitive instances. Live supplies adequate with overall weights generally slightly heavier than desired. Undertone steady. Pool trucklot prices for Thursday arrival in the New York area: U.S. Grade A 25½-28½ M 26; Plant Grade 24½-27 M 25. Special packs including 1¾-2, 3½ pound TFEWR.

First World Conqueror

Alexander the Great was the first world conqueror in history. He led his armies almost to the end of what was then the civilized world.

Annual Guernsey Meeting Set

The Lancaster County Guernsey Breeders Association annual meeting will be held at 7 p.m. Friday, November 19 at the Harvest Drive Restaurant, Gordonville RD1.



sustain top production with the **BABCOCK B-300**

Keeping production up...costs down...Is the profit key in poultry operations. And more and more records on commercial flocks of Babcock B-300's... "The Businessman's Bird"... show sustained production of top quality eggs...often with an additional 20 to 30 eggs per bird housed over other strains. Come in... look at the records and the B-300... "The Businessman's Bird".



BABCOCK FARMS, INC.
Telephone (717) 626-8561

Weekly New York Egg Market

(From Monday, November 8th to Friday, November 12th)

	Mon.	Tues.	Wed.	Thurs.	Fri.
WHITE					
Fcy. Ex. Large	31½	32½	33½	35½	36½
Large	30	31	32	34	35
Mediums	25	26	27	29	31
Pullets	21	21	22	23	25
Peeweese	15	15	15	16	17
BROWN					
Fcy. Large	36	36	37	37	38
Mediums	Unquoted				
Pullets	Unquoted				
Peeweese	Unquoted				
Standards	25	26	27	28	29
Checks	17	17	17	17	17

Long tone — An active demand maintains on all grades.

Copyright 1971 by Urner Barry Publications

Eastern Pa. and N.J.

Wednesday, November 10

Prices generally unchanged on light type hens. Demand remains fair but often less aggressive than expected as call for finished product often slow. Off-farm movement spotty ranging heavy in some quarters to only moderate in others. Demand for heavy hens fair at unchanged prices. Offerings adequate for current needs. Prices paid at farm: Light type hens 4½-7 mostly 6½-7 in Pennsylvania mostly 6 in New Jersey. Heavy type hens 13-14.

New York Eggs

Wednesday, November 10

Prices trended higher. Selling activity improved considerably yesterdays price advances as buyers bought ahead of contemplated further advances. Extra large continues in slow movement and stocks were tending to burdensome proportions. Large and mediums are in better balance with needs with large temporarily tight in some quarters due to over-selling. Interest in standards is returning to the fore as Nest Run arrivals decline. Carton orders steady to improved. Undertone, while good, is unsettled as demand through jobbing and retail channels is still draggy.

Swine Meeting Thursday

A Swine Management meeting will be held at the Farm and Home Center at 7:30 p.m. Thursday, November 18.

Dwight Younkin, Penn State University Livestock Extension specialist, will speak on "Swine Behavior in Confinement."

Glenn R. Kean, Penn State University animal science department, will discuss "Selling the Pork you Produce."

In urging all swine breeders and feeders to attend the meeting, Max Smith, Lancaster County ag agent, reported that Younkin's presentation will help

producers planning to increase the size of their herds in confinement or on limited acreage. Kean's remarks will cover the problems of marketing and processing. He will also comment on high pork retail prices when live hog prices are low.

Tuesday night, January 25, should also be marked on your calendar as another swine producers meeting night, Smith noted.

Try A Classified —

WE
SPECIALIZE
IN

**LEGHORN
FOWL**

Contact Us For A Competitive Price

**GOOD'S
POULTRY, INC.**

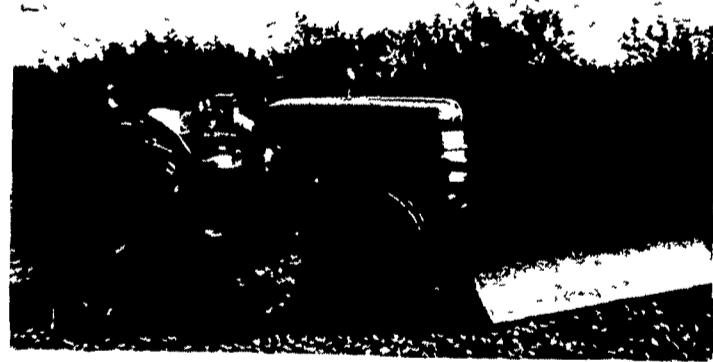
Columbia RD1, Pa. Phone 717-684-2215
or 684-2228

"Serving Eastern Penna. Since 1943"

FARMERS ARE YOU LOOKING FOR A SMALL 28 H.P. LOADER TRACTOR

SUCH AS THE

LOW PROFILE MODEL 154 LEYLAND



With These Outstanding Features

- Low initial cost per hp
- Positive traction
- Low cost fuel consumption per hour — must see it to believe it.
- Excellent tractor for scraping barn yards
- PTO on the go
- Ideal manure loader tractor
- Live hydraulic
- 540 rpm also 1000 rpm PTO
- 9 forward speeds — 2 reverse
- Good general purpose tractor

Big Interest Money Returned To You When You Buy a Leyland 28-55- or 70 H.P. Tractor

ASK FOR A FREE DEMONSTRATION.

DEPENDABLE PARTS, SALES AND SERVICE

SHENK'S FARM SERVICE

R. D. 4, Lititz, Pa.

Ph. 626-4355

Woods Drive 2 Miles East Of Route 501

My Neighbors



"No Riot really—just our group of art experts discussing what artwork to use on our checks."