



A group of Connecticut Young Farmers are shown during a recent tour of Lancaster County discussing the trench silo feeding program on the Cliff Holloway farm. In the background is the trench and the trench silo unloader. Besides visits to southern Lancaster County farms, the trip included a tour of the New Holland Division of Sperry Rand.

Hosted by the Solanco Ag Department, the Young Farmers from Woodrow Wilson High School, Middletown, Conn., included: left to right, Robert Cone, Tony Noel, Roger Lawrence (ag teacher), Richard Brock, Stephen Jenson, Robert Peace (ag teacher), Cliff Holloway, Ray Olander and Wilber Hills.

## PLANNING A NEW FARM OPERATION?

### WE SPECIALIZE IN COMPLETE SYSTEMS

FREE STALL SYSTEMS  
STANCHION BARN  
BEEF BARN  
FEEDING LOTS

BROILER HOUSES  
CAGE LAYER HOUSES  
HOG HOUSES  
EQUIPMENT



**JAMESWAY SALES & SERVICE**  
One Source for Buildings and Equipment



DESIGNERS and BUILDERS OF SYSTEMS

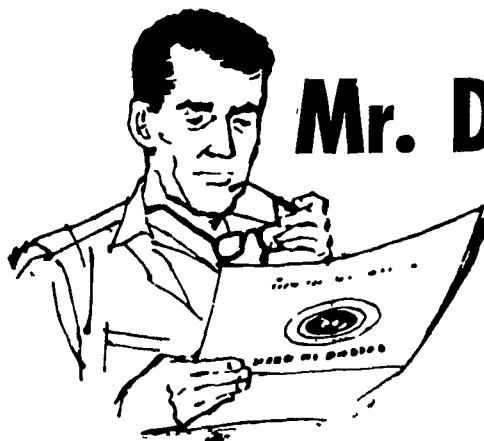
Rt. 2, (Farmersville) • EPHRATA, PA. 17522 • Ph: (717) 354-5374

## Help Us Serve You

Don't assume we know about your farm organization's meeting. To get your meeting on our Farm Calendar, it's safer to assume we don't know.

Remind us by calling 394-3047 or 626-2191 or by writing to Lancaster Farming, 22 E. Main St., Lititz, Pa. 17543. You'll be helping us to serve you better.

P.S. — If you're not sure you told us already, we don't mind hearing from you again.



## Mr. Dairyman

## HOW MUCH WOULD AN EXTRA TON OF MILK PER COW MEAN TO YOU?

Many dairymen who have challenged their herds — who have fed for more milk — have found that their cows can often produce as much as 2,000 extra pounds of milk per year when fed the PIONEER way.

Management for profit the PIONEER way can mean big additional earnings for you. That's why thousands of successful dairymen rely on PIONEER feeds and feeding programs to help them milk out the total bred-in production capability of their cows — to help them get more profit from each cow.

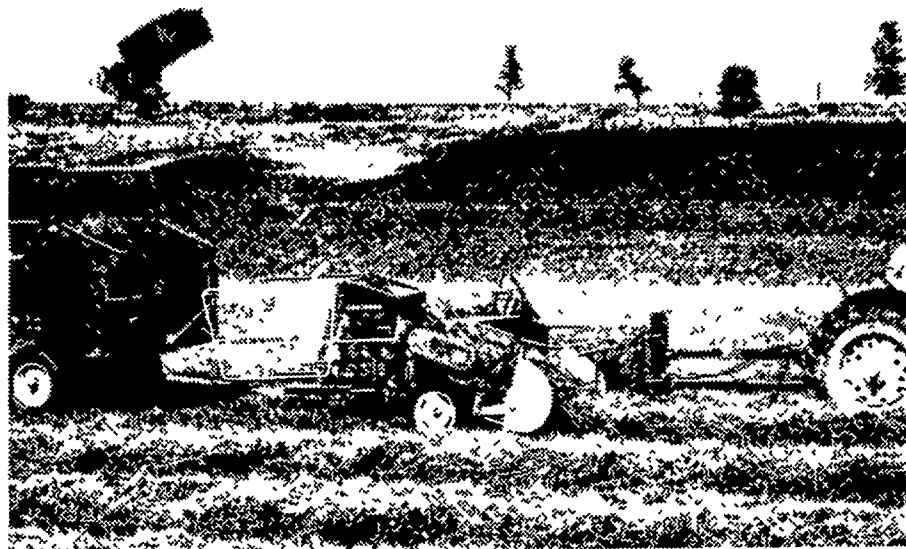
Challenge your herd! Find out how good your cows really are. Stop in soon and talk over your production problems with us. Remember, there's a PIONEER feeding program to fit your need.



### ELMER M. SHREINER

Trading as Good's Feed Mill  
Specializing in DAIRY & HOG FEEDS  
New Providence, Pa.  
Phone 786-2500

## Full-sized baler with a compact price



John Deere 24-T Twine-Tie Baler

The John Deere 24-T Twine-Tie Baler has a low price tag on it. And for this low price you get big-baler benefits. You get big capacity. You get accurate tying. You get neat, 14x18 bales that are tied for keeps. You get high-quality construction. You get a baler protected by many safety devices. Have your 24-T equipped with the Bale Ejector and baling and loading become a fast, easy, one-man job. See us for full details on a John Deere 24-T Baler with Bale Ejector. The Credit Plan makes it easy to purchase machines from *The Long Green Line*.

Buy A New John Deere Baler . . . No Finance  
Charges until April 1, 1972.



Shotzberger's  
Elm 665-2141

Landis Bros. Inc.  
Lancaster 393-3906

Wenger Implement, Inc.  
The Buck 284-4141

M. S. Yearsley & Sons  
West Chester 696-2990

A. B. C. Groff, Inc.  
New Holland 354-4191

## NOW! Prepare For Seeding

Call us for prompt service on:

**LIMESTONE** - Truck Spread  
Fast Service

**FERTILIZER** - 0-20-20

10-10-10 5-10-10 4-16-16

And many other bulk blended analysis.

Available in bags, bulk

Trailer spreaders or custom truck spreading.

REMEMBER US FOR

## ANHYDROUS AMMONIA

AFTER FALL PLOWING!

Don't forget to top dress alfalfa this fall  
Available:

0-26-26, 0-18-36

Boron and Magnesium can be added



## ORGANIC PLANT FOOD CO.

GROFFTOWN RD.  
LANCASTER, PA.

Ph. 392-4963 or 392-0374