

# Eastern

(Continued from Page 22)  
such as a typhoid outbreak. But he notes that some individual families have experienced an unusual amount of sickness with symptoms of the flu. In some instances, this sickness has been cleared up when a new, pure water source was developed or the existing system purified.  
In the Eastern District program each of the students has an opportunity to interpret the results from the laboratory

analysis so that he can explain the results to his parents. A copy of the results also is sent to the parent.

Superintendent Simon considers the program an educational tool for the improvement of health in the school district.

Simon notes, "For some reason, everybody thinks water is safe." He said that nobody ever questions the source of water or its purity.

That is, nobody did until the school district launched its testing program.

# It's Dutch Family Festival Time Again at Guernsey Sales Pavilion

The Dutch Family Festival is here again, after a successful run last summer at the Guernsey Sales Pavilion, Route 30 East of

Lancaster. Near magic has been worked on the Guernsey Barn once again to turn it into a hive of excitement, for visiting tour-

ists and local people.

The Festival, under the guidance of Merle Good of Lititz, has been expanded into a diverse package of family entertainment, offering patrons two or three features to choose between continually, all for one admission price. The activity begins June 25 and runs daily (except Sundays) from 10:30 a.m. to 7:30 p.m. until August 28.

"Dutch Family Festival is a unique venture in self-interpretation done by local Mennonites," explains Good, himself of the Mennonite faith. This year for the first, there will be craftsmen working on location in wood and lathe work (George Martin of Elizabethtown), copper tooling (Mrs. Ann Fields of Lancaster), quilting (Mrs. Emma Weaver of New Holland), spinning and weaving (Evelyn Keener of Elizabethtown), as well as numerous demonstrations of canning, shoo-fly pie and bread baking, sauerkraut making, meat smoking and tobacco drying and stripping, games farm children play, crop growing, the farm layout and the cow story. Heading the craft department as guides are Ernest Hess and Don Raybill.

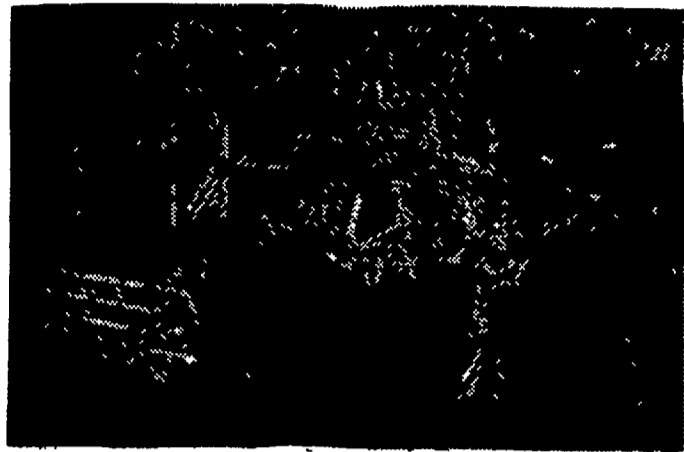
Visitors to the Festival will also see and hear the Pageant of the Mennonites and Amish performed live by an all Mennonite cast: Marilyn Natziger, Pat Paer, John J. Miller, and Nate Showalter on weekdays and Judy Keener, Shirley Baer, Don Clymer and Luke Good on Saturdays. This Pageant tells of the way of life of the Plain People, their faith and their part in the world today.

In addition there will be farm animals, award-winning films about farm animals, seven large screens with a slide montage of the Lancaster County country side and people, and original music performed live, all within the metamorphosed barn-auditorium.

Responsible for writing, producing, and directing the Dutch Family Festival is Merle Good of Lititz. He has also written the popular *Strangers at the Mill* and *Who Burned the Barn Down?* The Festival runs from June 25 through August 28 from 10:30 a.m. to 7:30 p.m. daily except Sundays.



MINI-DONKEY at the zoo in Frankfurt, West Germany, is less than two feet high. Named "Twiggy," the little package is a big favorite with children.



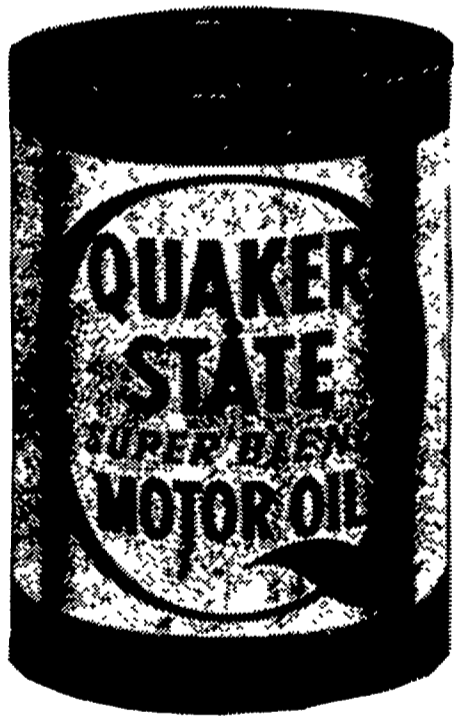
## FARM TIRE SERVICE

Call us . . . for fast action.  
Fully equipped truck for on the farm or in the field.

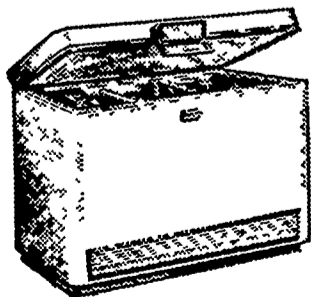
## SWEIGART FIRESTONE

329 W. High St., Manheim, Pa.  
Phone 665-2258 or 665-3603

## Promotion Special



Motor Oils      Super Blends  
**42¢ qt.**      **49¢ qt.**



## REVCO

THE CUSTOM CHEST FREEZER THAT SAVES YOU MONEY.

## WALTER BINKLEY & SON

R.D. 4, Lititz, Pa.      Phone 626-2344 - 626-4705

## Start raising more and better Calves the Easy NURS-ETTE way

No more carrying pails of warm water or hand mixing milk replacer. Just fill the hopper of the NURS-ETTE with milk replacer and the NURS-ETTE will mix milk replacer and warm water and keep it warm until calf nurses the mix (approx. 14 oz.)

Then it will mix a fresh batch of water and replacer.

## YOUNG BROS.

NURS-ETTE SALES AND SERVICE

- Ph. 717-548-2462

Peach Bottom, R. D. 1, Pa. 17563

Litter-Life

Biologically Alive

Kelp Products

Livestock Mineral



## Manufacturers of EARTH-RITE

Bio-Dynamic Soil Treatment

Phone 717-442-4171

R. D. #1, Gap, Pa. 17527

Sales Rep. — Ralph J. Benner

Floyd H. Ranck

## Subscribe Now

We know many of our readers regularly read a friend's or relative's copy of our publication.

We don't mind. We appreciate all our readers.

But we wonder if everyone realizes how easy it is to receive our publication.

On a yearly subscription in Lancaster County, the cost is less than four cents a week.

On a two-year subscription in Lancaster County, it's less than three cents a week.

Because mailing rates are higher for out-of-county subscriptions, we have to charge more. But out-of-county readers can get the paper delivered every week for a yearly subscription which costs less than six cents a week and a two year subscription for less than five cents a week.

Think about it. In these times of high and rising costs, we're sure you can't find a better bargain anywhere.

Call us at 394-3047 or 626-2191. Or write to Lancaster Farming, P. O. Box 266, Lititz, Pa. 17543.