

### Garden Spot 4-H Club

The 4-H Garden Spot Community Club met recently and toured Girvin's Greenhouses in Leola.

A business meeting was held at the farm of J. Donald Myer. A service project committee was appointed.

Rhonda Myer was chosen Senior Queen candidate.

News Reporter,  
Jeff Risser

### Elm-Pennryn 4-H Sewing

The Elm-Pennryn 4-H Sewing Club met June 15 at the Mannheim Central Junior High School.

The club discussed taking care of the rooms and when the next meeting will be. Then we went into our groups and talked about our projects.

Refreshments were served by Cindy Enck and Cathy and Nancy Miller.

News Reporter,  
Cindy Enck

## 4-H Club News

### Classy Clipper 4-H Club

The Landisville Classy Clipper 4-H Club met in the Hempfield High School with 37 members present.

Suzanne Irwin reported on a recent meeting of County 4-H Council. Plans are being made to entertain visiting 4-H members from Wisconsin.

Lancaster County clubs plan an exchange trip to North Carolina.

The next meeting will be from 9 a.m. to 11 a.m. June 23. Adult leaders are Mrs. Walter Leser, Mrs. John Ruhl and Mrs. David Yoder.

News Reporter,  
Connie Yoder

### Hoagie Sale Planned

The Lancaster County 4-H County Council has scheduled a hoagie sale.

Order deadline is July 6 and pick up is from 9 till 11 a.m. July 10. Order your hoagies by calling 394-6851.

### Mount Joy 4-H Stitchers

The Mount Joy 4-H Stitchers held its first sewing meeting Monday, June 21. Lu Ann Bienneman led the group in the 4-H pledge and the salute to the flag.

Denise Esbenschade led some songs.

Lu Ann Bienneman demonstrated her sewing box and tools. Then the club divided into sewing groups and started projects.

News Reporter,  
Debbie Becker

More 4-H News  
on Page 20

### Busy Bakers Cooking

The Busy Bakers 4-H Cooking Club had its second meeting June 22.

The secretary, Karen Barnhart, called the roll and read the minutes of the last meeting. The club members then paid their dues.

Club leader Marian Bienneman led the girls in a 4-H song and played a game.

The girls wore green aprons and chokers which the leaders had made. The girls made Honey-Milk balls and they turned out fine.

The girls in 4-H are selling different kinds of cards. The money will be used for the Round-up.

News Reporter,  
Sandy Emenheiser

## Start raising more and better Calves the Easy NURS-ETTE way

No more carrying pails of warm water or hand mixing milk replacer. Just fill the hopper of the NURS-ETTE with milk replacer and the NURS-ETTE will mix milk replacer and warm water and keep it warm until calf nurses the mix (approx. 14 oz.).

Then it will mix a fresh batch of water and replacer.

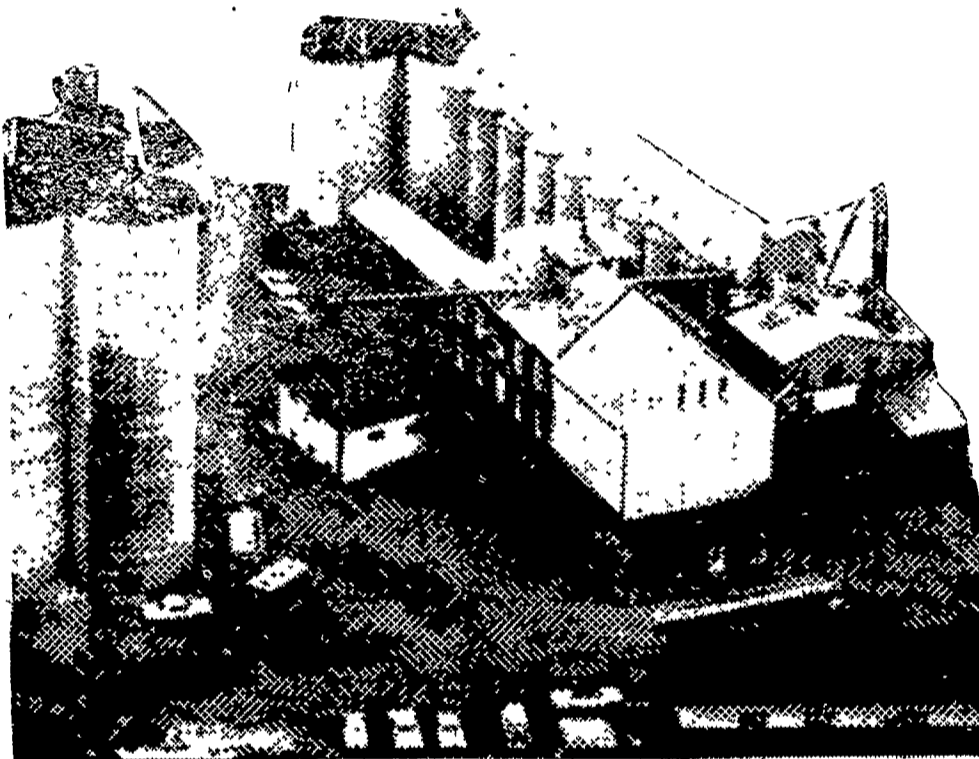
## YOUNG BROS.

NURS-ETTE SALES AND SERVICE

Ph. 717-548-2462

Peach Bottom, R. D. 1, Pa. 17563

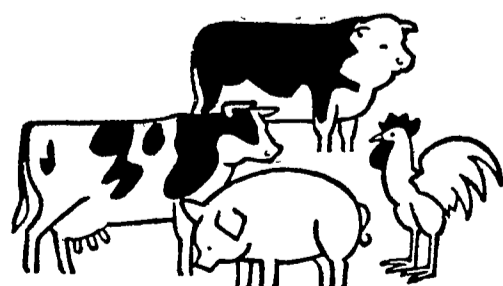
## AT FLEETWOOD . . . BUYERS OF WHEAT • BARLEY • OATS • CORN



Grain Elevator, Feed Warehouse & Flour Mill, Fleetwood, Pa.

## MODERN FACILITIES TO SERVE YOU FAST

- 50 ft. Dial Scale
- 50 ft. Truck Dump
- 1,000 bu. Dumping Pit
- 2,000 bu. per hour Grain Dryer
- Ample Storage



Manufacturers of



FEEDS

## F. M. BROWN'S SONS, INC.

Birdsboro  
582-2741

Fleetwood  
944-7654

Sinking Spring  
678-4567

## Commonwealth National Agri-Loan Corp.

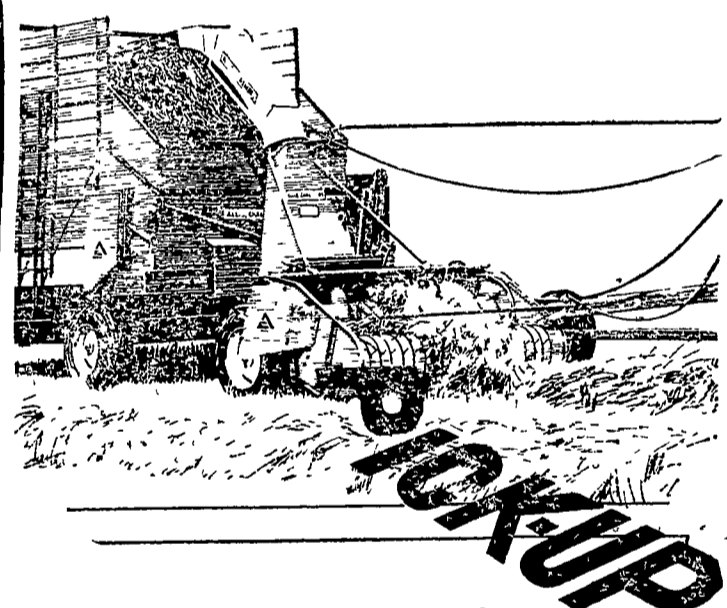


A subsidiary of Commonwealth National Bank

Serving  
Agriculture  
in

South Central Pennsylvania

Member FDIC



## MORE FORAGE PROFITS . . . WITH AN ALLIS-CHALMERS FORAGE HARVESTER

YOU give yourself a full cut of forage profits when you choose the Allis-Chalmers Forage Harvester with windrow pick-up attachment. Depending on the size and condition of the crop, you can adjust the size of the windrows to match its big capacity. You operate at full capacity . . . even in light growth areas.

Big, 6½-foot width makes it easy to stay on even the biggest windrows. And dense or light, the pick-up fingers will comb the stubble clean. Windrows are controlled by the "Short-Feed" system so that material reaches the cylinder in a steady, uniform stream for full-capacity chopping.

It takes only minutes to switch from pick-up attachment to direct cut or row-crop attachment . . . and the big capacity is still with you. You get a full cut of performance for any crop by choosing the Allis-Chalmers Forage Harvester.



Grumelli Farm Service  
Quarryville, Pa.

Nissley Farm Service  
Washington Boro, Pa.

L. H. Brubaker  
Lancaster, Pa.

Roy H. Buch, Inc.  
Ephrata, R. D. 2

N. G. Myers & Son  
Rheems, Pa.