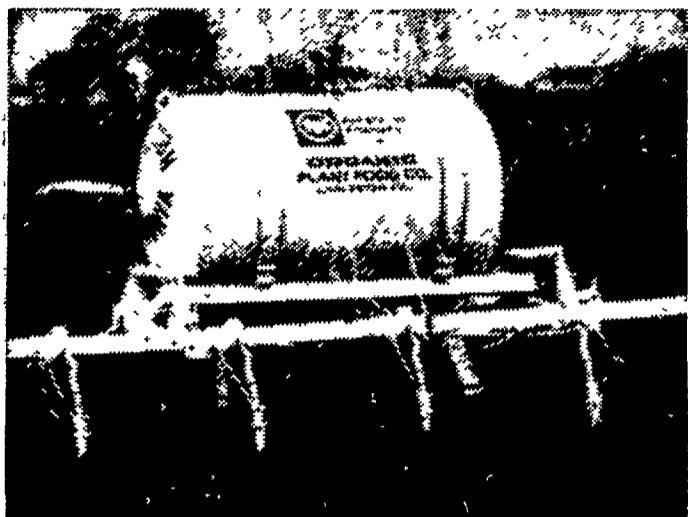


# CORN NEEDS A SHOT OF ANHYDROUS AMMONIA



Siddress corn now for the yield you are planning for. You still have time to put it on.

Did you topdress your alfalfa grass and pasture fields? Don't leave your fields go down hill.

- Truck spread or
- Trailer spreaders

Call and see how fast we can serve you.



## ORGANIC PLANT FOOD CO.

GROFFTOWN RD.  
LANCASTER, PA.

Ph. 392-4963 or 392-0374

# Conservation Tour Outlined

The Lancaster County Soil and Water Conservation District last week announced a seven stop tour in the area west of Millersville for persons interested in seeing conservation practices on land.

Starting last Saturday the tour will last for three to four months through the summer.

Called a "Drive Yourself Amos" tour, the spots of interest are marked by the conservation district's new symbol, a figure called Amos. The Amos signs point to the area of the conservation and lists some of the practices being used, such as contour strip cropping, conservation tour farming, terraces, water ways, and no-till farming.

turn left and on the right is the fourth stop at the Jay Frey farm.

Continue on Breneman Road, turning left at the T to Safe Harbor Road, turn right for about one quarter mile, then turn left on Indian Run Road, and stay on Indian Run Road by turning right past Stehman's Church. Just beyond the church is the fifth Amos sign at the Kreider-Diller farm.

Proceed one-half mile to the T in the road at the Walnut Hill Road, turn left and proceed across Little Conestoga Creek, make a hard right on Creek Road and go for one-tenth mile, turn right on Rock Hill Road for one-half mile to the T, then go left.

After crossing the Conestoga Creek, the road becomes Long Lane. At this point, note the Fish Commission access on the left as you cross the Conestoga.

Proceed on Long Lane for one-half mile to the sixth Amos sign at the Robert Hainish farm.

Continue for one-half mile to the stop sign, turn left on Stehman Road. From here to the Conestoga Creek notice the roadside erosion control, including crown vetch, by the Pennsylvania Department of Transportation.

After crossing the Conestoga, there are two conservation signs at the Amos Funk farm.

Then proceed straight ahead to the stop sign at Millersville which is back at the starting point.

Elsewhere, the district urged FFA members desiring to be a host for a city youth during the three day program July 21-23, to contact their vo-ag teacher. Homes still are needed for 18 youths. The program is designed to show city youths farm life.



*Business Man*  
MR. DAIRYMAN

**BUILD YOUR MANAGEMENT-FOR-PROFIT PROGRAM AROUND PIONEER FEEDS...**

Today's cows are capable of high level production — often as much as 2,000 lbs. more milk per cow per year than they are producing. PIONEER feeds and feeding programs can help you get those extra tons of milk from your cows. Challenge your herd. Feed the PIONEER way . . . find out how good your herd really is.

Stop in and see us. WE'LL help you develop an all around management for profit program that will put profit dollars in your pocket.



## ELMER M. SHREINER

Trading as Good's Feed Mill  
Specializing in DAIRY & HOG FEEDS  
New Providence, Pa.  
Phone 786-2500



# ALGAE: The Spoiler

Your lake, pond or stream no longer must bear the odor and scummy plague of algae — or the harmful, even lethal, effect it can have on fish, wildlife, animals and humans.

**CUTRINE**, when used as directed, eliminates ALL forms of algae at SAFE limits to other living things.

No other algacide can make that claim. **CUTRINE** has been thoroughly tested and proven in commercial use. It is registered with the U.S.D.A. (No. 8959-1).

Water treated with **CUTRINE** is safe immediately for swimming, fishing, watering, irrigation



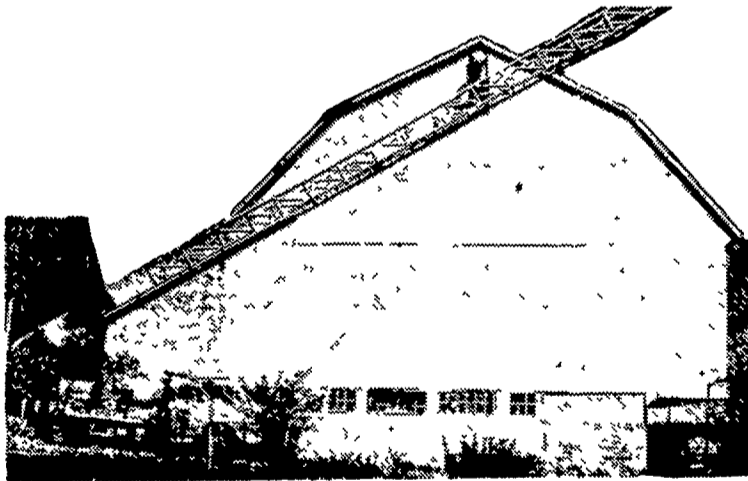
APPLIED BIOCHEMISTS, INC.  
1748 North Farwell Avenue  
Milwaukee, Wisconsin 53202

## P. L. ROHRER & BRO., INC.

Smoketown, Pa.

397-3539

WE USE  
**BRUNING QUALITY PAINT**  
AND IT DOES STAY ON!!!



Aerial Ladder Equipment Used To Paint Your Farm Buildings

- Modern and Efficient Method
- Reasonable Prices
- Over 15 Years Experience
- Spray-on and Brush-in Method Has Proven Satisfactory On Over 1500 Barns Of Our Well Pleased Customers.

## C. RALPH MILLER

Spray-On and Brush-In Painter

R. D. 4, Manheim, Pa. 17545

Ph. 665-3388

# Fred Mast Gets DeKalb Award

Fred Mast has been announced as the winner of the 1971 Twin Valley FFA Chapter DeKalb Agricultural Accomplishment award.

This award is given to the outstanding senior in the vocational agriculture department. The award consists of a certificate and pin which was presented by Francis B Wood, principal of the Twin Valley High School, at the Senior Awards Assembly Friday, May 28.

Mast was chosen to receive this award on the basis of scholarship, leadership, and his supervised farming program. He is the son of Mr and Mrs Ira Mast, Elverson RD2.

A senior at Twin Valley High School, he has held the following FFA offices: chaplain, treasurer, president, Berks County chaplain.

He has received many awards and degrees both in FFA and 4-H. In January, he received the Keystone Farmer Degree, which is presented to the top two per cent of the FFA members in Pennsylvania each year.

His FFA farming program has included field corn, dairy cows, dairy heifers, dairy calves, gardening, and veal calves. After graduation, Mast plans to remain on the farm with his parents.

Mast is the sixth DeKalb Award winner from Twin Valley High School and his name will be engraved with the other winners on a special honors plaque provided by the sponsor.