



"One ton of beef per cow per year" is the result reported from the South Devon beef system in England. The system utilizes double suckling. During a nine-month lactation, one cow nurses her own calf and that of another cow which is being milked. Ordinarily, the two calves

are ready for slaughter at 12 months weighing nearly one ton total. A United Nations report indicates the average milk yield for the South Devon is 6,550 pounds of milk in a 305 day lactation with butterfat content averaging 4.19 per cent.

Nutrition Sells, Research Needed, Official Says

Willis A. Gortner, director of the USDA's Human Nutrition Research Division, says, "There are at least two major myths that I think are blocking public support, or indeed, public demand, for concerted and expanded action in the field of nutrition."

One of the myths, Gortner says, is the idea that nutrition does not sell food. He says this "is just poppycock," and points out the major growth in various

low-calorie items, the success of the growth in sale of orange juice and the shift to polyunsaturated vegetable oils as evi-

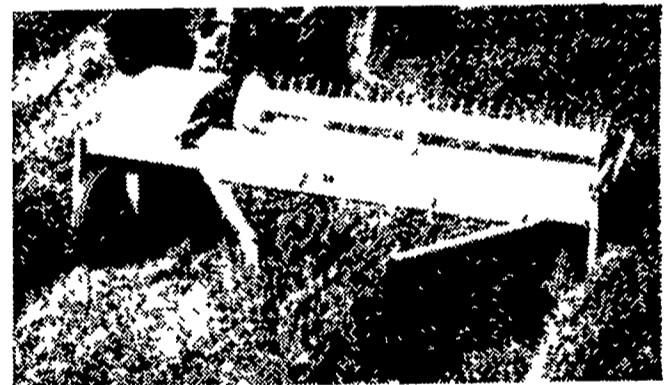
Millers Return Here
Harold and Annetta Miller, EMBMC missionaries in Tanzania, are scheduled to arrive in the United States June 23. Their summer address will be 76 Greenfield Road, Lancaster.

dence that refutes the myth. The other major myth, the nutrition director says, is that people think we know enough about nutrition.

"Let's don't assume that we know enough. We have a national goal that every American child will have the advantage of an adequate, nutritious diet. The means of achieving that goal must include a major commitment to nutrition research."

Let Classifieds Work for You
Call 394-3047 or 626-2191

Mow/ditioner... Mows, conditions... swaths... windrows...



Mow/ditioner from Avco New Idea is a triple-threat haymaker. . . perfect for making hay and silage in crops such as alfalfa, clover and grasses as well as in taller crops such as sorghum and sudan hybrids. In one pass around the field, you mow a 9-foot swath, condition the material and leave it in a fast drying swath or in a fluffy windrow. Cuts field time as much as 65%, reduces operating costs and minimizes soil compaction.



Try a Mow/ditioner on your farm. You're sure to like the way it makes your hay,

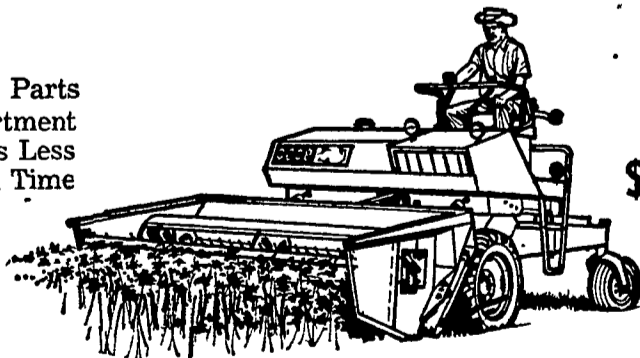
A. B. C. GROFF, INC.
New Holland
A. L. HERR & BRO.
Quarryville
LANDIS BROS., INC.
Lancaster
KINZER EQUIP. CO.
Kinzer
STOLTZFUS
FARM SERVICE
Cochranville, Pa

CHAS. J. McCOMSEY
& SONS
Hickory Hill, Pa.
LONGENECKER
FARM SUPPLY
Rheems
N. G. HERSHEY & SON
Manheim
ROY H. BUCH, INC.
Ephrata, R.D. #2

HESTON BUILT CASE WINDROWER SALE

NEW MODEL CASE 655

Large Parts
Department
Means Less
Down Time



ONLY
\$3800
(Two Only)

Ask About Leasing Any Of Our Fine Line Of Pull Type 7 or 9 Ft. Machines.

Where King-Size Service Is Our Thanks To You

KINZER EQUIPMENT CO.

Your Equipment Center in Lancaster County

Box 23, Kinzer, Pa.

Phone 442-4186 or 768-8916