

Local Persons Visit Modern Shippensburg Incinerator Plant

Waste removal is a farm problem. It's also a problem for everyone else.

Several Lancaster County officials Thursday visited Shippensburg in Cumberland County to study a new system for handling solid wastes.

With the help of a federal grant, Shippensburg is pioneering in a modern incinerator system. The incinerator plant handles waste for about 12,000 to 13,000 persons in the Shippensburg area.

Conducting the tour was Walter Smith, Shippensburg borough manager and formerly manager of New Holland borough.

Also present were some representatives of the Lancaster Manufacturers Association, local Extension personnel, some local government officials and interested citizens. Many other groups, including some from the local area, have already visited the Shippensburg facility.

Discussion of the facility at Shippensburg indicated it is primarily an alternative to landfill operations. But it was noted that about 10 per cent of the refuse which goes into the incinerator comes out as a combination of carbons, metals, glass and ash. This waste still must be disposed of by landfill.

Borough manager Smith said the borough is now working with Monsanto company and other sources in an effort to find uses for the waste that is left over from incineration.

In particular, there is hope that the glass can be recovered and sold, as well as the carbons. It may be possible to recover other materials as well.

Presently the borough is planning to use the material as a filler in road construction.

If uses can be found for the material left over from incineration, it would eliminate the need for landfill following incineration. In addition, it is anticipated that income from sale of the materials could play a major role in recovering costs of operation and in making incineration as a waste disposal system much more economical for more communities.

Basically, the reuse would be a form of waste recycling, a concept which has been receiving growing attention.

One of the primary advantages of the Shippensburg system over existing systems is that it contains an elaborate and effective means of eliminating air pollution. While burning up and eliminating solid wastes, many present plants create an air pollution problem.

Primary drawback of the Shippensburg system for local communities, however, it was indicated, is that it costs much more than landfill operations. Shippensburg pioneered in the incinerator primarily because its soils are not suitable for landfill.

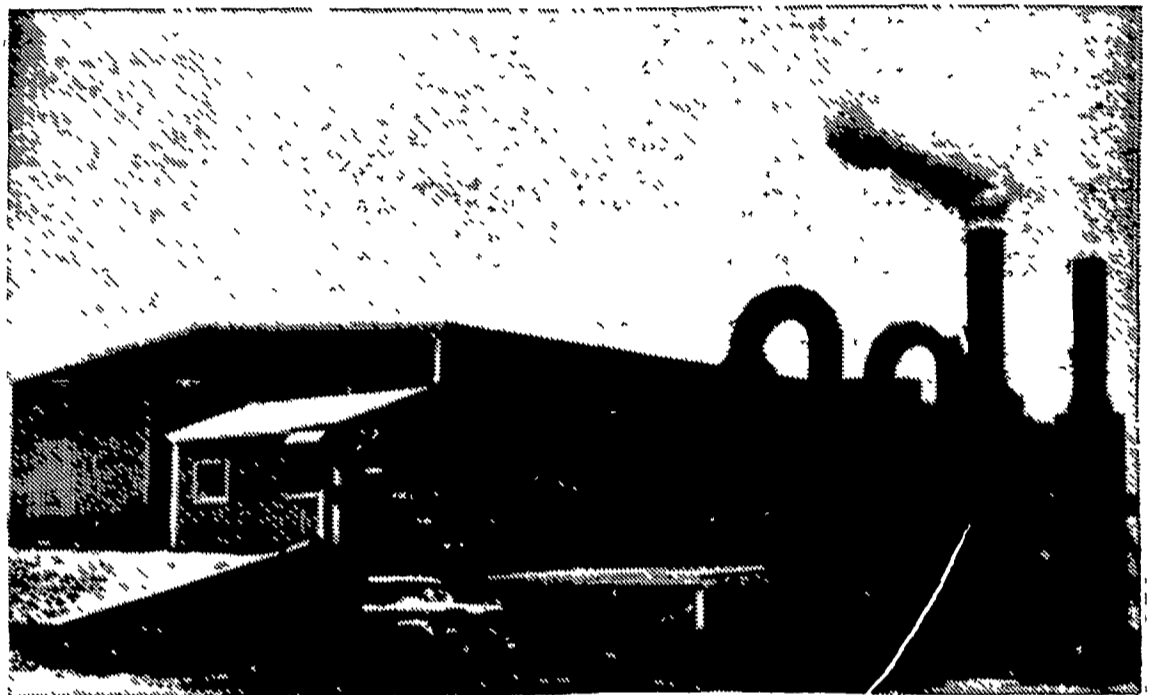
Areas which can use landfill, speakers said, can remove wastes for as low as one dollar per ton, although most run in the area of two to three dollars. Smith said Shippensburg's system has had costs running from six to eight dollars a ton and this did not include the cost of financing.

Smith said the facility cost about \$700,000. A government

(Continued on Page 12)

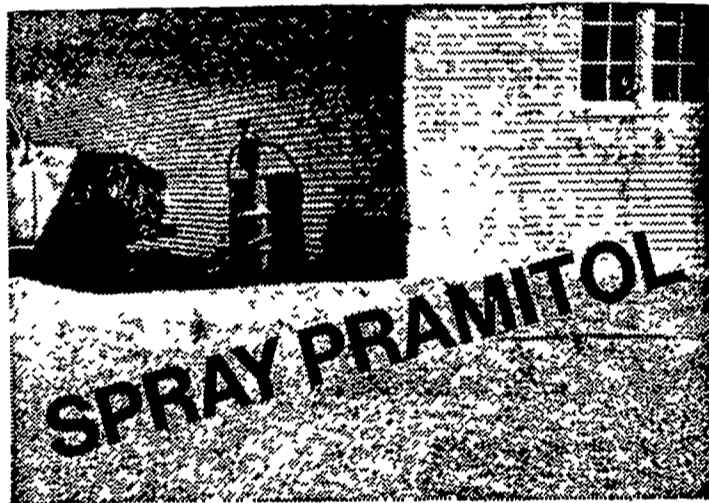


Local visitors discuss various aspects of the Shippensburg incinerator plant Thursday.



This is a view from the front of the incinerator plant at Shippensburg. The smoke is not pollution; the smoke goes

through several cleaning processes and comes out as a nearly clean, white steam.



GET BARE GROUND WEED CONTROL

Pramitol liquid gets rid of weeds where you don't want them. In fences. And around buildings, silos, feedlots, gas tanks, and pumps. It's great for knocking out weeds where you can't mow.

Pramitol liquid works like a charm. One early spray keeps weeds down all season. Try Pramitol 25E liquid. You'll find all kinds of uses for it. Or, if you prefer, use easy to spread Pramitol pellets.

CONTACT

Stevens Feed Mill Royster-Miller Whse.

Stevens, Pa.

Ph: 215-267-2150

Bird-in-Hand, Pa.

Ph: 717-656-7940



Royster Whse.

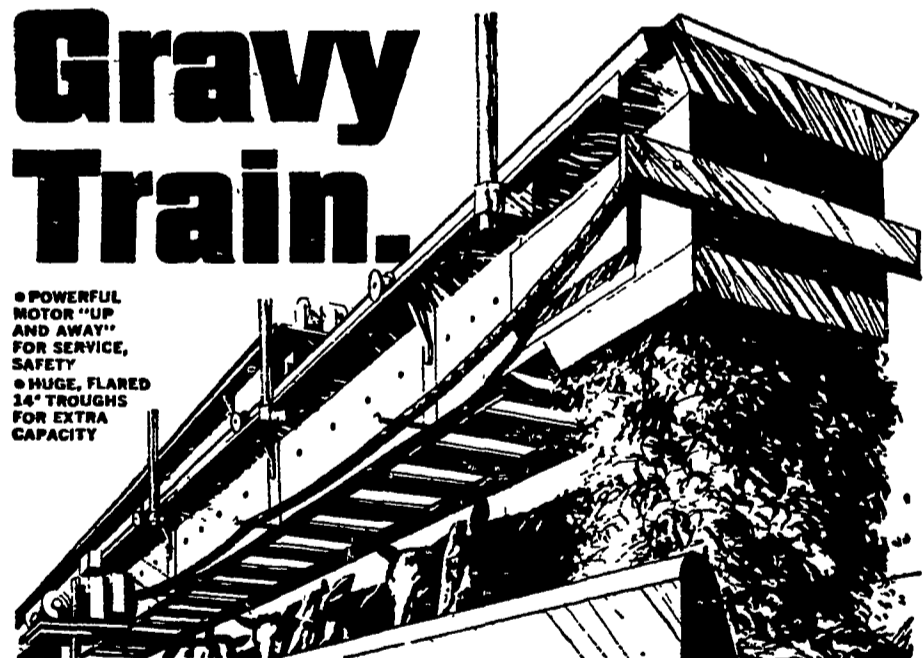
Richland, Pa.

Ph: 717-866-5701

Or Your Local Royster Dealer

Gravy Train.

• POWERFUL MOTOR "UP AND AWAY" FOR SERVICE, SAFETY
• HUGE, FLARED 14" TROUGHS FOR EXTRA CAPACITY



Strength, Performance, Dependability. You've got 'em all with VAN DALE'S NEW TRAVELING BUNK FEEDER.

Van Dale's SCF-1400 is the traveling feeder to put you on the track to faster, more profitable operations. Automatically, it delivers up to 40 tons of silage per hour to bunks on a single chain, continuous "shuttle" service.

Feeder trough chain is No. 67 pin-tle (12,500 lb. strength) and drive chain is C-550 steel (average top strength of 10,000 lbs.). Interlocking, snap-together galvanized metal components reduce erection time as much as 50%. Suspended or floor-mounted, rails are mounted with Van Dale's exclusive clip-on brackets to provide extra-rigid support. Unit adapts to any feeding need in-barn or out-of-doors.

CALEB M. WENGER

R. D. 1
Drumore Center
Quarryville, Pa.
Phone 548-2116

VAN DALE