

# WHAT IS BUX® ?



Bux is a carbamate insecticide developed by Ortho for control of resistant and non-resistant corn rootworms.

## WHY BUX IS BETTER!

Bux is the only corn rootworm insecticide that offers all the following advantages:

- Effective, season-long control with a single application no matter how early you plant, Bux stays active throughout the hatching and larval stages of rootworm development.
- Doesn't leave harmful residues
- Less hazardous to us. There's no need to wear special equipment such as a respirator or goggles, when using Bux.
- No objectionable odor
- Flows freely through application equipment
- Resists leeching in rainy weather
- Won't damage application equipment. Bux is formulated on non-abrasive clay granules. So there's no worry of tearing up your pesticide applicator.
- Recommended throughout corn belt. Bux is recommended by University Entomologists in all states where resistant rootworms are a problem.

**P. L. ROHRER & BRO., INC.**

Smoketown, Pa.

397-3539

## Tevoca FFA Selects Officers

On Tuesday, May 4, the Tevoca Chapter FFA at Brownstown Vo-Tech school elected officers for the 1971-72 term.

Elected as officers of the morning session were: Pam Wood, president; Mike Lewis, vice president; Bob Waltman, treasurer.

Elected as officers of the afternoon session were: David Singer, president; Sue Wargo, vice president; Cheryl Wanger,

secretary, Nina Smith, treasurer, Ann Denlinger, reporter, and Cindy Mohler, sentinel

These newly elected officers attended for the first time the County FFA Leadership Training Conference held at Solanco High School. The conference was held at 2:45 p.m. Thursday, May 13 beginning at 2:45 p.m.

The officers attended the conference to become better acquainted with the duties of their office. They also learned about proper parliamentary procedure to be used during the local chapter meetings.

The Tevoca Chapter was busy during Earth Week by beginning a clean up job at the rear of the school property.

The Chapter plans to meet during the summer for a picnic or swim party. Regular meetings will begin in the fall.

## FHA Banquet Tonight

The Warwick Chapter of Future Homemakers of America will hold its annual Mother and Daughter banquet at 6 p.m. this evening (Thursday) in the high school cafeteria.

The FHA's guests at the covered dish banquet will be their mothers and invited guests from the school and community.

Recognition of the 1970-71 officers will be held. The new officers of the club for 1971-72 will be introduced. The Banker's award will be presented to the outstanding senior girl.

Two outstanding senior FHA members will be receiving awards. The Baking and Egg Decorating contest winners will also be receiving awards.

A Fashion show will be part of the program. All the fashions have been made by the members. Another part of the program will be Miss Arnette Krzysiek who will show slides of her teaching year in Ireland.

## Subscribe Now

We know many of our readers regularly read a friend's or relative's copy of our publication.

We don't mind. We appreciate all our readers.

But we wonder if everyone realizes how easy it is to receive our publication.

On a yearly subscription in Lancaster County, the cost is less than four cents a week.

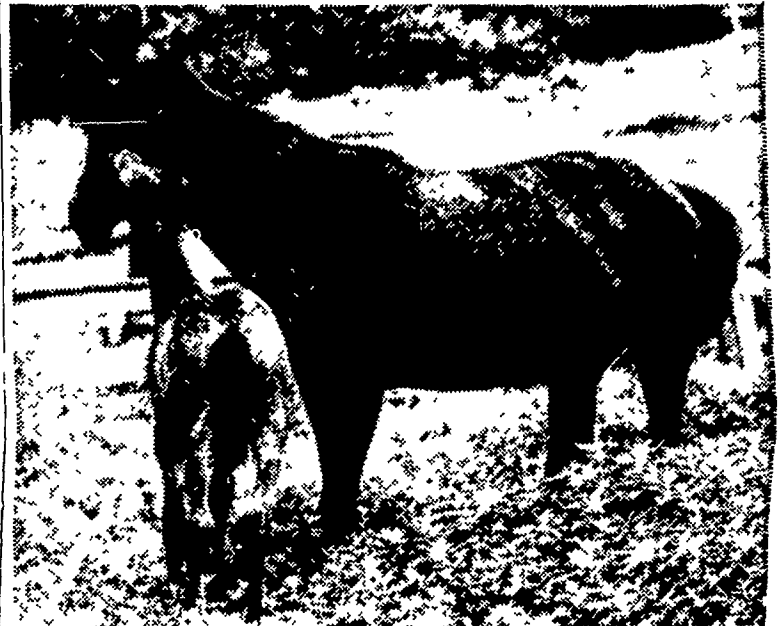
On a two-year subscription in Lancaster County, it's less than three cents a week.

Because mailing rates are higher for out-of-county subscriptions, we have to charge more. But out-of-county readers can get the paper delivered every week for a yearly subscription which costs less than six cents a week and a two year subscription for less than five cents a week.

Think about it. In these times of high and rising costs, we're sure you can't find a better bargain anywhere.

Call us at 394-3047 or 626-2191. Or write to Lancaster Farming, P. O. Box 266, Lititz, Pa. 17543.

# PURINA BIG'UN's here!



## NOW, FROM PURINA'S HORSE RESEARCH CENTER

comes this revolutionary new Chow that's put better than 1½ inches a month in height, 2½ inches in length, and 3 inches a month in heart girth on our own colts and fillies, during the weaning period.

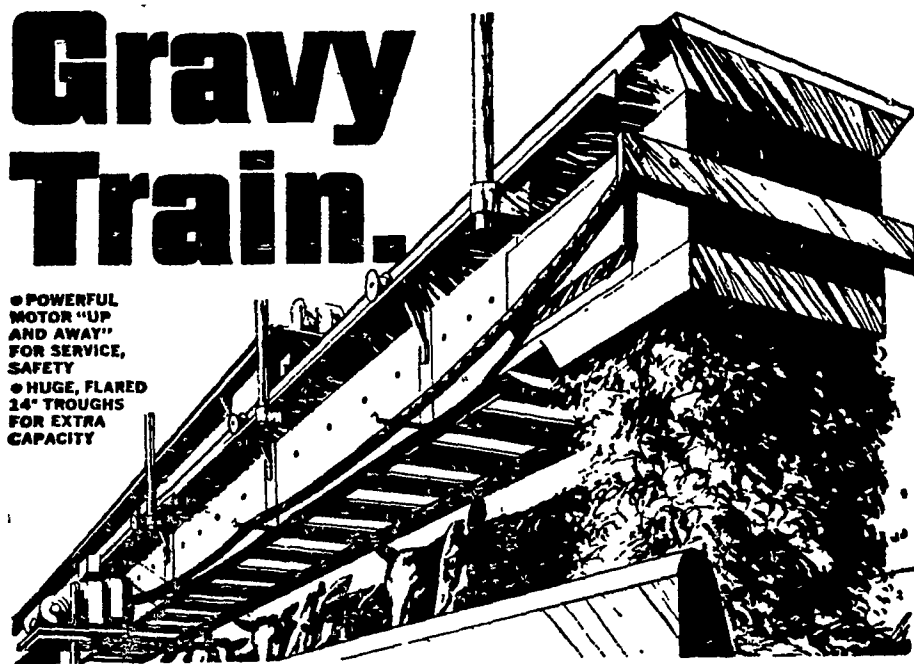


## PURINA BIG'UN

is now available for your young'uns. You can feed it with or without hay. It's in the handy "50" at Purina dealers', where you see the red and white Checkerboard sign.

# Gravy Train.

- POWERFUL MOTOR "UP AND AWAY" FOR SERVICE, SAFETY
- HUGE, FLARED 14" TROUGHS FOR EXTRA CAPACITY



Strength, Performance, Dependability. You've got 'em all with VAN DALE'S NEW TRAVELING BUNK FEEDER.

Van Dale's SCF-1400 is the traveling feeder to put you on the track to faster, more profitable operations. Automatically, it delivers up to 40 tons of silage per hour to bunks on a single chain, continuous "shuttle" service.

Feeder trough chain is No. 67 pin-tle (12,500 lb. strength) and drive chain is C-550 steel (average top strength of 10,000 lbs.). Interlocking, snap-together galvanized metal components reduce erection time as much as 50%. Suspended or floor-mounted, rails are mounted with Van Dale's exclusive clip-on brackets to provide extra-rigid support. Unit adapts to any feeding need in-barn or out-of-doors.

## CALEB M. WENGER

R. D. 1  
Drumore Center  
Quarryville, Pa.  
Phone 548-2116

**VAN DALE**

John J. Hess, II, Inc.  
Ph: 442-4632  
Paradise

West Willow  
Farmers Assn., Inc.  
Ph: 464-3431  
West Willow

John B. Kurtz  
Ph: 354-9251  
R. D. 3, Ephrata

Ira B. Landis  
Ph: 394-7912  
1912 Creek Hill Rd., Lanc.

James High & Sons  
Ph: 354-0301  
Gordonville

Wenger's Feed Mill  
Inc.  
Ph: 367-1195  
Rheems

