

Ida's Notebook

Sometimes it takes such a little thing to cheer us up

Feeling a bit down, I took a look around outside. There was a tiny jenny wren singing its heart out and hopping in and out of a birdhouse which my son built

The early sugar peas were blooming and had peas hanging on an inch long.

Even the older cows were kicking up their heels like heifers as they were put out to pasture. I really enjoy seeing them romp the first time they go into the meadow. Add a little sunshine and a breeze, and we've no excuse for a frown on our face.

As we've just put up a big silo, I had to get in it and try it out for echoes. Now I too know what it feels like to get the last pickle in a jar.



By Ida Risser

Have you ever had your wheels taken out from under

you? I am speaking of car trouble

It seems our cars tiny "klunk, klunk" turned out to be a major part which needed to be ordered. It will take about two weeks, the garage man cheerfully informed us.

So we borrowed a car and within 24 hours it needed a new starter and left us stranded at a shopping center on a rainy night.

But even this didn't keep me home. I'd never driven my husband's six ton truck, but I used it anyway to take the children to the school bus over a mile away. I prefer a car.

About this time of year, when I was a child, we took our annual trip to Northeast, Md. for fish.

It wasn't a few hours drive at that time, but rather a days journey over muddy roads. I remember my father laying burlap bags on the road to get out of mud holes into which our car sank.

The herring, shad and eel were brought home in lard cans and cleaned in tubs of water

One year I managed to back into a tub of bloody water. Whereupon, I was promptly fished out, spanked and sent to bed

Strawberries Featured

(Continued from Page 17)

cups strawberries and add water to make two cups. After dessert is cooked, let it cool

Break angel food cake into pieces and fold into cooled dessert. Place in cake pan and refrigerate at least two hours.

Mrs Ghick says "You can put whipped cream on one to two hours before serving but I prefer to put it on just before serving"

"I wouldn't use more than 1 1/2 cups of pureed strawberries in pudding or it will get too thick and there won't be enough to coat your cake. This is a very simple, quick dessert."

Elsewhere, we have received a letter from R. G. Kamoda, Monongahela, Pa., who wants to know if any of our subscribers can forward a recipe on how to make "a cottage cheese that can be sliced."

He recalls that his father made it, using a culture involving the addition of liquid to heavy milk. "I can't remember what it was, but it sure was a delicious cheese," he noted. Perhaps some of our readers can answer this query in our Dairy Issue.

Kamoda also wants to know if anyone is familiar with the prickly ash, or toothache bush. He found one on a neighbor's land and it fascinated him.

Any interested readers can deal directly with R. G. Kamoda, Box 282, RD1, Monongahela, Pa 15063 or forward it to Lancaster Farming, P.O. Box 266, Lititz, Pa 17543 for publication.



WITH WARM SUMMER BREEZES FILLING THE AIR, the fashion outlook turns-on to Super Accessories to complement a pretty wardrobe. Put a little bit of the Gypsy into your fashion outlook with this attractive hat crocheted of "Red Heart" Knitting Worsted, worked in single crochet and long chain stitches. A double tassel for trim completes the look. For a colorful variation, a woven plaid hat is just the summer pick-me-up your wardrobe needs. Using Red Heart "Wintuk" sport yarn, the pull-on hat is first crocheted, then strands of yarn are woven through spaces to form plaid pattern. Free instructions are available by sending a self-addressed stamped envelope to this publication along with your request for leaflet PC 5463.

MURPHY'S

CAT LITTER

40 lb. Bag

\$1.30

bag

Compare this price anywhere.

M. J. MURPHY CO., INC.

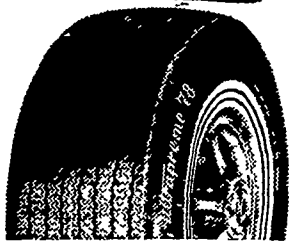
319 E. Fulton St.
Lancaster, Pa.
397-2994

Mon thru Fri.
8 A.M. to 4.30 P.M.

Hercules Tires

A Tire For Every Need

Best Rubber on the Road



HERCULES

ULTRAPREME

The finest passenger tire we've ever offered!

- Latest 2+2 construction
- Polyester cord plies help give a smooth comfortable ride
- Distinctive, elegant sidewall design
- Unique shoulder and tread design
- Available in most popular "78" series sizes

✓ CHECK US FOR PRICE
✓ CHECK US FOR QUALITY

Gehman Bros.

SALES & SERVICE
445-6272

1 mi. N. of Terre Hill, Rt 897
R. 1, East Earl

Roaches Fleas - Ticks Rats or Mice

J. C. Ehrlich Co., Inc.

1278 Loop Rd., Lanc.
PHONE 397-3721

GIVE ALL YOUR HOME-GROWN VEGETABLES A BETTER CHANCE.



ORTHO-GRO Liquid Plant Food nourishes every inch of your vegetable garden. Look:

- A complete and balanced fertilizer, 12-6-6, contains a chelating agent!
- Feeds through both roots and foliage providing quick plant response!
- Suited for use on all vegetables!

CAN ALSO BE USED FOR TOBACCO TRANSPLANTING.

BUY 1ST GALLON FOR \$4.98, GET SECOND GALLON FOR 1 CENT!



We Give Green Stamps



"Look For This Sign"

So. Newport Road
Intercourse, Penna.

Phone (717) 768-8451

SUPER SHOES

Self Service
2750 Columbia Ave.
Lancaster
Lanc. Co.'s Largest Shoe Store
All 1st Quality Super Low Prices

Garber Oil Co.

Texaco Heating Oil
Burner Sales & Service

MOUNT JOY, PA.
Ph. 653-1821

We give farmers credit for the job they do.



Farm Credit loans are made to buy and equip . . . operate or improve . . . farms of every size and type. And, for any need or comfort of the farm family. Farm Credit loans are made on terms and conditions keyed to individual needs. Next time you need financing see Farm Credit where you'll feel at home.

LAND BANK MORTGAGE LOANS / PRODUCTION CREDIT LOANS

Farm Credit

ASSOCIATIONS

411 W. Roseville Rd., Lancaster
Ph. 393-3921

Agway Building, Lebanon
Ph. 273-4506