

Farm Women Societies

Society 1
The Society of Farm Women
held its Mother-Daughter Banquet at the Brunnerville Fire Hall Friday evening Mrs Scott

Garman, chairman of the social committee, presented floral arrangement awards to the following people: Brenda Good, youngest guest; Mrs. Martin Moore, most descendants; Lorraine Da-

gen, daughter coming the greatest distance; Mrs Elmer Hershey, person having the most seeds planted; Miss Jennifer Lapp, person who made Mother's Day gift earliest; Mrs. Raymond Groff, grandmother with most grandsons; Tammy Martin and Donna Walton, tied for having the most grandmothers living and Beverly Wert, person with most exposed buttons on dress.

Seventy-five members and guests attended the banquet Mrs Garman presented the devotions Roll call was answered with an introduction of guests Special guest at the event was Judy Snyder and her mother She is a senior at Warwick High and member of the Future Homemakers of America Club Judy was selected to receive a Savings Bond from the Farm Women Kenneth Grube, also a senior at Warwick and a member of the Future Farmers of America group, was also named as a recipient of a Savings Bond.

Mrs Mary Rose, Lancaster, gave a lecture-demonstration on her "Mitten Folks"

Mrs. Graybill Hollinger, Society president, conducted a short business meeting. The Society voted to donate \$25 to the Child Development Center, which is the Lancaster County project for the year.

Mrs Hollinger appointed Mrs Neil Clark and Miss Rachel Bollinger to be in charge of the Woman of the Year Contest.

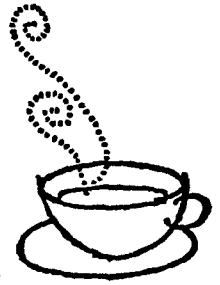
The Lancaster County Societies of Farm Women will sponsor a trip to southern Europe in September The cost is \$875. Interested persons may contact Mrs Hollinger.

Ten members of the local Society attended the Spring Rally at (Continued on Page 26)



A SURE MAN PLEASER THIS SPRING is this handsome ribbed polo shirt knitted of Coats & Clark's "Speed-Cro-Sheen." Treat that special man in your life to this fabulous favorite worked in an attractive variation of the rib stitch pattern. Action minded polo features rolled collar with three button trim and short set-in sleeves. Free instructions are available by sending a self-addressed stamped envelope to Needlecraft Editor, 1/4 this newspaper along with your request for leaflet PK 4478.

Ladies,
Have You Heard? ..



Proper Care Means Long Wear In Furniture

Why does some upholstered furniture become soiled so quickly while some looks almost the same as the day it was bought?

It could be the kind and quality of the fibers used in upholstery fabrics This determines their strength and wearability

But you can add extra strength by the proper treatment of stains and soil The kind of care you give your furniture affects the length of time you can expect it to wear and look presentable Here are a few guidelines that may help you achieve that goal

—Clean furniture regularly Use a brush or vacuum tool to make sure you get soil and dust out of cracks and crevices.

—Remove spots at once The longer you leave a spot or stain on the fabric, the tougher it is to get out Keep information on hand for treating specific stains

—Also, know how to clean upholstery fabrics, using the proper cleaning method A symbol has been added to the style number of many new fabrics to tell you how to clean them: a "W" means a water-based cleaning agent may be used, "S" means only mild, pure, water-free dry cleaning may be used; "W-S" means that you can use a water-based cleaning agent and foam or mild, water-free solvents.

If you see an "X" on the fabric label, do not use a foam or liquid cleaning agent at all Just vacuum or brush the fabric lightly to remove soil

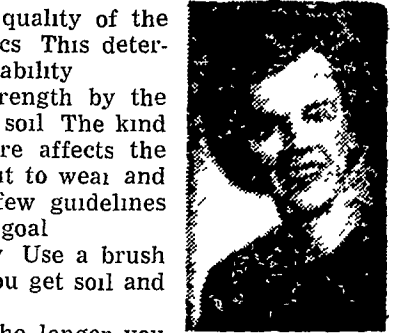
Hopefully, these tips will help you keep your upholstered furniture looking new a little bit longer.

Clothing Guarantees

Most of us are familiar with household appliance guarantees, but how many of us look for guarantees on clothing?

Manufacturers are now guaranteeing the length of time a garment will wear They assure you, the consumer, that you'll get your money back or that they will replace the garment if it fails to meet the guarantee standards.

To take advantage of these guarantees, you, the consumer, must be on your toes You must save the label and the dated



THOMAS

sales slip until the guarantee date runs out.

Be sure and read the garment label It should clearly state the length of time the garment is guaranteed to give normal wear. To prove how long you have had a garment you must have the sales slip, giving the exact date of purchase.

Since these guarantees are fairly new, as you shop be sure to look for this information on the hangtag.

MURPHY'S CAT LITTER

40 lb. Bag

\$1.30

bag

Compare this price anywhere.

M. J. MURPHY CO., INC.

319 E. Fulton St.
Lancaster, Pa.

397-2994

Mon thru Fri
8 A.M. to 4:30 P.M.



Why not put your dollars to work by investing at State Capital Savings? Those few extra dollars each week become a real nest-egg surprisingly fast.

Passbook Accounts pay earnings from the first of the month, if your money is in by the 10th and they're paid right up to the day you withdraw. Your funds are always available and insured to \$20,000, by a Federal agency. State Capital Savings pays the highest rates permissible. Phone, write or stop in for the details on the various types of accounts available to you.

PHONE 238-8252

STATE CAPITAL SAVINGS AND LOAN ASSOCIATION

108 N. Second Street, Harrisburg 17105
Camp Hill Shopping Center • Harrisburg East Mall



Member Federal Home Loan Bank System
Insured up to \$20,000 by Federal Savings and Loan Insurance Corporation

NEW HOLLAND CONCRETE

USE OUR

**HOT
LINE**



SAVE TIME!

CALL YOUR ORDERS DIRECT TO OUR DISPATCHERS FOR IMMEDIATE ATTENTION

WHEN ORDERING BLOCK	CALL (717) 354-2113
WHEN ORDERING READY-MIX	CALL (717) 354-2115

GENERAL OFFICE (717) 354-2111