

## PUBLIC SALE

The undersigned at Clinton Dale in Clinton County One Mile East off Route 64 will sell a full line of Farm Machinery.

**Saturday, May 15, 1971**  
12 o'clock Noon

544 International Tractor (One Year Old), 35 Ferguson Tractor, Gehl Silage Chopper and Grass Head, International 816 Mower and Crimper, Gehl Blower; Massey Ferguson Rake; International Baler; Grove Self-Loading Wagon; Oliver Three Bottom 14" Plows, Ferguson Disc, 3 Pt Hitch, Smoker Elevator, Massey Ferguson Cornplanter, Massey Ferguson Grain Drill, Alps Scraper Blade, Cultivators, Massey Ferguson Spreader; Flat Bed Wagon, Farmway Barn Cleaner; Old Silo Forms; Two Silage Carts; Silage Jack, Silage Distributor; Blower Pipe; Concrete Mixer; Vise; Some Hay and Silage; Two Hydraulic Cylinders; Jamesway Bulk Tank (325 Galon). Three DeLaval Milker Units (Magnetic); Electric Hot Water Heater; 220 Heater; Sinks, 1964 Belair 2-Door Sedan Two Lawnmowers; and other items too numerous to mention

Terms of Sale — CASH

Lunch Will Be Served

**MR. & MRS. JOHN SHIRK**

Clerk — **BILL ARDNER**  
Auctioneers — **CARPERS**

## PUBLIC SALE

**FARM MACHINERY, HOUSEHOLD GOODS**  
½ mile west of Gatesburg — 8 miles east of Warriors Mark, 12 mi. west of State College, Pa.

**Saturday, May 8, 1971**  
STARTING AT 10:30 A.M.

### FARM MACHINERY

H Farmall Tractor, Oliver Drill, 1 Row Corn Picker; Side Delivery Rake; Roanoke Baler, Stone Pulverizer, Coffee Roasters, Antique Lights; Milk Cooler, Milk Cooler Box; Harpoon; Grapple Fork; Old Potato Planter, Cultipacker, Harrow; Double (Milk Bucket) Wash Tub, Two Horse Weeder, Combination Radio and Clock; 2 Large Switch Boxes; Heavy Duty ¼ h.p. Electric Motor, Antique Bottles, 500 Electric Brooder, Lot of Feeders and Waterers, Wooden Churn; Antique Radio with Horn; Lot of Doors, Antique Woodworking Tools, Chest of Drawers, Lawn Mower for repairs; Reel Type Lawn Mower, Pumps, Milk Cans, Junk, and many other articles too numerous to mention

### HOUSEHOLD GOODS

4 Double Beds; ¾ W Bed, Single Bed, Cot, 2 Cribs, Antique Bed, 2 Vanity Dressers, 2 Bureaus, 2 Wash Stands, 4 Stands, Small Mattress; Card Table, Radios, 2 Trunks, 2 pc Living Room Suite, Library Set, Stand and 3 Chairs, Small Desk, 2 Pianos, 1 Ebonywood, Pump Organ; Electric Lamps, Coffee Table, 2 pc Set, Buffet and China Closet; 4 Kitchen Tables; Dining Room Suite, Table, Buffet, China Closet, 4 Chairs, 2 Buffets, 2 Old Fashioned Stoves, 2 Cupboards; 3 Rocking Chairs; 6 Kitchen Chairs, Dropleaf Table; Antique Doughty, Chairs; Electric Sewing Machine, 3 Mirrors, Record Cabinet, Pictures; Guitar; Quart and Pint Jars; Some Dishes; Cooking Utensils

Owner, **GILBERT BARTO**  
Auctioneers — **CARPERS**  
Terms —

**CASH or GOOD CHECK**  
Note Owners and Auctioneers not held responsible in case of accidents.

Lunch will be served by  
Ross S. S. Class

# Public Sale Register

(Continued from Page 33)

Fred Pierkenbrock, Herdsman Sale Managed by The Merryman Company, Sparks, Md

**WED MAY 5—Maryland Herd** Dispersal of 51 High Grade Holstein Dairy Cows at the New Holland Sales Stables. Cows consigned by Glenn Fite, Phone 717-786-2750.

**THURS NIGHT MAY 6—8 P M** Sharp Public Auction—Annual Spring Feeder Sale located 5 miles north of Rt 222 along 897, 2 miles north of Reinholds Sale by Vernon and Ray Kline, Owners, Randal Kline, Auctioneer

**THURS MAY 6—11 A.M.** Big Registered and Grade Heifer Sale at Black & White Holstein Farm, Lancaster, Penna. on U.S. 283 By Pass across from Comet Drive In Theatre or ¼ mile West of Atlantic Breeders' Unit Charles C. Myers, Owner, R. Austin Backus, Sales Mgrs.

**FRI. MAY 7—10 A.M.** Morse's Complete Farm Dispersal located at LeRoy, Pa., 8 miles East of Canton, Pa., 18 miles West of Towanda, Pa., Bradford County Terms by Bruce and Elizabeth Morse, Owners Carl Diller and Everett Kreider Auctioneers, D. O. Rockwell, Sale Mgr.

**FRI. MAY 7—12 Noon** Public Sale of Farm Machinery at the former Lloyd E Kramer Farm, located 3 miles from Mackeyville, Pa., Clinton Co., also off Rt 80, Exit 26, ½ mile west on

Rt 120, turn left Watch for auction signs Sale by Kramer Brothers, Carpers, Auctioneers

**SAT MAY 8—10 30 A.M.** Public Sale of Farm Machinery and Household Goods Located ½ mile west of Gatesburg, 8 miles east of Warriors Mark, 12 miles west of State College, Pa Sale by Gilbert Baate, owner, Carpers, Auctioneers

**MON. MAY 10—Shalco's Sugar** Leaf Division "Colossal" Bul and Cow Sale at Staunton, Virginia.

**TUES. MAY 11—10 30 A M** Public Auction of Farm Machinery, Trucks and Silos located 4 miles south of Coatesville, 3 miles east of Rt 82, 9 miles west of West Chester on Strasburg Road, Mertonville, Chester County, Pa. Sale by George W. Snyder and Isabel R. Snyder, Whitford Sales Co., L Robert Flame, Auctioneer

**WED MAY 12—11 A.M.** London Knoll Complete Registered Holstein Dispersal located in Chester Co., Pa. Take Pa. Route 1 north from Oxford to Route 896, go south 4 miles to farm. Terms by Mrs David Groff, J. Everett Kreider and Carl Diller, Auctioneers and Sales Managers.

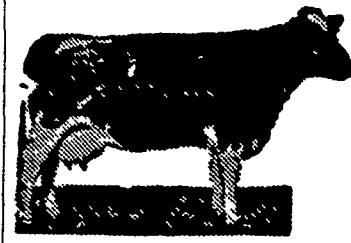
**WRD. MAY 12—9 A.M.** Farm Equipment Sale at Martin's Blue Ball, Pa. Terms by Paul Z. Martin, Martin Auctioneers and Associates.

**FRI. MAY 14—1 P.M.** Spring Feeder Sale at the Lancaster

Union Stockyards All Grades and weights of steers, heifers and bulls Sponsored by Lan-

(Continued on Page 35)

## London Knoll Complete Registered



# HOLSTEIN DISPERSAL

Location — Take Pa. Route 1 north from Oxford to Route 896, go south 4 mile to farm. Chester Co., Pa.

**WEDNESDAY, MAY 12, 1971**

11:00 A. M.

## 100 Registered Holstein Dairy Cattle

55 MILK COWS

19 bred heifers due June 1 till Dec. 1

26 open heifers and calves

Atlantic sired. Mostly Performers and Jacks

### 8 daus. of Apollo Ivanhoe

|                          |         |        |       |
|--------------------------|---------|--------|-------|
| Eleanor — Very good (87) |         |        |       |
| 3 yr.                    | 321 da. | 17,141 | 673 F |
| 4 yr.                    | 347 da. | 18,658 | 779 F |

### Vicky Apollo dau. (86)

|                       |         |        |       |
|-----------------------|---------|--------|-------|
| 3 yr.                 | 305 da. | 15,962 | 587 F |
| 4 yr.                 | 335 da. | 18,260 | 695 F |
| Her dau. Margie 2 yr. |         | 14,695 | 549 F |

### Spot Apollo dau. (84)

|                                  |         |        |       |
|----------------------------------|---------|--------|-------|
| 2-3                              | 305 da. | 12,599 | 510 F |
| 4-4                              | 305 da. | 15,206 | 604 F |
| Her 13 mo. old dau. by Performer |         |        |       |

### 8 daus. of Posch Sovereign Ivanhoe

|                                 |         |        |       |
|---------------------------------|---------|--------|-------|
| Della (85)                      |         |        |       |
| 2-11                            | 279 da. | 10,346 | 517 F |
| Her 8 mo. old calf by Performer |         |        |       |

### Ida Posch dau. (85)

|  |         |          |             |
|--|---------|----------|-------------|
| 4 yrs.   | 305 da. | 14,500 M | 494 F pred. |
| Her dau. Hope by Mbokown Optimist  |         |          |             |
| 1-11   | 305 da. | 13,128 M | 496 F pred. |
| Ida's grand dam Lincoln Regal Bess lifetime production, 124,335 M - 6255 F |         |          |             |

### Bell Posch dau. (81)

|                                 |         |          |       |
|---------------------------------|---------|----------|-------|
| 1-11                            | 305 da. | 13,006 M | 528 F |
| Her 8 mo. old calf by Performer |         |          |       |

### Cochran General dau. Nola 85

|                                      |         |          |             |
|--------------------------------------|---------|----------|-------------|
| 4 yrs.                               | 305 da. | 18,561 M | 694 F       |
| 5 yrs.                               | 305 da. | 19,065 M | 686 F       |
| 3 daus. selling                      |         |          |             |
| Joann Apollo dau. (82)               | 305 da. | 15,991 M | 610 F pred. |
| Nellie Posch dau. (80)               | 305 da. | 16,098 M | 663 F pred. |
| Ola Misty Vale Master Duke dau. (85) | 305 da. | 14,372 M | 516 F pred. |

Aug. 1970 Classification 9 very good, 16 good plus, 18 good, 2 fair.

Last 5 yr. DHIA average 13,501 M 545 F

This herd strongly bred by Ivanhoe Sons.

95% bred by Atlantic Breeders Coop.

90% home raised.

TB and Bangs Certified, Vaccinated, 30 day test.

Calving schedule — May 4, June 4, July 6, Aug. 14, Sept. 11, balance throughout year.

DeLaval #74 vacuum pump, 1 yr. old; 5 DeLaval units, 4 - 50 lb., 1 - 40 lb.

Weaver Electric Silage Cart.

4 Ton Metal Feed Bin.

Auctioneers note: This herd deserves the attention of all dairymen. Well bred for type and production.

Reason for sale: Owner deceased due to accident.

Lunch furnished.

Terms by

**MRS. DAVID GROFF**

Auct. & Sales Managers,  
**J. Everett Kreider**  
**Carl Diller**

For Catalogs write to:  
**J. Everett Kreider, Quarryville R.D. 1, Pa. 17566**

# MULES



**100 Head**  
**Big Work Mules**  
3 to 8 year olds

## 50 DRAFT HORSES

Matched Teams — All Colors

This is the finest selection of horses and mules ever shipped to Lancaster County.

### PRIVATE SALES DAILY

Financing available

## MELVIN KOLB, INC.

621 Willow Road, Lancaster, Pa.  
Phone 393-7459 - 393-6891

### CLARENCE WEIDMAN

Phone 426-3135

## MARYLAND HERD DISPERSAL

**Wednesday, May 5, 1971**

at the  
**NEW HOLLAND SALES STABLES**

**51 Head**

**Holstein High Grade Dairy Cows**

**51 Head**



Consisting of 14 fresh last 2 months, some close springers, 33 second calf Heifers due from June to December.

This is one of the youngest, good uddered herd of cows that I have had for some time. Shipping 1800 lbs. per day with a 3.9 test. All home raised on farm and sold only because of health reasons.

Farmers! — If you want good young cows and the right kind, don't miss this sale.

Consigned by

**GLENN FITE**  
717-786-2750