

**"Petter Power Pays"**  
**WORLD LEADERS IN DIESEL ENGINE DESIGN**




**1½ to 45 H.P.**  
**Continuous Rating**

**MAKE US PROVE IT!**  
**GEHMAN BROS.**  
 Gas and Diesel Engines Sales and Service  
 1 Mile North of Terre Hill on Route 897  
 East Earl, R. D. 1, Pa. Phone 215 445-6272

## Facts Dairymen Should Know

(Continued from Page 13)

made using Brillion seeder or Band-seeding method with 20 pounds of alfalfa and four pounds of grass

3) Starts harvesting first cutting about May 15 with goal to finish first cutting by May 25 Trys to maintain 35 day interval between cuts with last cutting after frost

Gets four cuttings on all fields and five cuts on some fields

4) Fertilizer application minimum of 0-60-120 annually In 1970, two applications of 0-60-120 or total for one year of 0-120-240.

5) No alfalfa weevil spray for past two years but does spray for leafhopper regularly.

6) Estimated average yield in 1970 at six tons H E (hay equivalent) per acre with some fields producing nearly eight tons per acre

He keeps stands for four to five years He makes three cuts the year of establishment and averages three to four tons H E. the establishment year

### Check Heifers

#### For Internal Parasites

Dairy heifers which have spent the winter months in "community-type" pen are often infested with internal parasites

This type of housing provides ideal conditions for parasites to multiply As a result, heifers with only light infestations last fall may now carry sufficient numbers of parasites to seriously affect their growth

If heifers are heavily infested, they cannot maintain normal growth rates regardless of the amount of feed they are given. The problem becomes more serious if the pasture feeding program is less than adequate

Before heifers are turned out to pasture, each group should be checked for internal parasites. The procedure is simple and inexpensive

A small, composite sample of dropping from each pen of heifers should be taken to a veterinarian for examination The number of parasite eggs observed in the droppings will indicate the amount of infestation.

Treatment, if needed, before heifers are turned out to pasture will help to insure normal growth

### Some Agricultural Chemicals Should Be Kept Separated

Pesticide products should not be stored with or near seed, feed and food products

Contamination of one pesticide product with another should be avoided, for example weed killers (herbicides) should be separated from insecticides and fungicides.

Stored pesticides should be checked at regular intervals to make sure that their containers have not developed leaks.

Keep all pesticides in a locked cabinet, away from access by children. Follow instructions on label regarding precautions, safety, and storage suggestions. Keep pesticides in original containers. Empty containers should be burned or buried so that children or livestock cannot get to them.

## Commonwealth National Agri-Loan Corp.



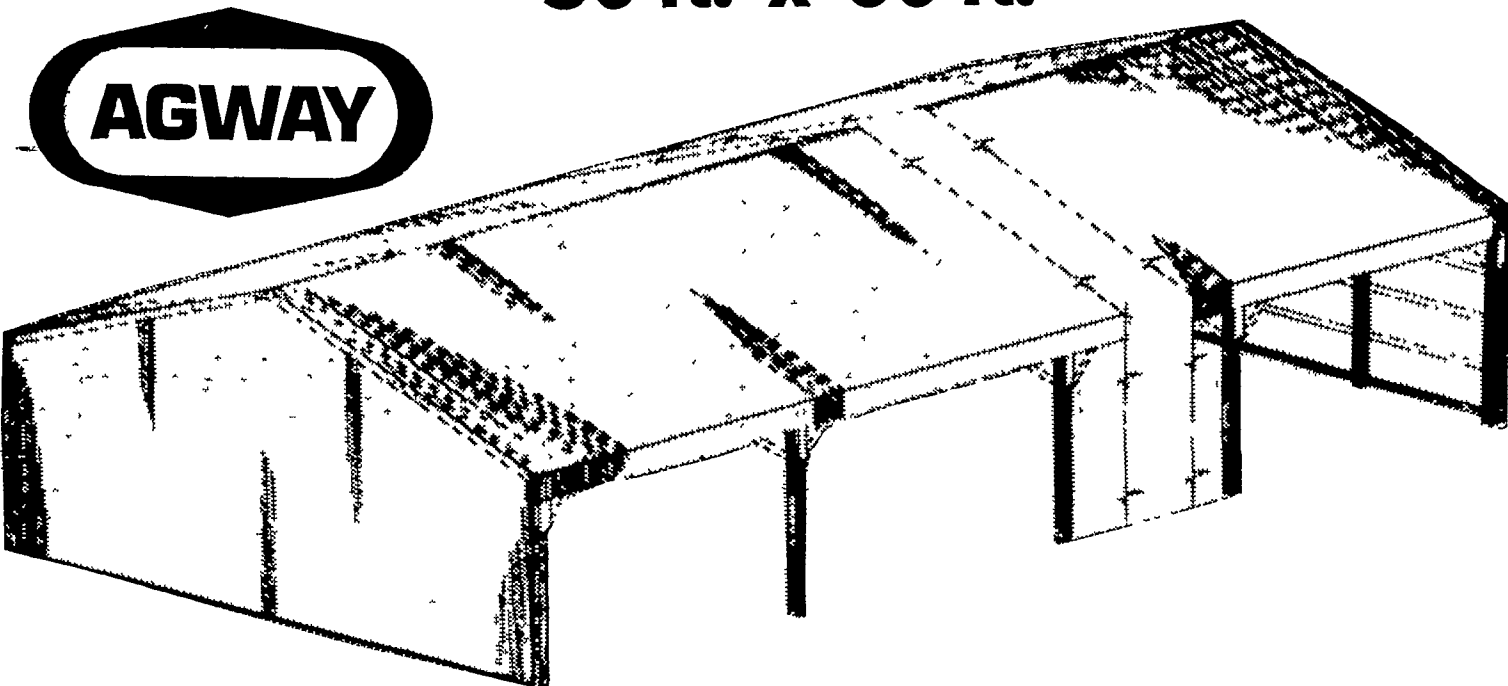
A subsidiary of Commonwealth National Bank

Serving  
 Agriculture  
 in

**South Central Pennsylvania**

Member FDIC

## UTILITY STORAGE BUILDING 30 ft. x 60 ft.



**COMPLETELY ERECTED ON YOUR PREPARED SITE**

- FEATURING
- Clearspan Truss for more storage area
  - Galvanized steel roof & siding for durability
  - 10' 6" clearance to store large equipment
  - One full year guaranty on material & workmanship
  - Contract Price — nothing extra to pay later

Call Fred Kerlin or Harold Kinsey, Farm Systems Salesmen  
 to complete the contract agreements.

We Also Construct Dairy, Poultry, Beef Cattle, Horse,  
 Hog and Other Buildings.

**1/2 PRICE PAINT SALE**  
 On many of our Exterior AGWAY Paints.

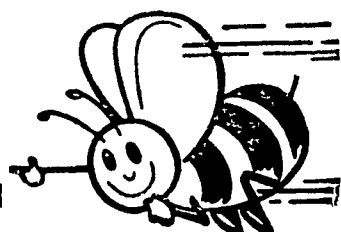
1st COME 1st SERVED



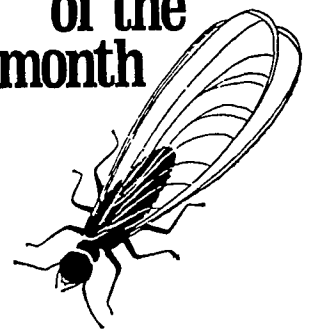
## BEE-LINE SUPPLY CENTER

1027 Dillerville Road, Lancaster

Ph. 397-4761



## Home-wrecker of the month



### A termite

Don't let this little beast and her friends eat you out of house and home  
 Call the professionals for a free inspection and consultation.



**J.C. EHRlich** Co Inc  
 1278 LOOP ROAD  
 Lancaster, Pa. 17604  
 397-3721