

Fultonway Farms Holsteins Cited

Two cows in the herd of J. Mowery Frey & Sons, Fultonway Farms, Lancaster, have been cited by the Holstein-Friesian Association of America.

An official production record exceeding a half ton of butterfat has been completed by Fultonway Ivanhoe Rae 4977152 (VG).

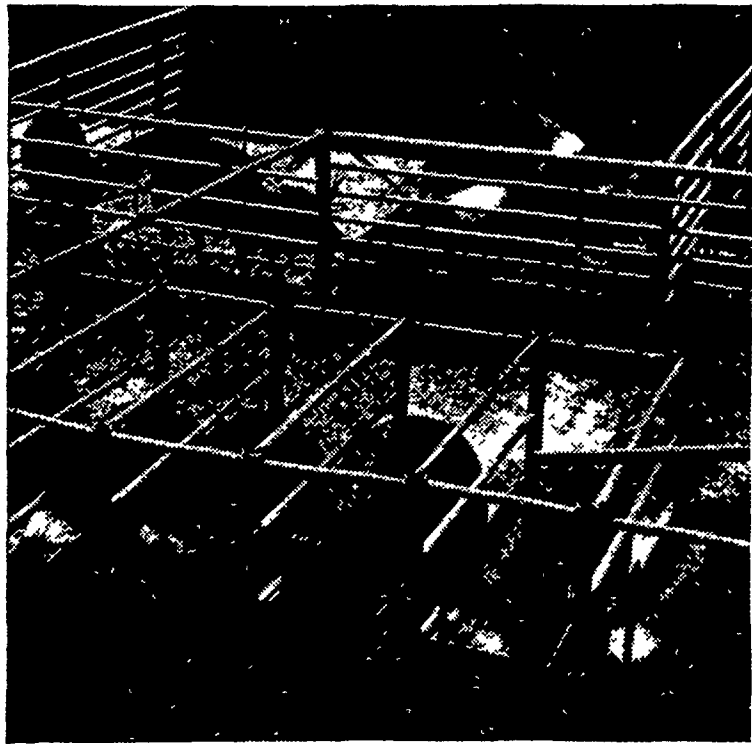
The cow ranks as among 22 Registered Holsteins to complete five yearly 1,000 pound butterfat records.

The Fultonway Farms animal had an official record of 22,386 pounds of milk and 1,078 pounds of butterfat in 365 days. She started her lactation at the age of 10 years and five months and was milked twice daily. She was sired by Osborndale Ivanhoe.

Another Fultonway Farms animal, Miss Osborndale Dewdrop 5338399, has produced 22,437 pounds of milk and 851 pounds of butterfat in 365 days, the Holstein-Friesian Association reported.

Elsewhere, the Association reported that a Registered Holstein cow in the herd of J. A. & W. D. Fairchild, Berwick, Pa., has joined a highly select group of 41 other cows of the breed to be designated 4E.

The "E" designation indicates excellence in body conformation and four shows that the cow has maintained this Excellent classification, scoring 90 points or more on four different occasions as she grew older.



For confined sows Two Purina products

Sows in confinement have nutritional needs very different from pasture fed sows. That's why Purina is introducing Purina Complete Sow Chow (CF) and Purina Sow Chow (CF).

Here are a few facts about these two Purina Sow Chows: **PURINA COMPLETE SOW CHOW (CF)** is an 18% protein complete ration designed for feeding at the 3 to 4 lb. level to each sow daily during gestation. Purina Complete Sow Chow (CF) is high in nutrients . . . but low in energy.

PURINA SOW CHOW (CF) is a 36% protein ration to be mixed 1:2 with grain during gestation and 1:5 during lactation. This ration is high in nutrients and low in energy . . . exactly as confined sows need it.

See if these products fit your operation and help your sows hold condition in confinement.

John J. Hess, II, Inc.
Ph: 442-4632
Paradise

Ira B. Landis
Ph: 394-7912
1912 Creek Hill Rd., Lanc.

**West Willow
Farmers Assn., Inc.**
Ph: 464-3431
West Willow

James High & Sons
Ph: 354-0301
Gordonville

John B. Kurtz
Ph: 354-9251
R. D. 3, Ephrata

**Wenger's Feed Mill
Inc.**
Ph: 367-1195
Rheems



Ronald L. Hershey (center) of Paradise RDI, was recently honored by Art Swarzenruber, president of the Vigortone Company, at the firm's headquarters in Cedar Rapids, Iowa. Also present was Mrs. Ronald Hershey. Hershey, a dealer for the

company won the "President's Award of Merit" for his sales achievements and personal contribution to the company. Vigortone Company is the largest manufacturer of livestock premixes.

LANCO BEDDING

FOR
POULTRY AND LIVESTOCK

- Wood Shavings — Soft and Hard Wood
- Peanut Hulls

Call for information

Phone 285-4506

John Deere Plateless Planters offer Unexcelled Accuracy

Plateless Planters give you a degree of accuracy never before possible. You can plant any variety of seed you want—sized or unsized—and get the kind of population you need for top-notch yields.

Visit us soon and we'll demonstrate how a Plateless Planter works, right in our showroom. You'll see right inside a Plateless Planter on our floor. And we've got a Credit Plan that can be tailored to your pocketbook.

Stop in today!



Wenger Implement, Inc. **A. B. C. Groff, Inc.**
The Buck 284-4141 New Holland 354-4191

Landis Bros. Inc. **Shotzberger's**
Lancaster 393-3906 Elm 665-2141

M. S. Yearsley & Sons
West Chester 696-2990

Mennonite Board Votes

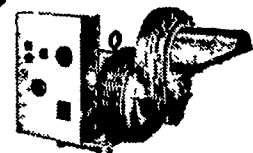
At the recent Eastern Mennonite Board of Missions and Charities annual reorganization session at the Mount Joy Mennonite Church, the following persons were elected:

Earl B. Groff, vice chairman; Norman Martin and Jacob Musser, executive committee; Arthur Miller, personnel committee; Chester Steffy, property committee; Leslie Hoover, nominating committee; Harry Graver Jr., Chester Steffy, and M. Rohrer Hershey, relief committee; Leslie Hoover, Jewish evangelism committee.

It was noted that four new members were appointed to represent districts and three new members at large were elected.

Convert It to Cash
With a Classified
Call 626-2191
or 394-3047

When Power Fails



PROTECT YOUR FARM
WITH A PINCOR PTO
TRACTOR DRIVEN ALTERNATOR

- 50,000 watts surge capacity
- 16,000 watts continuous duty
- Slow speed — 1800 RPM operation
- Cool running triple chain drive transmission
- Heavy duty motor starting
- Close voltage regulation
- Meets NEMA codes
- Heavy duty construction
- Induction hardened input shaft
- Rain proof construction
- Completely wired control box
- Three phase available

SEE IT AT . . .

Haverstick Bros.
2111 Stone Mill Rd.
Lancaster, Pa. 17603
Ph. (717) 392-5722

PINCOR