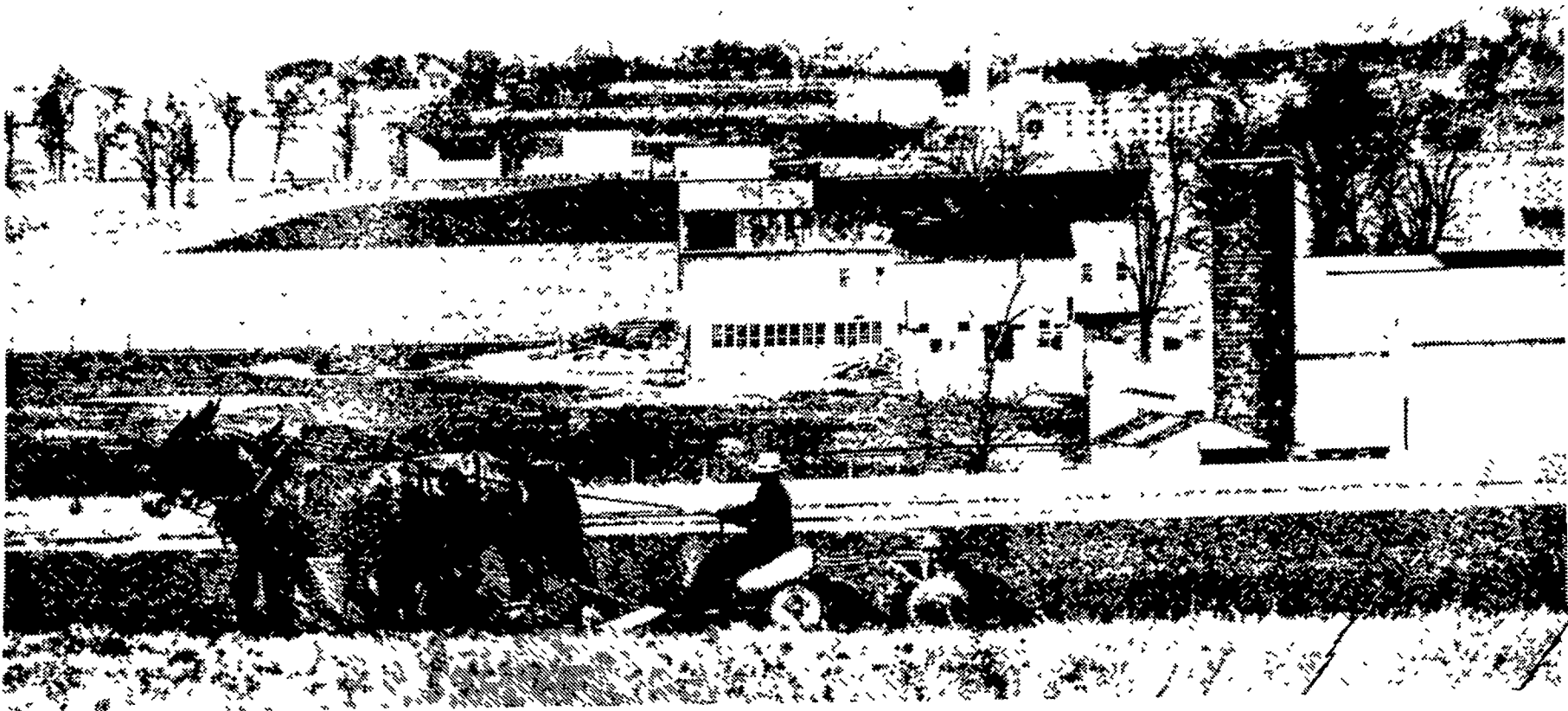


A SALUTE TO LANCASTER FARMING

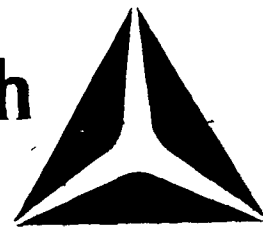


FROM TWO GREAT INSTITUTIONS SERVING
THE ENTIRE AGRICULTURAL COMMUNITY

1580 WHEX

"THE PENNSYLVANIA FARMERS STATION"

**Commonwealth
National Bank**



LANCASTER - YORK - HARRISBURG — MEMBER FDIC

The foundation stones of this — one of America's richest and most productive farm areas — are the farm organizations. Here in the Lancaster-York region, dozens of organizations flourish, serving the legendary Pennsylvania Farmer. Now, for the first time, each organization is featured 36 times a week on 1580 WHEX . . . 6 times daily, listen for "The Farm Salute" . . . another service of the Commonwealth National Bank . . . the bank with the farm community at heart.

TUNE IN 1580 WHEX TODAY!

THE RIGHT SIDE OF THE DIAL FOR

THE FARM SALUTE — DAILY COMMODITY REPORTS — DAILY LIVESTOCK REPORTS
DAILY EGG MARKET REPORT — DAILY POULTRY PRICES — DAILY HOG MARKET PRICES
DAILY GRAIN MARKET — HOURLY FARM CALENDAR — HOURLY FARM REPORTS

BROUGHT TO YOU EVERY DAY ON

1580 WHEX

"THE PENNSYLVANIA FARMERS STATION"

SERVING THE LANCASTER/YORK AREA