

**Commonwealth National  
Agri-Loan Corp.**



A subsidiary of Commonwealth National Bank

**Serving  
Agriculture  
in  
South Central Pennsylvania**

Member FDIC

**Sutan<sup>®</sup>  
+ atrazine  
lets your  
corn  
grow free**

Your corn grows free from all major grasses and weeds. Free from the growth stress that weeds cause. Free to develop strong, vigorous roots that reach down to make maximum use of soil nutrients and moisture. Free from extra cultivations, possible root damage and free of trashy fields at harvest time.

This season, use dependable, economical Sutan plus atrazine on all your corn acreage. Stop the toughest grasses and weeds—nutgrass, wild cane, foxtails, fall panicum, Johnsongrass seedlings, crabgrass, annual morningglory, lambsquarters, pigweed, ragweed, nightshade and others that lower your profits. Mix Sutan plus atrazine in the soil as you prepare your seedbed. There's no need to depend on unpredictable rainfall to move the herbicide into the weed seed zone. Sutan and atrazine will be waiting to control weeds as they sprout. Used as directed, Sutan controls weeds without leaving harmful residues in the soil. Free yourself from work and worry... see us today for your supply of Sutan.



**BROWN & REA INC.**

Dealers In Grain, Feed, Coal, Fertilizers, Etc.

ATGLEN, PA. 19310

Phone 593-5149

**Good Future for Plant  
Growth Regulators Seen**

Plant growth regulators will be the glamour products of the future, New Jersey vegetable growers were told recently.

Edward K Bender, agriculturist for American Cyanamid Company, told members of the New Jersey Vegetable Growers Association that future products will increase protein and carbohydrate content of farm crops.

Other expected advantages include drought resistance, increased yields, and more uniform maturity to reduce harvesting costs.

Speaking on "Pesticides of the Future," Bender predicted increased use of systemic pesticides, which are absorbed into the plant to provide protection without harming beneficial insects, new application techniques, and increasing acceptance of integrated control practices.

"However, conventional pesticides will continue to be your first line of defense against crop pests," Bender said. He warned that the highly-selective, non-persistent pesticides now coming into use will cost

more, because crops will have to be treated more frequently.

Insects, weeds, fungi and nematodes currently destroy more than 11 billion dollars worth of crops each year in the United States, Bender estimated, with losses during storage adding another two billion dollars to the total.

"Today, we hear much about pesticides polluting the environment, but little about their increasing the food supply or controlling mosquitos, flies and other insects responsible for spreading human disease," Bender said.

"By the time a new pesticide is approved by the regulatory agencies and offered for sale, much more is known about its properties and its effect on the environment than is known about most chemicals used today," he added.

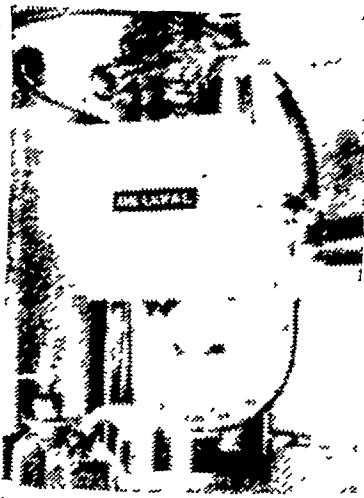
Bender urged his listeners to increase their own efforts to use pesticides properly, and to "tell the pesticide story as it really exists."

**Announcing  
DeLaval's  
Automatic Model  
200 Milker**

first milker controlled by the cow.

- Gently massages udder until removed
- Udders are soft and supple after milking
- Cow control aids operator
- Helps you get all the milk your cows can produce

Call us today or come in tomorrow



**J. B.  
Zimmerman  
& Sons**

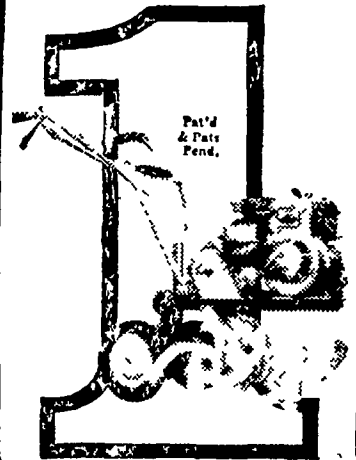
Blue Ball, Pa.

Call 354-7481

**Roaches  
Fleas - Ticks  
Rats or Mice**

**J. C. Ehrlich Co., Inc.**  
1278 Loop Rd., Lanc.  
PHONE 397-3721

**NUMBER ONE  
GARDEN HELPER!**



- ✓ DELIVERS EQUIVALENT OF 2 EXTRA HORSEPOWER
- ✓ FULL-DEPTH, FULL-WIDTH ROTOR PENETRATION
- ✓ MOST TROUBLE FREE
- ✓ COMPLETE CHOICE OF MODELS AND ATTACHMENTS- ROTORS, TRACTOR TOOLS.

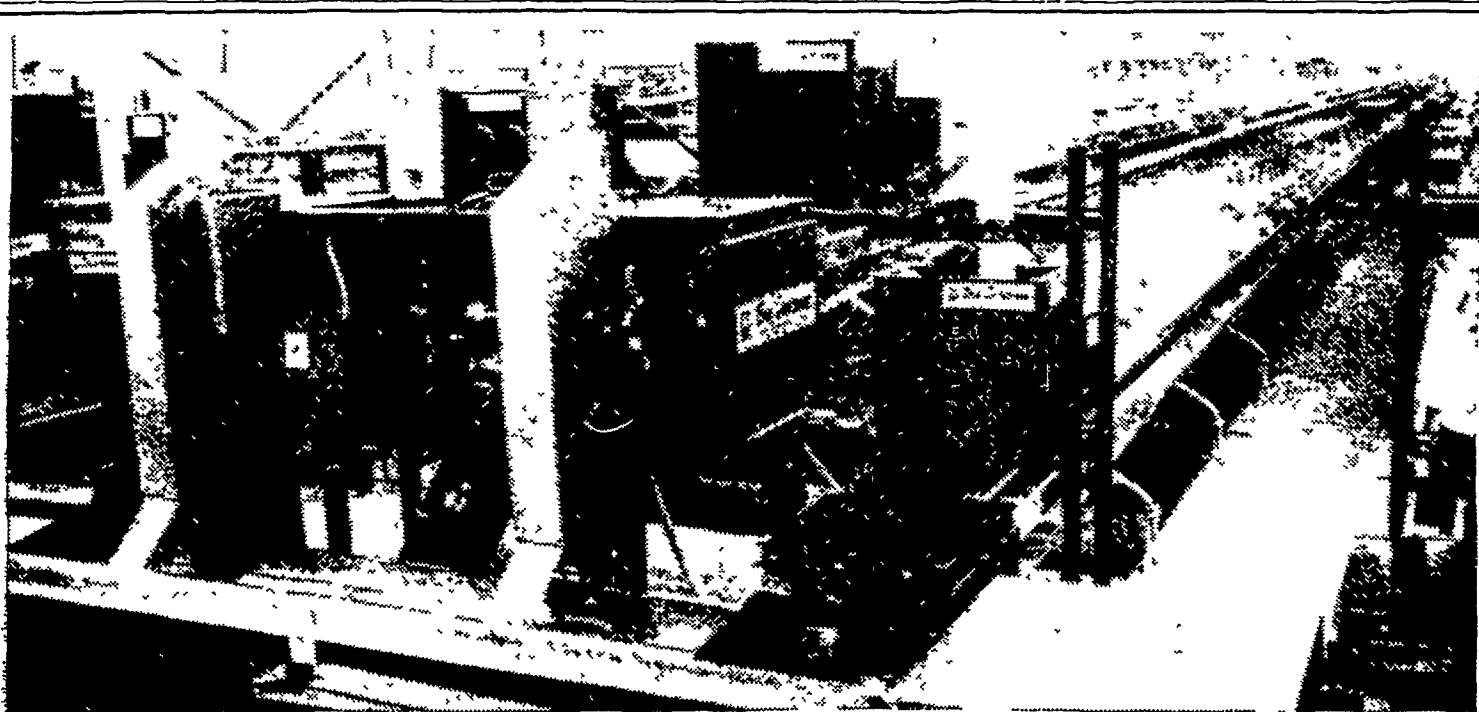
Sales and Service

**GEHMAN  
BROS.**

1 Mile North of Terre Hill  
on Route 897

East Earl, R. D. 1, Pa.

Phone 215 445-6272



**COMPLETELY AUTOMATED DOUBLE DECK CAGE SYSTEM COMBINES LATEST DESIGN FEATURES WITH PROVEN DEPENDABILITY FOR REDUCED LABOR AND INCREASED PRODUCTION.**



**BIG DUTCHMAN**

A Division of U.S. Industries, Inc.

**EASTERN BRANCH**

215 Diller Ave., New Holland, Pa. 17557

Phone 354-5168