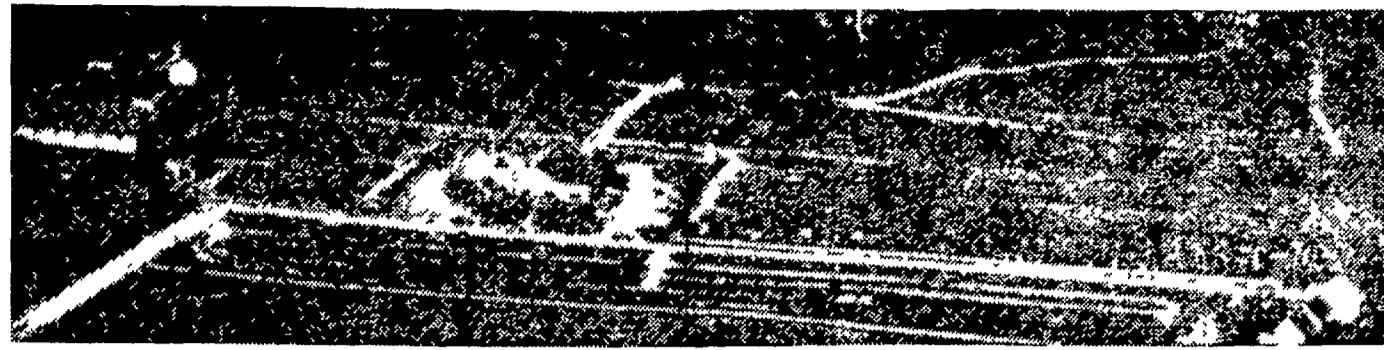


LIQUIDATION AUCTION



Location: South Race Street, Myerstown, Pennsylvania — 6 miles East of Lebanon, Pa., on State Road No. 422, which is located 20 miles West of Reading, Pa., and 30 miles East of Harrisburg, Pa. NOTE: Commercial air travel into Harrisburg, Pa. Private planes may land on asphalt air strip at County Airport in Myerstown, Pa. near the sale site. Overnight accommodations may be arranged by calling (717) 866-2138.

ME — 9:30 A.M.
IS NOW TO ATTEND —

HAYBINES — TRUCKS — AUTOMOBILES

OVER 200 TRACTORS AND 1000 PIECES OF FARM EQUIPMENT

Inventory Liquidation Auction

**NEW — NEW
ALL NEW FARM EQUIPMENT**

These items are all new and will be sold at public auction. You set the price. NOTE: These are 8 new farm tractors, 1 new lawn tractor and 3 new implement trailers listed above, 8 new hay crushers listed under hay equipment, new elevators listed below.

LOADMASTER auger front unloading forage boxes running gears; 30 FARM RITE 6 & 8 ton wagons; 20 6, 7 & 8 ft. grader blades; 10 rear mo. 3 pt. booms; CO 4, 5, & 6 ft., 3 pt. and pull type rotary mowers; IDEA 203 manure spreaders; 5 STARLINE P.T.O. spreaders; 5 DUNHAM tractor loaders; 10 EMCO post diggers; 5 EMCO 3 pt. box scrapers; 10 - J & M 165 capacity boxes (some 125 bu.); NEW IDEA P.T.O. lime lers; 4 FARM HAND wheel hay rakes; NEW HOLLAND forage blower; J.D. forage blower; FOX forage blower; WALSH steel wire 1500 bu. corn cribs; fence; barb wheel barrow; rotary tiller; automatic electric fuel oil s; portable air compressor; 5 McCULLOCH chain portable generator; 10 heat housers; platform scales; hand tools; forks; 5 new implement tires; shovels; urn brooms.

**FORAGE EQUIPMENT
FIELD CHOPPERS — 28 FORAGE BLOWERS
CHOPPER WAGONS**

C No. 16 field chopper; J.D. No. 15-A field chopper; 1 GEHL choppers; several FOX choppers; (There HARVESTERS and 15 flail type choppers.) This is the finest selections of field choppers in Pennsylvania. assorted makes and models of forage blowers. There used forage wagons in addition to the 4 new ones listed; 15 corn and hay heads for above choppers.

Register for Buyers Number when you get to the auction.

WIN - A - PRIZE
FREE — FREE — FREE
person who registers before 11:00 a.m. eligible to win a prize in a drawing held end of the sale. Win a \$139.00 portable pressor or one of 50 FREE dinners at any PIER 7 Fish & Chips Restaurant.

**100 CULTIVATORS — 31 CORN PLANTERS
4 FIELD CULTIVATORS**

2 Row — 4 Row — 6 Row — 12 Row

Nearly new ALLIS 12-row pull type no till corn planter used as a demonstrator; ALLIS 4-row no till; J.D. 494A; 494; 490; 246; INTERNATIONALS: 4-row tool bar planter; seven late style 2 and 4-row planters; OLIVER, CASE & MASSEY FERGUSON. 2 & 4 row planters; good selection of pull type or 3 pt. hitch; 4 field cultivators (one 3 pt. hitch); several late model J.D., ALLIS and MASSEY FERGUSON and IHC rear-mounted 4 and 6-row cultivators; nearly 70 assorted cultivators covering most all tractors made.

**43 DISC — 151 PLOWS — 12 HARROW DRAGS
6 CULTIMULCHERS — 25 CULTIPACKERS
5 ROTARY HOES**

J.D. 14' TWA wheel disc; several KBA wheel disc; A.C. KEWANNEE, OLIVER, (one nearly new), CASE, and MASSEY FERGUSON wheel discs 8 ft. to 14 ft., several have been rebuilt; 5 disc plows; approx. 15-3 pt. mounted disc, mostly FORD and MASSEY FERGUSON; 20 pull type tandem disc; 12 J.D. 4, 5 and 6 bottom steerable plows; 14 IHC 4, 5 and 6 bottom steerable plows; M.F. 4, 5, and 6 bottom plows; 70-3 pt. hitch plows 2, 3, 4, 5 and 6 bottoms consisting of J.D., IHC, M.F., FORD, OLIVER, and CASE; 35 pull type plows. This will be one of the largest plow selections ever sold at public auction. 2 snow plows; 2 V-plows; 9 and 10 ft. BRILLION Cultimulchers; DUNHAM 10 and 12 ft. cultimulchers; LEHR 12 ft. cultimulcher; J.D. 16 ft. spring harrow on wheels; IHC 14 ft. harrow on wheels; BRILLION 12, 14, and 16 ft. harrows on wheels; several tractor type pull spring and spike tooth drags; 25 single double roll cultipackers, they are 9, 10, 11, 12 and 13 ft., several BRILLION 12 and 13 footers like new, 50 rotary hoes of all different makes; however, most of these are J.D. pull type with interchangeable sections as large as you want, 17 rotary hoes are 3 pt. mo.

Wengers have a complete supply of over 100 mounted sub tractor attachments.

These will be auctioned before the tractors sell.

ORDER OF SALE

9:30 A.M. — Auction will start on smaller new and used items.
10:00 A.M. — Selling Farm Equipment.
1:30 P.M. — Combines and large farm Equipment
2:00 P.M. — Tractor auction will start.

**15 HAYBINES (WINDROWERS)
14 HAY CRUSHERS — 16 HAY BALERS
20 HAY RAKES — 50 HAY MOWERS**

10 and 12 ft. NEW HOLLAND, HESSTON, OWATTONA, CASE, NEW IDEA, and INTERNATIONAL windrowers, several are like new; 2 new J.D. P.T.O. hay crimpers; 6 new ALLIS hay crimpers; several good used crushers; M.F. No. 3 baler; NEW HOLLAND No. 268 and 269 balers; J.D. 14-T balers; 10 other good balers; 4 new FARM HAND wheel rakes; FERG. 3 pt. mo. rakes; pull types on rubber and steel; 50 assorted hay mowers 3 pt. mo.; NEW IDEA pull type; several late style FORD and J.D. mowers; also IHC, CASE, OLIVER, and MF hay mowers.

**2 GRAIN DRYERS — ELEVATORS
16 GRAIN DRILLS — 10 FIELD SPRAYERS
10 GRINDERS & FEED MIXERS**

J.D. No. 458 grain dryer 350 bu.; CASE 250 bu. grain dryer; 36 ft. NEW LITTLE GIANT double chain elevator; 32 ft. NEW LITTLE GIANT elevator; 6 double chain elevators 32 to 42 ft.; 2 grain augers; OLIVER No. 76 drill; J.D. 17 hole Model F.B.B. drill - 14 other drills to choose from; 4 row, 6 row and 8 row trailer type field sprayers; NEW HOLLAND, GEHL, BEAR CAT, LETZ, FARM HAND P.T.O. mixer mills; GEHL roller mill mixer; 6 auger P.T.O. feed self-unloading trailers.

**49 MANURE SPREADERS
15 LIME SPREADERS
36 TRACTOR LOADERS**

4 new STARLINE tank spreaders; NEW IDEA No. 19-203-17-Flail 12A; J.D. No. R-N and 33; NEW HOLLAND No. 475; CASE, IHC, and OLIVER tractor spreaders; 15 lime spreaders 10 and 12 ft.; 5 new DUNHAM tractor loaders, one of these 5 will fit most any tractor; 31 FORD, IHC, OLIVER, CASE, M.F., J.D., ALLIS and WAGNER loaders.

— — ATTENTION — —
Visit Wenger's used tractor and machinery parts display. Largest selection of used late model parts in the Eastern U.S.

FARM MACHINERY, INC.

RACE STREET, MYERSTOWN, PENNSYLVANIA
PHONE 717-866-2138

Terms: Full payment when machinery is moved. If desired, you pay 10% down sale day and the balance when you receive your purchases from the lot. Final removal date and due date on or before April 17, 1971. Trucking is available at the customary rate.

Breakfast lunch served by the Myerstown, Pa., Brethren Church. Some items change due to daily business.

Sale Managers - Donald Fry, Edon, Ohio Phone 419-272-4294
Full Service - Kruse Real Estate & Auctioneers, Inc.
Auction Companies - The 300 Block South Union, Auburn, Ind.
Phone 219-925-4004

Auctioneers: Don Fry, Edon, Ohio; Dean Kluse, Auburn, Indiana; Ralph Horst, Marion, Pa.; Robert Shinaberry, Hudson, Mich.; Blain Rentzel, York, Pa.; Vernon Martin, New Holland, Pa.; Clyde Wolgemuth, Manheim, Pa.; Jim Vaughn, Stilesville, Ind.; Elias Frey, Archbold, O.; and L. Robert Frame, Exton, Pa.