

# Public Sale Register

SAT MAR 13—12 Noon Public Sale of Farm Machinery and Household Goods on the premises located 1/2 mile north of Bird-In-Hand along the Beechdale Road, turn north off Route 340 at underpass on Beechdale Road, Lancaster County, Pa. Terms by Paul M. Smucker, Leroy Zook, Auctioneer

SAT. MARCH 13 — 10 A.M. Samuel Schlough and Son Annual Spring Sale of Livestock, Farm Implements and Antiques on the premises along Schlough Road between Alleghenylle and Maple Grove, Berks County, Pa. Terms by Samuel Schlough and Sons, Leid and Gundy Auctioneers.

SAT. MAR. 13 — 12.00 Public Sale of Farm Machinery located 1/2 mile south west of Millersville. Sale by J. Harold Herr. Kreider and Diller Auctioneers.

SAT. MAR 13—11 A.M. Public Sale of Farm Equipment and Household Goods located on Harristown Road, located 1 1/2 mile off Route 30, turn north at Vintage on 1 mile south of the

## Delmarva Tomato Cultural Practices For Machine Harvest

The key to successful mechanical harvesting of tomatoes on the Delmarva Peninsula lies in the adaptation of new cultural practices, according to Richard Northam of Massey, Md, who had 90 acres of tomatoes machine harvested in 1970.

Northam told those attending the 84th annual meeting of the Peninsula Horticultural Society that Delmarva tomato growers have adequate machines to harvest their crops, varieties that will hold up under mechanical harvesting, and the support of local processors. But before mechanical harvesters can prove their value, growers will have to change certain cultural practices.

Cultural practices that need changing include bed preparation, fertilization, weed control and planting, he explained

Tomato growers have traditionally used a fertilization program designed to maintain a strong, vigorous plant as long as possible. But this type of program doesn't produce more fruit, it only delays the time it takes for the fruit to mature, says Northam. A grower should put on only enough fertilizer so that the plant gets off to a good start and sets well. Then the plant should stop growing and let the fruit ripen.

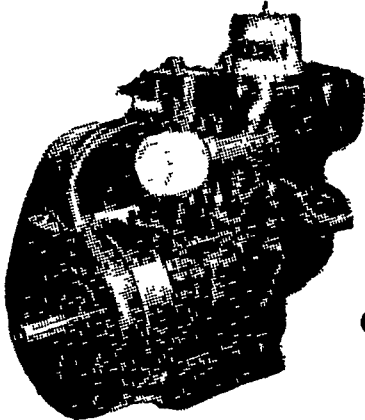
For mechanical harvesting, the bed should be level and raised three to four inches above the row following the last cultivation, points out the Maryland grower. He does not recommend using a bed shaper since the roto-tiller may change the structure of the soil and create a hard pan that prevents good plant growth.

Good weed control is also essential for efficient mechanical harvesting, says Northam. "Twenty tons of tomatoes in the field covered with weeds will result in five tons being harvested by the machine."

Finally, growers will have to plant direct-seeded tomatoes. Northam said direct seeding reduces the cost of plants and labor in addition to producing a plant that is relatively free of disease. He recommends planting no more than 10 to 15 acres of direct-seeded tomatoes per week for each machine that will be used at harvesttime.

Pequea Valley High School. Canadian Division "Colossal" Sale at Stavely, Alberta, Canada  
Terms by Elam Buckwalter Robert E. Martin and Frank Steller, Auctioneers.  
MON. MAR. 15—11 A.M. Public Sale of Farm Machinery and (Continued On Page 37)  
MON MARCH 15 — Shalco's

★ "Petter Power Pays" ★  
WORLD LEADERS IN  
DIESEL ENGINE DESIGN



1 1/2 to 45 H.P.  
Continuous Rating

MAKE US PROVE IT!

## GEHMAN BROS.

Gas and Diesel Engines Sales and Service

1 Mile North of Terre Hill on Route 897

East Earl, R D 1, Pa.

Phone 215 445-6272

We are as close as your telephone

# PUBLIC SALE

Of Farm Equipment, Market Equipment,  
Household Goods and Antiques

TO BE HELD

## SATURDAY, MARCH 20, 1971

Located along Meadow Road, next to Mastersonville Fire House, 7 miles Northwest of Manheim, Rapho Township, Lancaster County, Penna.

44 MASSEY H. TRACTOR with power st., G. ALLIS CHALMERS TRACTOR with cultivator & blade.

77 New Holland baler, 56 New Holland side rake, John Deere heavy duty dump wagon with 16' bed and sides, Massey Harris heavy duty offset disc, John Deere 415 A plow 3 pt 2-bottom trip, 32 ft Little Giant elevator, 16 ft. aluminum grain elevator, New Idea manure spreader, McKissic mixing cart, McCormick Deering traveling table hammermill, 10' cultipacker, 8' cultipacker, 3 pt spring harrow, 3 pt chisel, 8 ft roller, cornplanter, 2 way hd cylinder, platform scales, cement mixer, log chains, 20 ft endless belt, 2 wheelbarrows, pasture troughs, hog water barrels, iron troughs, forks, shovels, iron elect fence posts, wire & knobs, elect drills, oil pump, 42" barn ventilating fan, 3 pt fork lift, 7 1/2 HP motor, bulldozer fence charger, .22 rifle with scope

### SHEEP

30 Ewes with lambs — black-faced, 1 DONKEY, bridle, harness, and cart

20 Ton Corn, Alfalfa Hay, Clover Hay, Oats Straws, Baled Corn Fodder

### MARKET EQUIPMENT

Deming Irrigation Pump with 7 1/2 h.p. elect. motor, 1 1/2 h.p. pump, 3-inch aluminum irrigation pipe with sprinkler, 3-inch lightweight steel irrigation pipe, 200 gallon Myers sprayer with boom, 2-row potato planter, 1-row potato digger, 3 pt 2-row celery planter, 3 pt plastic roller, 3 pt. cultivator, 4-door refrigerator display case with compressor, 135 gallon washing tank on wheels, two 10' roller loading tracks, 235 bu crates, 275 greenhouse flats, 1 1/2" new plastic pipe (600'), wooden frame for plastic greenhouse, 30" x 30" ventilating shutters

### HOUSEHOLD ITEMS & ANTIQUES

Spool rope bed, trunks, chests, jelly cupboard, cane-seated chairs, rockers, baby bed, marble top bureau, washbowl and pitcher, butter churn, school desks, dishes

G.E. Refrigerator, oil space heater, 275 gallon oil tank, crib with mattress, playpen, high chair, heavy duty stroller, walker, child's wardrobe, chests of drawers, single bed with mattress and box spring, desk, rockers, chairs, window screens, extension table, dishes, jars, aquarium, flower plants, redwood woven outdoor shades, 12 ft wide; 4 pair green fiberglass drapes (72" long) like new, Sylvania floor model comb. radio-record player, and many other items

Sale to begin at 10 30 A.M. when terms and conditions will be made known by

ABRAM B. & THEDA SIEGRIST

Rufus Geib and J. Omar Landis, Auctioneers

Jay Faus & Robert Hess, Clerks

Lunch by Mastersonville Fire Company

Kent R. Ferrell, Jr.

Auctioneers

John H. O'Neill

# PUBLIC SALE

## Farm Machinery and Feed

The undersigned discontinuing farming will sell the following at public auction on the Swiss Dale Farm located on Hopewell Road 3 mi. southeast of Rising Sun between Barne's Corner and Cather's Corner in 6th Elec. Dist. of Cecil Co., Md. on

## FRIDAY, MARCH 19, 1971

at 11 A.M.

Signs will be posted.

### MACHINERY:

John Deere 4020 Diesel tractor late model, John Deere 2010 Diesel tractor late model, W.C. Allis Chalmers tractor, John Deere 4 bottom 16" semi-mounted plow, John Deere FBB 13 hoe drill, John Deere #9 mower, John Deere #115 wagon, John Deere #112 wagon, John Deere #300 40' elevator, Int'l. 10' disc on rubber, New Holland #269 baler w/PTO ejector like new, Brillion Cultipacker 11', Int'l. PR1 corn picker, Int'l. 4 section spring tooth harrow Int'l. hay conditioner, Hawk 200 bu. tank spreader, grain wagon, 2 hay wagons w/hyd. dumps, flat bed wagon, Int'l. 4 bar hay rake, portable air compressor, 1955 Chev. pick-up, and other farm tools and supplies.

### FEED:

Approx. 30 tons hay of which 1/2 is clover and 1/2 2nd cutting alfalfa in top condition, approx. 3000 bu. corn.

Lunch will be served.

Not responsible for accidents day of sale.

TERMS: CASH

Aberdeen Sales Co. MR. & MRS. JAMES HERR

Sale Managers

Rising Sun, Maryland

P. O. Box 371

Owners

Aberdeen, Md.

B. B. Preston, Clerk

Nancy M. Ferrell, Cashier

Kent R. Ferrell, Jr.

Auctioneers

John H. O'Neill

# Public Auction

The undersigned, discontinuing farming, will sell the following at public auction on the former Clyde Bedsaul farm located on Creswell Road, 2 mi. east of Bel Air, Md. off Md. Rt. 22, 4 mi. west of Churchville, Md. off Md. Rt. 22, in Harford County. Sale located convenient distance from U.S. Rt. 1, U.S. Rt. 40 and Interstate 95.

## SATURDAY, MARCH 20, 1971

10:30 A.M. Sharp

JD 4020 diesel tractor w/power shift, roll guard, etc., 610 hrs., JD 3020 diesel tractor w/power shift, 317 hrs., JD 2510 diesel tractor w/power shift, 873 hrs., #35 Massey Ferguson diesel tractor, #35 Massey Ferguson gas tractor, 300 Int'l. row crop tractor, AC WD 5 loader, Int'l H Farm-all tractor w/cultivators, JD #24 T baler, JD #47 loader w/snow bucket, JD 10' disc on wheels, JD #8 7' mower, JD #216 chuck wagon, J.D. 246-247 corn planter/3 point hitch, JD F 125 3 bottom 16" plow, JD F 125 4 bottom 16" plow, JD #300 elevator, JD spring tooth harrow, JD #480 hay bind, JD #33 manure spreader, Woods 110" rotary mower, New Holland #717 chopper w/corn & grass heads, New Holland #55 hay rake, 2 New Holland grain wagons, New Idea #217 spreader, 3 New Idea wagons w/5 ton tires, Ford #903 post hole digger, 3 wagons w/racks & false end gates, wagon unloader, Int'l 13 disc grain drill, New Holland saw, Woods Bros. 1 row corn picker, New Idea 130 bu. spreader, Ferguson 2 bottom 14" plow, hay elevator, grain elevator, Brillion seeder & cultipacker, 2 Int'l discs, grain wagon, 18' flat bed truck body, Ferguson cultivators, 1956 Chev. 1 1/2 ton flat bed truck, 2 feed carts, 3 Universal milkers, vacuum pump & milk line, wash vat, hot water heater, Wilson bulk milk tank and many small farm tools and supplies.

Feed: approx. 1500 bu. corn — approx. 50 tons clover & timothy hay in good condition.

MANAGER'S NOTE: This machinery is in excellent condition. On several tractors, the warranties are still in effect. If you need additional machinery or replacements, this is an exceptional opportunity to buy quality equipment.

Sale Managers:

Aberdeen Sales Co.

P. O. Box 371

Aberdeen, Md.

OWNERS:

MR. DALE VAUGHN

MR. FRED FULLER

Bel Air, Maryland

TERMS: CASH

Lunch served.

Not responsible for accidents day of sale.

B. B. Preston, Jr., Clerk

Nancy M. Ferrell, Cashier