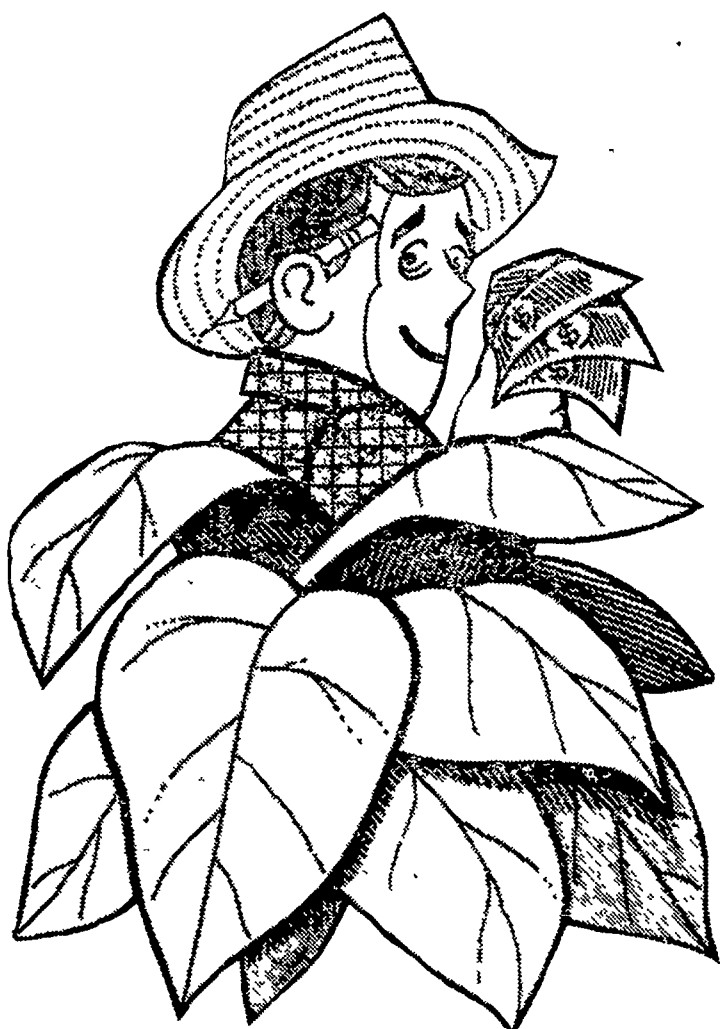


FIND IT IN THE CLASSIFIEDS



IF YOU THINK TOBACCO IS A GREAT CASH CROP, WAIT'LL YOU TRY

CASH!

Invest your cash-crop money and harvest a bundle!

9%

A NEW INVESTMENT PLAN THAT'S SAFE!

James E. Millen, Jr., well known insurance salesman, introduces a fantastic new investment plan that offers to pay you an incredible 9% return. Most banks and investment companies offer 5% or less. The plan is safe! Backed by thousands of acres of land. Get a free brochure. It tells all.

Send coupon or call now!

SEND ME A FREE BROCHURE NOW! BEFORE OFFER ENDS


James E. Millen, Jr.
Akron, Pennsylvania Telephone 859-2200

Name _____

Address _____

City _____ State _____

Telephone _____


UNITED LAND DEBENTURES INC.
P. O. Box 446 Woodstock, Vermont

Lancaster County ASCS Reports '70 Spending

The Lancaster County Agricultural Stabilization and Conservation Service reported program participation and payments of more than \$500,000 in 1970.

According to Miss Dorothy Neel, ASCS county executive director, the Lancaster County program in 1970 included

Under the 1970 wheat program, 690 farmers participated, and earned additional wheat income of \$200,491 through certificate payments on 4,905 acres of wheat and \$20,500 for diversion of 694 acres of wheat allotment.

Payments were made on 341 farms under the feed grain program. Diversion payment of \$163,661 was made for diverting 3,590 acres from corn and 248 acres from barley. Price support payment of \$30,272 was made for 1,518 acres of feed grain grown.

Seven farmers earned diversion payments of \$6,410 on 228 acres of cropland retired into permanent cover. Two of the farms received an additional \$3 per acre for permitting public access for hunting and hiking on 20 acres.

Payment of \$6,027 was made to 89 farmers for wool and unshorn lambs sold during the 1969 marketing year. Payments are made in April following the year of sale.

Eleven farmers received \$6,473 in price support loans on 3,756 bushel of wheat stored in local warehouses and one farmer received \$531 for 400 bushel of wheat stored on the farm.

Two farmers received \$3,492 in support loans for 2,816 bushel of corn stored on the farm.

Farmers received \$116,580 as cost-share payments for establishing numerous conservation practices on 322 farms. These included 3,000 feet of open drainage systems on two farms, \$720, 2,060 feet of diversion terraces on three farms, \$431.

1,415 acres of permanent grass cover on 117 farms, \$16,722, 493 acres of contour strip cropping on 17 farms, \$4,697; three acres of forest trees on one farm, \$23, 1,572 acres of improved permanent cover on 83 farms, \$16,280.

A total of 44,460 feet of tile drainage systems on 47 farms, \$13,367; 1,869 acres of cover crops on 54 farms, \$3,275; eight acres of woodland border and hedgerow management on one farm, \$200, one acre of beautification of unsightly area on one farm, \$20.

Some 89,097 feet of sod waterways on 65 farms, \$33,843, five acres of permanent cover on diversions and ditch banks on five farms, \$247; 133,836 feet of cropland terraces on 35 farms, practices

In addition, \$6,050 of the 1970 allocation was transferred to the Soil Conservation Service for technical services needed in establishing permanent type practices

**you,
your money,
and
AAtrex**



You can get a bigger return with the top weed killer in corn. Ask us how.



**BULK BLENDS
MASTER FARMER
ANHYDROUS AMMONIA**

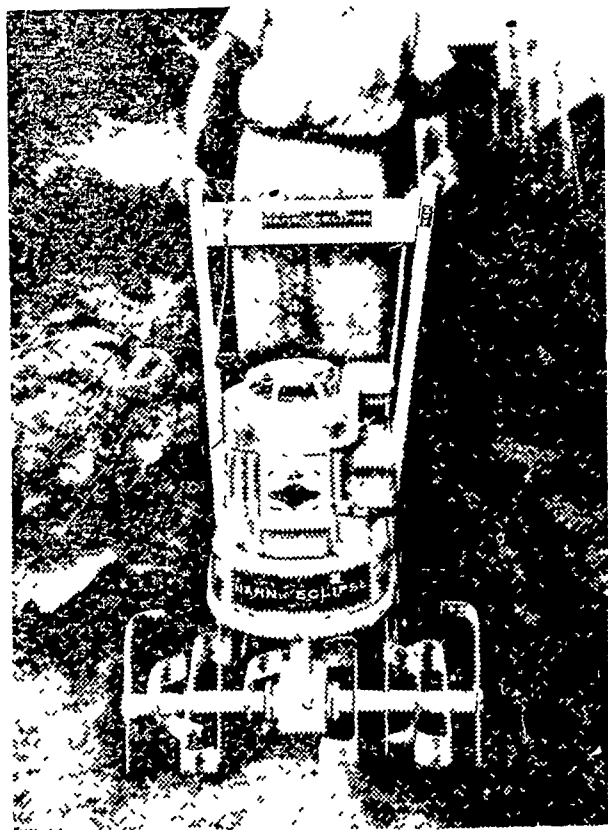
ORGANIC PLANT FOOD CO.
GROFFTOWN RD. Ph. 392-4963 or 392-0374

**Help Us
Serve You**

Is your farm organization's meetings making our farm calendar? If they're not and you think they should, let us know.

As a public service to farmers and the farm community, we try to get as many meetings as we can on the calendar. But we miss some.

Remind us by calling 394-3047 or 626-2191 or by writing to Lancaster Farming, 22 E. Main St., Lititz, Pa. 17543. You can help us serve you better.



Hahn-Eclipse
POW-R-BOY[®]
Rotary Tiller . . .

"Lift Test" it yourself



See how easily the wheels lift off the ground because 93% of weight is on the tines . . . works with you, not against you. Tills even the hardest ground. Power reverse backs out of tight spots.

Choice of 3 models.

**HALDEMAN'S
GARAGE**

Bird-in-Hand, Penna.
Phone 393-9267