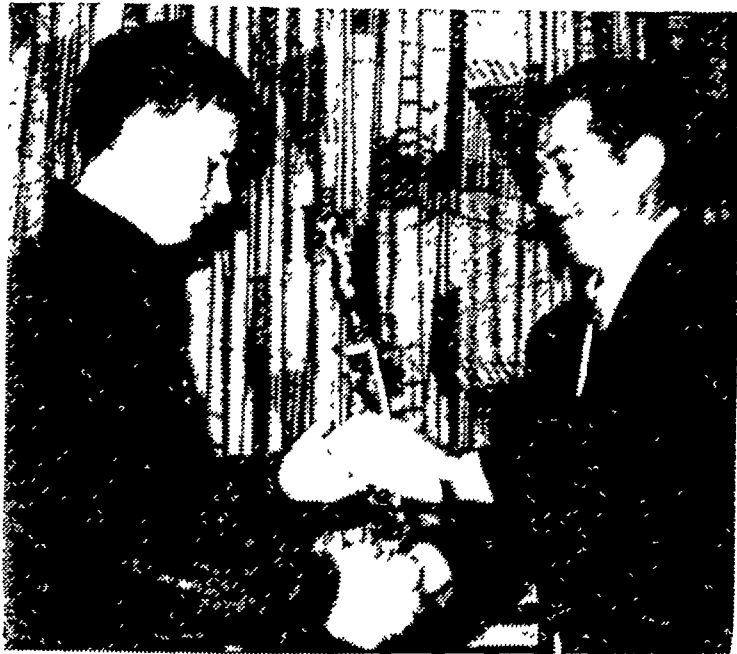


# Manheim FFA Chapter Has Nineteenth Annual Banquet



Marlin Becker, Manheim FFA Chapter member, is shown receiving a gold medal for his project record book from Henry Givler, area vocational consultant, during the chapter's annual banquet. Becker also received several other awards, including the chapter livestock production award and a vegetable seed salesman award.

The Manheim FFA Chapter presented two honorary chapter farmer awards at its Nineteenth Annual Parent and Son Banquet at Manheim Central High School last Friday.

The two are Dr. David Hollstrom, school district superintendent and Wilbur Hosler, a local auctioneer. The two received the awards for their interest, cooperation and service rendered to the chapter.

Citation awards were given to two local businesses: Shenk's Farm Services of Lititz and Stiegel News of Manheim.

The Star Greenhand award was presented to Gene Gehman, a freshman whose program consists primarily of veal calves.

The Star Chapter Farmer award was given to Donald Wenger, a sophomore whose program centers around dairying, tobacco and one beef animal.

The chapter's Star Red Rose award went to Amos Sauder, a junior whose program includes dairying, beef fattening, field corn, guinea pigs and some on-farm work experience. Sauder is chapter secretary. The Red Rose degree is the highest county award for a member of the chapter.

The Keystone Farmer Degree recipients were Dale Nolt and Wilmer Groff. These two received the awards from the state, but also got additional certificates at the banquet from PP&L presented by Jerry Shaffer.

Foundation medals consisted of the following dairy production, Gary Buchen, livestock pro-



Donald Wenger, Manheim's Star Chapter Farmer, is seated with the Chapter Sweetheart, Miss Debra Heisey. Standing, at left, is Amos Sauder, the chapter's Red Rose Farmer representative, and Gene Gehman, Star Greenhand Farmer.

**Lancaster Farming**

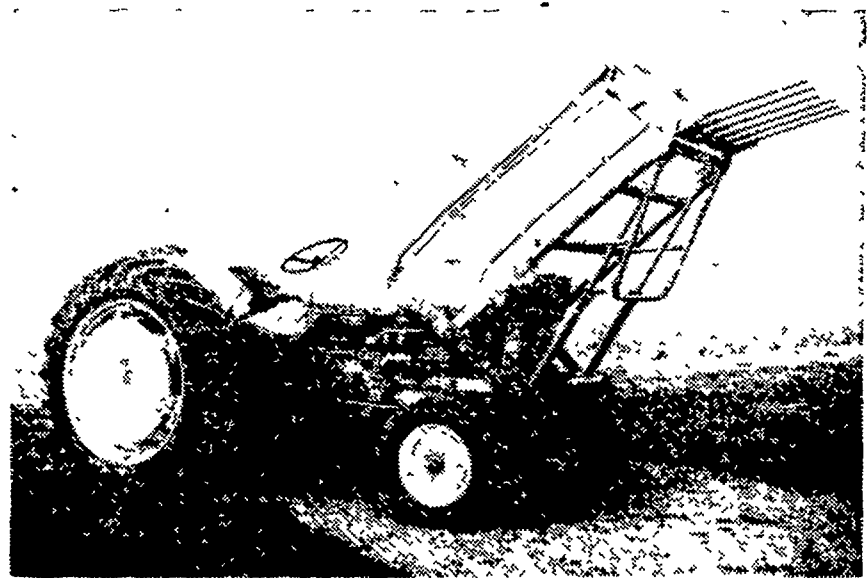
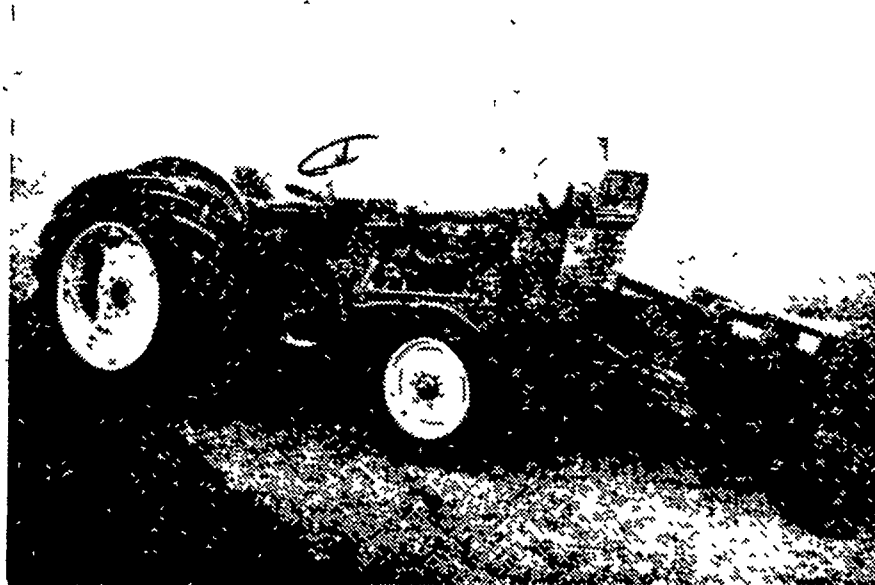
**THIRD SECTION**

(Continued on Page 30)

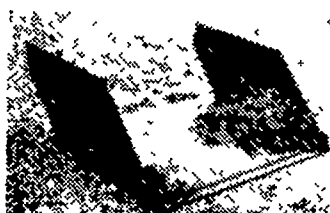
## Sauder LOADERS

"Fits" Many Makes and Models of wide Front Axle Tractors  
MODEL "D"

SERIES "F" LOADER



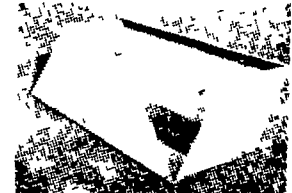
OFF OR ON IN 3 MINUTES OR LESS  
**LOADER ACCESSORIES**



40"  
Buckets  
60" or 72"



F48 (48 in. Wide)



F60 (60 in. Wide)

F72 (72 in. Wide)

Mfg. by

SEE YOUR LOCAL  
FARM EQUIP. DEALER  
TODAY

★ **Sauder Bros.** ★

325 W. MAIN STREET  
NEW HOLLAND, PENNA.  
PHONE 354-8721

FOR FURTHER INFORMATION CALL OR WRITE