

# Philadelphia Flower and Garden Show Draws Local Persons

By Mrs Charles McSparran  
Farm Feature Writer

The Philadelphia Flower and Garden Show, under the management of the Pennsylvania Horticultural Society in the Philadelphia Civic Center, attracted thousands of flower lovers from far and near this week.

Many Lancaster Countians travelled by bus loads and carloads to see the fine displays.

As one descended the escalators into the large auditorium it was like entering into a magical springtime with the spring flowering trees and shrubs all in bloom.

It was as if the colorful tulips, daffodils and hyacinths were trying to outdo the taller blooming plants.

And the mingled fragrance of sweet smelling roses, Easter lilies, lilies of the valley, carnations and gardenias permeated the whole atmosphere.

Exhibiting were nurseries,

florists, garden clubs, horticulturists, private gardens and commercial garden centers as well as commercial garden supply companies.

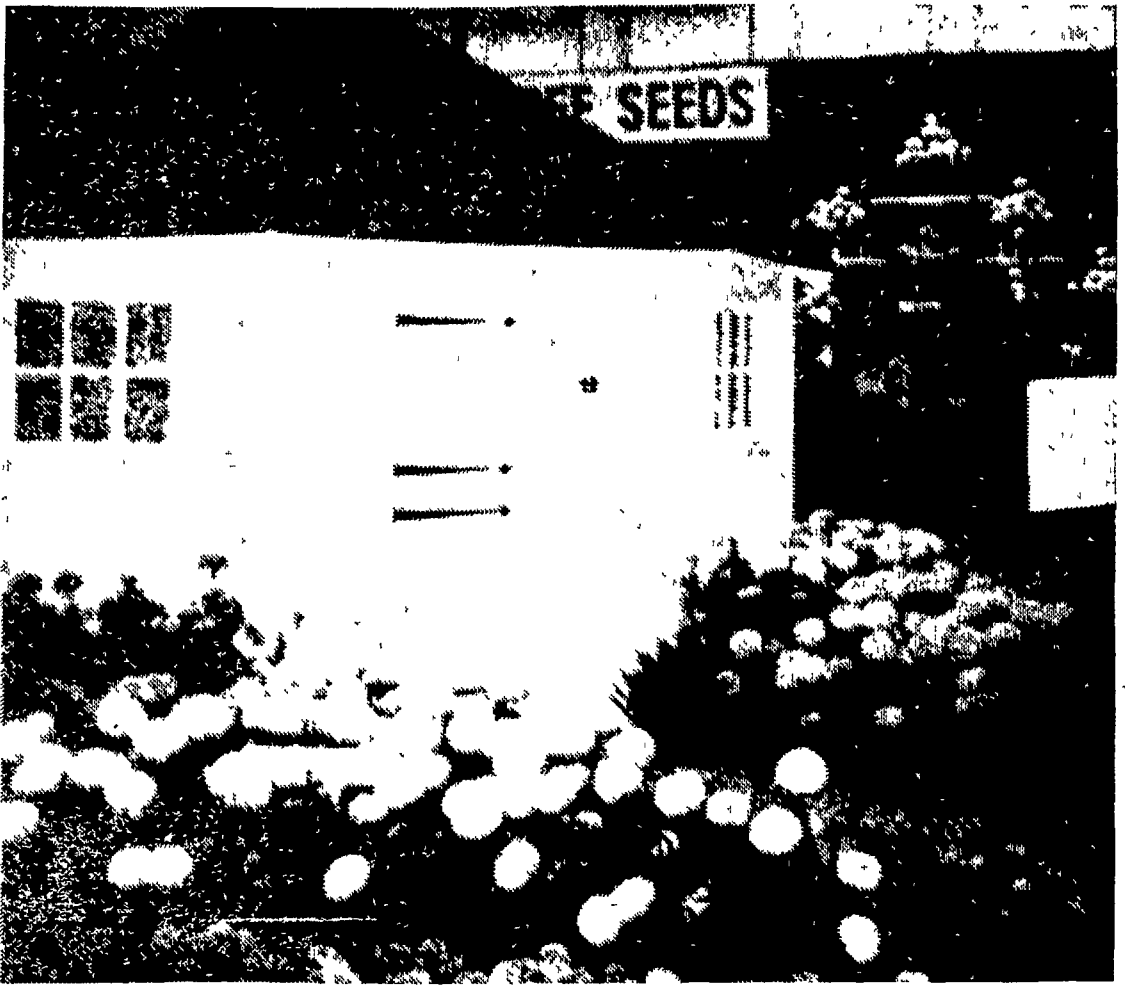
Probably the most outstanding feature of the show was the beautiful array of orchid varieties. Many were growing in tropical wooded and moist atmospheres.

Large shade trees, hanging vines, moss covered rocks, fallen tree limbs and uprooted weathered stumps and dead leaves were being watered by realistic waterfalls and lent themselves to the natural scene.

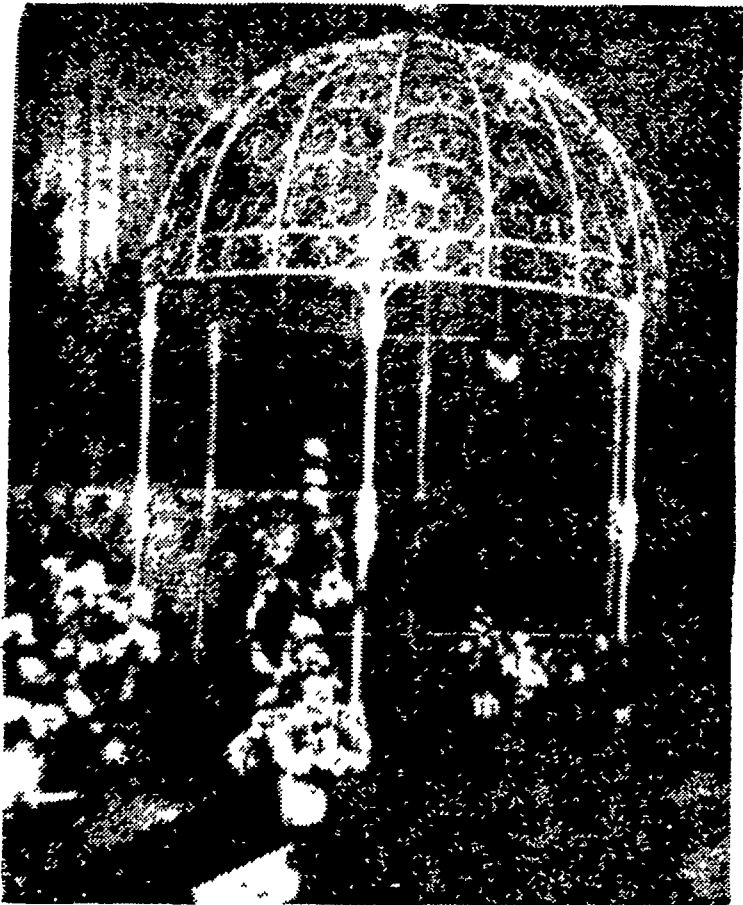
A desert scene with several varieties of cactuses and remains of the covered wagon days embedded in sand took you to the far west for a moment.

African violets of every color and description were in profusion. They could be purchased in the commercial stands as well as cut flowers, orchid corsages and dried flowers.

Some of the most colorful



Burpee's marigold garden was one of the largest and most colorful exhibits.



One of the breathtaking exhibits done by a Philadelphia florist featured many gorgeous arrangements centered with a cherub fountain under a white wrought iron cupola.



A small portion of the Southeastern Pennsylvania Orchid Society's tropical setting with a county woman, Mrs Mar-

garet Patterson, Leacock, taking in the sights.

flowers were large marigolds, roses, tuberous begonias, anemones, ranunculus, gloxinias, tulips, daffodils, azaleas, rhododendron and lilies.

There were many beautiful arrangements and houseplants.

Dried flowers were used in some arrangements and in pictures.

The Delaware Valley College, Doylestown, had a large and interesting exhibit of herbs.

Penn State University had a temporary greenhouse displaying and plans for different types of greenhouses.

Garden scenes were replete with full grown shade and flowering trees, green grass, shrubbery, flowers, stone and wooden walls, fountains and pools, bridges, quiet paths, a patio with a barbecue pit, wrought iron furniture and wooden benches.

One outstanding scene included an old weathered concrete chimney which was about 20

feet tall. It also had the 1916 wild orchids, mounted foxes and wild ducks. Sound effects of birds in the tree tops added to the atmosphere.

The farm was brought into the picture with a farm scene of a miniature red barn and a Jersey cow and calf and a white ewe and lamb fenced in with a white board fence and a colorful landscape of ranunculus.

A peacock was in one exhibit to lead his color. Bird houses and bird feeders made from coconut shells were there.

There was a vegetable garden with lush green lettuce, parsley, scallions etc growing in another exhibit.

Allied Florists gave demonstrations entitled "Introduction to Bonsai" and "Fun With Flowers." Some interesting hints for flower arranging were thrown out as well as suggestions for tools to use in the arrangements.

Some hints were to cut the stems of fresh flowers on a slant, put in a vase of warm water, remove leaves below the water line and wash containers after each use with plenty of soap and water.

A half teaspoon of unrefined or brown sugar can be added to water in the vase. Instead of aspirin as some people do, keep in a cool place especially overnight and out of sunlight in daytime as some flowers such as tulips turn toward the light and actually grow in the water.

They advised not to place cut flowers upon a television set as a certain amount of heat is generated from the set and this tends to wilt the flowers and they will not last as long.

It was stated that most of the commercial orchids used for corsages are grown in New Jersey. This excludes the little orchids grown in Hawaii.

Most of the African violets sold in this area are grown in Ettsie, northern York County, just east of route 83.

The Drumore Flower Club was one group that took a bus load to the flower show. There were 46 in the group, mostly from the southern end of the county. They have been attending for about 25 years.

This club takes at least four trips a year, one in May one

in the fall and a Christmas trip and sometimes an extra trip.

One project they are seeking to undertake if they can get state approval is to plant and care for an herb garden at the Robert Fulton birthplace.

This club was organized in 1937 and has 25 members. Mrs. Clayton Wiley, Peach Bottom, is just completing a two year term as its president.

**For Your Spring Fencing Needs**

Carload of **Wire Field Fencing**

Also Hog, Sheep & Poultry Fencing, Barb Wire, Welded Turkey Wire, Netting, Posts, Metal Gates, etc.

Buy now and get the early spring price until April 1st Extra allowance on large orders. Let us quote you on your requirements. Free delivery in the area.

**TOBACCO MUSLIN**

ALSO TOBACCO SEED

**MOTH BALLS for Insect Control**

**W. L. Zimmerman & Sons**

DEPT. STORE & HARDWARE

**BOTTLED GAS**  
Tank Truck delivery of Gulf Home-Heating Oils-Kerosene, Engine Gasoline, Gaslite Naphtha, etc.

**ENGINE & TRACTOR GASOLINE**

Open Thurs till 8, Fri till 9 and Wed till noon.

Dial (717) 768-3131  
Intercourse, Pa.