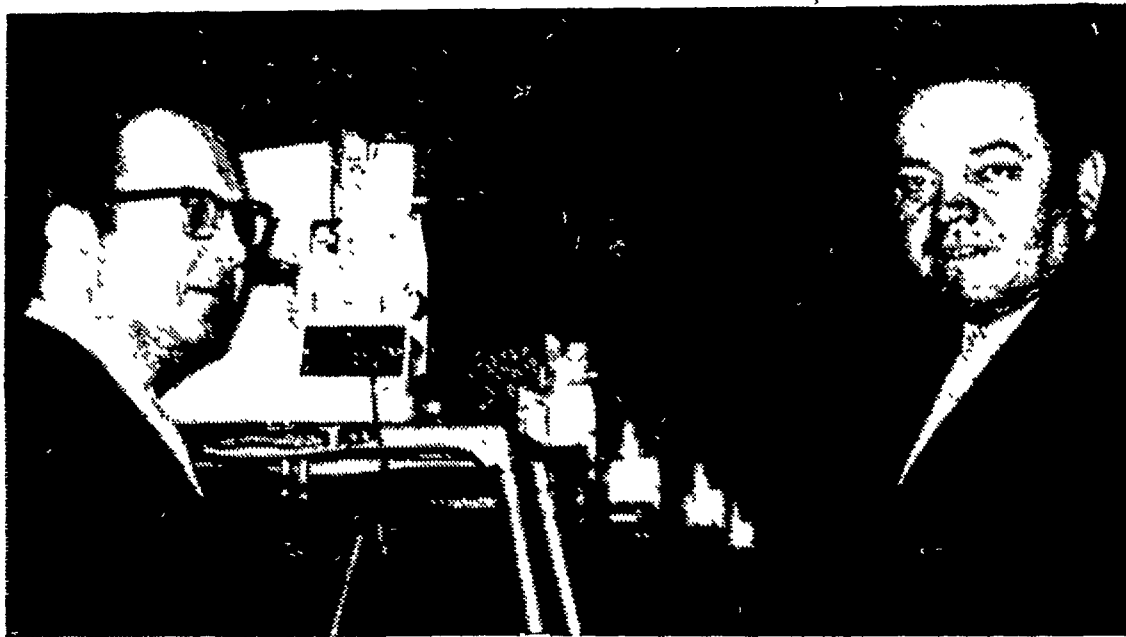


# Purina Company Shows Swine Industry Promotional Film



Dr. Richard (Dick) Hollandbeck, product sales manager for Purina Company's Eastern region, left, makes final adjustments Tuesday morning for showing local farmers a film on swine production. Using

a 30 foot screen, the show required five projectors. The projectors are shown in the background. Assisting is Warren Elfrank, Purina area director of operations for Pennsylvania.

A Purina Company meeting at Dutch Town and Country Inn Tuesday on swine production featured a highly publicized film on the swine industry.

Shown from five projectors with a synchronized picture on a single 30 foot screen, the film showed the history of the swine industry from the early settlers in this country in the 1600's to modern day swine production.

According to Dr. Richard (Dick) Hollandbeck, Purina product sales manager for swine in the eastern region, the film showed "some of the reasons you have for being proud of raising hogs."

Warren Elfrank, Purina area director of operations for Pennsylvania, said, "We think hogs represent a tremendous opportunity for this part of Pennsylvania." He noted that the cost of transporting hogs from the midwest where most of them are grown to the East costs about one dollar per hundred pounds.

The film emphasized that hogs have played a basic role in the development of the nation. Pork was a mainstay in the diet of the early colonists at a time when procuring food was a major problem in the new land.

As the settlers moved westward, they took their hogs with them as a basic part of their livelihood.

In 1871, the great Chicago fire, one of the worst fires in history, led to banning farm animals from the cities and gave farmers exclusive responsibility for animal production.

During the depression of the 1930's, according to the film, hogs gained a reputation as "mortgage lifters." Being one of the few reliable sources of income for farmers during the depression, hogs saved many farmers from bankruptcy during the time when many farmers lost everything.

The film emphasized that hogs have "saved agriculture during virtually every crisis."

The film explained that the type of hogs needed and grown has changed drastically over the years.

Almost from the beginning of U.S. history, lard was a valuable product and production of fat hogs was emphasized. This culminated with World War II, when the lard from hogs was a valuable product in the war effort.

But after World War II consumers didn't want fat so the swine industry began a major effort to change the type of hogs.

Finally in 1964-65, a severe price drop in the swine market resulted in a sell-off of most of the least desirable animals. The film described this as a major breakthrough for the industry and the beginning of the production of the modern meaty

type hog in quantity. The consumer began to like pork again, according to the film. As a result, hog production has sprung up in areas where tobacco, cotton, and wheat have been on the decline.

The film noted that along with the trend toward the meaty type animals there has been a trend toward paying the producer on a grade and yield basis. Some producers also are getting a premium for

producing to meet the schedules of packers. The housewife was also re-ported responding to the "new pork" by buying larger quantities of pork which is increasingly more digestible and nutritious.

## Public Auction

NEW & USED FARM & INDUSTRIAL EQUIPMENT

FRIDAY, MARCH 19, 1971

10 A. M.

Located — 4 miles north of York, Pa. on Route 181 or 20 miles south of Harrisburg from Interstate 83 — Exits 10 or 11.

### 40 TRACTORS

Ford, John Deere, International, Allis Chalmers, Massey Ferguson, Oliver, several crawlers & trucks.

### EQUIPMENT

Plows, disk harrows, post hole diggers, mowers, elevators, wagons, combines, cornpickers, flail choppers, spreaders, & all kinds of farm & industrial equipment.

Farmers & Dealers:

We sell anything on commission — Bring your surplus equipment in for this sale.

Terms: Cash or good check

York County Farm & Industrial Equipment Co. Inc.

Box 222, Emigsville, Pa.

Phone: 717-764-6412 or 764-5115

COMPLETE AUCTION SERVICE

COMMONWEALTH OF PENNSYLVANIA  
Department of Property and Supplies

## Surplus Farm Equipment Dispersal

Located at Bellefonte, Penna., Rockview Correctional Institution. You must enter Farm Grounds off Route 26 ONLY between Bellefonte and State College, Penna.

**SATURDAY, MARCH 27th, 1971**  
at 10:00 A.M.

Equipment may be inspected Mondays through Fridays between the hours of 8:30 A.M. and 3:30 P.M. All persons must register at Farm Office.

All equipment sold AS IS. All equipment must be removed within 10 days. All equipment must be settled for the Day of Sale and checks made payable to Ronald D. West.

### EQUIPMENT

- |                                  |                                    |
|----------------------------------|------------------------------------|
| 3—504 Int. Tractors              | Tractor Plows of all kinds & sizes |
| 720 J.D. Tractor                 | Fertilizer Spreaders               |
| 3—350 Int. Tractors              | Harrows                            |
| 340 Int. Tractor                 | Cultipackers                       |
| 4—300 Int. Tractors (1 w/loader) | Cultivators                        |
| 2—M. Int. Tractors               | Mowers of all kinds                |
| 2—H. Int. Tractors               | Flail Chopper                      |
| 2—430 J.D. Tractors              | Crimpers                           |
| 5 Hay Balers                     | Side Rakes                         |
| Model 36 Chopper (3 Heads)       | Potato Diggers & Planters          |
| Hay Conditioners                 | Corn Planters                      |
| Irrigation Pump                  | Tractor Drills                     |
| w/Industrial Engine              | Garden Tractor                     |
| John Beam Sprayer                | Large Quantity of Tires            |
|                                  | Poultry Equipment                  |

MANY, MANY PIECES OF EQUIPMENT & ARTICLES NOT MENTIONED

**BEFORE PURCHASING:** All persons must register and obtain a number at the Auction Office the day of the Sale. All Sales are Final.

Be here Saturday, March 27th at 10:00 A.M. Everything must be sold. For a complete listing contact the Sale Manager.

LUNCH AVAILABLE DAY OF SALE — PLEASANT GAP FIRE CO.

COMMONWEALTH OF PENNSYLVANIA  
DEPT. OF PROPERTY AND SUPPLIES — Owners

RONALD D. WEST, SALE MANAGER  
R.D. #1, MANSFIELD, PENNA. 16933  
PHONE: 717-724-1989  
ROBERT M. SHAYLOR, AUCTIONEER  
ROBERT SLINGERLAND, CLERK

## YEAR-END INVENTORY SALE

SNAVELY SILO SALES, INC.

MARCH 15th THRU MARCH 24th  
9 A.M. to 4 P.M.

### All New Merchandise

- 2 — Continuous-Flow 250 bu. capacity Grain Dryers
- 4 — 4" and 6" Wyatt Grain Augers — various lengths
- Under Bin Unloading Equipment and Perforated Floors
- Bin Sweeps, Aeration Ducts, and Aeration Fans
- Fans and Heaters — various sizes for in-bin drying
- 2 — Automatic High Moisture Roller Mills
- 1 — F.M. #240 Wyatt Automation Mill
- 1 — Wyatt Grain Cleaner with #10 Corn Screen
- 2 — F10 Automatic Dump Scales
- 6 — Snavely-Built Complete Barn Cleaner Units and Chain
- Hudson and Jamesway Water Bowls, Stanchions, etc.
- 2 — Smith 55-head Waterers with Heating Elements
- 30 — New G.E. Electric Motors — ½ to 5 H.P., Single Phase
- 5 — Used Electric Motors — ½; (2) 2, and (2) 5 H.P.
- 2 — New Jamesway Volumatic Silo Unloaders for 18' & 20' silos
- 5 — Jamesway Automatic Wall Shutters
- 300 — lineal feet Jamesway Galv. Cables for Barn Cleaners
- 2 — B.F. 10-ton Bulk Feed Tanks complete
- Large Variety V-Belts (Gates)
- Large Assortment Black Silo Rods, Lugs and Nuts
- Assortment of Galv. Silo Rods, Lugs and Nuts
- 1 — 20 ft. dia. Railoc Aluminized Dome Silo Roof
- 20 — 20 ft. dia. Plastic Silo Caps
- 2 — C&L Dutch Door Grain Bins, 4,000 bushel, 21' x 17½'
- (All bins can be equipped with heaters & dryers)
- 1 — C&L 21' dia. x 21' high, 5,000 bu. Grain Bin
- 1 — C&L 21' dia. x 7'6" high Stub Bin for batch driving
- 1 — Used 4,000 bu. Grain Bin 19' x 20' with Roof

Many items of equipment, grain drying fans, heaters, silo parts and accessories.

All items for immediate pick-up or delivery. We can arrange delivery.

Terms — Cash at warehouse or on delivery.

Any item we sell that is not in inventory can be purchased at sale price during sale with a 25% deposit. Balance due at pick-up or on delivery within 60 days.

**SNAVELY SILO SALES, Inc.**

Elmwood Ave.

Landisville, Penna.

717-898-2121