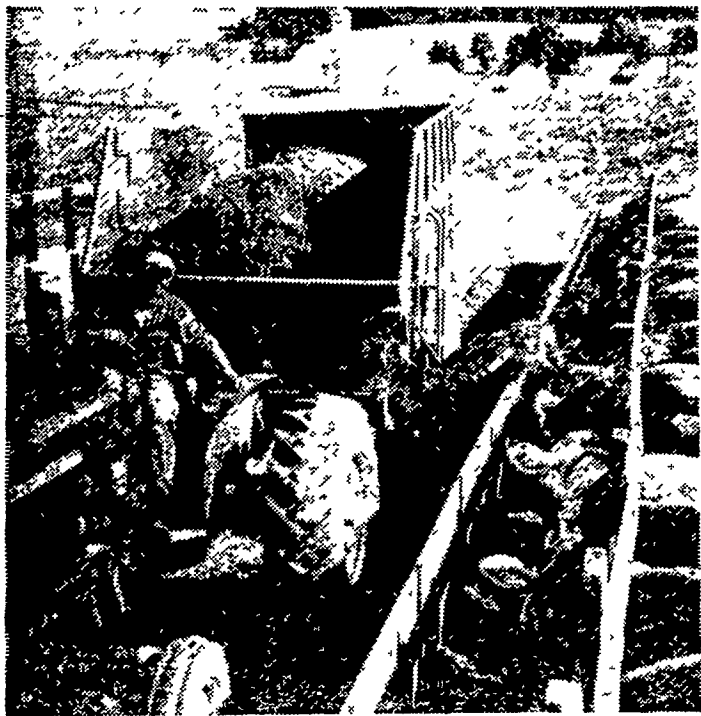


MODERNIZE or EXPAND your FARMING OPERATION NOW!



John Deere has the equipment — and the economical financing plan

Save your cash reserves for emergencies by financing equipment purchases with the John Deere Credit Plan. Equity in paid-for equipment of any make, and in John Deere Equipment you're financing, can be all or part of your down payment. Payments, interest, and finance charges are waived until use season begins—terms up to three or four crop harvests. Stop in and see us today for full details.



Shotzberger's
Lancaster 665-2141

M. S. Yearsley & Sons
West Chester 696-2990

Landis Bros. Inc.
Lancaster 393-3906

Wenger Implement, Inc.
The Buck 284-4141

A. B. C. Groff, Inc.
New Holland 354-4191

Farm Women Societies

Society 5

Society of Farm Women 5 met Saturday at Willow Valley Restaurant. Mrs. Ruth Martin was the hostess. Devotions were given by the hostess.

Mrs. Hiram Graybill, president, was in charge of the business meeting. Reports were given on the State Convention held in Harrisburg by the delegates Mrs. Wilbur Hostetter, Mrs. Samuel Graybill.

Resolutions were read. Societies 4 and 5 will entertain guests at Conestoga View on February 18. Speaker for the afternoon was Miss Kathryn Eichelberger. She spoke of her trip to Hawaii and showed slides.

The next meeting will be held February 27. Mrs. Isiah McFarland will be the hostess.

Society 23

Fourteen members of Farm Women Society 23 met in the home of Mrs. Ben Shenk, Washington Boro RD1, to sew cancer pads, while Mrs. Robert Rohrer, president, conducted a business session.

She also read the resolutions adopted by the 52nd annual convention of farm women of Pa. concerning outdoor movies, welfare, campus disturbances, drugs, litter and pollution.

She encouraged all members to write a note to local representatives to the Pennsylvania legislature endorsing these resolutions. Mrs. Paul Funk was in

charge of the devotional portion of the meeting.

Plans were finalized for a Husband's Banquet to be held February 20 in the Brownstown Restaurant. Mrs. Jay Charles is in charge of reservations.

Plans were also completed for a bus excursion to the Governor's Mansion and Hershey Medical Center February 23. Mrs. Paul Keagy, special activities, is in charge.

Mrs. Edgar Funk, ways and means, reminded the ladies of the Breneman Farm sales to be held at Washington Boro RD1, March 10 and March 20 when the group will be in charge of the refreshment stands. She also announced that a food sale will be held in the Two Guys Store, Lincoln Plaza on April 17.

Mrs. Paul Keagy served as auctioneer at a sale of food items at the conclusion of the January meeting.

Society 26

Members of Farm Women Society 26 voted a donation to the Teen Challenge program during a meeting held January 28 at the home of Mrs. Robert Summy, Manheim RD1.

Mrs. Summy, new president of the group, conducted the business session during which Mrs. Harry Hershey, newly elected vice-president, was installed.

Mrs. Richard Kreider and Mrs. Josie Buckwalter gave state convention reports during the meeting. By-laws of the society were read by Mrs. Summy.

Mrs. Amos Landis presented two readings. Devotions were in charge of Mrs. Gordon Landis. Co-hostesses were Mrs. David Landis and Mrs. John Brubaker.

Members will celebrate the group's fifth anniversary with a sweetheart banquet at Evans Restaurant, Manheim, as part of the February meeting.

Husbands of the members will be guests during the banquet.

Farm Women Calendar

Saturday, February 6

1:30 p.m.—Farm Women Society 10, meeting at Holiday Inn

2 p.m.—Farm Women Society 6, home of Mrs. Ray Hixson, 401 Snyder, Elizabethtown.

6:15 p.m.—Farm Women Society 1, entertain husbands, Meadow Hills Dining House.

Tuesday, February 9

1 p.m.—Farm Women Society 22, home of Mrs. Jay Landis, Lancaster RD6

Wednesday, February 10

Farm Women Society 3, make Cander Pads and Pressure Pillows, home of Mrs. Jay Miller

Thursday, February 11

Farm Women Societies 5 and 6, entertain guests at Conestoga View

Saturday, February 13

1:30 p.m.—Farm Women Society 25, home of Mrs. Wade Groff, Lancaster RD6

Farm Women Society 13, home of Mrs. Isaac Roser, 403 E. Clay Street, Lancaster.

Speakers will be the Rev. and Mrs. Earl Ziegler, Quarryville.

Society 28

Members of Society of Farm Women 28 will hold a Spring fashion show during their next meeting to be held February 25 at 7:30 p.m. at the Witmer Fire Hall.

Fashions for the event will be supplied by Dee E. Gee Ladies Apparel Shop, Strasburg. Each member is asked to invite a friend to the showing.

Details of the show were announced during a recent meeting held at the home of Mrs. George Eckman, Meadow Ln., Smoketown. Co-hostess for the meeting was Mrs. Robert Hess. Mrs. Harold Rohrer was in charge of devotions.

Delegates to the state farm women convention held in Harrisburg gave convention reports during the business portion of the meeting conducted by Mrs. William Dean Jr., president of the group.

Those who served as convention delegates were Mrs. William Harnish, Mrs. Harold Rohrer and Mrs. Jacob Bare.

Command Performance

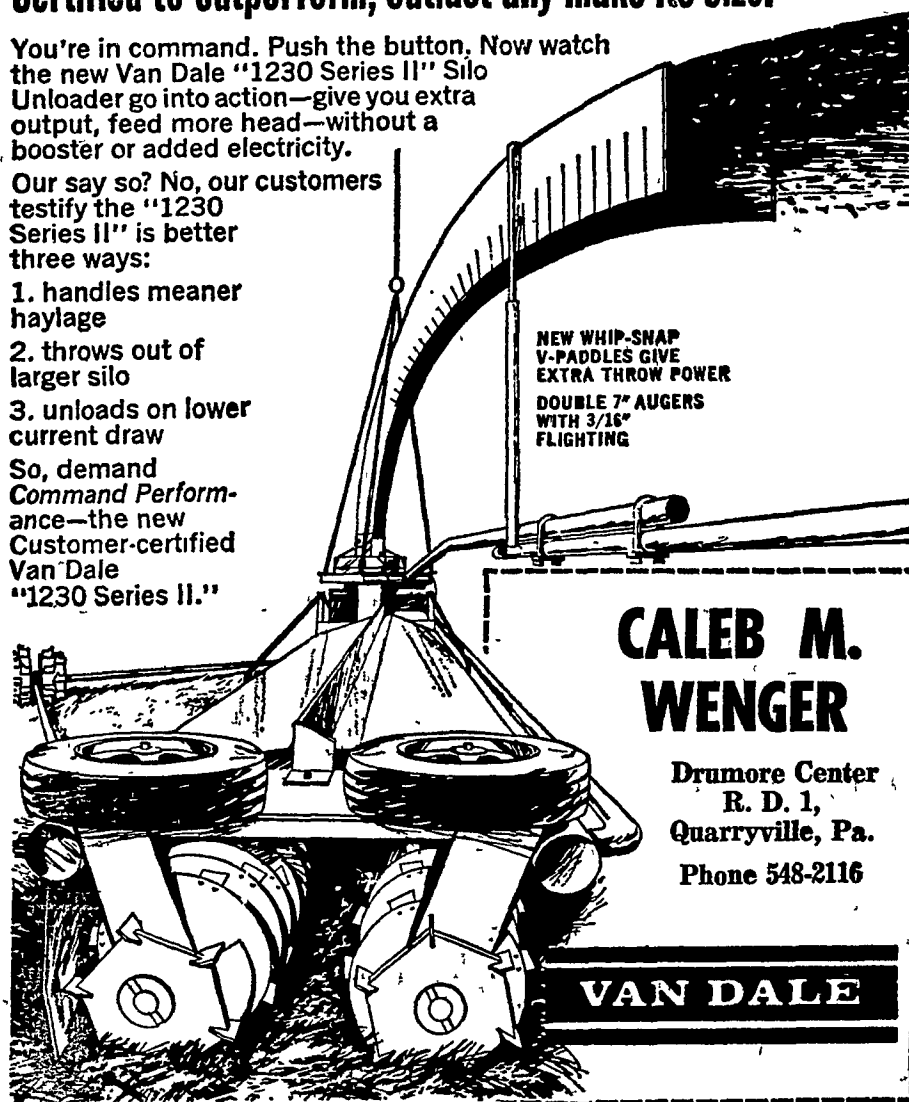
New Van Dale "1230 Series II" Silo Unloader Customer-Certified to outperform, outlast any make its size.

You're in command. Push the button. Now watch the new Van Dale "1230 Series II" Silo Unloader go into action—give you extra output, feed more head—without a booster or added electricity.

Our say so? No, our customers testify the "1230 Series II" is better three ways:

1. handles meaner haylage
2. throws out of larger silo
3. unloads on lower current draw

So, demand Command Performance—the new Customer-certified Van Dale "1230 Series II."



CALEB M. WENGER

Drumore Center
R. D. 1,
Quarryville, Pa.
Phone 548-2116

VAN DALE

No Other Protein Need When You Feed

SPECIAL TANVILAC

Feeders Say . . .

"The Most Economical Feeding Plan of All"

USE ONLY 1/3 LB. SPECIAL TANVILAC PER HEAD PER DAY WITH GRAIN AND ROUGHAGE — GET BIGGER PROFITS

FOR MORE PROFITS—MAIL COUPON
THE TANVILAC COMPANY, INC.
6th & Corning Aves., Box 96, Highland Park Station, Des Moines 13, Iowa
• Please Send Me Additional Information about Special Tanvilac

I have _____ Cattle
_____ MF
ADDRESS _____



C. O. NOLT

LOCAL DISTRIBUTOR

BIRD-IN-HAND

Phone Lanc. 397-0751