

# Masonic Homes Has Best Ayrshire Bull at Farm Show

Masonic Homes Farm, Elizabethtown, completed a good day in the Ayrshire show at the Farm Show Monday by showing the champion bull.

Named Mileway Peter, the champion animal was entered in the yearling bull class, where it took first before going on to the championship.

The animal was sired by Oak Ridge Lightning and the dam was The Hedges Preferred Ruby.

Masonic Homes Farm placed high in many of the Ayrshire classes, taking first in the Heifer Two Years and Under Three class in the open class compe-

tition. Masonic Homes had a first in the same category in the junior division.

The reserve champion bull was exhibited by Kennard E. Henley Jr., Cochranville.

Samuel J. Diehl of Bedford County took most of the top honors in the cow competition.

A rundown of other placings by local showmen in the Ayrshire open class competition is as follows:

Heifer Calf Four Months and Under One Year — Masonic Homes Farm, sixth, and Joyce A. Walmer, Elizabethtown, eighth.

Junior Yearling Heifer — Perry Long, Masonic Homes Farm, fourth.

Senior Yearling Heifer — Masonic Homes Farm, second.

County Group of Five — Chester County, first, and Lancaster County, second.

Junior Yearling Heifer One Year and Under 18 Months — Perry Long, Elizabethtown, eighth.

Senior Yearling Heifer 18 Months and Under Two Years (never freshened) — Stephen Horton, Elizabethtown, fifth.

Junior Get of Sire—Masonic Homes Farm, fourth.

Dry Cow Five Years or Over — Masonic Homes Farm, fifth.

Heifer Two Years and Under Three—Masonic Homes Farm, first, and David E. Wilson, Elizabethtown, fourth.

Cow Three Years and Under Four — Masonic Homes Farm, second; Masonic Homes Farm, sixth, and Russell Wilson, Elizabethtown, eighth.

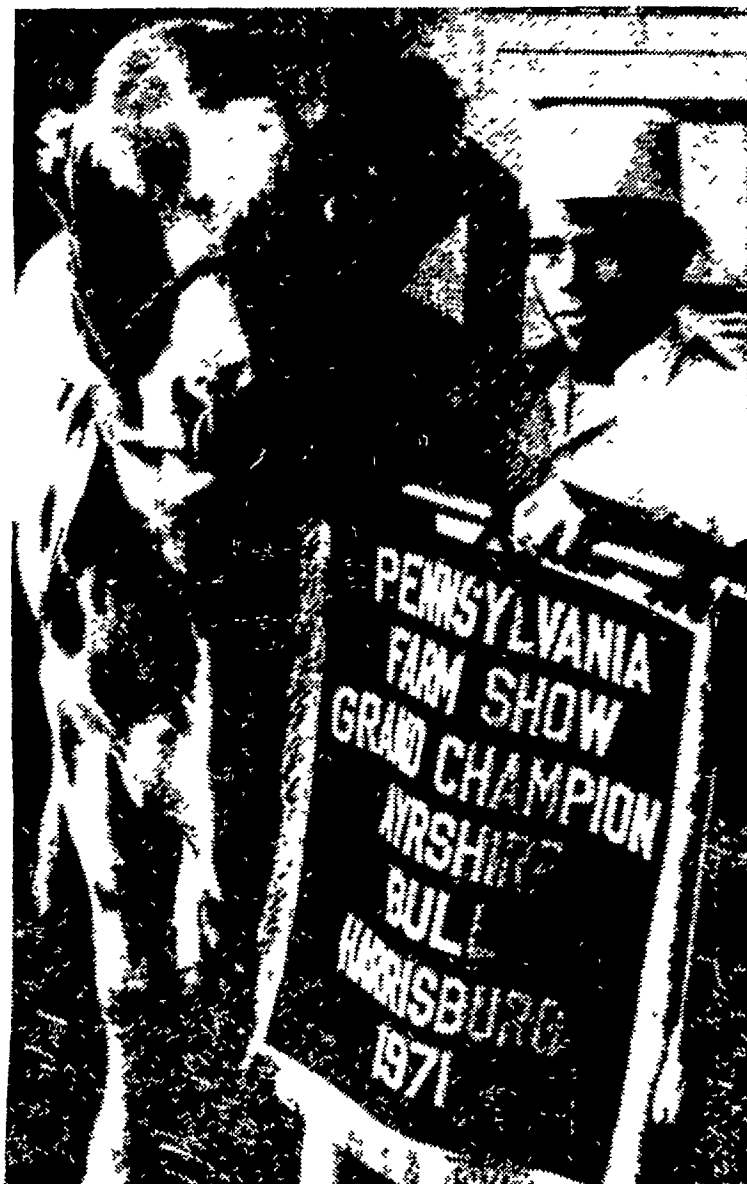
Open Get of Sire—Masonic Homes Farm, fifth, and David Wilson, of Masonic Homes Farm, seventh.

Dairy Herd—Masonic Homes Farm, third.

Besides the Masonic Homes Farm first in Cows Two and Under Three, placings in the Ayrshire junior division are

Sharon Lonne Henley, Cochranville, reserve champion with a Dry Cow Three or Four Years Old class winner. A member of the Major 4-H Dairy Club, she also had reserve champion last year.

Heifer Calf—Robin Westcott, Elizabethtown, second, and Masonic Homes Farm, fourth.



David E. Wilson, 13, son of Mr. and Mrs. Charles Wilson, Elizabethtown, with the championship bull, the first for Masonic Homes since 1967. L. F. Photo

## Some Vegetable Placings

Lancaster County exhibitors took many firsts and other top spots in the numerous vegetable classes at the Farm Show this year.

The winners by class and placings from Lancaster County are as follows: Beet (globe)—D. A. Brubaker, Ephrata RD1, fourth; Beets (half long)—D. B. Brubaker, Ephrata RD1, first, and D. A. Brubaker, Ephrata RD1, second; Beets (long)—D. B. Brubaker, Ephrata RD1, first, D. A. Brubaker, Ephrata RD1, second.

Onions (global)—D. B. Brubaker, first; Onions (Spanish type)—Masonic Home, Elizabethtown, first, and James J. Shank, Mount Joy, second. Parsnips—D. A. Brubaker, first, and D. B. Brubaker, second.

Winter Radishes (white)—D. A. Brubaker, first, and D. B. Brubaker, second. Winter Radishes (black)—D. A. Brubaker, third.

Cabbage (Danish)—Masonic

Home, Elizabethtown, first, James J. Shank, Mount Joy, second, and Glenn Griffith, Ephrata RD2, third. Cabbage (flat type)—Masonic Home, first, and D. A. Brubaker, second.

Pumpkins (small sugar or pie type)—D. A. Brubaker, second, and Glenn Griffith, Ephrata RD2, fourth. Pumpkins (neck)—Masonic Home, first, James J. Shank, Mount Joy, second; D. A. Brubaker, third, and D. B. Brubaker, fourth.

Pumpkins (Connecticut field type)—Masonic Home, second, and D. A. Brubaker, fourth.

Squash (Buttercup type)—D. B. Brubaker, first, and D. A. Brubaker, second. Squash (Cocozelle-Zucchini type)—D. B. Brubaker, second. Squash (Turks Turban)—D. A. Brubaker, first, and D. B. Brubaker, second.

Sweet Potatoes (Jersey type)—Masonic Home, first, and James J. Shank, Mount Joy, second.

# Area Cattle Win Open Class Events

(Continued from Page 8)

ers — Walter S. Laird, Dover RD3, first; Gary Dean, Strasburg RD1, second.

Junior Bull Calves — Twin Oaks Farm, Quarryville RD2, first; Pleasant Valley Farms, Lebanon RD4, second and third; Octoraro Farm, Nottingham RD2, fourth; Stonaire Farm, Lewisberry RD1, fifth.

Late Junior Yearling Bulls — Pleasant Valley Farms, Lebanon RD4, first.

Summer Senior Yearling Bulls — Soleil Farms Inc., Downingtown RD1, first.

Three Bulls Owned by the Exhibitor — Pleasant Valley Farms, Lebanon RD4, first.

Two Bulls Bred and Owned by Exhibitor — Pleasant Valley Farms, Lebanon RD4.

Junior Get of Sire — Twin Oaks Farm, Quarryville RD2, first; Pleasant Valley Farms, Lebanon RD4, second.

For David John Wylie, Nottingham RD2, it was the second

straight year he has exhibited the grand champion female Angus. His winning entry this year, also judged junior champion, is a late junior yearling, Octoraro Esterine So27.

Young Wylie is the son of Mr. and Mrs. Sam Wylie.

Besides the reserve grand champion bull, Twin Oaks Farm, Quarryville RD2, owned by Fred Frey Jr., also had a reserve champion heifer calf, four class firsts and a fourth. The bull was a junior bull calf sired

by "Colossals Image," an outstanding bull which has swept most of the shows in the East this year. Frey said "Image" was in Denver, Colo., for the International Livestock Show, which was also held this week.

Officials said the competition for the top spots in both the Hereford and Angus divisions was much stronger than usual this year.

Judges Edward R. Brown, Charleston, W. V., and Dr. Gary L. Minish, Blacksburg, Va., agreed that top animals in both the Hereford and Angus lines could compete anywhere in the nation.

Brown said of the Herefords: "These are the best horned Herefords I've ever seen at the Farm Show."



This is the Reserve Grand Champion Angus Bull, shown by owner Fred Frey Jr., Twin Oaks Farm, Quarryville RD2,

shortly after the animal took the title in open class competition at the Farm Show this week. L. F. Photo

## State Wheat Acreage Reported Drop Again

Pennsylvania farmers have sown winter wheat on only 295,000 acres this fall, the state's smallest wheat acreage on record, according to the State Crop Reporting Service.

The wheat acreage, for production of the 1971 crop, is down five per cent from last year. Based on current conditions, production is forecast at 9,145,000 bushels, seven per cent smaller than the 1970 crop.

Wheat acreage in Pennsylvania has been declining steadily since the mid-30s when more than a million acres annually were used for production of the grain.

One of the major factors behind the decline, according to the State Agriculture Department, is the unfavorable economics of wheat production compared to that of corn and other grains.

In 1969 and 1970, for example, farmers were paid an average of \$1.37 and \$1.48 per bushel for corn. The average price of

wheat in those years was \$1.27 and \$1.40 per bushel.

But they harvested more than twice as much corn than wheat from an acre of ground. In 1969, wheat yielded 35.5 bushels, while corn produced 84 bushels per acre. In 1970, the wheat yield was 33 bushels per acre compared to 85 bushels of corn.

From a dollar and cents viewpoint, corn produced \$69.94 more per acre in 1969 and \$76.80 more per acre in 1970.

Farmers also sell most of the wheat they produce, but use most of their corn to feed dairy animals and other livestock. There usually is added profit in the conversion of corn into milk and meat, especially when it is fed on the farm where it is produced, the Crop Reporting Service said.

Some of the reduction in wheat acreage, it was pointed out, also may have been influenced by Federal support programs and acreage allotments.