

Try A  
Classified —  
It Pays!

# Alfalfa Seed

FROM YOUR  
**PIONEER.**  
SEED SALESMAN

A full line of forage alfalfas for any rotation

Green-Nitro brand for plow-down

High purity, high germination

Pre-inoculated

**PIONEER.**  
BRAND  
CORN and ALFALFA

## FARM WOMEN SOCIETIES

(Continued from Page 25)

### Society 13

Society of Farm Women 13 met at the home of Mrs Irvin Leaman, Ronks. Miss Linda Leaman was in charge of devotions.

Mrs. Ervin Brown, outgoing president, presented the gavel to Mrs R Eugene Hummel. Mrs Brown was presented with a gift certificate in appreciation of her services as president.

Mrs Brown Mrs Hummel and Mrs Pharas Leed represented the group at the State Convention at Harrisburg.

Plans are being made to entertain another Society at a luncheon meeting in March.

The group was reminded of the annual dinner meeting of the Mental Health Association held January 15 at the Hilton Inn.

Mrs Raymond Denlinger and Mrs Robert Sayres, auditors, reported the treasurers account correct.

Musical entertainment was provided by Mr. and Mrs. Aaron Snader, Miss Linda Leaman and Glen Eberly.

The next meeting will be held February 13 at the home of Mrs. Issac Roser, 403 E Clay St., Lancaster.

### Society 17

Farm Women Society 17 held their monthly meeting at the home of Mrs J. Landis Kreider, Quarryville. Roll call was answered by showing a favorite or most unusual Christmas card received this year.

President Mrs J Everett

Kreider gave a report on Farm Show activities. Three members planned to attend.

Secret sister names were revealed with the gift of a handkerchief, and new names chosen for the coming year.

Nylons were cut for pressure pillows for the American Cancer Society.

### Society 25

Farm Women Society 25 met at the home of Mrs. Laban Byers, Lancaster RD6, with 20 members and one guest present. Mrs Joseph Breneisen was in charge of devotions.

Roll call was answered by naming a safety hunt. The gift of the month was received by Mrs. Paul Roland.

Mrs John Henderson, president, conducted the business meeting. Mrs Carl Gish, 3615 Nolt Road, Landisville was received as a new member.

Mrs. Byers, Mrs. John Metz, and Mrs. John Henderson attended the State Convention of Farm Women in Harrisburg January 11 and 12.

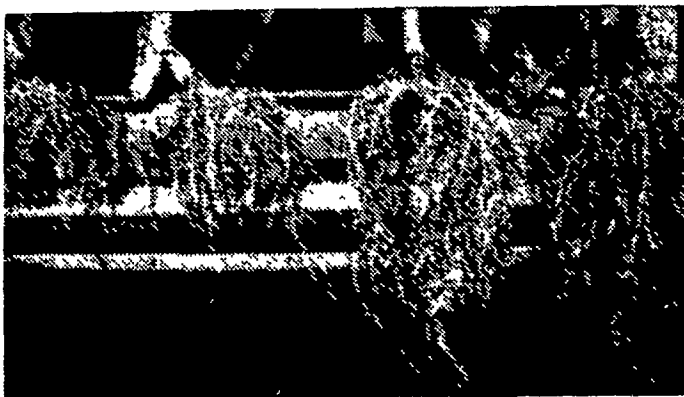
Program speaker was Professor Raymond C Mullins. He used as his theme "Accidents Are Not Accidental."

The next meeting will be held Saturday, February 13 at the home of Mrs. M. Wade Groff, Lancaster RD6. Bed pads will be sewn for the Cancer Society. Each member is asked to bring old newspapers, plastic dry cleaner bags and old sheets.

## TRY A CLASSIFIED AD!

# BUX®

More Farmers Use It Than  
Any Other Rootworm Insecticide  
Here's Proof



Untreated

TREATED WITH BUX

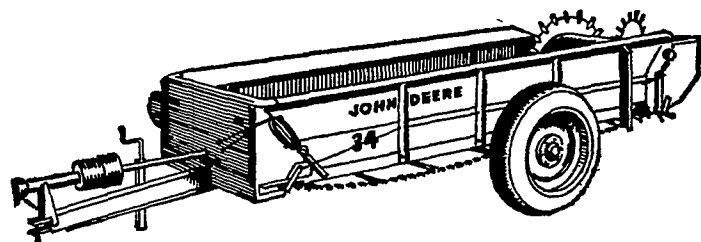
Above picture shows treated and untreated corn roots taken from a field of Earl Kreider's, Route 1, Manheim, Pa.

Economical to use — Order yours now

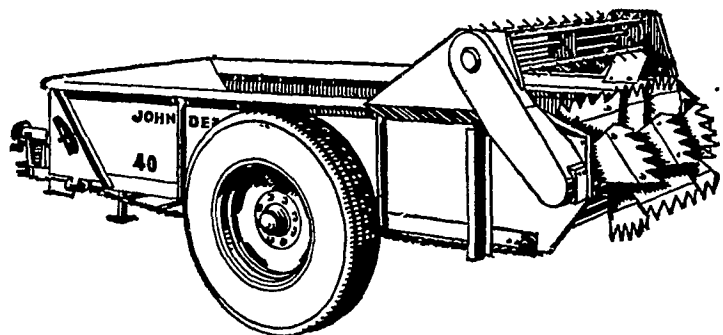
## P. L. ROHRER & BRO., INC.

SMOKETOWN

Phone Lanc. 397-3539



## John Deere 34 and 40 SPREADERS



Easy to load ... easy to operate ... easy to maintain. Those are three good reasons to buy a 145-bu. 34 or 175-bu. 40 Spreader.

Both spreaders are built low to scoot under barn cleaners or fill easily with a front-end loader. Simplified rope controls and single pole hitch mean easy operating, easy maneuvering. Greasing and adjustment points are in the open, easy to reach.

Beater and endgate options let you choose the best combination for your individual needs. Credit? You bet.

Wenger Implement, Inc.  
The Buck 284-4141



M. S. Yearsley & Sons  
West Chester 696-2990

Landis Bros. Inc.  
Lancaster 393-3906

Shotzberger's  
Elm 665-2141

A. B. C. Groff, Inc.  
New Holland 354-4191

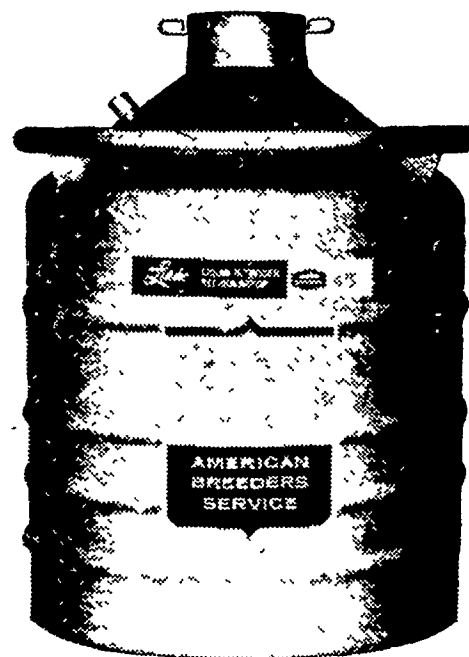
# WANTED!

MORE DAIRYMEN LIKE THESE TO BREED THEIR OWN COWS IN THE NEAR FUTURE!



## A.I. MANAGEMENT SCHOOL SUBJECTS

- Anatomy and Physiology of Reproduction
- Steps in Insemination
- Frozen Semen - Development & Equipment
- Sanitation and Bull Health Programs
- Reproductive Diseases
- Fertility Problems
- Beef and Dairy Sire Selection
- Heat Detection
- Semen Placement and Timing
- Importance of Good Nutrition
- Herd Management & Breeding Facilities
- Insemination Procedures



## WHY WAIT? START NOW!

You can be a member of the next A.I. Management School in your area. Be among the progressive breeders who are taking the lead in this new concept of modern agriculture.

NEXT SCHOOL: MORGANTOWN, PA.  
JAN. 25 - 29

CONTACT: Your Local ABS Representative  
or  
ABS District Sales Manager  
GARY A. WILLIER  
545 Spring Avenue  
Lititz, Pennsylvania 17543



AMERICAN BREEDERS SERVICE, Inc. DeForest, Wis. 53532