

It Happened at the '71 State Farm Show

The Biggest Pumpkin

The biggest pumpkin in the history of the Pennsylvania Farm Show was on display at this year's agricultural exposition.

It was a 260-pounder grown by Howard Sleppy Penn Run RD1, Indiana County. It was first prize in its class.

It was a family affair in big pumpkin competition. Entries by Howard, his brother Ronald, and Howard's father-in-law Jess Ober—all of Penn Run RD1—swept all the prizes in large pumpkin classes. Their nine entries weighed 1,994 pounds.

Howard, who also had a winner in one of the smaller pumpkin classes, said the mammoth pumpkins are excellent for a custard type pumpkin pie.

He said the big pumpkins require about 28 days to reach their peak in growth.

"You can almost see them grow," he said. "They gain about 10 pounds a day during growing season."

Foreign Students Visit

Two foreign exchange students visiting the 55th Farm Show Monday were briefed on Pennsylvania's agricultural prowess Monday were briefed on tary Leland H Bull.

Secretary Bull told Tim Playfair, son of an Australian sheep farmer, and Peter Klarin of Sweden, that Pennsylvania agriculture gets more output per acre than many other states.

The foreign students are attending Wellsboro High School.

Beehive Draws Interest

A 19th century European-style beehive—known as a "straw skep hive"—provided an unusual old-and-new comparison at the 55th Pennsylvania Farm Show.

The glass enclosed skep was mounted on a raised platform with the bottom removed. A mirror underneath the antique hive permitted spectators to easily see inside the structure and watch the bees at work.

The display was placed at the Farm Show by the Walter Bucks Apiaries of Robesonia, Berks

County. David Hackenberg, Lewisburg RD2, Union County explained that this type of hive is illegal in the United States since it is virtually impossible to inspect it.

W W Clarke, Penn State Extension entomologist, said the skep method of beekeeping was more widely used in Europe than in America because tree stumps functioned on the same principle and were readily available from cleared land in this country. The Europeans, being an older civilization, had to use something more easily constructed, hence the straw skep. One disadvantage that the early beekeepers faced was that an apiarist had to kill the bees to harvest the honey in the fall.

A Mother On Display

Motherhood holds no special privileges at the 1971 Farm Show.

Hugo's Grace's Gertrude, a five-year-old registered Guernsey cow gave birth to a son at 9:16 a.m. Monday. About an hour later, Gertrude was in the

show ring being against other well rested beauties when she took fifth place in the aged cow class. She is owned by Frederick A Hobaugh, York RD1. For Gertrude, it was all in a day's work at the Farm Show.

Breed For Profits

Dairy farmers can increase profits by improving breeding programs. Pennsylvania Guernsey Breeders Association members were told Tuesday at their annual meeting in Harrisburg in conjunction with the Farm Show.

Clinton E Meadows, extension dairy specialist at Michigan State University, said that since offspring tend to resemble parents, the best way to produce outstanding cows is to mate bulls with high production daughters to high producing cows.

Meadows offered these suggestions for greater profits: base breeding selections on facts; select breeding stock more intensely; feed better; maintain an excellent herd health program; maintain complete records; al-

ways be ready for the milk inspector.

New Market Service

A teletype machine, reporting the latest livestock market information from all corners of the nation, is another innovation at the 1971 Farm Show. This marketing service reports cattle, hog, sheep and grain price information and can be seen at the Pennsylvania Livestock Association exhibit.

The Bureau of Markets, Pennsylvania Department of Agriculture, supplies a nationwide agency with the latest prices from 13 auctions in Pennsylvania. The information is then relayed to subscribers throughout the country.

Raw Milk Standards

Raw milk must meet more rigid standards than the pasteurized product, the Pennsylvania Raw Milk Producer-Distributors Association was told at a meeting held in conjunction with the Farm Show.

Bacteria standards for raw

milk are higher than those for pasteurized, William G. Fouse, chief of the State Agriculture Department's Division of Milk Sanitation, told the association's members.

A Champion Revisits

The Pennsylvania Farm Show's first horseshoe pitching champion likes the 1971 version of the agricultural event but...

Steward Straw, Clearfield, thinks the quiet and leisureliness of the first show held in the present complex—the year was 1931—preferable to the hustle of this year's famous event.

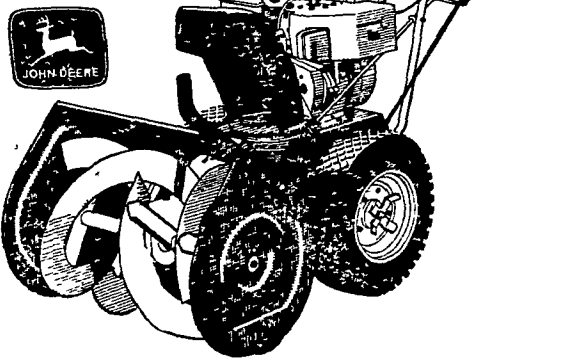
The 89-year-old former school teacher and ex-farmer won the horseshoe pitching contest the first time it was held, 40 years ago. He won again in 1932 and 1934.

"Then to get rid of me, they made me a judge of the contest," Straw said during a visit to the 1971 show. "I guess I'd won the contest too often."

(Continued on Page 7)

snow wonder

Don't push yourself this winter... walk behind a new John Deere Snow Blower. Three models: 5-h p. model with 26-inch cut, and two 7-h p. models, 26-inch cut or 32-inch cut. If you're tired of shoveling... it's snow wonder. See us soon.

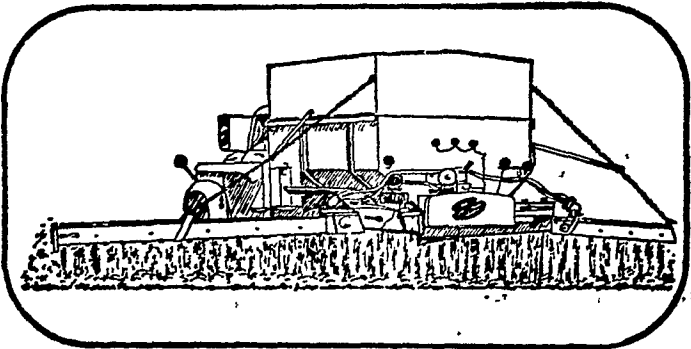


Landis Bros., Inc.

1305 Manheim Pike, Lancaster, Penna.

SALES ★ 393-3906 ★ SERVICE

APPLY LIME ON FROZEN GROUND



Don't hesitate to apply lime, even if the ground is frozen. The freezing and thawing action of winter helps disseminate the lime, assuring you a properly balanced soil, ready for spring plowing. And remember, liming pays in extra bushels and tons of crops and forage.

MARTIN'S LIMESTONE

Blue Ball, Pa. 354-4125

Gap, Pa. 442-4148

Public Sale

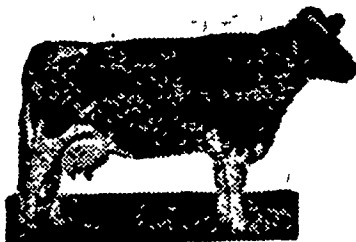
OF LIVESTOCK AND FULL LINE OF FARM EQUIPMENT

ON

THURSDAY, JANUARY 21, 1971

10:30 A. M.

Located 2 miles east of Intercourse at the intersection of the Old Philadelphia Pike (Rt. 340) and New Holland Road, 6 miles south of New Holland, Lancaster County, Pa.



30 Registered and Grade young cows and first calf heifers

Fresh or due around sale time, hand picked for this sale, Many with records from 13,000 to 16,000 lbs. milk.

These daughters sell: Glenafton Royal Hamilton, Forest Lee Rocket Centurion, Tidy Ideal Burke, Grayview Sky-cross, Penstate Starman, Citation Charmer Marshall, Pac-lamar Ivanhoe Black Eagle. Two service age bulls from record dams with 18,806 - 702 - 4% - 305 dy., and 19,854 - 727 - 3.7% - 356 dy. Cattle have plenty of size, some classified.

1 pair sorrel mules, 6 & 7 year old, well broke; 1 - 4 year old roan mule; 2 - 7 year old black mules; 1 buckskin mule; 8 sets of harness, collars, bridles, 4-5-6 horse trees.

FARM EQUIPMENT

John Deere 20 disc harrow, 12-A New Idea spreader, 16 ft. Grove steel wheel wagon, McCormick hay conditioner, Ontario 14-7 disc drill, 3 cultivators, 16 inch Oliver Radex trailer plow, 14 inch 2-way McCormick Radex plow, John Deere 999 corn planter, N.I. Transplanter, 4 section McCormick spring harrow, steel roller, cultipacker, No. 5 J.D. mower with 8 HP Wisconsin engine, spring wagon, 60 HP International power unit.

DAIRY EQUIPMENT

Sputnick (milk porter) pump enclosed by Stainless Steel cabinet, Walker approved 430 gallon Girton Bulk tank with 4 h.p. compressor, like new; DeLaval #75 pump and motor, S.S. tubs, S.S. carrying pail, S.S. strainer, barn (Jamesway) ventilating 19 inch fan (2 speeds), silage distributor, (3) bunk feeders 14 ft. and 16 ft., 32 ft. extension ladder, silage and feed carts, wheelbarrow, fogger (new), Penna. 3 gang lawn mower, 1/2 inch electric drill, 1/4 horse motor, 2 bale boxes, platform scales, hay, straw, silage, lots of ear corn.

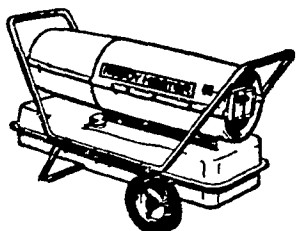
Catalogs. Sale held under cover. Cattle will be sold at 1:15 p.m. sharp. Machinery at 10:30 a.m.

ELI KING
Owner

Diller and Kreider, Auctioneers

Lunch Available

Plug it in and forget it . . .



This high-capacity Reddy Heater has an automatic safety shut-off control

Exclusive control gives you peace of mind. Stops heater automatically if flame or ignition fail. Makes it ideal for building tradesmen, farmers, warehouses — any application where heater must run unattended overnight. Big 85,000 BTU capacity. Runs up to 145 hours on tankful of low-cost kerosene. Hauls easily in a car. Ask for demonstration.

REDDY HEATER

GEHMAN BROS.

Sales and Service

1 Mile North of Terre Hill on Route 897 East Earl, R. D. 1, Pa.

Phone 215-445-6272