

Poultry Market Reports

Eastern Pa. and N. J.

Wednesday, December 30

Prices of light type hens generally held unchanged. Some instances and unconfirmed lots were noted as high as 6¼ cents for future pickup. Offerings generally adequate as plants working a short week because of holiday Friday. Advanced bookings heavy for first part of January. Offerings of heavy type hens adequate for limited needs. Prices paid at farm: Light type hens 4-6, mostly 5¼-6 in Pa., mostly 5½-6 in New Jersey. Heavy type hens TFEWR.

Delmarva

Wednesday, December 30

Ready-to-cook movement fair but generally less aggressive than desired. Slaughter schedule continues heavy at most plants. Desire heavier than demand carry over from day to day. Less than truck lot prices unchanged on both plant and activity for next week.

US Grade A Advance interest spotty. Live supplies ample. Undertone steady. Pooled truck lot prices for Thursday arrival in New York are US Grade A 27½-29½, mostly 28-28½, Plant Grade 26½-28, mostly 27.

New York Eggs

Tuesday, December 29

Prices somewhat irregular. Receipts moderate. Trading stocks of fancy large whites adequate; extra large whites fully adequate with street sales noted mostly at 44½c up. Extra large browns short while large browns offered at 39c failed to attract interest. Mediums continue in longest position. Small short of local needs. Overall demand fairly good but not as aggressive as anticipated in some quarters. Dealers continue free discounting in effort to stimulate activity. Carton orders fair for delivery balance of the week but increasing to good under day. Less than truck lot prices anticipated. Retail promotional unchanged on both plant and activity for next week.

Fogelsville

Monday, December 28

(Prices Paid Dock Weights, Cents Per lb except where noted)

Hens, heavy type 8-19, mostly 10-14; Pullets 21-26½, M 21-24, Roasters 28-32½, Ducks 27 37½, M 27-31; Drakes 38-46; Geese 20½-44, M 38-44, Rabbits 51, Guineas 65½-75½, M 74-75½, Pigeons (per pair) 135. Total coops sold 268.

New Holland Dairy Cattle

Wednesday, December 30

Market stronger. Load New York State cows, fresh, 435-660, springers, 430-610. Load Canadian cows, fresh, 445-530, springers, 400-610. Two loads New York State and Canadian cows, fresh, 425-500, springers, 400-470. Franklin County herd dispersal, all stages of production, 320-485. Locally consigned cows, mostly fresh, 300-610. Heifers, 290-345. Bulls, 305-350.

Green Dragon Dairy Cattle

No sale last week due to holiday.

Weekly UEP Egg Market

Prices to the Producer

Tuesday, December 29 and Thursday, December 31

Region	Large		Medium		Small	
	44½	44½	34	34	28	23
Northeast	44½	44½	34	34	28	23
Northwest	38	38	31	31	21	18
Central West	36	36	29	29	21	18
Southwest	35	35	28	28	21	18
Midwest	40½	40½	31	31	19½	17½
Southeast	41	41	33	33	27	24
National Average	41	41	32	32	24	21

Weekly New York Egg Mkt.

From Monday, December 28th to Friday, January 1st

	Mon.	Tues.	Wed	Thurs.	Fri.
WHITE					
Fcy Ex Lg	44½-45½	44½-45½	44½-45½	44½-45½	
Large	44½	44½	44½	44½	
Mediums	40	40	40	40	
Pullets	28	28	28	28	
Peewees	20	20	20	20	
BROWN					
Fcy Large	43	43	43	43	
Mediums	Unquoted				
Pullets	Unquoted				
Peewees	Unquoted				
Standards	40½	40½	40½	40½	
Checks	24	24	24	24	

Tone — Holiday movement good in most areas. Outlook mixed and open offerings for next weeks delivery meeting little interest even at discount prices.

Copyright 1970 by Urner Barry Publications

U.S. Inspected Livestock Slaughter

For week ending Wednesday, December 30

	Cattle	Hogs	Sheep
Week to date	353,000	1,014,000	122,000
Same period last wk.	337,000	1,051,000	113,000
Same period last yr.	327,000	862,000	111,000

Estimated daily livestock slaughter under Federal Inspection.

BUX®

MORE FARMERS USE IT THAN ANY OTHER ROOTWORM INSECTICIDE

Here's Proof

Here's Why

□ Effective, season-long control of resistant and non-resistant rootworms. There's no mid-season letdown when you use BUX.

□ Doesn't leave harmful residues. Corn protected with BUX, whether grown for grain or silage, can be fed to livestock.

□ Less hazardous to use than most rootworm insecticides. You don't need a respirator or other special equipment with BUX. Just apply it according to label directions, as with any pesticide.

□ Resists leaching in rainy weather. Even heavy rains right after application won't leach BUX out of the soil.

□ Odor-controlled. There's no objectionable smell as with most rootworm insecticides.

□ Won't damage application equipment. BUX is formulated on non-abrasive clay granules. So there's no worry of it tearing up your pesticide applicator.

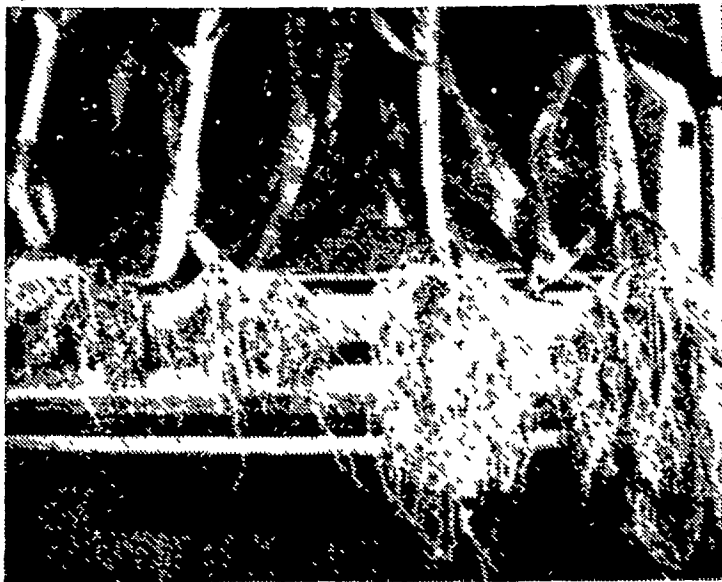
□ Choice of formulations. BUX is available in free-flowing granular or liquid forms.

□ Recommended by university entomologists. And used by more farmers than any other rootworm insecticide — the best recommendation possible.

Economical to use — Ask about early season discount.

P. L. ROHRER & BRO., INC.

SMOKETOWN
Phone Lanc. 397-3539



Untreated TREATED WITH BUX

Above picture shows treated and untreated corn roots taken from a field of Earl Kreider's, Route 1, Manheim, Pa

Chicago Cattle Weekly Review

Note — The Chicago market was not available at press time due to early publication.

Penn State Establishes New Research Center

A research center to study fusarium, one of the most damaging and widespread organisms causing diseases of food crops, has been established at Pennsylvania State University. Known as the Fusarium Research Center, it will deal with state, national, and international problems posed by fusarium species.

The new center operates within the Department of Plant Pathology in the College of Agriculture. Funding of projects will be handled through the Agricultural Experiment Station, the research division of the College of Agriculture.

Directing the Fusarium Research Center are Dr. Paul E. Nelson, professor of plant pathology, and Dr. T. A. Toussoun, adjunct associate professor of plant pathology and president of the Institute for Fungus Research in San Francisco, California.

Laboratories of the Center maintain a collection of over 2,600 cultures of fusarium species from various parts of the world. The major portion of the collection includes over 1,500 isolates of Fusarium roseum, a fungus responsible for numerous diseases of agronomic and horticultural crops.

LLOYD H. KREIDER

Auctioneer and Sales Manager

330 West State St.
Box 2 RD1
Quarryville Pa. 17566
Ph: 786-3394

Beef Promoted by Radio

To take advantage of all the time people spend listening to some 300 million radios here in the U.S., the Beef Industry Council of the National Live Stock and Meat Board has developed "Give Your Listeners Beef Tonight", a public service record with 20 different messages.

The messages, recorded to the Beef Industry Council's musical theme, "You can Bet It's Beef, Boy" emphasize beef's nutritional value, flavor, versatility and convenience. They also give the homemaker tips on food shopping, meal planning, and preparation.

The spots can be used also as part of radio advertising programs of food stores and others involved in the merchandising and promotion of beef.

Released during the first of November, the records have already been distributed to 1400 metropolitan stations, plus radio farm broadcasters, extension specialists and livestock organization information specialists. Comments show a favorable response with requests that more such material be made available.

Weaver Promotes Kunkle

Ray B. Kunkle, Ephrata RD3, has been promoted to a supervisory position in the Liquid Egg Department of Weaver Quality Eggs, Inc., a subsidiary of Victor F. Weaver, Inc., New Holland.

Kunkle joined Weaver in 1965 and has held several supervisory positions in the Fresh Poultry Processing Division of Victor F. Weaver, Inc.

In his new position, he will be responsible for the supervision of the egg breaking operation which pasteurizes and processes about 50,000 gallons of liquid egg products weekly for institutional marketing.

Try A Classified Ad — It Pays!