

8 MONEYMAKING ALFALFAS

- DuPuit
- Vernal
- Buffalo
- Ranger
- Cayuga
- Haymor
- Northwest Common
- Promor

8 MONEYMAKING CLOVERS

- Certified Pennscott
- Select Pennscott
- Penna. Medium Red
- Midwest Medium Red
- Mammoth
- Alsike
- Yellow Sweet
- Tall Sweet

Fresh seed mixed and Inoculated (FREE)

Save with REIST'S SEEDS

REIST SEED COMPANY

Finest Quality Seeds (Since 1925)

Mount Joy, Pa.

Ph. 653-4121

For good production next lactation,



FEED PURINA DAIRY CONDITIONER

As a dairyman, you know that good milk production doesn't just happen. It's something you plan for by establishing a herd with the genetic potential for good production, then managing and feeding your cows so they'll produce up to their bred-in ability.

Many successful local dairymen also plan for good production with a proven program of dry cow feeding. They need Purina Dairy Conditioner, a research-proven ration to help give dry cows body condition they need for good production after they freshen.

Purina Dairy Conditioner is an extra-palatable 12½ percent protein ration. It's fortified with vitamins A and D plus extra phosphorus to help guard against milk fever.

Purina Dairy Conditioner is low-cost, too, because the amounts you feed depend on your cows' condition and on the quality of the roughages you feed. For example, a cow dried off in good condition being fed high-quality roughages would require less Dairy Conditioner than a cow in only fair condition being fed fair quality roughages.

Drop in soon and get your free copy of the Purina Dry Cow Program folder. We'll be glad to show you how Purina Dairy Conditioner can help you prepare your dry cows for good production next lactation.

John J. Hess, II, Inc.
Ph: 442-4632
Paradise

John B. Kurtz
Ph: 354-9251
R. D. 3, Ephrata

Ira. B. Landis
Ph: 394-7912
1912 Creek Hill Rd., Lanc.

James High & Sons
Ph: 354-0301
Gordonville

West Willow Farmers Assn., Inc.
Ph: 464-3431
West Willow

Wenger's Feed Mill Inc.
Ph: 367-1195
Rheems

State Vegetable Production Up, Processed Tomatoes Set Record

The combined production in Pennsylvania of five vegetables for the fresh market and eight for processing is estimated at 290,800 tons for 1970, up six per cent from last year, but 11 per cent below 1968.

The fresh market harvest was up three per cent from a year ago. The five fresh market vegetables are snap beans, cabbage, sweet corn, tomatoes and strawberries.

The processor's production was seven per cent above a year ago, but 17 per cent below the big 1968 crop, which was the largest in 10 years. The processing vegetables are snap beans, sweet corn, tomatoes, lima beans, cabbage, cucumbers, peas and spinach.

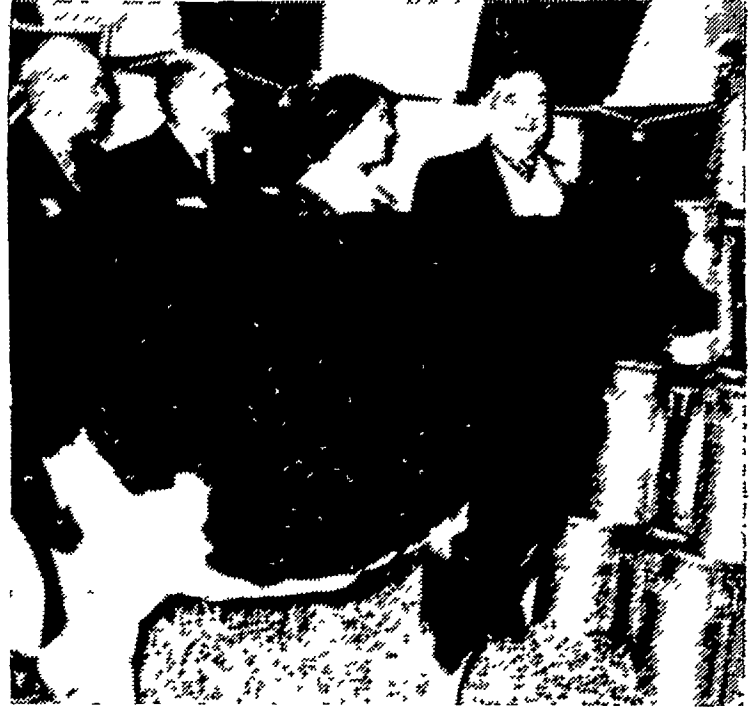
The most prominent yield change was that of tomatoes for processing, up from the 1969 yield of 150 tons to a record 1987 tons this year. This is the highest yield on record, and the third highest yield in the Nation this year with only California and Ohio recording higher yields. The 1970 record yield surpasses the previous record yield of 17.7 tons in 1968.

Fresh market growers received \$10.2 million for their crops this year, up slightly from the \$10.1 million received last year. Value at the processing plant door of the production for processing was 8.8 million or six per cent above a year earlier.

The early growing season for most of the Commonwealth was mild and wet, causing some planting and field work to be delayed; however, growing conditions were generally favorable with rainfall near to slightly above normal over most of the State.

Cloudy and rainy weather predominated during July and

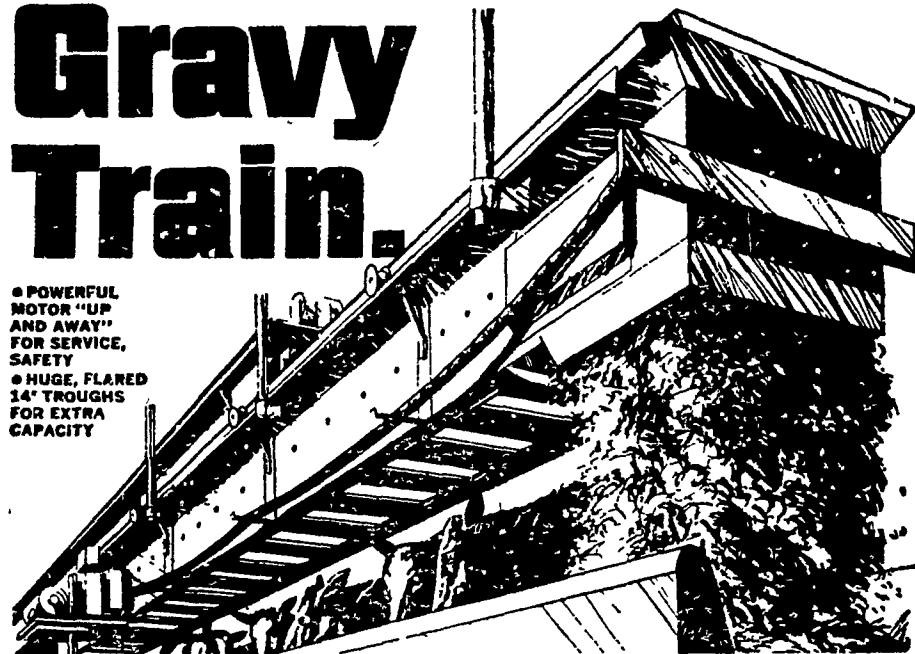
the early part of August with adequate soil moisture furthering crop development. The weather toward the last part of August and during September was generally favorable for harvesting operations. The growing season was extremely long with the state-wide frost occurring on the morning of November 18, almost one month later than last year.



Glen E. Morrow (right) of Bethesda, Md., shows off his prize registered Holstein cow, Reinharts Arthur-Farms Ballard, to three Maryland guests during ceremonies in the cow's honor recently at Glen-Lu-Knoll farm near Frederick, Md. The dairy cow boosters are, left to right: Dr. Ralph E. Hodgson, director of the animal science division at the U. S. Department of Agriculture's Agricultural Research Service experiment station near Beltsville; Dr. Richard F. Davis, head of the Department of Dairy Science at the University of Maryland, and Susan A. Fry of Cecilton, state dairy princess. Morrow and Dr. Hodgson grew up together on neighboring Wisconsin dairy farms near Mazomanie (Dane county). Morrow's cow completed a 365-day world's production record Dec. 7 for twice-daily milking, with 40,980 pounds of milk testing 3.2 per cent butterfat. Ballard began her official test as a five-year-old.

Gravy Train.

- POWERFUL MOTOR "UP AND AWAY" FOR SERVICE, SAFETY
- HUGE, FLARED 14" TROUGHES FOR EXTRA CAPACITY



Strength, Performance, Dependability. You've got 'em all with VAN DALE'S NEW TRAVELING BUNK FEEDER.

Van Dale's SCF-1400 is the traveling feeder to put you on the track to faster, more profitable operations. Automatically, it delivers up to 40 tons of silage per hour to bunks on a single chain, continuous "shuttle" service.

Feeder trough chain is No. 67 pin-tile (12,500 lb. strength) and drive chain is C-550 steel (average top strength of 10,000 lbs.). Interlocking, snap-together galvanized metal components reduce erection time as much as 50%. Suspended or floor-mounted, rails are mounted with Van Dale's exclusive clip-on brackets to provide extra-rigid support. Unit adapts to any feeding need in-barn or out-of-doors.

CALEB M. WENGER

R. D. 1
Drumore Center
Quarryville, Pa.
Phone 548-2116

VAN DALE

