

Statewide Pullet Symposium Set Dec. 17 at Shamokin Dam

A statewide meeting entitled "Started Pullet Symposium III" will be held from 9 a.m. to 4 p.m. December 17 at the Holiday Inn, Shamokin Dam.

Sponsored by the Poultry Science Extension of Penn State University, the program is as follows:

9:30 a.m. — "Maturity Control of Pullets" with Dr. Kenneth Goodwin, Poultry Science Department, Pennsylvania State University.

10:15 a.m. — "Ventilation"

with Dr. Floyd W. Hicks, poultry specialist, Pennsylvania State University.

11 a.m. — "Brooding Methods" with Harold Wright, commercial production manager and manager of commercial operation, DeKalb Agricultural Association, DeKalb, Illinois.

11:30 a.m. — "Costs of Production" with Herbert C. Jordan, poultry specialist, Pennsylvania State University.

Ernest Orr, assistant county agricultural agent, Northumberland County, is in charge of the afternoon session. Sessions are:

1:30 p.m. — "Water Quality" with Thomas A. Carter, graduate student in the Poultry

Science Department, Pennsylvania State University.

2 p.m. — "Nutritional and Health Relationships" with Dr.

New Cooperators

Lancaster County Soil and Water Conservation District approved several new cooperators and cancellations of existing members at its November meeting.

New cooperators are: Edwin Ranck, Sadsbury Twp., 100 acres; Glenn Robinson, Conestoga Twp., 19 acres; Lloyd H. Denlinger, East Lampeter Twp., 48 acres; Warren Posey, Salsburg Twp., 94 acres; Amos Glick, Bart Twp., 67 acres; Henry Stoltzfus, Sadsbury Twp., 60 acres; H. Melvin Charles, Manor Twp., 103 acres.

Cancellations were: S. Robert Black, Little Britam Twp., 126 acres; Charles F. Gore, Drumore Twp., 125 acres; Norman Wood, Fulton Twp., 123 acres; Harry B. Harnish, West Lampeter Twp., 82 acres; Harold C. Herr, Colerain Twp., 238 acres; Ralph Byers, East Drumore Twp.; Sueie L. Myers, East Drumore Twp., 120 acres; Henry Berg, East Donegal Twp., 82 acres; Paul K. Charles, Manor Twp., 75 acres; John H. Hersh, Strasburg Twp., 31 acres; Mansel Bailey, Sadsbury Twp., 122 acres.

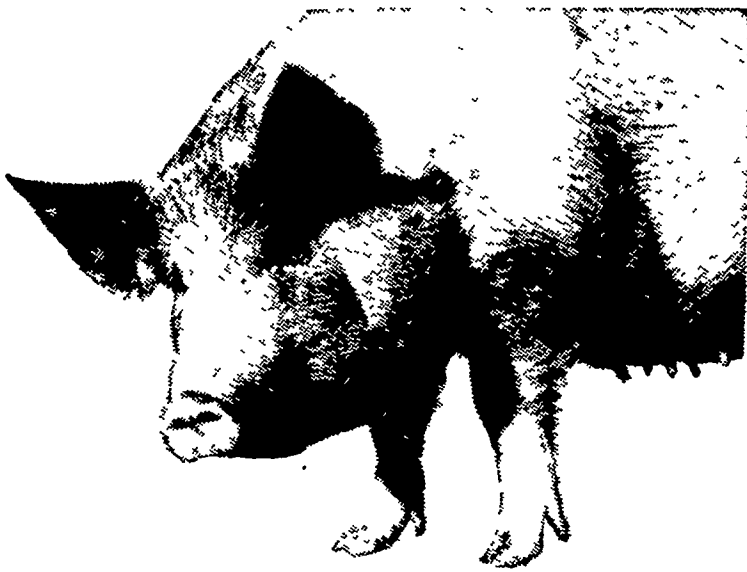
Try A
Classified —
It Pays!

Owen D. Keene, poultry specialist, Pennsylvania State University.

2:30 p.m. — "Edema Diseases" with Dr. L. Dwight Schwartz, Extension poultry veterinarian, Pennsylvania State University.

3 p.m. — "Review of Marek's Disease" with Dr. Robert F. Gentry, professor of veterinary science, Pennsylvania State University.

3:30 p.m. — Questions, discussion and summary.



PURINA[®] FARROWING CHOW[®]

Bulky-Laxative-Palatable

Farrowing Chow was built specifically to give your sows that extra help they need at farrowing time.

- 1) It's the kind of bulky, laxative ration sows need just before and after pigs come.
- 2) Sows like it, go for it... at a time when they are often "finicky" eaters.
- 3) It's highly fortified with extra vitamins and minerals sows need at farrowing time.
- 4) Farrowing Chow FZ contains nf-180*, which helps control scours in baby pigs.
- 5) It's a complete ration... easy to feed and store.
- 6) It's the result of five years of testing on sows at the Purina Research Farm.

Give your sows every chance to farrow big litters and get 'em off to the right start.

Give them the "built-in" advantages of Purina Farrowing Chow. Available now at our store.

*Reg. trademark—Hess and Clark

John J. Hess, II, Inc.
Ph: 442-4632
Paradise

John B. Kurtz
Ph: 354-9251
R. D. 3, Ephrata

Ira. B. Landis
Ph: 394-7912
1912 Creek Hill Rd., Lanc.

James High & Sons
Ph: 354-0301
Gordonville

**West Willow
Farmers Assn., Inc.**
Ph: 464-3431
West Willow

**Wenger's Feed Mill
Inc.**
Ph: 367-1195
Rheems



MARTIN'S 41% Steer Concentrate

With Stilbosol[®] for better
feeding efficiency

MARTIN'S FEED MILL

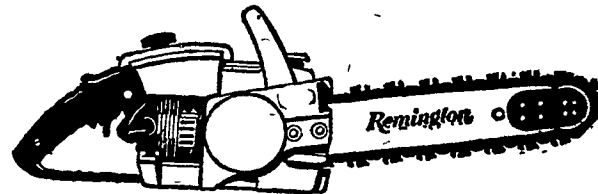
R. D. 3, Ephrata, Penna.

Phone 733-6518

© Diethylstilbestrol Elanco Products Co.

NOW!

IS THE TIME TO PURCHASE YOUR
REMINGTON CHAIN SAW
THERE IS A DIFFERENCE
SATISFACTION GUARANTEED



FOR A LARGE SELECTION OF
NEW & USED CHAIN SAWS... SEE

GEHMAN BROS.

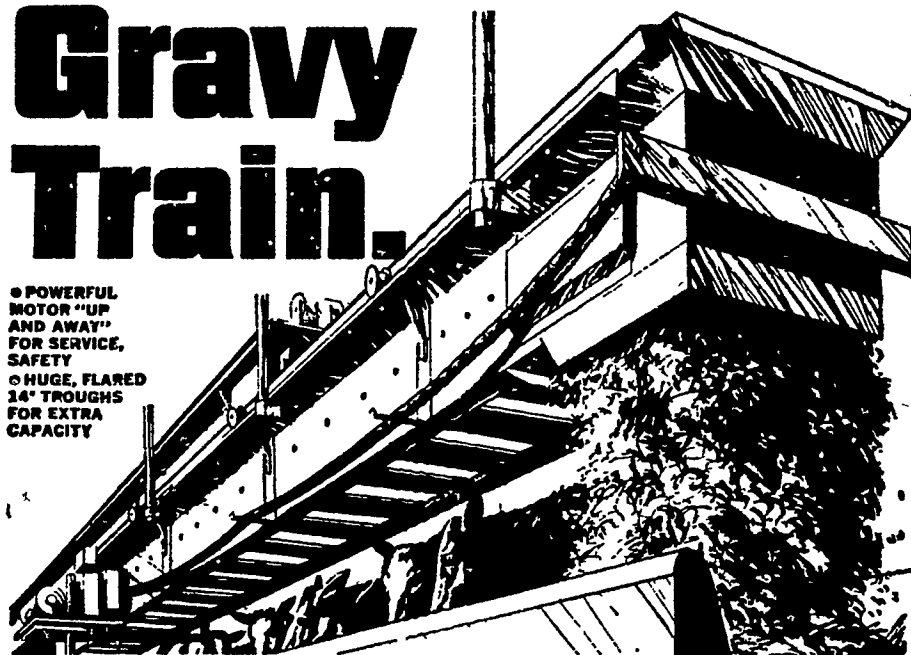
SALES & SERVICE

Phone 445-6272

1 Mi. North of Terre Hill on Rt. 897 East Earl R. D. 1

Gravy Train.

POWERFUL
MOTOR "UP
AND AWAY"
FOR SERVICE,
SAFETY
HUGE, FLARED
14" TROUGHS
FOR EXTRA
CAPACITY



Strength, Performance, Dependability. You've got 'em all
with VAN DALE'S NEW TRAVELING BUNK FEEDER.

Van Dale's SCF-1400 is the traveling feeder to put you on the track to faster, more profitable operations. Automatically, it delivers up to 40 tons of silage per hour to bunks on a single chain, continuous "shuttle" service.

Feeder trough chain is No. 67 pin-tie (12,500 lb. strength) and drive chain is C-550 steel (average top strength of 10,000 lbs.). Interlocking, snap-together galvanized metal components reduce erection time as much as 50%. Suspended or floor-mounted, rails are mounted with Van Dale's exclusive clip-on brackets to provide extra-rigid support. Unit adapts to any feeding need in-barn or out-of-doors.

CALEB M. WENGER

R. D. 1
Drumore Center
Quarryville, Pa.
Phone 548-2116

VAN DALE