

Inter-State Co-Op Reviews Milk Hauling

"We are faced with an increasing problem of shifting milk on weekends, and next year when all holidays fall on Monday, the problem will become more acute," asserted Watson E. Buckman, Director of Transportation, Inter-State Milk Producers' Cooperative, at Philadelphia recently as he addressed delegates of Inter-State Milk Producers' Cooperative's annual meeting in the Marriott Motor Hotel.

The representatives of more than 3,000 dairy farmers from four states were cautioned by Buckman when he said, "This problem is caused by the continued shift of milk sales from home delivery to store sales. It is further compounded by store sales running very high during the week, making it necessary for the dealer to need a large volume of fluid milk during the week days and relatively small amounts on the weekend when stores are closed. This is in many instances sorely taxes the ability of manufacturing facilities in the area to handle such peak loads on a weekend basis. 'This is a problem that will

not go away by ignoring it — it will be with us in the future." "The shifting of milk to balance supplies in itself doesn't usually cause an undue cost to our haulers, due to using the haulers nearest to the receiving plants. However, when it becomes necessary to divert milk on a large-scale to more distant points such as the Maryland-Virginia plant at Laurel, Md, particularly on holiday weekends such as Christmas and New Year's, we are placing on a selected group of haulers and

men the burden of handling surplus milk of your cooperative.

"We are studying a zoning plan so as to achieve a uniform hauling rate for all producers in an equidistant radius from their main market place.

Buckman continued, "There is much work to be done in the hauling portion of your Cooperative's activities.

"The elimination of many trucks in a given area would be

a sure means of saving hauling time, due to lack of uniform inspection and producers being assigned to particular dairies. "There is much that can be accomplished in hauling and I sincerely hope we will be able to succeed in bringing about many beneficial changes in the coming year."

"It is not attainable at this

FARM WOMEN

(Continued from Page 19)
ty is planned at the Harrisburg State Hospital this month with Mrs. James Garber as chairman.

The evening was spent sewing pads for the Cancer Society and made other pads, stuffed with nylon stockings. In charge of the work project were Mrs. Herbert Frey, Mrs. Witmer Shearer, Mrs. Wilbur Erb.

The next regular meeting will be held December 15 at the home of Mrs. Luke Brubaker, Mount Joy RD1. A Christmas party and a dollar gift exchange will take place.

At a previous social meeting, husbands were guests at a hayride and progressive supper. The appetizers were served at Donegal Orchards, Mount Joy RD1, with Mrs. Robert Dunkelberger and Mrs. Roy Wolgemuth as hostesses. The main course was held at Spring Valley Farm, Marietta RD1, with Mrs. John Hershey, Mrs. Herbert Frey, Mrs. Robert Shearer and Mrs. John Nissley as hostesses. The salad was served at the Dan Mar Farm, Mount Joy RD1, with Mrs. Daniel Stoltzfus and Mrs. Roy Sauder as hostesses. Dessert was served at Green Acres Tourist Farm, Mount Joy RD1, with Mrs. Wayne Miller and Mrs. Kathryn Fry serving as hostesses.

The invocation was given by James Garber. Music was provided by Dwayne Craul.

Society 28

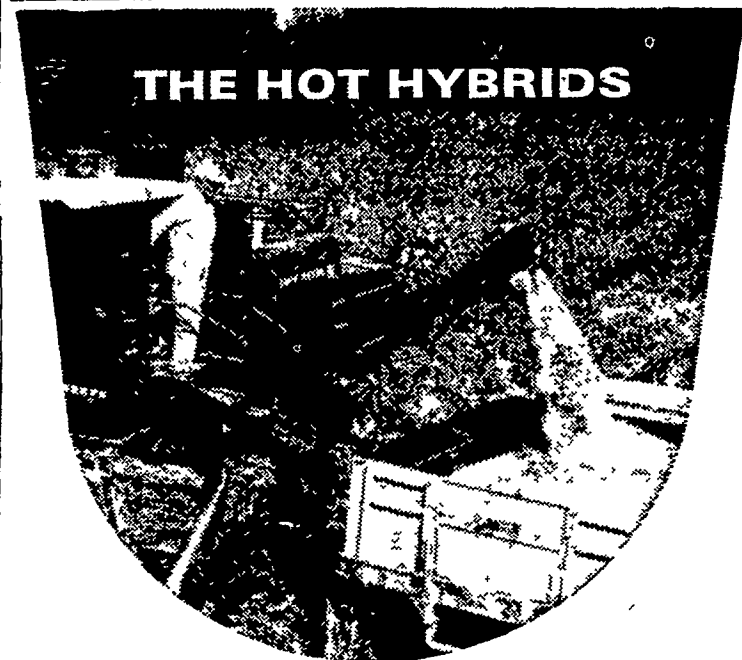
Society of Farm Women 28 met in the home of Mrs. Harold Byers, 75 Hillcrest Ave., Strasburg, for an evening of games as the program.

Mrs. Raymond Landis served as co-hostess. Mrs. James Martin was in charge of devotions. Mrs. William Dean Jr., president, was in charge of the meeting. Mrs. Harold Rohrer read the bylaws.

Members planned a food stand at the public sale of Benjamin D. Leaman, 2021 Horseshoe Road, Lancaster.

Members set up a bazaar table at the Farm and Home Center for Homemakers Day November 30.

The next meeting will be held on December 10 at the home of Mrs. Marvin High, 66 Valley Road, Neffsville. The program will feature a PP&L home economist demonstrating holiday foods.



PERFORM where it really counts

- Top Yield Potential
- Strong Standing Stalks
- Easy to Harvest
- Dependable



A. H. HOFFMAN SEEDS, INC. • Landisville (Lancaster County), Pa.



NOW! PLAN FOR 1971

1. **Alfalfa** — Topdress now with fertilizer containing Chick Weed control. Use our premium containing Magnesium, Sulfur, and Boron. Reduce winter freeze out and increase next years yields.
2. **Fall Plow for CORN** — Apply your fertilizer before fall plowing, a proven practice. Anhydrous Ammonia can provide you a leach resistant form.
3. **SAVE** — Fertilizers bought in Nov. and Dec. offer maximum "off season" discounts. Buy now.
4. **Take SOIL TESTS**

ORGANIC PLANT FOOD CO.

GROFFTOWN RD., NEXT TO WATERWORKS
Ph. 392-4963 or 392-0374

YOUR FULL SERVICE DEALER

farmers say,
"It's the one spreader that spreads cost and upkeep as well as manure."

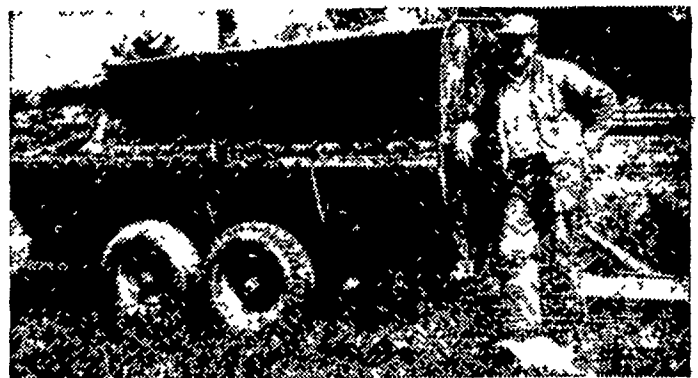
"Sure my next spreader will be a Hawk Bilt, if this one ever wears out." D. H., Vinton, Ia. (pictured below)

"It really slings the manure and I've had virtually no maintenance or repairs." L. J., Walcott, Iowa.

Testimonials like these, plus years of field experience, show you can expect an average of 7 years of service from a Hawk Bilt spreader.

Don't take our word for it. Come in now and start proving it to yourself. Choose from 5 models—3, 4, 5, 6 and 7.5 ton capacities—to fit your spreading needs.

Hawk Bilt builds for Farmers because Farmers built Hawk Bilt.



Cope & Weaver Co.

FARM EQUIPMENT

New Providence, Pa.

Phone 786-7351