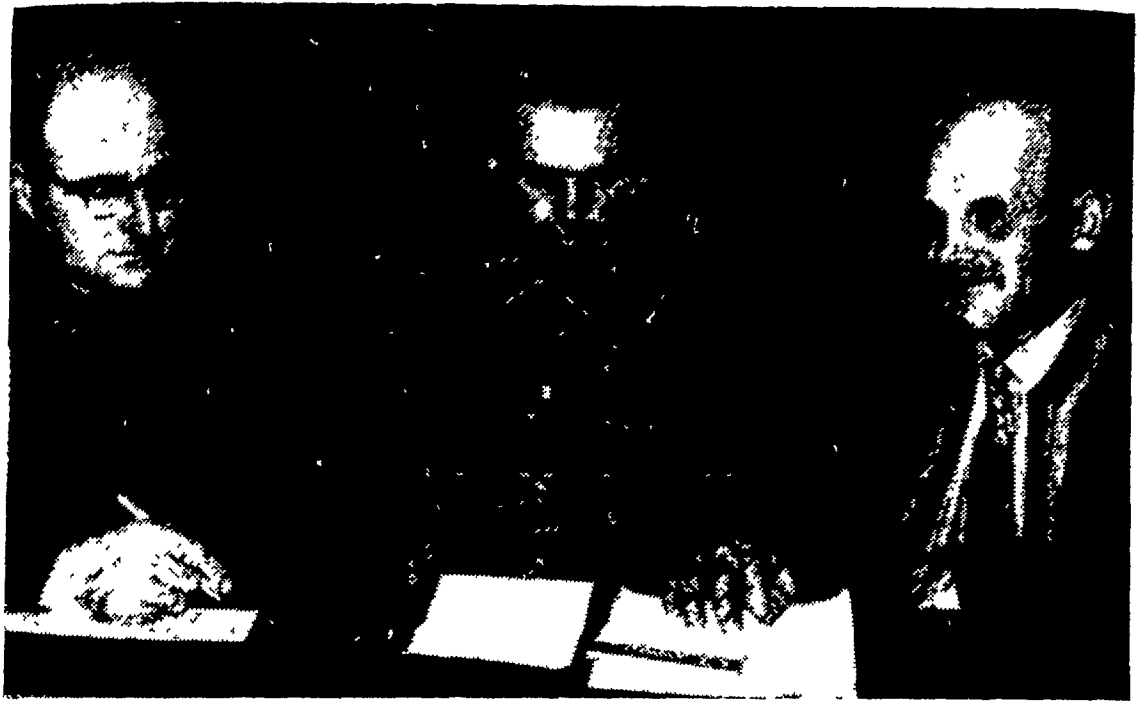


DHIA Lowers Fee Hike, Discusses Central Lab

The Lancaster County DHIA number of samples of producing cows, but directors said it to lower the new fee required would be much easier to administer across the board figure. Uncertainty was expressed about just how much the new system will cost the county. The state system will cost an additional 10 cents per test, but some savings is expected on material and equipment no longer necessary at the local level. It was agreed the county DHIA treasury is probably ample to absorb any loss from the seven-cent fee.

An eight cent per cow increase had been voted earlier this year, but directors reduced that increase to seven cents this week. The reduction was made after several directors reported complaints from various dairymen throughout the county. Complaints were particularly reported from dairymen with a relatively high percentage of "dry" cows. The average herd in the county has 85 per cent of cows milking, with the rest dry for various reasons, it was reported.

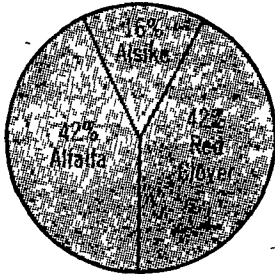
Some directors Monday initially urged a fee-increase based on the new milk-o-tester equipment



The committee planning the 1970 DHIA annual banquet is shown at the Monday DHIA meeting. They are, from left to right: Elmer Weber, Peach Bottom RD1; Harry Ranch, Ronks RD1, Elam Bollinger, Manheim RD1. The banquet is scheduled for 11:45 a.m. January 19 at the Farm and Home Center. Tickets will be available later from the various milk testers.

er, Manheim RD1. The banquet is scheduled for 11:45 a.m. January 19 at the Farm and Home Center. Tickets will be available later from the various milk testers.

LANCASTER FORMULA



Used on winter grain where Timothy was fall-sown. We include only named alfalfa varieties that have pleased Hoffman customers . . . no common alfalfa. The red clover portion offers better disease resistance and yieldability than ordinary red clover. See your Hoffman Seed Man.



A. H. HOFFMAN SEEDS, INC.

Located in the Heart of Lancaster County
LANDISVILLE, PENNSYLVANIA 17538

ALFALFA • CLOVER • FORAGE • HAY • PASTURE • FUNK'S G HYBRIDS

Try A
Classified —
It Pays!

The increase is reported necessary to handle the increased costs of the new system.

Robert Hess, a state DHIA director, reported that the state just this month began operating the new system.

In other action directors discussed the annual meeting scheduled for January 19. Discussion included annual recognition of herds with high milk yields.

Some members indicated that the recognition should be based on volume of milk production rather than the present butterfat

system. But it was decided that no change will be made this year.

It was reported that the county DHIA average per cow in 1969 was 12,478 pounds of milk and 487 pounds of butterfat.

This compares to the 1970 oper-

ating year average of 12,598 pounds of milk and 489 pounds of butterfat.

Members voted not to change the \$500 ceiling on the testers' bonus.

The directors voted a donation to the Pastow Memorial Fund.

Order Your CHRISTMAS GIFTS NOW

- | | |
|----------------------|--------------------------|
| Candles | Onieda Stainless Cutlery |
| Noritake China | Carpenter Tools |
| Franconia | Gift Glassware |
| Sunbeam Appliances | Builders Hardware |
| Warm Morning Heaters | |

HOME APPLIANCES

Carl & Parke Groff

149 E. Franklin St.

New Holland, Pa.

Command Performance

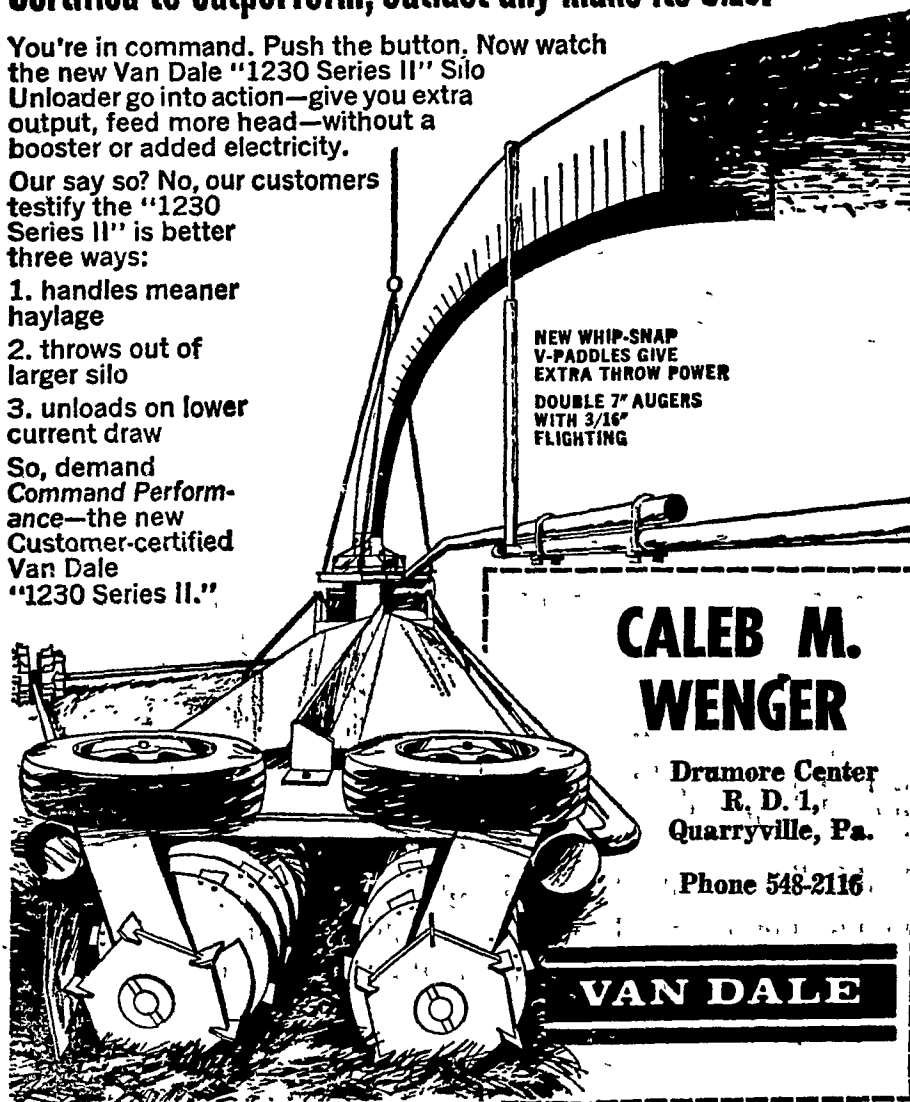
New Van Dale "1230 Series II" Silo Unloader Customer-Certified to outperform, outlast any make its size.

You're in command. Push the button. Now watch the new Van Dale "1230 Series II" Silo Unloader go into action—give you extra output, feed more head—without a booster or added electricity.

Our say so? No, our customers testify the "1230 Series II" is better three ways:

1. handles meaner haylage
2. throws out of larger silo
3. unloads on lower current draw

So, demand Command Performance—the new Customer-certified Van Dale "1230 Series II."



CALEB M. WENGER

Drumore Center
R. D. 1,
Quarryville, Pa.

Phone 548-2116

VAN DALE

WHY RE-TIE ANOTHER BALE?

The twine with the extra high knot strength



**EXTRA
HOLLAND
BALER
TWINE**

- the ball with the wooden plug
- 9,000' and 10,000'

Made from No. 1 East African fiber —
The finest available
ORDER NOW & PAY NEXT YEAR

P. L. ROHRER & BRO., INC.

SMOKETOWN

Phone Lanc. 397-3539