

16 Chester Co. Farms Set Open House

The Chester County Farm Association will hold an open house tour during Farm City Week.

The open house will run from 1 to 4 p.m. Saturday and Sunday, November 21 and 22.

The locations which will be open are the following:

Floyd Milk — A family operated dairy farm. A pipeline milker is used to 50 head of Holstein cows. Located on Route 23 one-half mile east of Seven Stars Road.

MY FIFTH FARM — 50 head of cows and 100 head of pigs in a modern barn with automatic feeding system in barn pipeline milker. Located near Jones Moore Co. on Bridge Street, extension Spring City.

Kolb Farm — Owned and operated by the Roy S. Kolb family. 56 cows stabled in totally enclosed and insulated free stall barn. Cows milked with pipeline milking system. Located on Kolb Road between Baptist Church Road and Saylor's Mill Road near Parker Ford.

Ledeier's Greenhouses — Owned and operated by Herman Ledeier and sons, Herman Jr. and Karl. Specializing in carnations as cut flowers for the whole sale market also holiday potted plants, poinsettias, geraniums and lilies. Family operation begun by Herman Sr. and now being run by sons. Located on Wells Road east of Route 724 at Parker Ford.

Robert Hindle — East on Cedarville Road from Route 100. Modern house farm with facilities for about 30 houses.

Margaret Jacob — Commercial goat farm. One mile east of Harmonyville on Harmonyville Road near Murphy Game Farm. About 40 head. This herd is comprised of all five dairy goat breeds.

Fainope Orchards — Owned and operated by Robert P. Barderson. Eighty-five acre farm. Apples, peaches, cherries and strawberries are found here. Located at the intersection of Routes 352 and 926.

Burton O. Smith Inc. — Wholesale greenhouses specializing in chrysanthemums. Located east of Route 82 between Unionville and Mailbois.

Bainard Orchards — Richard and Samuel Bainard. Orchards and greenhouses with 74 acres containing 2700 apple and peach trees. Carnations and snap dragons in greenhouses. Located two miles north of Unionville on Route 842.

Lawrence Spencer Jr. — Mushroom rooms 50,000 square feet of growing area. Glen Willow Road about one mile east of Route 1.

Walmooie Farms, Unit No. 2 — A cow barn converted to a modern calf raising barn with controlled humidity. Individual stalls for calves to three months of age. Four pens for larger calves according to age.

Donald Speakman — Modern dairy farm with new milking parlor and milk house. Holstein cows. One-half mile north of Chatham on Route 41.

Ar-Joy Farm — Modern dairy farm with pipeline milker. Owned and operated by Mr. and Mrs. Arthur D. Heishey. This farm consists of 43 milk cows and 32 replacement heifers. It is located on Hypoint Road west of Route 10 at Cochranville. Visitors are welcome to watch the milking after 4 p.m.

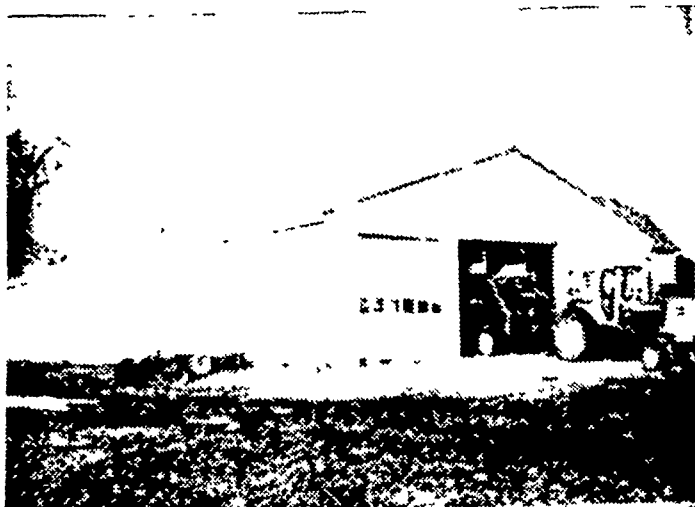
Peaceful Acres Farm — David King is owner. Open on Saturday only. 125 acres of potatoes. Large storage barn with controlled humidity and temperature. Most

of town to chips. Gladys for Gumbree Stables — Thoroughbred parrot to make. To be bred to farm for sale on Dabyle Road. One horse, harness and hound mile south of Cochranville. Also in this section. Poly on the Market in sales weather permitting. Val for on view. Owned and operated by Mr. and Mrs. John K. head of Holstein cattle. Upright silo feeds haylage inside. Lazy Susan feeder outside feeds corn. Paul J. Kin and Sons — With large Maternity pens. Located on Steckville Road, second hand barn now has 78 stalls, with 125 head left. This barn is left.

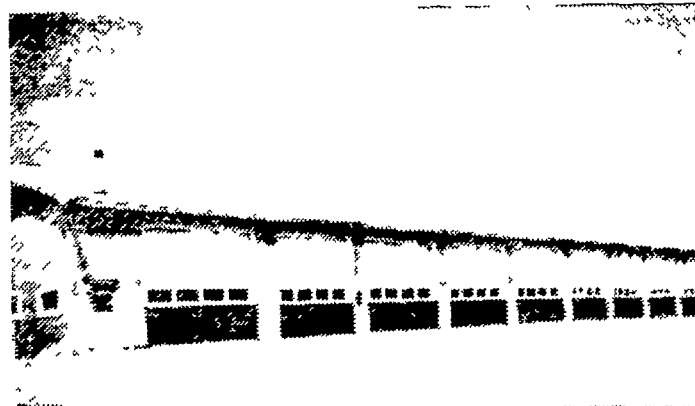
AGWAY

AGWAY PRE-ENGINEERED BUILDINGS FOR AGRI-BUSINESS and COMMERCIAL USES

An Agway building to match your individual requirements



Farm equipment represents a growing investment. Keeping it in "ready-to-go" condition calls for the proper shelter to aid your maintenance program. Agway has the layout and size to match your equipment storage requirement . . . and the door design to give you the accessibility you want.



The tested construction techniques Agway has perfected for farm buildings are also an economical way to provide space for many commercial operations, such as garages, repair shops, warehouses, freight sheds.

CORN CRIBS
WHILE SUPPLY LASTS!
750 and 1100 Bushel

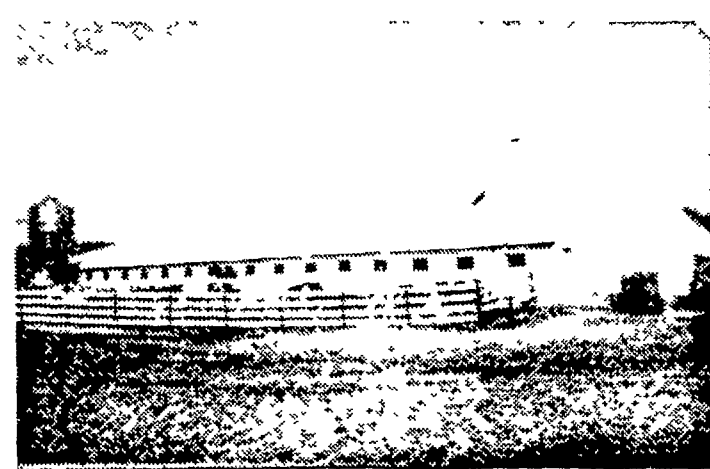
Send coupon for more information on buildings

I would like more information on:

- Dairy buildings
- Poultry buildings
- Horse buildings
- Equipment storage buildings
- Crop storage buildings
- General-purpose buildings
- Commercial buildings
- Garages
- Agway Financing Plan



Agway functions as the general contractor, taking the entire burden off your shoulders and allowing you to concentrate on what you know best — your own business. Under this system, you have only one person to deal with: Agway. Shown above is a construction supervisor, who makes sure your building is erected according to plans.



The first criteria of the Agway building is meeting your operational objectives, whether it is a livestock shelter or a utility building. The second benefit assured by Agway building service is the combination of quality materials and tested construction technique that will assure a trouble-free building for generations.

Name Student

Address Post Office

County State Zip

Send to:

AGWAY, INC.
Lancaster Supply Center
1027 Dillerville Road Lancaster, Pa. 17603
or Call 717-397-4761
Ask for Fred Kerlin or Harold Kinsey
Farm Systems Salesman

Garden Spot Unit Annual Meeting — Mon. eve, Nov. 16 — 7:30 p.m. — Farm & Home Center