

PUBLIC SALE REGISTER

TUES NOV. 10 — 12:30 P.M. Early Fall Holstein Sale at Carl Diller Farm on Route 222, 7 miles south of Lancaster, 6 miles north of Quarryville, Penna. Sale by Carl Diller and J. J. Stoltzfus, Everett Kreider, Auctioneer, Diller, Pedigrees

THURS NOV. 12—12:30 Noon P. B. Guernsey Dispersal at the Ass'n Sales Pavilion, 6 mi E of Lancaster on Rt. 30 Sale managed by The Pa Guernsey Breeders' Ass'n P. O. Box 458 Camp Hill, Pa. 17011

FRI NOV 13 — 8 P.M. Public Auction of 75 Reg and Top Grade Holstein Dairy Cattle to be held in the dairy barn arena at the Aberdeen Sales Co. in Churchville, Harford Co., Md located on Md Rt. 22, 6 mi east of Bel Air, Md Sale by Aberdeen Sales Company, Sale Managers

FRI. NOV. 13—1:30 P.M. Special Sale of Feeder Cattle and Calves and Pre-Conditioned Steer Calves at Blue Ridge Livestock Sales, Inc., Charles Town, W. Va.

SAT NOV 14—11 P.M. Public Sale of Cattle and Machinery located 15 mi W of Montrose, Pa. 4 mi N of Lawton, 20 mi So of Vestal, N.Y. and 1 1/2 mi. W from Rt 267 Sale by John (Jack) and Louise Curley, Montrose R D #5, Pa Reuel Downer and Watson Dayton, Auctioneers

SAT. NOV 14—12 Noon Public Sale of Farm Equipment, implements and household goods located at the west end of Blue Ball along Route #23 Terms by Clayton S. and Anna Mary Zimmerman Sale conducted by Martin, Auctioneers. Phone 717-354-6671

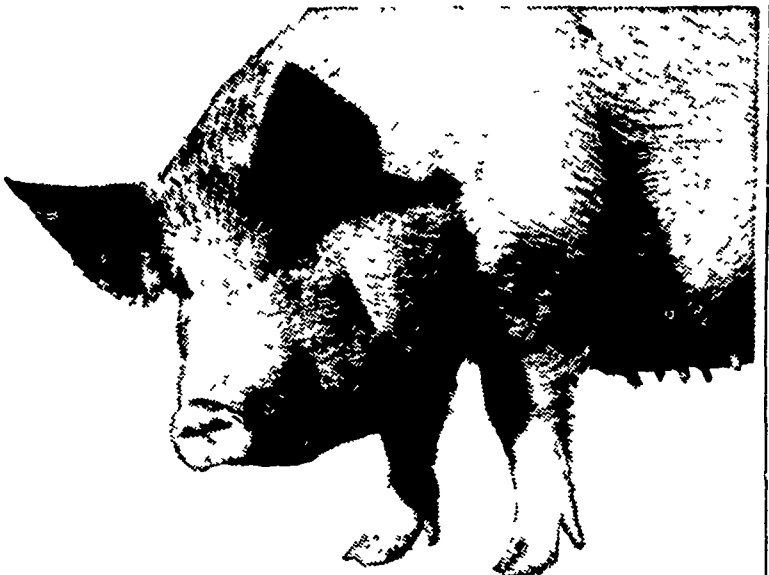
FRI. NOV. 20—1 P.M. Fall Feeder Sale at the Lancaster Union Stock Yards Sales Pavilion, Lancaster, Penna.

FRI. NOV. 20—7 P.M. Special Fall Feeder Sale at the Vintage Sales Stables, Inc., Paradise Penna.

FRI. NOV. 20 — 1 P.M. Public Sale of Real Estate, 272 Acre Huntington Co Farm located midway between Mount Union and Three Springs, or about 3 miles northwest of Shirleysburg, Cromwell Township Sale by Helen L. and James E. Smith Jr., Howard Shaub, Auctioneer.

SAT. NOV. 21—All Pony Sale. Martin's Sale Stables, Blue Ball, Pa Paul Z. Martin, 717-354-6871

SAT NOV 28—10 A.M. Public Sale of personal property, antiques and tools located on Hackman Road, midway between Brunnerville and Clay. Sale by Howard C. Hess, Stone and Kilmer, Aucls



PURINA® FARROWING CHOW®

Bulky-Laxative-Palatable

Farrowing Chow was built specifically to give your sows that extra help they need at farrowing time.

- 1) It's the kind of bulky, laxative ration sows need just before and after pigs come.
- 2) Sows like it, go for it... at a time when they are often "finicky" eaters.
- 3) It's highly fortified with extra vitamins and minerals sows need at farrowing time.
- 4) Farrowing Chow FZ contains nf-180*, which helps control scours in baby pigs.
- 5) It's a complete ration... easy to feed and store.
- 6) It's the result of five years of testing on sows at the Purina Research Farm.

Give your sows every chance to farrow big litters and get 'em off to the right start.

Give them the "built-in" advantages of Purina Farrowing Chow. Available now at our store.

*Reg trademark—Hess and Clark

- | | |
|---|---|
| John J. Hess, II, Inc.
Ph: 442-4632
Paradise | James High & Sons
Ph: 354-0301
Gordonville |
| Ira. B. Landis
Ph 394-7912
1912 Creek Hill Rd., Lanc. | John B. Kurtz
Ph: 354-9251
R D 3, Ephrata |
| West Willow Farmers Assn., Inc.
Ph: 464-3431
West Willow | Wenger's Feed Mill Inc.
Ph: 367-1195
Rheems |



PRIVATE SALE

4 miles northwest of Lebanon, 1 mile north of Cleona and Rt. 422

40 REGISTERED CANADIAN COWS AND HEIFERS 40

2-3-4-5 year olds
Fresh and Close Springers
Milking up to 75 lbs. per day
Some due November and December

They are sired by Hamilton Unit Sires

If in need of more milk, we have a good Selection of cows

Call for appointment
RUSSELL HEILMAN & SON
Route #4, Lebanon, Pa. 17042
Telephone 717-867-1625

PROFILE OF POWER: REMINGTON



THE "GOOD LIFE" is better when you own a Remington light-weight SL-9 chain saw—compact enough for anyone to handle. It's an ideal saw for campers, hunters, fishermen, homeowners, farmers, and outdoorsmen everywhere. If you've always wanted a chain saw, but haven't gotten around to buying one, the SL 9 is just the saw you've been waiting for. It's light, it's powerful, it's warranted for two years or 24,000 trees, whichever comes first. It's designed for YOU. Come in and see the SL 9 today.

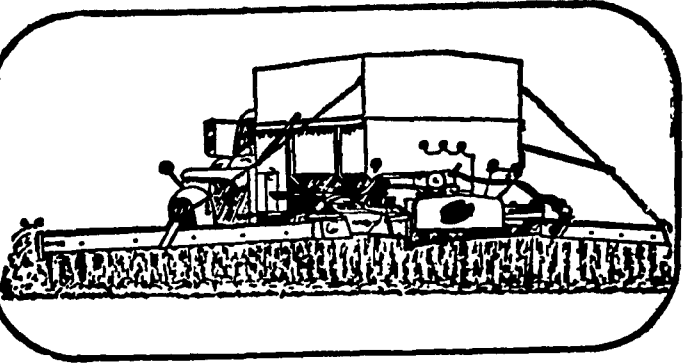
REMINGTON DESA
OUTCUTS, OUTLASTS 'EM ALL!

GEHMAN BROS.

SALES & SERVICE
Chain Saws Our Specialty
1 Mile North of Terre Hill on Route 897
East Earl, R D 1 Penna
Phone 215-445-6272

For Full Market Reports
Read Lancaster Farming

Apply Lime In The Fall For A Better Crop Next Summer



Fall liming assures proper limestone distribution in the soil, ready for spring planting. The freezing and thawing of winter aid in the process of limestone dissemination. So, why wait, correct your soil deficiency now by liming, and reap a bigger harvest next summer.

MARTIN'S LIMESTONE

Blue Ball, Pa. 354-4125 Gap, Pa. 442-4148

NOW! Prepare For Seeding

Call us for prompt service on:
LIMESTONE - Truck Spread Fast Service
FERTILIZER - 0-20-20
10-10-10 5-10-10 4-16-16

And many other bulk blended analysis.
Available in bags, bulk
Trailer spreaders or custom truck spreading.

Combine Rye and Fertilizer for single application.
REMEMBER US FOR ANHYDROUS AMMONIA AFTER FALL PLOWING!

Don't forget to top dress alfalfa this fall
Available:
0-26-26, 0-18-36
Boron and Magnesium can be added



ORGANIC PLANT FOOD CO.
GROFFTOWN RD., NEXT TO WATERWORKS
Ph. 392-4963 or 392-0374
YOUR FULL SERVICE DEALER