

Pa. Milk Board Releases Annual Dealers Report

The Milk Marketing Board recently announced that the sales of fluid and milk products reported by Pennsylvania's Fluid Milk Dealers in 1969 were \$651 million, an increase of \$21 million over 1968.

The cost of products sold by the fluid milk dealers was \$376 million, 57.74 per cent of the total sales, while net profits after taxes amounted to \$87 million, 1.34 per cent of total sales.

There were 281 Fluid Milk Dealers reporting in 1969, 23 fewer than in 1968. In addition to increased sales in 1969, the cost of products sold increased

Pa. Conservationists Ponder Future With New Environment Dept.

(Continued from Page 13) including 4-H, FFA and Boy Scouts. If the grant is not reinstated, Stauffer said, these programs will have to be curtailed.

He noted, however, that negotiations are still underway with Sears to devise a program more suitable to the firm. He said Sears has indicated the need for a program with more of an urban orientation.

While the overall content of \$118 million and net profits increased by \$853,513

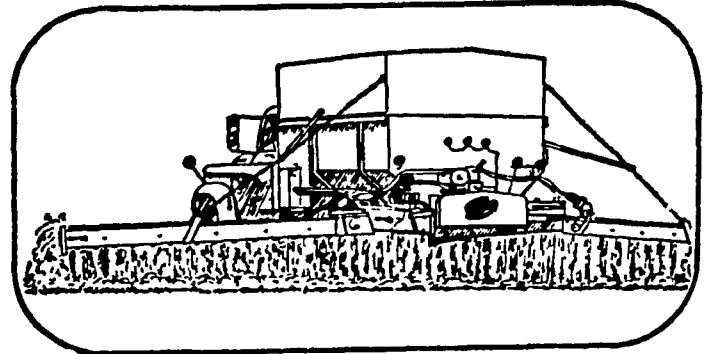
next year's youth program is undecided, he said, the FFA public speaking contest will be continued next year.

He also reported that it was generally agreed at the meeting that there is a need to find ways of stopping construction on flood plains.

At the conference Stauffer moved up from second vice president to first vice president of the Pennsylvania Association of Soil and Water Conservation District Directors. He is slated to become president next year.

For Full Market Reports Read Lancaster Farming

Apply Lime In The Fall For A Better Crop Next Summer

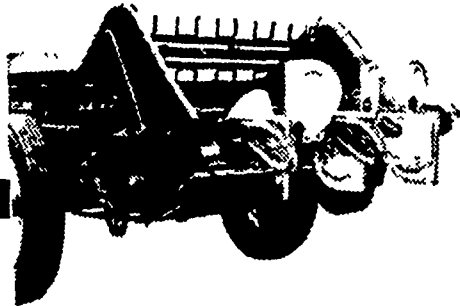


Fall liming assures proper limestone distribution in the soil, ready for spring planting. The freezing and thawing of winter aid in the process of limestone dissemination. So, why wait, correct your soil deficiency now by liming, and reap a bigger harvest next summer.

MARTIN'S LIMESTONE
Blue Ball, Pa. 354-4125 Gap, Pa. 442-4148

EXTRA STRENGTH

WHERE YOU NEED IT MOST!



Famous "Cyclon-Action" design gives you efficient, fast spreading. You can spread as light or as heavy as you wish.

New Holland offers the extra-strength features you need in a spreader to protect against "down time". An apron chain that withstands more than twice the pull of ordinary chains. Extra-tough, heat-treated paddles and longer hitch channels.

If you can't afford a breakdown, you need a New Holland spreader. Capacities range from 110 to 275 bushels in a choice of triple-beater and single-beater models. See us soon!

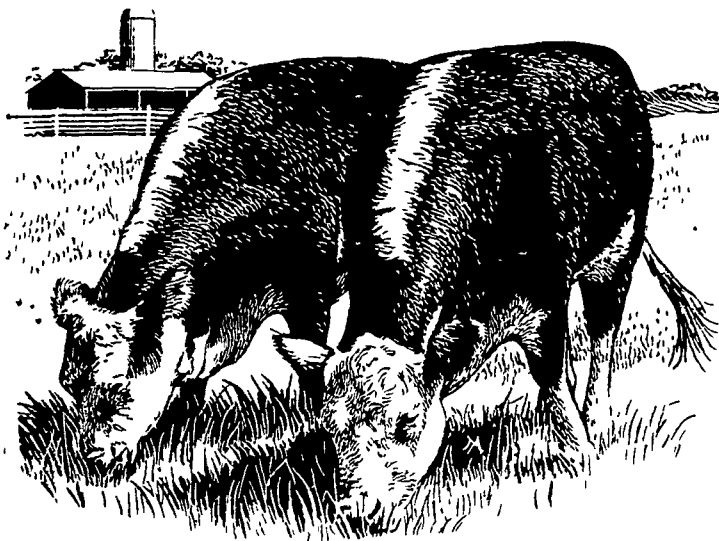
C. E. WILEY & SON, INC.

101 So. Lime Street

Phone 786-2895

Quarryville, Penna.

Get your steers uniformly on feed with RED ROSE BEEF STARTER PELLETS



When cattle arrive on your feedlot . . . feed them right from the beginning with Red Rose Beef Starter Pellets for three weeks — to get them uniformly on feed. Then follow the Red Rose Programmed Beef way of raising steers.

RED ROSE BEEF STARTER PELLETS is a roughage blended with vegetable proteins, non-protein nitrogen, molasses, minerals, vitamins, and a "low appetite stimulating level" of chlorotetracycline. The high vitamin A level in these pellets will guard against infections during colder weather. Beef Starter Pellets is only one of a number of Red Rose Programmed Beef Feeds — all designed to help you raise steers better.

Why don't you aim to make more money from your steers this season by feeding the Red Rose Programmed Beef way? Call us . . . and we'll explain how you can do it!

Walter Binkley & Son
Lititz

Brown & Rea, Inc.
Atglen

Elverson Supply Co.
Elverson

L. T. Geib Estate
Manheim

I. B. Graybill & Son
Strasburg

E. Musser Heisey & Son
R. D. #2, Mt. Joy, Pa.

Heistand Bros.
Elizabethtown

Red Rose Farm Service, Inc.
N Church St, Quarryville

David B. Hurst
Bowmansville

G. R. Mitchell, Inc.
Refton, Pa.

Mountville Feed Service
Mountville

Musser Farms, Inc.
Columbia

Musser's Mill
The Buck

Chas. E. Sauder & Sons
Terre Hill

Ammon E. Shelly
Lititz

E. P. Spotts, Inc.
Honey Brook

H. M. Stauffer & Sons Inc.
Witmer

TROJAN country!

Where we've already tested the corn you'll plant next spring.

See your Trojan dealer now for the right combination of full, medium and early season varieties for your corn planting program—all pre-tested at our research farm in Hawaii!

Full Season	Medium Season	Early Season
TXS-122	TXS-108	TXS-85
TXS-115	TXS-102	M-90



The seed corn specialists

TROJAN SEED COMPANY

Trojan Hybrids are available at the following dealers

- FARMERS SUPPLY CO. Lancaster
- ZIMMERMAN'S ANIMAL HEALTH SUPPLIES R. D. Lititz
- LANCASTER BONE FERT. CO. Quarryville
- F. M. BROWN'S SONS, INC. Sinking Spring
- MARTIN FEED MILL Ephrata
- ANDERSON FEED & GRAIN R. D., Oxford
- BOMBERGER'S STORE Elm
- H. H. GOOD MILL Fivepointville
- GEHMAN FEED MILL Denver
- E. H. KEEN & SON Atglen
- WEAVER FIX-IT SHOP R. D., New Holland

DISTRIBUTED BY
STANFORD SEED COMPANY
Plymouth Meeting, Pa. 19462