

Weekly Poultry Report Green Dragon

Eastern Pennsylvania And New Jersey

Prices unchanged on light type hens. Demand for good from processors a plants is equally at or near capacity. Offerings ample as producers moving old hens to prepare for new pullets. Plants in instances refusing offerings as they are generally booked full for the next two weeks. Offerings of heavy hens barely adequate for a fairly good demand. Occasional flocks over 7 lbs noted moving at 12c. Prices paid at farm: Light type hens 4-5³/₄c mostly 5¹/₂c in Pennsylvania, mostly 4¹/₂c in New Jersey. Heavy Type Hens 7fwer.

plants failed to kill estimated number due to labor shortage yesterday. Less than trucklot prices trended higher within unchanged ranges in instances. Advance interest quiet with traders awaiting further market developments. Live supplies continue ample and heavier than desired. Undertone firm but cautious in instances.

Pool trucklot prices for Thursday arrival in the New York area.

US Grade A 27 28¹/₂ mostly 27¹/₂-28.

Plant Grade 26-27¹/₂ mostly 26¹/₂.

Special packs including 1³/₄-2, 3¹/₂ # sizes 7fwer.

Fogelsville

(Prices paid dock weights, cents per pound, except where noted)

HENS, Heavy Type 5-14: PULLETS 10-36, mostly 20-25; ROASTERS 12-30, mostly 18-25; DUCKS 8-30¹/₂, DRACKES 8-38, mostly 37-38; RABBITS 11-30, mostly 18-26; GUINEAS 69-75; PIGEONS (Pei Pau) 95-115, mostly 95-115

TOTAL COOPS SOLD 664

Buying A Home Freezer

Economy is seldom one of the many good reasons for buying a freezer, reminds Harold E. Neigh, extension consumer economics specialist, The Pennsylvania State University. Savings must be made on the original cost of the food to be stored to offset the operating cost. Too many families use a freezer as a savings account instead of a checking account. To get the lowest cost storage per pound, the freezer should be filled three times a year.

Delmarva

Ready-to-cook movement good with occasional unfilled orders reported as several

HAY PRICES

For Southeastern and South Central Pennsylvania

October 12, 1970

All hay No. 2 and better, prices paid by dealers at the farm, price per ton.

Hay and Straw steady to strong.

Alfalfa 28.00-40.00, few sales to 45.00
Timothy hay 20.00-28.00
Mixed hay 24.00-35.00
Straw 25.00-30.00, few sales to 35.00
Mulch 12.00-20.00

Reported by Bureau of Markets Pa. Dept. of Agriculture.

Federally Inspected Livestock Slaughter

For week ending October 15, 1970

	Cattle	Hogs	Sheep
Week to date	471,000	1,331,000	164,000
Same period last week	479,000	1,309,000	161,000
Same period last year	479,000	1,252,000	162,000

Estimated daily livestock slaughter under Federal Inspection

The Green Dragon market reported receipts of 140 head of average quality cattle Friday, October 9 well attended prices strong.

Consignments included Mixed load of Canadian and Wisconsin cows — fresh, 500 00 - 590 00, springers, 475 00 - 550 00

Load of Canadian cows — fresh and springers, 450 00 - 600 00

Load of Maryland springers — 345 00 - 505 00

Load of mixed cows and heifers — fresh, 370.00 - 510.00, first calf heifers, 360 00 - 490 00

Load of Cumberland Co cows — 350 00 - 465 00

Load of bred heifers — 200 00 - 277 50.

Local yellow cows — 227 50 - 317 50.

Open heifers — 140 00

HAY MARKET OCTOBER 9 10 loads hay, including: alfalfa, 32.00 and 43.00; timothy, 34.00; mixed hay, 30.00-35.50; one load at 39.00.

Few loads straw, 32.00-40.00.

One load ear corn, 46.00.

Lanc. Auction

(Continued from Page 2)

FEEDER STEERS — Load Choice and Prime 940 lbs with Good to low-Choice slaughter finish 29 50

CALVES — Vealers about steady.

VEALERS — Choice 48 50-50 50, couple 51 50-53 50; Good 44 00-48 50, Standard 39 00-45 50, Utility 33 00-40 00, Cull 80-120 lbs 25 00-30 00.

SLAUGHTER CALVES — Good and Choice 270-350 lbs 30 00-36 00

CALVES RETURNED TO FARM — Bulk 90-115 lbs 34 00-40 00

HOGS — Barrows and Gilts weak to 50 lower

BARROWS AND GILTS—US 1 200-230 lbs 20 50-21 00, US 2-3 210-260 lbs 19 35-19 60, US 2-3 190-210 lbs 18 85-19 10

SHEEP — Few Good 75 90 lbs Woolled Slaughter Lambs steady at 24 00-26 00, one lot Utility 75 lbs 20 75

Weekly UEP Egg Market

Prices to the Producer

Tuesday, October 13 and Thursday, October 15

Region	Large	Medium	Small
Northeast	32 30	21 20	18 18
Northwest	27 27	21 21	10 11
Central West	26 25	20 19	9 9
Southwest	26 25	19 19	10 9
Midwest	28 27	20 19	14 13 ¹ / ₂
Southeast	28 27 ¹ / ₂	19 19	16 ¹ / ₂ 16 ¹ / ₂
National Average	29 27 ¹ / ₂	20 19 ¹ / ₂	15 15

Weekly New York Egg Mkt.

From Tuesday, October 13th to Friday, October 15th

	Mon.	Tues.	Wed	Thurs.	Fri.
WHITE					
Fcy Ex Lge.	40	38	38	38	38
Large	36	35	35	35	35
Mediums	29	27	27	27	27
Pullets	24	24	24	24	24
Peewees	16	16	16	16	16
BROWN					
Fcy Large	37	35	35	35	35
Mediums	Unquoted				
Pullets	Unquoted				
Peewees	Unquoted				
Standards	32	31	31	31	31
Checks	21	20 ¹ / ₂	20 ¹ / ₂	20 ¹ / ₂	20 ¹ / ₂

Tone Market position irregular with offerings of mediums improved at points, but overall supply still ample.

Copyright 1970 by Urner Barry Publications

New York Eggs

Vintage

(Continued from Page 2)

Prices continue on the weak side stimulated by increased arrivals and offerings of eggs on a consignment basis. Trading stocks generally ample to excessive on all sizes and colors. Demand no better than fair although there was some additional buying of low priced offerings against end of week needs. Most street sales of extra large noted at 37 cents large browns at 33 35 cents and No 1 large whites (From future deliveries) at 31 33 cents mostly 31 32 cents. Carton orders steady at slow to fair levels and lacking any aggressive promotional activity in the local news media.

CALVES RETURNED TO FARM — Bulk 90-115 lbs. 34 00-43 00, few Holstein Heifers 45-00-50 00.

HOGS 514 — Barrows and Gilts 100-150 lower.

BARROWS AND GILTS — US 1 210-230 lbs 20 75-21 00, US 1-2 195-235 lbs 20 35-20 60, US 2-3 190-250 lbs 19 50-20 10, One lot US 3 4 267 lbs 18 75, Couple lots US 3-4 275-280 lbs 17 00-17 50

SOWS — US 2-3 325-550 lbs. 14 00-14 75.

SHEEP — Market not reported

Fat Hog and Feeder Pig Sale Sat., October 10, 1970

HOGS 644 — Barrows and Gilts mostly \$1 to \$1 25 lower. US No 1-2 210-225 lbs 21 10-21-60, US NO 2-3 200-235 lbs 20-25 20 85, US No 2-4 190-260 lbs. 19 75 20 25, US No 3 4 250-300 lbs 17 60-19 60, US No 2 4 120-180 lbs 15 00-18 25

SOWS — US No 2 3 345-575 lbs 14 50-16 00

BOARS — 11 00-13 35

Lanc. Market

(Continued from Page 2)

51 00, including several 220-260 lbs Good 45 00-49 00 Standard 41 00 46 00, Utility 32 00-41 00; Cull 90 120 lbs 28 00 32 00

HOGS — Barrows and Gilts mostly 1 00 lower. Sows scarce

BARROWS AND GILTS—US 1 200-235 lbs 21 00-21 50, US 1-2 195 240 lbs 20 25-20 50, US 2-3 190-260 lbs. 19 25-20 00, US 3-4 260-280 lbs. 18 25-19 25

SHEEP — Slaughter Lambs 50 lower. Ewes not established.

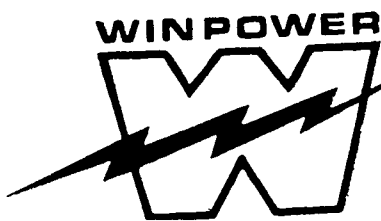
WOOLED SLAUGHTER LAMBS — Choice 65-90 lbs. 26 50-28 00; Good 23 50-26 50; Utility 20 00-24 00

Robert K. Rohrer

Bulldozing - Grading Patz Sales & Service

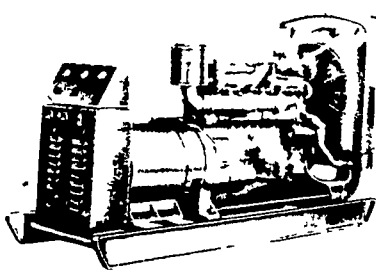
Barn Cleaners - Silo Unloaders - Cattle Feeders

Quarryville, R. D. 1
Hensel 548-2559



Stand-By or Continuous Duty Alternators & Controls

BRUSHLESS EXCITATION 6 KW thru 125 KW



GASOLINE - GAS - DIESEL - GENERATING SETS FOR:

- Dairy Farms
- Poultry Houses
- Hatcheries
- Fire Departments
- Industrial Plants
- Residential
- Anywhere Stand-By Power Is Needed

We design and install complete Automatic Systems We Service and Repair any make Generator.

Also offer Preventive Maintenance on a contract basis to keep your generator in sure running condition

Specialists in Electric Power Generating Equipment



ELECTROMECH

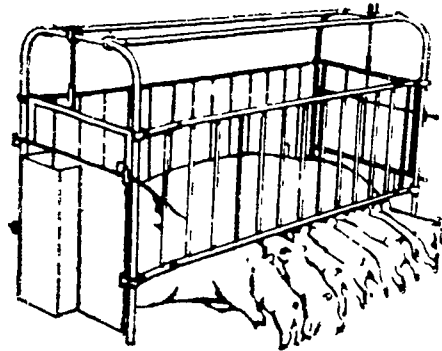
Electromechanical Service
Route 222, Ephrata, Pa. 17522
Phone (717) 733-7911

Electric Motor ● Generator ● Power Tool Specialists

Counties Served

Lancaster Berks Lebanon Dauphin Schuylkill

HUDSON PROFI-MATIC FARROW PENS



ADJUSTABLE WIDTHS; High Carbon Steel Frames

For heavy use — hold nervous gilts up to largest of sows. "Railroad steel" frames spring back when others fold up. Sides adjust to make 22, 24 or 26 inch pen widths. Use singly, or join with panels for row-type installation.

WE SELL, SERVICE AND INSTALL

E. M. HERR EQUIPMENT, INC.

R. D. 1, Willow Street 717-464-3321

