

# Earl M. Weaver Named Ammon Predicts Outstanding IPIE

(Continued from Page 1)  
cent of his earnings went to help meet family expenses.

Now Weaver is using his entire earnings plus a scholarship to finance his college education. At the present time Weaver is working on a Bachelor of Science Degree in animal husbandry at Delaware Valley College. On completion of that degree he plans to enter Pennsylvania State University to pursue graduate studies in agricultural education. His ultimate goal is to teach vocational agriculture in the United States or overseas.

In 1964 Weaver was elected President of the Upper Bucks Tech FFA Chapter, an office he held for three years. The job

as chapter president paved the way for the State Presidency which he held in 1967-68.

During his four years of high school Weaver was on numerous committees and participated on the Dairy and Land Judging Teams, earning awards at both district and state levels.

He has been a public speaking winner at district, state, and regional speaking contests.

Weaver has been active in his church youth fellowship and at the present time is vice president of his class at Delaware Valley College.

## ● Composite Report (Continued from Page 2)

22 50 23 35, with five head 23 75-24 10 Cutter 19 75-22 00, Canner and low-Cutter 17 75-20 10

**BULLS** — Choice 28 25-29 75, few 30 00-30 75 with five head 31 60-32 35. Good 26 25 28 50. Utility and Commercial 26 00-29 00, few 29 50-30 50, around ten head 30 85-31 85. Cutter and low-Utility 900-1075 lbs 23 00-25 50

**FEEDER STEERS** — Around four loads Choice and Prime 925-1025 with Good to low-Choice slaughter finish 29 00-29 75, load 850-875 lbs, 30 10-30 50, Choice 800 960 lbs 28 25-30 75; mixed-Good and Choice 750-1050 lbs 27 25-28 50

**VEAL CALVES** — Vealers mostly steady, instances 2 00 lower; Calves returned to farm mainly steady, instances 5 00 lower on last week's sharp advance on Holstein Heifers

**VEALERS** — Choice 48 50-52 50, few head 52 50-54 00, Good

Using advance registrations as a yardstick, International Poultry Industry Exposition (IPIE) officials are predicting a record turnout during the four day event scheduled for the Cincinnati Convention and Exposition Center, Oct 26 29.

This year's exposition, co-sponsored for the first time by Northeastern Poultry Producers Council (NEPPCO) and the Poultry Industry Manufacturers' Council (PIMCO) is destined to be the most successful in the show's three-year history, according to Richard I Ammon, general chairman.

Among the factors expected to produce the record turnout are the central location, a superb educational program, the record number of commercial exhibits, involvement of 2,500 industry men through a survey asking their help in planning the show, encouragement of advance registrations by selecting the winner of a vacation trip for two from early registrants, and a strong public relations program to acquaint the industry with the exposition.

45 00 50 00 Standard 39 00-46 00, Utility 33 00-40 00 Cull 90-120 lbs 29 00-33 00, 65-85 lbs 24 00-29 00

**CALVES RETURNED TO FARM** — Bulk 90-115 lbs 34 00-43 00, few Holstein Heifers 45 00-50 00

**SLAUGHTER CALVES** — Good and Choice 270-350 lbs 30 00-36 00

## ● U.S. Farm (Continued from Page 1)

he actually urged a \$20,000 limit. In the final vote, he voted against the overall federal farm program, however.

Second, a so called "set aside" program would replace the old land retirement program. Whereas past programs have

required leaving a certain portion of the land idle, the new program would allow farmers to produce crops on the diverted acres - so long as certain crops specified as being in overproduction were not put on the diverted acres.

This would make it possible for the farmer to participate in the federal farm program and still utilize all his farm land.

## GAS LITE NAPHTHA

We have a very satisfactory fuel for gasoline lanterns, and can save you money in barrel lots.

We deliver with tank truck and pump it into your tank.

Also tank truck delivery of home heating oils, kerosene, diesel oil, gasoline for trucks and tractors, etc.

## OIL SPACE HEATERS Large Oil Storage Tanks

**W. L. ZIMMERMAN & SONS**  
Dial 717-768-3131  
Intercourse, Pa.

# Southeastern Penna. FARM TRACTOR PULL

## Open Competition

All Classes

AT

## Rough & Tumble Museum

Rt. 30, 13 mi. east of Lancaster

# October 24, 1970

8 A.M. - 5 P.M.

All Farmers and Dealers are urged to bring their tractors and participate. All Modern Equipment.

Scored according to the National Tractor Pulling Assoc. Rules.

## CALL Elmer Beiler



COME IN! SEE THE NEW 1971 LAWN-BOY MOWERS TODAY.

## CLEARANCE SALE

## MOWERS

At Extra Discount

LAWN-BOY — HAHN ECLIPSE

## CALL Titus Burkholder

1 - 425 Esco Low Wide Model  
1 - 650 gal. Esco bulk milk tank, M.C.D. 1 N.Y.  
1 used 2 h.p. Lehigh compressor  
Milk Keeper Bulk Tanks  
12 & 7 can Star Milk Coolers  
Lehigh Refrigeration Compressors  
Klenzade Automatic Bulk Tank Washers  
NOTICE — We have been appointed stocking warehouse for Milk Keeper Bulk Tanks.

## CALL Leroy Zook

LANCASTER SILOS  
ACORN BARN EQUIPMENT  
WEAVERLINE CARTS

## CALL Chas. Eshleman

SPECIAL SALE

## WHEELBARROWS

List Price	Our Price
K-8 \$34.50	\$31.50
M-11 \$32.50	\$29.50
M-4½ \$30.50	\$27.50

## Handy Tractor Tool Boxes

Reg List Price \$7 95

## 10% DISCOUNT

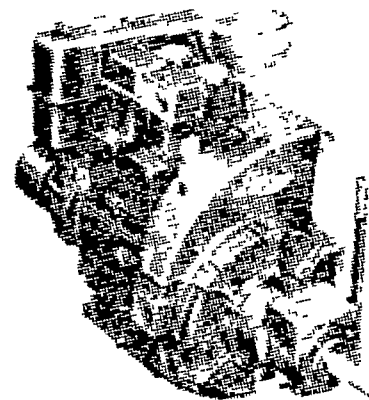
While they last

OCTOBER SPECIAL  
TRACTOR BATTERIES  
20% OFF LIST PRICE

## CALL Henry Esh

For Sales — Service — Parts

- 22 H.P. Deutz — With Clutch
  - New 7½ H.P. Slow Speed
  - Used 7½ H.P. Air Cooled Slow Speed
  - Used 8 H.P. Water Cooled
  - Used 5½ H.P. Banford
- Area Distributor for Lister Diesel Engines



## CALL Bob Kistler H.

## NEW EQUIPMENT

McCormick Mixer Grinder  
234 — 2 Row Mounted Corn Picker  
McCurry Grain Bodies  
International 544 Tractor  
2000 McCormick Loader  
826 & 1026 Diesel Tractors  
544 Farmall Diesel Tractor  
990 Mower Conditioners

## USED EQUIPMENT

F.H. 84 Gehl Single Row Forage Harvester  
A-1 Condition  
International 606 Tractor  
McCormick Corn Picker 1 P.R.  
Oliver Corn Picker single row pull  
John Deere Tractor 520 w/cultivator and  
3 bottom Plow  
300 Tractor with 3 Bottom Plow

RADIO CONTROLLED TRUCKS FOR BETTER SERVICE

# C. B. HOOBER & SON

Intercourse, Penna.

Phone 768-8231