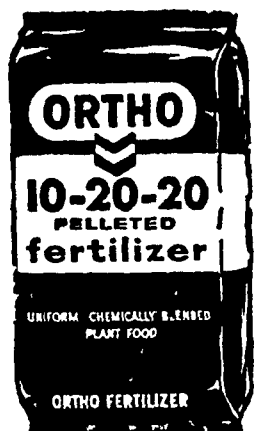


# TRY A CLASSIFIED AD!

## FERTILIZE Your WHEAT With ORTHO UNIPEL FERTILIZER



- UNIFORM COATED PELLETS — for even drilling
- CLEAN AND EASY TO HANDLE will not clog up drills
- CONTAINS FAST ACTING AND LONG LASTING NITROGEN AND PHOSPHORUS
- HIGH ANALYSIS — less handling and fewer stops while planting

OTHER ANALYSIS AVAILABLE  
20-10-10 13-34-10 16-16-16

AVAILABLE IN BULK OR BAGS

CALL TODAY AND PLACE YOUR ORDER

**P. L. ROHRER & BRO., INC.**

SMOKETOWN Phone Lanc. 397-3539

## Berks Co. FFA

The Berks County FFA officers Leadership Training Conference was held at Conrad Weiser High School at 4 p.m. October 6

Mr. Norman Dinger, high school principal, gave greetings to the FFA members and special guests

County officers gave the opening ceremony and guests were introduced

Bruce Webber, the FFA State chaplain, spoke on the abilities of leadership

One greenhand from every chapter in the county was entered in the FFA Quiz. Bill Ford of the Twin Valley Chapter won the contest.

After the evening meal, Lt. Henninger of the Pennsylvania State Police spoke on the problems facing the youth today and farm safety

One member of each chapter then spoke on an assigned subject given by Mr. H. A. Smith, area supervisor. Twin Valley's subject was chapter public speaking given by Frank Stoltzfus

After the speeches were completed, all the officers adjourned to separate rooms where one of the county ag teachers discussed the duties of their office with them

Then everyone assembled in the auditorium and one person

from each group reported on the meetings. Paul Oldham, treasurer, Robert Honberger, sentinel, Bill Ford, greenhand, Jeff Gable, greenhand, and Ronald Frederick, advisor.

The conference adjourned at 7:45 p.m.

The following members attended: Fred Mast, president; Frank Stoltzfus, vice president; Robert McGowan, secretary; Richard Kuntz, Twin Valley Chapter Reporter



## Start raising more and better Calves the Easy NURS-ETTE way

No more carrying pails of warm water or hand mixing milk replacer. Just fill the hopper of the NURS-ETTE with milk replacer and the NURS-ETTE will mix milk replacer and warm water and keep it warm until calf nurses the mix (approx. 14 oz.)

Then it will mix a fresh batch of water and replacer.

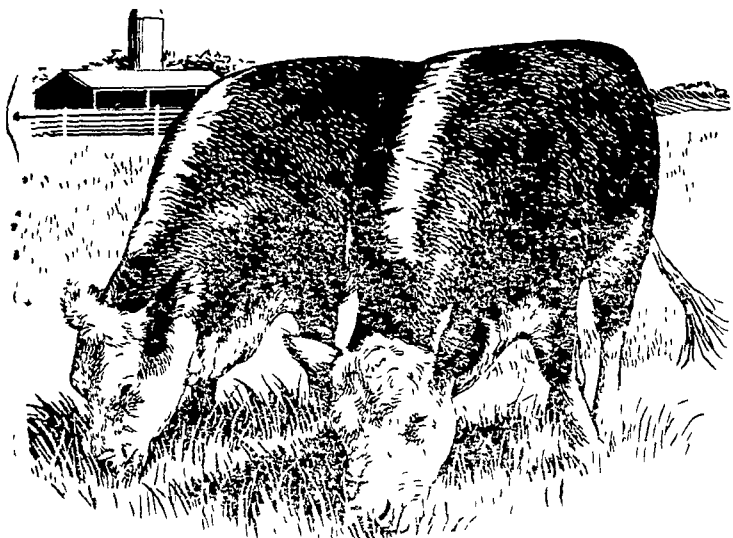
For more information contact

## YOUNG BROS.

NURS-ETTE SALES AND SERVICE

Ph. 717-548-2462  
Peach Bottom, R. D. 1, Pa. 17563

## Get your steers uniformly on feed with RED ROSE BEEF STARTER PELLETS



When cattle arrive on your feedlot . . . feed them right from the beginning with Red Rose Beef Starter Pellets for three weeks — to get them uniformly on feed. Then follow the Red Rose Programmed Beef way of raising steers

RED ROSE BEEF STARTER PELLETS is a roughage blended with vegetable proteins, non-protein nitrogen, molasses, minerals, vitamins, and a "low appetite stimulating level" of chlorotetracycline. The high vitamin A level in these pellets will guard against infections during colder weather. Beef Starter Pellets is only one of a number of Red Rose Programmed Beef Feeds — all designed to help you raise steers better.

Why don't you aim to make more money from your steers this season by feeding the Red Rose Programmed Beef way? Call us . . . and we'll explain how you can do it!

Walter Binkley & Son  
Litz

Brown & Rea, Inc.  
Atglen

Elverson Supply Co.  
Elverson

L. T. Geib Estate  
Manheim

I. B. Graybill & Son  
Stasburg

E. Musser Heisey & Son  
R. D. #2 Mt. Joy, Pa.

Heistand Bros.  
Elizabethtown

Red Rose Farm Service, Inc.  
N. Church St., Quarryville

David B. Hurst  
Bowmansville

G. R. Mitchell, Inc.  
Refton, Pa.

Mountville Feed Service  
Mountville

Musser Farms, Inc.  
Columbia

Musser's Mill  
The Buck

Chas. E. Sauder & Sons  
Terre Hill

Ammon E. Shelly  
Litz

E. P. Spotts, Inc.  
Honey Brook

H. M. Stauffer & Sons Inc.  
Witmer

## NEW! RC800 RECUTTER... versatility and speed!

New RC800 mounts on 55-inch Gehl Hi-Throw blower for high capacity recutting of haylage, high-moisture corn, low-moisture corn silage, corn stover silage and other grains and roughages. Recutter features a 22-inch wide, 24-inch diameter nine-knife cylinder. Knives are set at 60 degree angles for high capacity cutting over various size screens. Cylinder travels 1000 RPM inside 210 degree wrap of screen, exposing nearly 1000 square inches of screen area. Standard, built-in knife sharpener. Adjustable knives and cutter bar allow setting cutting mechanism up to the screen. Unit may be powered by 540 or 1000 RPM tractors.



Make us prove it with a demonstration!

FARMERSVILLE EQUIPMENT INC.  
R. D. 2, Ephrata, Pa.

N. G. HERSHEY & SON  
Manheim

CHAS. J. MCCOMSEY & SONS  
Hickory Hill, Pa.

ZOOK'S FARM STORE  
Honey Brook, Pa.