

# Ed, Kathy Donough Get Manheim Sheep Honors

The Shropshire sheep of a Manheim RD4 brother and sister took top honors in the sheep show at Manheim Fair Wednesday.

Ed Donough, 18, had the grand champion of the show with an ewe lamb and his sister Kathy, 15, had the reserve champion with a market lamb, which was first in its class.

Ed also had the top ram lamb while Kathy had the second place pen-of-three. Their parents are Mr. and Mrs. Paul Donough.

Elizabeth Herr, 10, daughter of Mr. and Mrs. Bob Herr Narvon RD1, had the first place pen-of-three. Her Cheviots swept the show at Ephrata a week ago. She also had the second place individual market lamb.

Jay Zimmerman, of Ephrata RD1, had the second place ewe lamb in breeding stock competition.

This was the largest sheep show in the history of the Manheim Fair, according to Mark Nestleroth, chairman of the



Ed Donough displays his grand championship Shropshire at the Manheim Fair.



Kathy Donough shows her reserve champion Shropshire at the Manheim Fair.

## Brenneman, Leaman Win Lampeter Fair Contests

Steve Brenneman from Penn Manor High School FFA Chapter won first place and the \$25 savings bond in the dairy cattle judging contest at Lampeter Fair last month, it was reported at the County Vo-Ag teachers' monthly meeting Tuesday afternoon.

Brenneman had 267 points to beat second place winner Earl Geihart from Ephrata High School with 262 8 points.

In the Live-stock Division Roger Leaman from Pequea Chapter was first with 335 5 points.

Ephrata was the top school in the contest with 422 5 points with a tie for second place between New Holland and Manheim with 420 6 points.

Placings were as follows Dairy Judging, Steve Brenneman

### Stauffer To Head Group At Conservation Meet

Some Lancaster County farmers will be among those to attend the annual conference of the Pennsylvania Association of Soil and Water Conservation District Directors and the State Soil and Water Conservation Commission at Williamsport October 13-15.

Heading the delegation will be Aaron Stauffer, Lancaster Soil and Water Conservation District chairman. Stauffer is second vice president of the Pennsylvania Association and is slated to move up to first vice president at the meeting, then become president next year.

At the convention, Stauffer is slated to chair a buffet breakfast at 7:30 a.m. Wednesday at which the speaker will be Leonard H. Bull, Pennsylvania Secretary of Agriculture and chairman of the State Soil and Water Conservation Commission.

Those attending the convention with Stauffer, according to Orval Bass, county conservationist, will include Amos J. J. Everett Kreider and County Commissioner Abram Dombach.

show. Twenty-four animals were entered in the performance competition while about 45 were in the entire show.

Placings: LeFever, Manheim; 3097; Ronald Bolinger, Ephrata; 3097; Doris Mar, Elizabetstown; 3096; Michael Bollinger, Ephrata; 3088; Carl D. Kreider, Solanco; 3070.

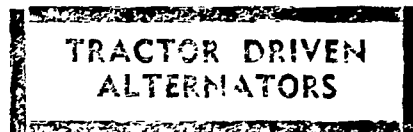
Individual: Don Thomas, Penn Manor; 584 0; Greg Landis, Penn Manor; 574 0; Earl Gerhart, Ephrata; 560 7; Mark Thompson, Manheim Central; 541 4; Carl D. Kreider, Solanco; 529 4; Bob Young, Solanco; 523 9; Wilmer Groff, Manheim Central; 522 5; Larry Ressler, New Holland; 520 0; Ken Redcay, New Holland; 517 8; Chas. Crowe, Elizabetstown; 515 3.

Live-stock Judging, Roger Leaman, Pequea; 336 5; Alvin Schlouch, New Holland; 325 3; Robert Young, Solanco; 320 2; Galen Hackman, Ephrata; 318 3; Scott Kreider, Solanco; 315 6.

All School Placing, Ephrata; 422 5; New Holland; 402 6; Manheim Central; 420 6; Elizabetstown; 417 5; Solanco; 412 7; Penn Manor; 412 2; Pequea; 399 2.

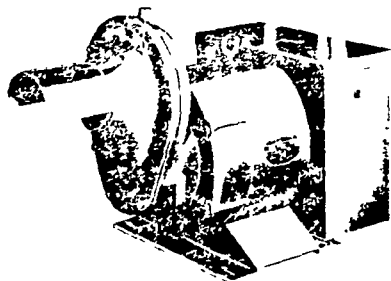


**WORLD'S LARGEST MFG. OF TRACTOR-DRIVEN ALTERNATORS**



**TRACTOR DRIVEN ALTERNATORS**

PTO Units Available From 7 KW to 60 KW 20 Year Warranty



**POWER WHEN YOU NEED IT MOST**

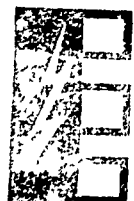
1800 RPM

INSURE YOUR FARM OPERATIONS AGAINST POWER OUTAGES HAVE EXPERIENCED PEOPLE INSTALL & SERVICE

INSIST on a FREE WINPOWER DEMONSTRATION at YOUR Farm Before You Buy ANY Tractor Driven Alternator

**L. J. Edwards**  
Farm Sales Manager

CALL NOW



**ELECTROMECC**  
Electromechanical Service

Route 222, Ephrata, Pa. 17522  
Phone (717) 733-7911

LP NATURAL GAS GASOLINE DIESEL ENGINE GEN. SETS TO 200,000 WATTS

Electric Motor • Generator • Power Tool Specialists

## For Full Market Reports Read Lancaster Farming



Put your money where their mouth is...

feed energy rich

**Mol-Mix**

Liquid Supplements

MOL-MIX—a molasses-base liquid feed supplement—contains a scientifically balanced formula providing energy, protein, vitamins, and trace minerals for maximum feed efficiency and low cost gains.

MOL-MIX being in liquid form, means less labor. In feeding, wastage is cut—yet cattle can be self-fed without fear of over-eating.

Get all the facts... call us today.

**JOHN Z. MARTIN**

New Holland R-1

Phone 717-354-5848

MOL-MIX Supplements are products of NATIONAL MOLASSES COMPANY