

**● Have You Heard**  
(Continued from Page 21)

like soap, paper towels, light bulbs, tooth paste, cigarettes which are not food but show up a about one fifth of the cash register tape.

And we also pay for such shopping services as parking lots, check cashing, plenty of clerks, longer shopping hours, shelf space for everything from hardware to cosmetics — 8,000 items where there were only 1,000 two decades ago.

Yes, our grocery bills are big get today than yesterday, but food takes a smaller share of our average income.

Only two decades ago 25 cents of the consumer's take home dollar went for food. In the late 1950's it was 21 cents. Today it's down to 17 cents. Maybe we should stop complaining.

**Let Elected to Sperry Rand**

J. Paul Lvet, president of the New Holland Group of Sperry Rand Corp. has been elected an executive vice president and director of the parent company. It was announced Monday by J. Frank Foister, Sperry Rand president.

As executive vice president Lvet will continue to serve as president of New Holland. His election as director of the Sperry Rand Board fills the vacancy left by the death of Rupert C. Thompson last June. Lvet has been a vice president of the corporation since April of this year.

Prior to becoming president of the New Holland Group Lvet served as vice president and general manager of all United States and Canadian operations for New Holland's farm equipment activities.

**Geigy Herbicide Cleared**

The U.S. Department of Agriculture has accepted an expanded label for Princep 80W which permits use of the Geigy herbicide for weed control in alfalfa and chardgrass mixtures and on pure alfalfa stands less than one year old. This applies in the Northeast United States only.

In addition, the product has been cleared for aerial application on alfalfa throughout the entire United States.

Previously, Princep had been approved only for use on pure stands of alfalfa established longer than one year.

Geigy recommends the product be applied in the fall to control such weeds as herbicide, wild mustard, lambsquarters, chickweed, German moss, alysium, downy brome, wild oats, tan-mustard, pigweed, speedwell, and peppergrass.

**Try A Classified Ad — It Pays!**

**EVERY TUESDAY, CATTLE SALES**

featuring large selections of cattle & calves direct from producers

**Staunton Livestock Market, Inc.**

C.O.F.

**All-American Chairman Dies**  
The general chairman of the Pennsylvania All American Dairy Show died Tuesday at the age of 81.

Cuthbert Nath Sr. of Don Lassville Rd., northwest of Pottstown, died at the Pottstown Medical Center, where he had been a patient for two weeks.

**Try A Classified Ad**



It Pays!

**Special Feeder Cattle Sales**

**Galax Livestock Market, Inc.**  
**Galax, Virginia**

**Hereford Calves Thurs., Oct. 15, 7:30 P.M.**  
**Yearling Steers Friday, Oct. 23, 1:00 P.M.**  
**Yearling Steers Thurs., Oct. 29, 7:30 P.M.**

James Williams, Sale Manager Phone (703) 236-2971

**PUBLIC DAIRY**



**COW SALE**

**THURSDAY NIGHT, OCT. 15**

starting 8:00 p.m. sharp

SALE LOCATED 5 MILES NORTH OF RT. 222  
ALONG 897, 2 MILES NORTH OF REINHOLDS.

**60 HEAD OF CATTLE**

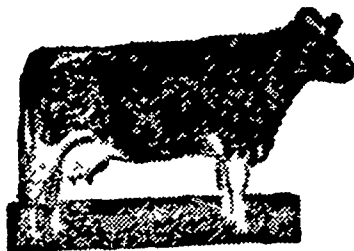
This consists of an entire Berks Co. herd in all stages of lactation — Pregnancy examined. Will also have some top upstate cattle, some fresh and some close, mostly grades, plus some upstate feeder cattle.

If in need of cows or feeders, don't miss this Sale.  
**HEALTH CHART NIGHT OF SALE**

**Randal Kline - Auctioneer**

**Vernon and Ray Kline - Owners**  
PHONE Area Code 215 267-2368 or 267-2298  
Not Responsible For Accidents  
Refreshment Stand

(50 head)



**Regular Monthly Dairy Cow SALE**

(50 head)

at

**Black & White Holstein Farm, Lancaster, Penna.**  
On U.S. 230 across from Comet Drive In Theatre and 1/4 mile west of Atlantic Breeders Coop.

on

**Friday Night, Oct. 16th at 7:30 o'clock Sharp**

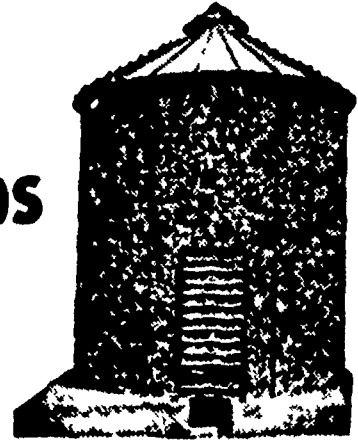
For this sale, we will have the finest set of cows, since our Anniversary Sale. Consisting of 25 Registered Canadian Holsteins. All hand picked with lots of size, type and good udders, many of them Classified with good production records. 25 Choice Wisconsin Holsteins, big top quality animals with production 60 to 80 lbs. All cattle just fresh or close up springers.

See this fine set of Cows before you buy

Credit terms available

Abel Dillenbach, Auct Henry Kettinger, Pedigrees  
**CHARLES C. MYERS, Owner**

**Speedy Corn Crib**



**Speedy Bar-Lok Construction**  
gives you greater Value . . . Longer Life.

1200 Bu. Size Now Available

**Landis Bros., Inc.**

1305 Manheim Pike, Lancaster

Ph: 393-3906

**Public Auction**

**New & Used Farm & Industrial Equipment**

**FRIDAY, OCTOBER 16, 1970**  
10 A. M.

Located — 4 miles north of York, Pa. on Route 181 or 20 miles south of Harrisburg from Interstate 83 — Exits 10 or 11.

**40 TRACTORS**

Ford, John Deere, International, Allis Chalmers, Massey Ferguson, Oliver, several crawlers & trucks.

**EQUIPMENT**

Plows, disk harrows, post hole diggers, mowers, elevators, wagons, combines, cornpickers, flail choppers, spreaders, & all kinds of farm & industrial equipment.

Farmers & Dealers:

We sell anything on commission — Bring your surplus equipment in for this sale.

Terms: Cash or good check

**York County Farm & Industrial Equipment Co. Inc.**

Box 222, Emigsville, Pa.

Phone: 717-764-6412 or 764-5115

COMPLETE AUCTION SERVICE

**BLACKTOP PAVING**

- ROADS
- DRIVEWAYS
- PARKING LOTS
- RECREATION AREAS

**Time To Think About . . .**  
Completely equipped to Handle any Project in the Lebanon, Lancaster or Berks County Area.

**FREE ESTIMATES**

**A. G. KURTZ & SONS, INC.**  
**PAVING DIVISION**

MAIN OFFICE: DENVER, PA.

Call: 267-7591