

William Hughes Has Top Steer At New Holland

William Hughes had the grand champion steer at the 4-H Baby Beef Show at the New Holland Fair Thursday.

Reserve honors went to Richard Groff Leola. Both animals were Herefords.

Hughes is the son of Mr. and Mrs. Robert Hughes, East Earl RD1. Young Hughes finished last in his class in the show last year. It was reported.

But the top spot this year brought him 76 cents a pound for his 915 pound animal when it was auctioned at the 4 p.m. sale at New Holland Sales Stables. L. Robert Frame of Whitford Sales Co., Exton, bought the animal.

H. D. Matz of New Holland bought the reserve animal for 50 cents a pound.

Including the champions, the

16 animals in the show weighed 14,825 pounds and sold for a total of \$6,743, an average of 46 cents a pound. Even without the two champions, the average was an outstanding 43 cents per pound.

The top Angus in the show was a 995 pound steer owned by Brenda Yoder, Elverson RD2. Lucinda Yoder who had the reserve Angus.

Brenda also was named top fitter of the show, while Linford Martin, East Earl RD1, was the top showman.

The top Angus was sold for 44 cents per pound, purchased by Iia Nissley, Morgantown. Angus reserve went for 40 cents per pound, purchased by Gale Sensenig, East Earl RD1.

Other purchasers besides those of the top four animals were Leola National Bank, New Holland Supply Co., Charles B. Hoober, Intercourse, Victor Weaver Inc., New Holland, New Holland Sales Co., New Holland Farmer's National Bank, Earl Sauder Feeds, New Holland, New Holland Meat Market and Lapp's Meat Market, Kinzer RD1.



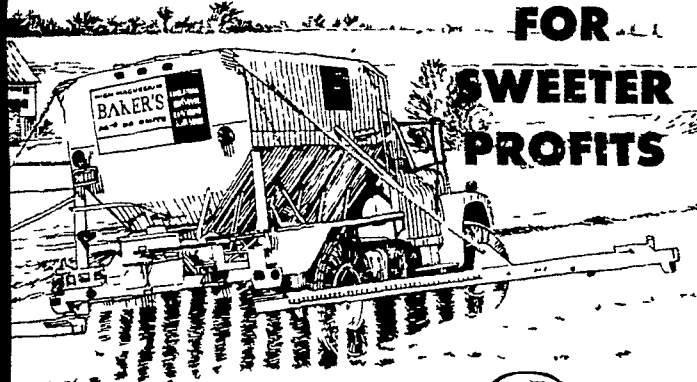
The grand champion steer, a 915-pound Hereford, at the New Holland Fair was displayed by William Hughes (right), East Earl RD1. Others present, left to right, are: Robert Hughes, William's father;

Robert Martin, New Holland RD1, 4-H leader, and L. Robert Frame, of Whitford Sales Co., Exton, buyer of the winning animal.

INSTANT READER RESPONSE



SWEETEN YOUR SOIL FOR SWEETER PROFITS



"HOW SWEET IT IS!"

Call BAKER or BURKHOLDER
for delivery of quality aglime

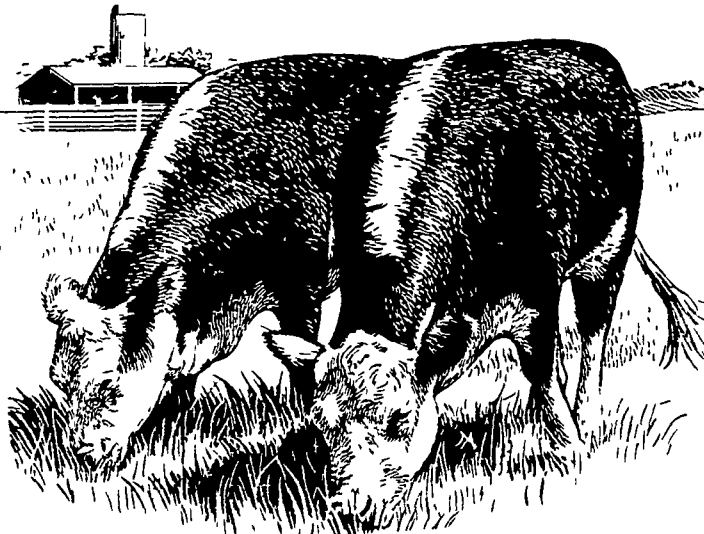
David M. Burkholder, Inc., Ephrata, and The J. E. Baker Company of York have embarked upon a joint aglime program to serve you better. We feel that this move will enable us to supply you with the highest quality agricultural limestone when and where you want it.

Remember, now is the time to sweeten your soil for a more productive growing season. It has been estimated that liming can return from \$3 to \$10 in bigger and better crops for every dollar invested.

Take the first step to higher profits now. Call 354-4202 in Ephrata for quality aglime.

The J. E. Baker Company

Get your steers uniformly on feed with RED ROSE BEEF STARTER PELLETS



When cattle arrive on your feedlot . . . feed them right from the beginning with Red Rose Beef Starter Pellets for three weeks — to get them uniformly on feed. Then follow the Red Rose Programmed Beef way of raising steers.

RED ROSE BEEF STARTER PELLETS is a roughage blended with vegetable proteins, non-protein nitrogen, molasses, minerals, vitamins, and a "low appetite stimulating level" of chlortetracycline. The high vitamin A level in these pellets will guard against infections during colder weather. Beef Starter Pellets is only one of a number of Red Rose Programmed Beef Feeds — all designed to help you raise steers better.

Why don't you aim to make more money from your steers this season by feeding the Red Rose Programmed Beef way? Call us . . . and we'll explain how you can do it!

Walter Binkley & Son
Lititz

Brown & Rea, Inc.
Atglen

Elverson Supply Co.
Elverson

L. T. Geib Estate
Manheim

I. B. Graybill & Son
St Strasburg

E. Musser Heisey & Son
R D #2, Mt Joy, Pa.

Heistand Bros.
Elizabethtown

Red Rose Farm Service, Inc.
N Church St., Quarryville

David B. Hurst
Bowmansville

G. R. Mitchell, Inc.
Refton, Pa.

Mountville Feed Service
Mountville

Musser Farms, Inc.
Columbia

Musser's Mill
The Buck

Chas. E. Sauder & Sons
Tette Hill

Ammon E. Shelly
Lititz

E. P. Spotts, Inc.
Honey Brook

H. M. Stauffer & Sons, Inc.