

Harter Named to Penn State Staff in Southeastern Pa.

Donald A. Harter has been named to the Pennsylvania State University Cooperative Extension Service staff as area resource development agent in five southeastern Pennsylvania counties.

Thomas H. Patton, Extension Service director, who announced the appointment, said Harter

will work with county agricultural agents and Extension home economists in developing and conducting resource development programs. He will serve in the counties of Berks, Chester, Dauphin, Lancaster, and Lebanon.

The new area agent's headquarters are in the Lebanon County Cooperative Extension

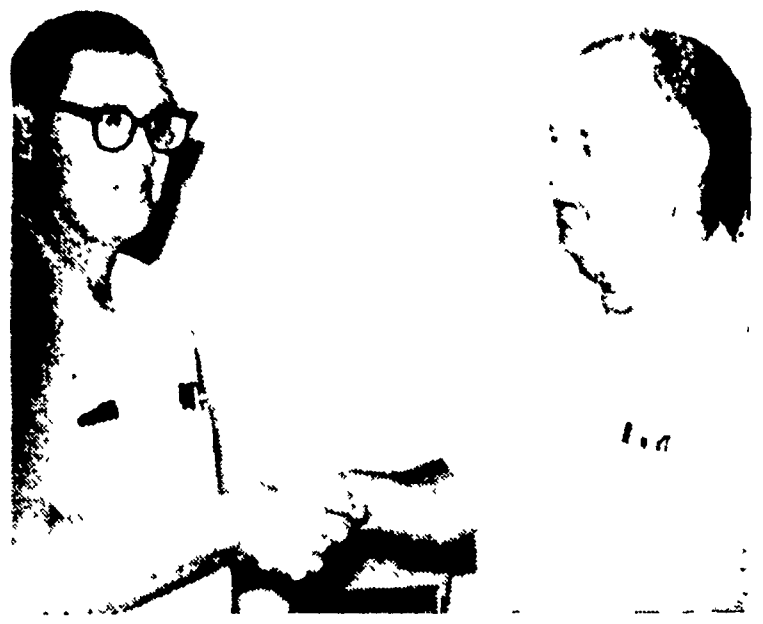
Service Office, 400 S Eighth St., Lebanon

A native of Slatington, Harter earned his bachelor of science degree from Penn State, majoring in agricultural education. He received his master of education degree from the University of Massachusetts and doctor of philosophy degree from the University of Wisconsin. His graduate work centered in the areas of adult education and Extension administration.

Prior to being named to the Penn State staff he was employed by the State University of New York in Albany, N.Y. He also served two years as an officer in the U.S. Air Force.

Harter is a member of Alpha Kappa Lambda, social fraternity, and Alpha Tau Alpha, scholastic honorary fraternity in agricultural education.

He is married to the former Doris H. Schmidt of Ridgewood, N.J. They are the parents of one daughter.



Orval Bass, Lancaster County district conservationist (right), welcomes Frank Lucas, new soil conservationist, who will be assisting Bass.

Lucas, 31, who recently moved to Rothsville, had been stationed in Meadville. He also worked for a time in New Mexico.

He received his BS degree in agronomy in 1962 from Oklahoma State University, Stillwater, Okla. He is married with one daughter.

Hardin, Ertl Give Joint Statement

The following joint statement was issued recently by U.S. Secretary of Agriculture Clifford M. Hardin and Minister of Food, Agriculture and Forestry Josef Ertl of the Federal Republic of Germany:

liberal trade policies are in the best interest of all countries in the long run. Both also considered it desirable that exchanges of information at the expert level should be held regularly in the future.

Among the highlights of the visit to the United States of Minister Ertl were two half-days of highly useful discussions with Secretary Hardin.

Both officials expressed their pleasure at the opportunity this afforded for a fruitful exchange of views on subjects of common interests to the two countries.

(Editor's Note: During his visit to the U.S., West German Agriculture Minister Ertl spent a full day in Lancaster County on September 9 discussing various aspects of agriculture in depth with leading local farmers.)

The discussions between Minister Ertl and Secretary Hardin ranged over a wide field, including subjects related to agriculture's development, economic growth and the adjustment problems that accompany rapid change in farm technology. The subject given the most emphasis, however, concerned the problems associated with trade between the United States and the European Community, and especially the Federal Republic of Germany.

Minister Ertl, on his part, expressed his concern about certain protectionist tendencies in the United States, noting particularly the protectionist aspect of trade legislation now pending in Congress. He expressed fear that this development might give rise to a similar reaction in Europe.

Secretary Hardin, for his part, indicated that a major concern of the United States Government was the high level of agricultural prices in the European Community and made clear the U.S. position that a reduction in grain prices was necessary.

Both officials agreed that



Some members of the Pennsylvania Egg Marketing Association admire a paste-up from egg cartons. This particular one is a horse and buggy, but officials say the artistic possibilities, using the egg carton as a base, are unlimited. Promotion of such egg art is considered by the egg men as having excellent potential for promoting eggs. Left to right are: Leonard J. Janofsky, Eastern

division manager of Olson Bros. of Pa. Inc., Philadelphia, Sam Berenson, general manager and vice president of Chick Sales Egg Farms, Hanover; Earl Hess, president of Hess Bros. Farms Inc., Ephrata, and Frank Troester, vice president and general manager of SommerMaid Creamery, Doylestown. Troester is president of the Egg Marketing Association.

Marketers Explore Brand Eggs

The Pennsylvania Egg Marketing Association has taken the first step toward a brand egg program.

At a meeting of the Association late last week near Lancaster, President Frank Troester said he hopes to get several committees organized within the next week or two to explore various aspects of a brand egg program.

As explained at the meeting, a brand egg program would involve cooperation of many egg producers to market their eggs

under a common brand name. Among other things, such a program would enable large scale promotion of the brand name, create a demand by consumers for the brand name eggs and hopefully enable the producers to capitalize on the brand name by obtaining a premium price for the eggs. In large part, the effort would be geared to insuring a top quality product and obtaining a top price for this product, it was indicated.

The Association has been making a preliminary study of the brand program for several months. Earl Hess, president of Hess Bros. Farms Inc. of Ephrata, reported on progress of the program so far.

Tom Smith of Cloisterdale Farms, Ephrata, said the brand program "ought to receive the top priority" of the egg marketers. He said the program is "the most important thing" the organization can do.

In his discussion, Hess outlined six committees that have been proposed to help implement the brand egg program. The committees stem from previous discussions and meetings.

Marek's Vaccine
In other discussion, Homer Bicksler, executive director of the Pennsylvania Poultry Federation, reported that "sizable

quantities" of Marek's vaccine should be available in Pennsylvania by January.

A firm to produce the vaccine for sale within Pennsylvania is now being set up in the State College area. The vaccine produced by the firm will be for sale only within Pennsylvania.

Similar intra-state firms reportedly already are producing the vaccine in other states.

Interstate production awaits approval by the USDA.

Undercutting Illegal
Sam Berenson, general manager and vice president of Chick Sales Egg Farms, Hanover, called the attention of the organization to state law, PL900 adopted in August 1941, declaring illegal the sale of items at lower than the cost.

The law applies to both whole

salers and retailers. It defines cost and outlines penalties. It also explains that selling items at lower than the cost represents unfair competition and results in economic disruptions and ultimately increases costs for the consumer.

Berenson explained that the egg industry should be concerned about such practices because "we don't have too much room to go back" in price. He also said the producer is the first to get hurt in such unfair price cutting situations.

He said a similar law exists in Maryland and Virginia and said producers ought to use it to stop egg price undercutting in Pennsylvania.

Omelet King Results
In a report on the Omelet King (Continued on Page 18)

At Lampeter Fair Swine Contest Set

Get your entries in now for the swine contest at the Lampeter Fair, urges John Henkel.

Up to \$45 in premium money will be available to the farmer with the best hog. The total prize money will be \$130.

Entries will be judged both live on foot and carcass on the rail.


Entries are to be in place by noon Thursday (Sept. 24) at the Lampeter Fair grounds and on

foot judging will begin at 3 p.m. Thursday.

Entry fee is \$1 per hog, payable with entry, to John H. Henkel, Willow Glen Farm, Strasburg RD1. Entry deadline is Monday (Sept. 21).

Entries are limited to 25 hogs and one entry per farm on a first come first served basis.

Premium money will run as follows: On foot judging, \$20 first prize, then \$15, 10, 5 and 5; on rail judging, \$25 first prize, then \$20, 15, 10 and 5.



Lancaster Farming

SECOND SECTION