

Christmas Trees Lose Some Glitter

In the 1950s there were an estimated 2,000 Christmas tree growers in Pennsylvania. Today there are approximately 600. What happened?

The number of Christmas tree growers melted like snowballs after World War II, raising Christmas trees became the pop-

ular thing to do for a variety of non-agricultural people — physicians, dentists, architects and businessmen of all sorts.

Here was a real bonanza, a mother lode, an untapped source of wealth. Here was an item that could be bought for two cents and planted on low priced land. You could sit back, do nothing, watch it grow and collect \$3 for it a few years later. Or so it seemed.

The tyos eventually learned that few Christmas trees can make it on their own into a family's living room. They need shearing and care before they can become a fine-looking, perfect tree. The shearing and care require labor and equipment and involve much expense.

Something else was happening. The U.S. was becoming increasingly affluent and demanding. Mrs. Housewife wanted the perfect Christmas tree.

Because of her demands for perfection, hundreds of thousands of Christmas trees which just plain grew and received no attention never were cut and never reached the stage where they would support glittering tinsel and colored balls.

Exit many would-be Christmas tree growers.

Professional Christmas tree growers are so aware of the necessity of marketing quality trees that they seldom cut more than 50 to 60 per cent of their crop for the holiday season. The less-than-perfect specimens are destroyed.

Need it be said that the destroyed trees receive the same care, involving the same expense, that the perfect trees receive?

Artificial trees haven't been exactly a godsend to Pennsylvania's Christmas tree growers.

Every time an artificial tree is purchased it means a sales

loss of four to five natural trees in a warm department store because a housewife will usually keep her artificial tree for four to five years.

Artificial trees which have become increasingly attractive, have certain advantages. They can be kept for more than one year and constitute no disposal problem.

They have tremendous sales advantages. They are usually displayed in a beautiful setting

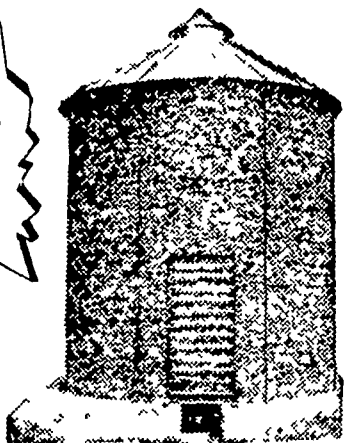
in a warm department store. Lighting effects add to their attraction.

But natural Christmas trees remain the favorite. Millions of Pennsylvania-grown trees will go to market this fall. Indiana County, the Christmas tree capital of the world, will send more than three million trees to markets deep in the south and as far west as Texas.

Still your best crib buy
See Us Today

Over 1200 bu. capacity

EXCLUSIVE SPEEDY
ROOF RAFTERS MAKE
SPEEDY CORN CRIBS



Twice as Fast

Twice as easy to erect

Speedy roof rafters guarantee easy, proper placement of roof panels the first time. Rafters add great strength to the roof. Panels need only to be bolted together in three places. It's another big time-saving feature you get only in Speedy Bar-Lok corn cribs.

Stands up best—lasts longer. Wire mesh panels are 5-gauge wire—thick as a 3/4" bolt! No

bulge or sag. Sturdy 26-gauge galvanized roof is securely anchored to 9 steel roof rafters and side panels. Can't blow off!

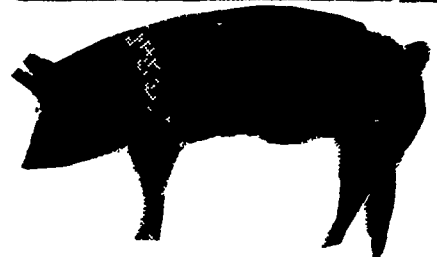
Come in today and see the Speedy Bar-Lok corn crib. Let us prove to you that Speedy is twice as fast—twice as easy to erect. Let us show you all the other features that make Speedy Bar-Lok your best corn crib buy.

GRUMELLI FARM SERVICE

Quarryville

Ph: 786-3630

Which way do you want to have a regular monthly income?



With the Pioneer system, hogs can provide you with an income of \$600 per month. Interested? See us.

Pioneer Gets The Job Done. Why Not Give Us A Try?

CALL YOUR PIONEER MAN:



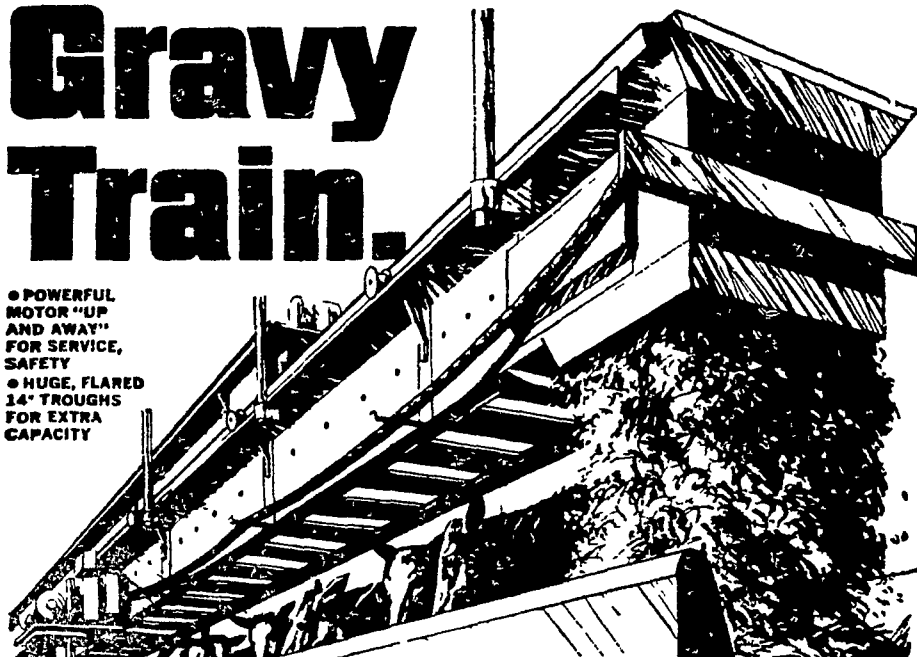
ELMER M. SHREINER

Trading as Good's Feed Mill
Specializing in DAIRY & HOG FEEDS

New Providence, Pa.
Phone 786-2500

Gravy Train.

POWERFUL MOTOR "UP AND AWAY" FOR SERVICE, SAFETY
HUGE, FLARED 14" TROUGHS FOR EXTRA CAPACITY



Strength, Performance, Dependability. You've got 'em all with VAN DALE'S NEW TRAVELING BUNK FEEDER.

Van Dale's SCF-1400 is the traveling feeder to put you on the track to faster, more profitable operations. Automatically, it delivers up to 40 tons of silage per hour to bunks on a single chain, continuous "shuttle" service.

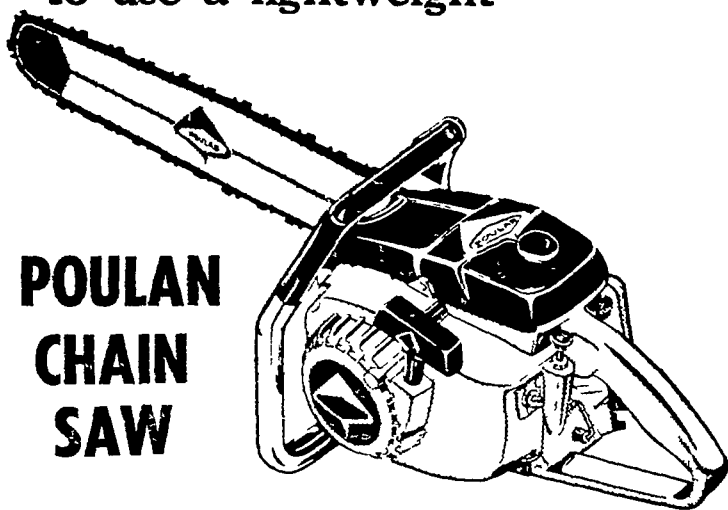
Feeder trough chain is No. 67 pin-tle (12,500 lb. strength) and drive chain is C-550 steel (average top strength of 10,000 lbs.). Interlocking, snap-together galvanized metal components reduce erection time as much as 50%. Suspended or floor-mounted, rails are mounted with Van Dale's exclusive clip-on brackets to provide extra-rigid support. Unit adapts to any feeding need in-barn or out-of-doors.

CALEB M. WENGER

R. D. 1
Drumore Center
Quarryville, Pa.
Phone 548-2116

VAN DALE

If you're big enough to use a chain saw you're strong enough to use a lightweight



POULAN CHAIN SAW

- Poulan lightweight engine weights range from 12½ lbs. to 13¾ lbs.
- Displacement ranges from 3.6 Cu. In. to 4.5 Cu. In.

These may be lightweight chain saws but there's nothing light weight about Poulan performance. See 'em in action today. We'll be glad to give you a demonstration.

Poulan Chain Saw **\$139.95**
prices start at a low

ELI F. KING

POND ROAD, RONKS R.D. 1

(2 miles northwest of Intercourse) Phone: 768-3670