

**SPERRY RAND**  
**JOIN THE  
 NEW HOLLAND  
 MANUFACTURING TEAM**

FULL TIME jobs are available in Manufacturing at our plants in New Holland and Mountville. These jobs are on the night shift in our Assembly Departments. **NO EXPERIENCE** is necessary. We will train you on the job. Successful applicants will be eligible for excellent company-paid benefits including:

- HOSPITALIZATION
- SICK PAY
- VACATIONS
- HOLIDAYS
- RETIREMENT PAY

If you are interested in joining a team that has built a reputation for building outstanding farm equipment, and has enjoyed a record of steady, rewarding employment, contact J. Harold Wright at 354-1849 or Harold R. Schreiber at 354-1851.

You may apply at our Plant Personnel office in New Holland located on Diller Avenue, Monday through Friday from 8:00 a.m. until 5:00 p.m. or call us for an appointment and we will meet you at our Mountville plant if you prefer. Night interviews available.

**NEW HOLLAND**  
 DIVISION OF SPERRY RAND  
 New Holland, Pennsylvania 17557  
 An Equal Opportunity Employer

**Mail Box Market**

For Sale — Purebred Yorkshire boars, bred gilts and open gilts. Carcass championship bloodlines Willow Glen Farm, R.D. 1, Strasburg, Pa. Ph. AC 717-788-2562.

For Sale—Shropshire rams — lambs, yearlings and older Shrops give more lambs, more meat, more wool Wain Menhennett, Bryson Rd, Cochranville, Pa 215 593-5726.

For Sale—Two new 12 hole pig feeders Stewart cow clips. Tobacco lath Phone 653-5966

For Sale—Wire mesh corn crib holds 40 ton; 1 wooden silo, 10 rollaway nests, tobacco laths Call 717-933-4333 between 5 & 8 p.m.

For Sale—5,000 tobacco lath \$1.00 per hundred. Harry M Reiff, 101 Glenbrook Road Leola, Pa.

For Sale — Used New Idea spreader, make best offer 1 used liquid pump 1000 gal. per minute. Call 626-4355

Found—Female Lab Dog, approximately 1 yr old. Evidence of a recent Operation Found in Manheim area Phone Humane League, 393-6551.

For Sale — Forage wagon side and rear unloading, good condition Phone 445-6816.

**Robert K. Rohrer**

**Bulldozing - Grading  
 Patz Sales & Service**

Barn Cleaners - Silo  
 Unloaders - Cattle Feeders

Quarryville, R. D. 1  
 Hensel 548-2559

**Mail Box Market**

Notice — Everett Newswanger, photographer We are now ready to serve you in business, farm, wedding and family pictures We also do brochures, catalogues, etc Phone 394-4219.

For Sale—Large International disc harrow, like new; seed wheat Blue Boy and Redcoat; old ea coin Phone 786 3740.

For Sale—Pony colt, Gray Roan, 2 years, 12 1 hands, good disposition Phone 626-7680

For Sale—1958 Pontiac, 4 dr. sedan, runs good, inspected. \$95 00 or best offer. Phone 464-4227

For Sale—1962 1/2 ton Dodge pick up truck, 58 000 miles, \$450, or best offer. Call 768-3670.

Wanted to Buy — Grapes for jelly and juice. Phone 932-3425.

**Feed and Seed**

200 bushels cleaned Balbo rye, \$2 50 each

OWEN MUMMAU  
 Mount Joy RD2  
 Phone 653-5409

For Sale — Balbo Rye for Seed C. Martin Greenleaf and Sons Oxford RD1, Pa.  
 529 2704 529-2723

**Breeding Service**

All beef and dairy farmers can purchase Carnation Farms Semen direct from Joseph P Trainor, Honey Brook, Pa 19344, or phone 215 273-3847 or 273-3317

**Try A Classified Ad  
 It Pays!**

**What's New?**

**Egg Market By Phone**

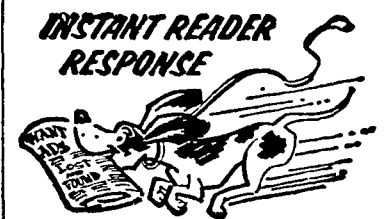
Daily egg market information is now available via an automatic telephone answering system from the Federal State Market News Service in Newark, N J. the USDA's Consumer and Marketing Service announced recently. The number to call is (area code 201) 645 3369.

The latest New York wholesale egg report, along with major sales of cartoned eggs moving through volume buyers, will be reported each noon, plus a brief description of market conditions.

Daily up-to-the-minute information from Chicago will also be available at 4 p.m. as will the latest statistical information on slaughter, egg inventory, movement of eggs into retail channels and other market information as it becomes available.

Weekly frozen and dried egg information will be reported on Friday only.

The newly installed automatic telephone answering system operates seven days a week, 24 hours a day.



**CALL Elmer Beiler**



COME IN! SEE THE NEW 1971 LAWN-BOY MOWERS TODAY.

**CLEARANCE SALE**

**MOWERS**

**At Extra Discount**

LAWN-BOY — HAHN ECLIPSE

**CALL Titus Burkholder**

- 1 used 300 gal. creamery package
  - 1 used 300 gal. Esco bulk milk tank M.C.D. 1 N.Y.
  - 3 used 12 can top opener milk coolers
  - 1 used 6 can top opener milk cooler
  - 1 used 2 h.p. Lehigh compressor
  - 2 used hold over cooling plates for egg cooler
  - Milk Keeper Bulk Tanks
  - 12 & 7 can Star Milk Coolers
  - Lehigh Refrigeration Compressors
  - Klenzade Automatic Bulk Tank Washers
- NOTICE — We have been appointed stocking warehouse for Milk Keeper Bulk Tanks.

**CALL Leroy Zook**

LANCASTER SILOS  
 ACORN BARN EQUIPMENT  
 WEAVERLINE CARTS

**CALL Chas. Eshleman**

September Special  
 Tractor Batteries

**20% off list price.**

Ortho Dairy and Horse Fly Spray

Reg. Price Special this Month only

**\$2.35 Gal.**

Just Arrived Aluminum Gates 10-12-14-16 Foot

**SPECIAL  
 POLYETHYLENE FILM  
 Covers 32 x 100 — 6 Mill**

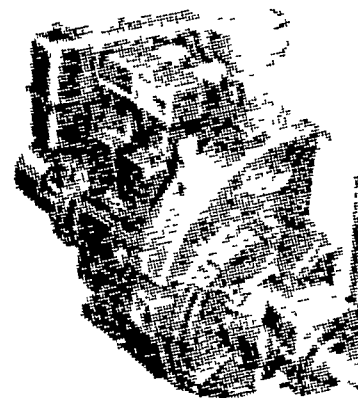
**35¢ foot**

**CALL Henry Esh**

For Sales — Service — Parts

- 10 H.P. Deutz — With Clutch
- New 7 1/2 H.P. Slow Speed
- Used 7 1/2 H.P. Air Cooled Slow Speed

Area Distributor for Lister Diesel Engines



**CALL Bob Kistler H.**

**NEW EQUIPMENT**

- 1 P.R. Single Row Corn Picker
- 234 — 2 Row Mounted Corn Picker
- McCurry Grain Bodies
- 826 & 1026 Diesel Tractors
- 544 Farmall Diesel Tractor
- 990 Mower Conditioners

**USED EQUIPMENT**

- F.H. 84 Gehl Single Row Forage Harvester A-1 Condition — Special At \$1275.
- 2 — M.H. 2 Row Corn Picker
- Farmall Tractor — Super M
- W6 — Tractor
- 300 Tractor with 3 Bottom Plow
- John Beam Sprayer
- Myers Sprayer
- F.H. 84 Gehl single row Forage Harvester

RADIO CONTROLLED TRUCKS FOR BETTER SERVICE

**C. B. HOOBER & SON**

Intercourse, Penna.

Phone 768-8231