

## DHIA MONTHLY REPORT

(Continued from Page 21)

| Owner - Name           | Breed | Age  | Days | Milk   | Test | Fat |
|------------------------|-------|------|------|--------|------|-----|
| LeRoy M. Oberholtzer   | GrH   | 7-2  | 305  | 17,311 | 3.8  | 632 |
| Alta                   | GrH   | 7-2  | 305  | 17,311 | 3.8  | 632 |
| Melvin L. Beiler       | RH    | 6-8  | 268  | 12,624 | 5.2  | 652 |
| Jean                   | RH    | 6-8  | 268  | 12,624 | 5.2  | 652 |
| Jason L. Weaver        | GrH   | 6-10 | 305  | 17,164 | 3.8  | 651 |
| Margie                 | GrH   | 6-10 | 305  | 17,164 | 3.8  | 651 |
| Lester M. Weaver       | RH    | 6-11 | 305  | 16,423 | 4.0  | 651 |
| 63A                    | RH    | 6-11 | 305  | 16,423 | 4.0  | 651 |
| 27C                    | RH    | 3-0  | 305  | 13,095 | 4.9  | 648 |
| Eli S. King            | GrH   | 4-9  | 296  | 16,898 | 3.8  | 649 |
| Rose                   | GrH   | 4-9  | 296  | 16,898 | 3.8  | 649 |
| John M. Smucker        | RH    | 8-11 | 270  | 12,535 | 5.2  | 649 |
| Pearl                  | RH    | 8-11 | 270  | 12,535 | 5.2  | 649 |
| A Dale Herr (Holstein) | GrH   | 4-6  | 305  | 17,890 | 3.6  | 647 |
| H 25                   | GrH   | 4-6  | 305  | 17,890 | 3.6  | 647 |
| Marvin K. Witmer       | RH    | 4-1  | 305  | 17,747 | 3.6  | 647 |
| Harriet                | RH    | 4-1  | 305  | 17,747 | 3.6  | 647 |
| James G. Kreider       | RH    | 2-8  | 305  | 16,382 | 3.9  | 647 |
| 134                    | RH    | 2-8  | 305  | 16,382 | 3.9  | 647 |

| Owner - Name            | Breed | Age  | Days | Milk   | Test | Fat |
|-------------------------|-------|------|------|--------|------|-----|
| Amos H. Rutt            | RH    | 3-6  | 305  | 14,784 | 4.4  | 646 |
| Bertie                  | RH    | 3-6  | 305  | 14,784 | 4.4  | 646 |
| Daniel J. Martin        | RH    | 6-11 | 305  | 15,643 | 4.1  | 643 |
| Violet                  | RH    | 6-11 | 305  | 15,643 | 4.1  | 643 |
| Nelson H. Hershey       | RH    | 6-6  | 305  | 13,996 | 4.6  | 643 |
| Reta                    | RH    | 6-6  | 305  | 13,996 | 4.6  | 643 |
| Marvin S. Nolt          | RH    | 5-5  | 305  | 17,597 | 3.6  | 642 |
| Dot                     | RH    | 5-5  | 305  | 17,597 | 3.6  | 642 |
| N. Gerhart & L. W. Nolt | GrH   | 7-2  | 305  | 16,019 | 4.0  | 642 |
| 8                       | GrH   | 7-2  | 305  | 16,019 | 4.0  | 642 |
| Jonas Sensenig          | RH    | 8-10 | 305  | 17,962 | 3.6  | 641 |
| 28                      | RH    | 8-10 | 305  | 17,962 | 3.6  | 641 |
| Christian Zook          | GrH   | 4-1  | 271  | 16,175 | 4.0  | 640 |
| Grace                   | GrH   | 4-1  | 271  | 16,175 | 4.0  | 640 |
| Donald L. Hershey       | RH    | 4-8  | 305  | 18,334 | 3.5  | 638 |
| Cheryl                  | RH    | 4-8  | 305  | 18,334 | 3.5  | 638 |
| Reid & Holloway         | GrH   | 7-3  | 302  | 14,615 | 4.4  | 638 |
| 80                      | GrH   | 7-3  | 302  | 14,615 | 4.4  | 638 |

(Continued on Page 23)

### Call Us Now

To reach the Lancaster County farm community at the least possible cost, advertise in Lancaster Farming. Call us at 394-3047 or 626-2191 from 8 a.m. to 5 p.m. Monday through Friday. The 626-2191 (ask for Lancaster Farming) number enables Manheim, Ephrata and Akron patrons to avoid a toll call.

## PEANUT HULLS

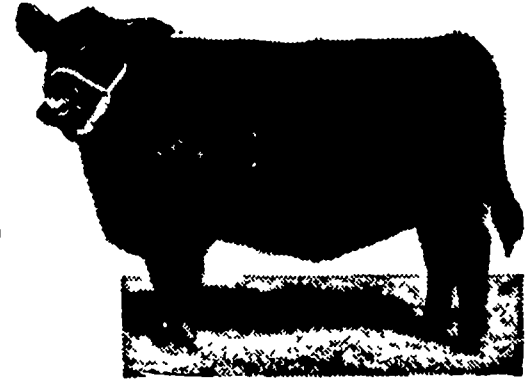
now taking orders to be delivered September thru December

**PLANT FOOD STORE**

INTERCOURSE, PA. 17534

PHONE (717) 768-8451

## Finance Your Feeder Cattle At



**FARMERS NATIONAL BANK**  
*Lititz*

LITITZ, PENNSYLVANIA

Lititz      Neffsville      Lancaster Shopping Center      Park City

SEE US FOR PROMPT — COURTEOUS SERVICE

MEMBER F.D.I.C.

## the FUTURE is HERE with REX

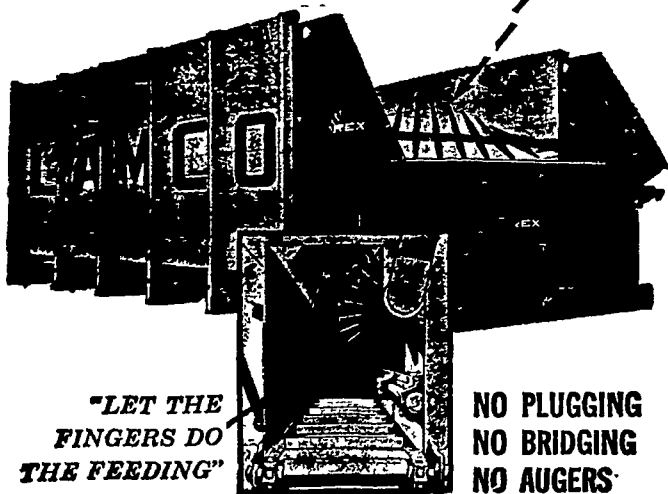
SELF-UNLOADING forage box BY **LANCO** LOCKE, N.Y.

THE BOX DESIGNED WITH THE 'A' FARMER IN MIND

**SIMPLE . . .** Worm Driven Main Apion  
Worm Driven Beaters  
**STRONG . . .** Built with Good New York Oak (Dimensional Lumber)

**SMOOTH . . .** NO RATCHET

**SAFE . . .** FINGER FORCED FEEDING ("PEELS" OFF THE LOAD)



"LET THE FINGERS DO THE FEEDING"

NO PLUGGING  
NO BRIDGING  
NO AUGERS

**NO AUGER - NO RATCHET**  
For Handling Of Heavy Loads Smooth, Easy, Trouble Free

Complete 14 foot box (16 foot overall) 2 beater . . . 54" high, 7 ft. wide inside  
Reverse and Swinging Tailgate for Bale Thrower \$95.00 extra  
Right or Left Hand unloader available

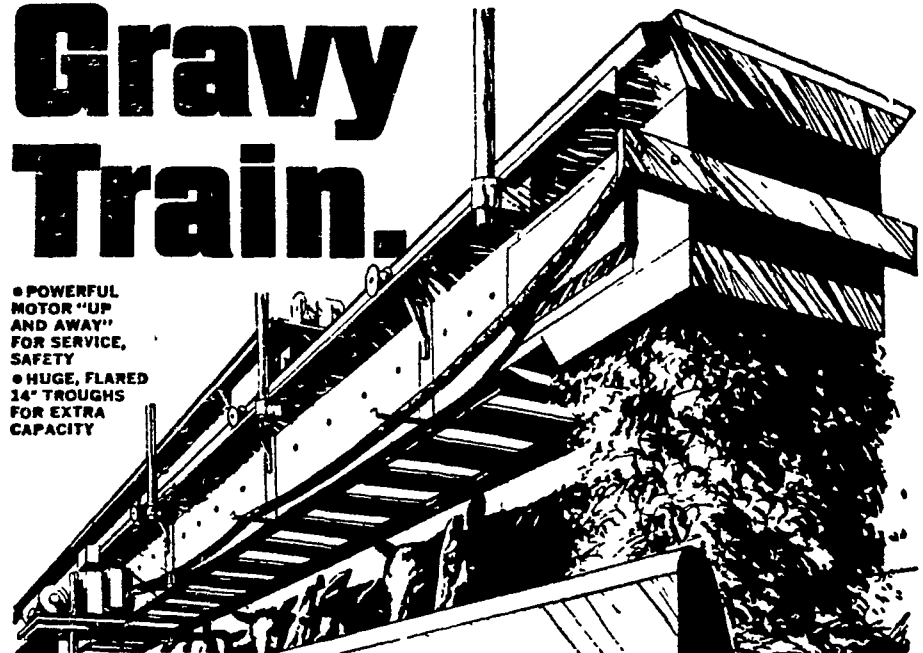
\$1095. F.O.B. Locke, N.Y.

**KINZER EQUIP. CO.**

Your Equipment Center in Lancaster County  
Box 23, Kinzer, Pa.      Phone 442-4186  
Phone 768-8916

## Gravy Train.

• POWERFUL MOTOR "UP AND AWAY" FOR SERVICE, SAFETY  
• HUGE, FLARED 14" TROUGHS FOR EXTRA CAPACITY



Strength, Performance, Dependability. You've got 'em all with VAN DALE'S NEW TRAVELING BUNK FEEDER.

Van Dale's SCF-1400 is the traveling feeder to put you on the track to faster, more profitable operations. Automatically, it delivers up to 40 tons of silage per hour to bunks on a single chain, continuous "shuttle" service.

Feeder trough chain is No. 67 pin-tie (12,500 lb. strength) and drive chain is C-550 steel (average top strength of 10,000 lbs.). Interlocking, snap-together galvanized metal components reduce erection time as much as 50%. Suspended or floor-mounted, rails are mounted with Van Dale's exclusive clip-on brackets to provide extra-rigid support. Unit adapts to any feeding need in-barn or out-of-doors.

**CALEB M. WENGER**

R. D. 1  
Drumore Center  
Quarryville, Pa.  
Phone 548-2116

**VAN DALE**