

DHIA MONTHLY REPORT

(Continued from Page 14)

Owner Name	Breed	Age	Days	Milk	Test	Fat
Kenneth A. Skiles						
Fudge	GrH	4-8	305	17,591	4.1	728
Edna	GrH	3-10	305	16,260	4.2	684
Harry S. Aungst						
Elsie	RH	6-9	226	15,589	4.7	728
Fobes	RH	6-8	305	15,213	4.5	684
Missy	RH	3-9	305	14,024	4.5	637
Jay C. Garber						
Eauty	RH	5-1	305	19,108	3.8	722
A X Gem	RH	9-1	300	14,836	4.8	710
Earta	RH	5-6	299	16,278	4.0	659
Ja Jean Dany Farm						
Clara	RH	9-11	305	21,052	3.4	717
Betty	RH	7-5	305	18,352	3.6	663
Lantz Brothers						
Marcy	RH	3-8	305	15,056	4.7	711
John A. Harsh						
Linda	GrH	3-1	305	16,089	4.4	708
Kris	GrH	3-11	305	15,417	4.6	708
Elmer H. Weber						
Queen	RH	7-0	305	18,435	3.8	706
Harold M. Shenk						
Perella	RH	8-6	305	17,374	4.1	704
Ivan S. Stoltzfus						
Ivy	RH	7-9	298	17,094	4.1	704
Paul R. Witmer						
Maid	RG	4-2	305	14,040	5.0	704
Samuel F. Sauder						
Cathy	RH	4-8	305	18,384	3.8	702
Ann	RH	5-8	296	18,170	3.5	631
Amos E. King Jr.						
16	RH	3-10	305	19,189	3.7	701
Clarence M. Murry						
Ida	RH	7-7	290	21,093	3.3	693

(Continued on Page 21)

Pa. Tart Cherry Crop Hit By Weather, Rot, Birds

Pennsylvania tart cherry growers, who earlier in the season expected a bumper crop, have had a serious setback. Production is now estimated at 2,000 tons, a drop of 4,000 tons from the July 1 forecast, and 18 per cent below last year, according to a survey by the State Crop Reporting Service.

Heavy rains and below normal temperatures caused splitting and brown rot in the important southcentral district where growers also complained of considerable bird damage. Erie County producers were more fortunate and their large crop accounted for a significant portion of the state's production.

Quality of the fruit was generally fair to poor.

Picking of early peach varieties began later than usual because cool, wet weather delayed maturity. Quality and size of early varieties were good.

Total state production is expected to be 84 million pounds, less than previously anticipated, and 30 per cent below last year.

Apple production in the Commonwealth this year will lag five per cent behind last year's bump-

ported at a minimum.

Erie County grape growers are looking forward to a 30,000 ton crop, an average year, but up 50 per cent from last year's disappointing crop. Grapes are large and well advanced.

Pear production is estimated at 3,200 tons, unchanged from last year.

ALL BEEF AND DAIRY FARMERS

Can Purchase

CARNATION FARMS SEMEN

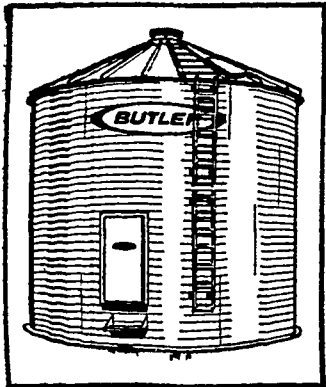
Direct From

JOSEPH P. TRAINOR

Honey Brook, Pa. 19344

Call 215 273-3847, 273-3817

They Look New; They Are New!



NEW BUTLER GRAIN BINS

The new Butler grain bin—with wider body sheets, a broader corrugation and fewer parts—provides real savings and faster, easier erection. Other high performance improvements include a steeper roof for more grain storage capacity; a new floor—a stronger, clear-punched floor which installs quickly; a new step-in door with corrugated frame, located above ground; and many more. See us today for details on the new Butler bin.

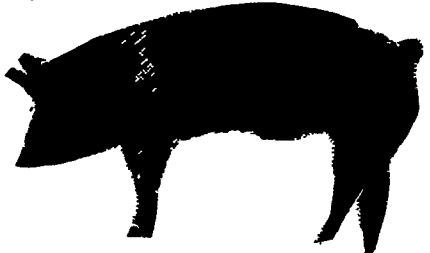
Farmill Construction & Repair



Gordonville, Pa. 17529

Phone 717-768-8796

Which way do you want to have a regular monthly income?



With the Pioneer system, hogs can provide you with an income of \$600 per month. Interested? See us.

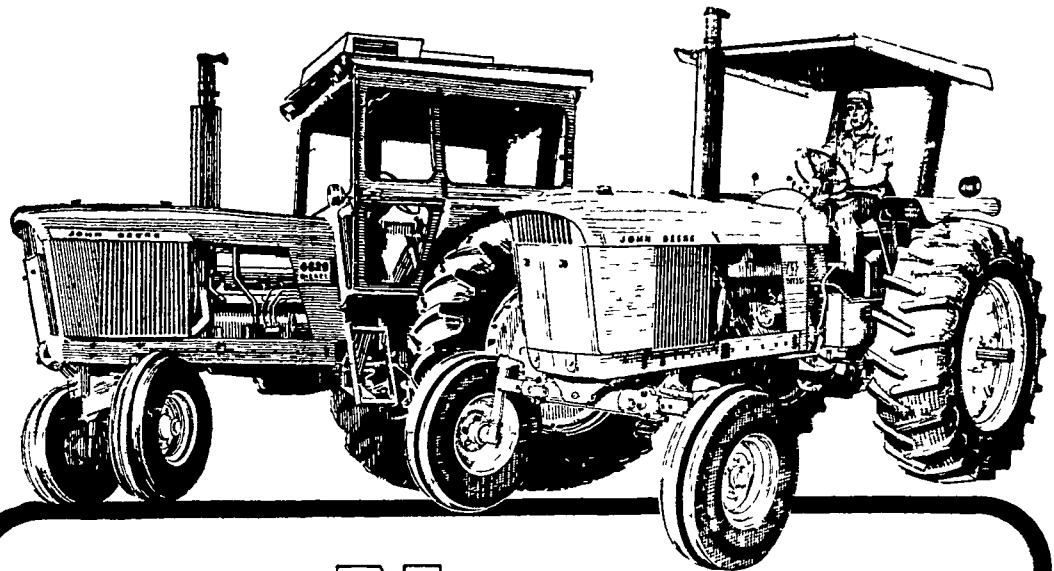
Pioneer Gets The Job Done Why Not Give Us A Try? CALL YOUR PIONEER MAN:



ELMER M. SHREINER

Trading as Good's Feed Mill
Specializing in DAIRY & HOG FEEDS
New Providence, Pa.

Phone 786-2500



New John Deere 115-hp 4320 and 135-hp 4620

Power is up... price-per-hp is down

Any way you consider these new tractors, you come out money ahead.

From a performance standpoint, both tractors feature a Turbo-Built Diesel engine that delivers an extra margin of power—A Dynamic Power Reserve that increases work output per hour and expands acreage-handling ability.

From a list price standpoint, both tractors are well below the \$100-per-hp rule of thumb. Included in the base price are a 3-point hitch,

Independent PTO, double-acton cylinder outlet, and adjustable drawbar. Both the 4320 and 4620 deliver a lot of extras at no extra cost to you. Stop in for complete price information and arrange a field test.



Shotzberger's Elm 665-2141 West Chester
M. S. Yearsley & Sons 696-2990 Lancaster
Landis Bros. Inc. 393-3906
A. B. C. Groff, Inc. New Holland 354-4191
Wenger Implement, Inc. The Buck 284-4141